

The contractor is responsible for checking dimensions, tolerances and references. Any discrepancy to be verified with the Architect before proceeding with the works. Where an item is covered by drawings to different scales the larger scale drawing is to be worked to.

Do not scale drawing. Figured dimensions to be worked to in all cases.

Where products have been specified, PRP have reviewed applicable products available in the UK at the time of writing the specification. For the avoidance of doubt, product manufacturers and suppliers must confirm that each product is fit for its intended use and provide such evidence as may reasonably be requested to confirm performance, including, but not limited to, product test classification and interfaces with adjacent products.

Where the contractor wishes to propose alternative products, representative samples and a full technical appraisal should be submitted by the contractor to the employer demonstrating that their proposed alternative has equal or better performance.

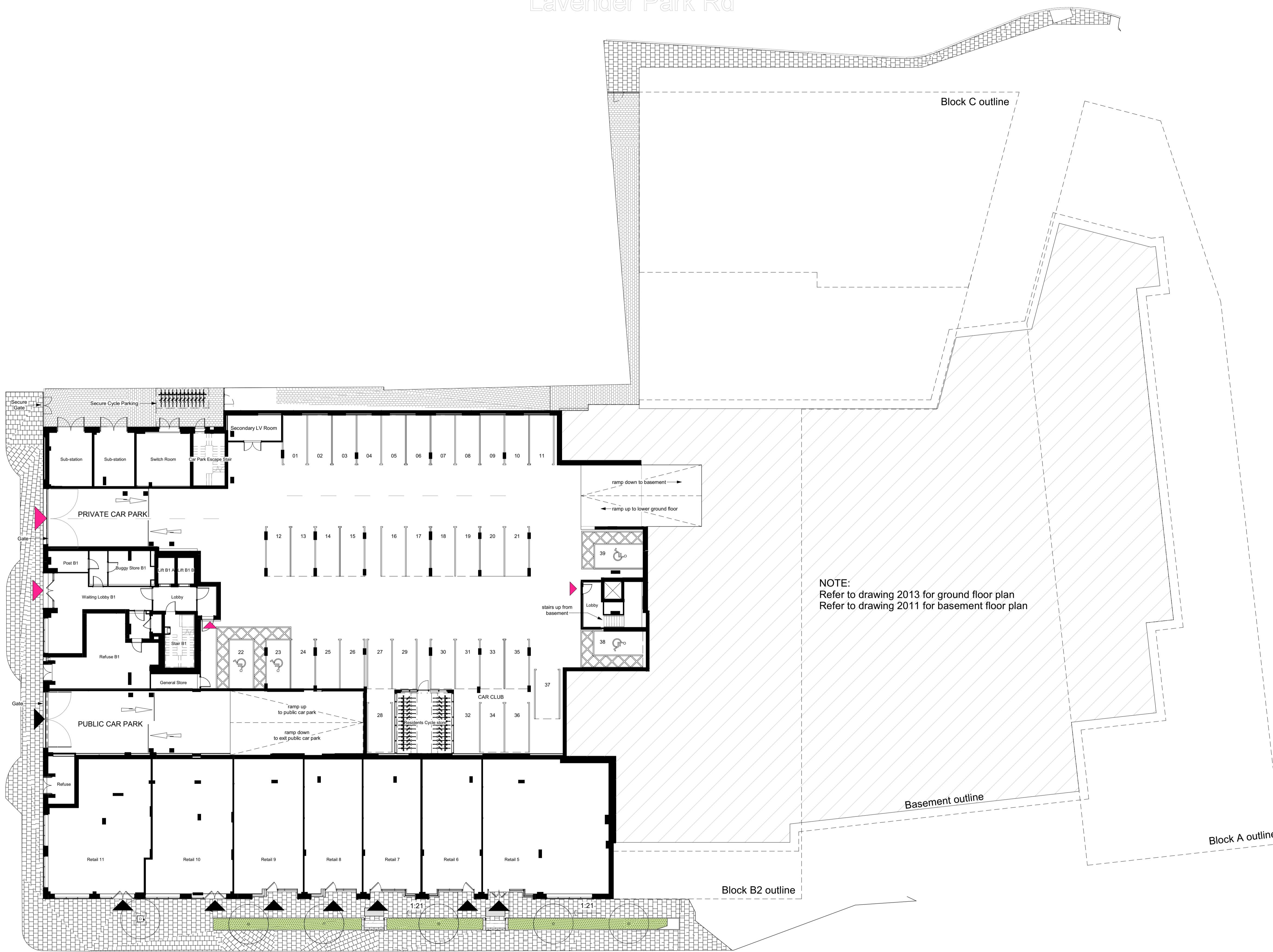
CDM REGULATIONS 2015. All current drawings and specifications for the project must be read in conjunction with the Designer's Hazard and Environment Assessment Record

All intellectual property rights reserved.

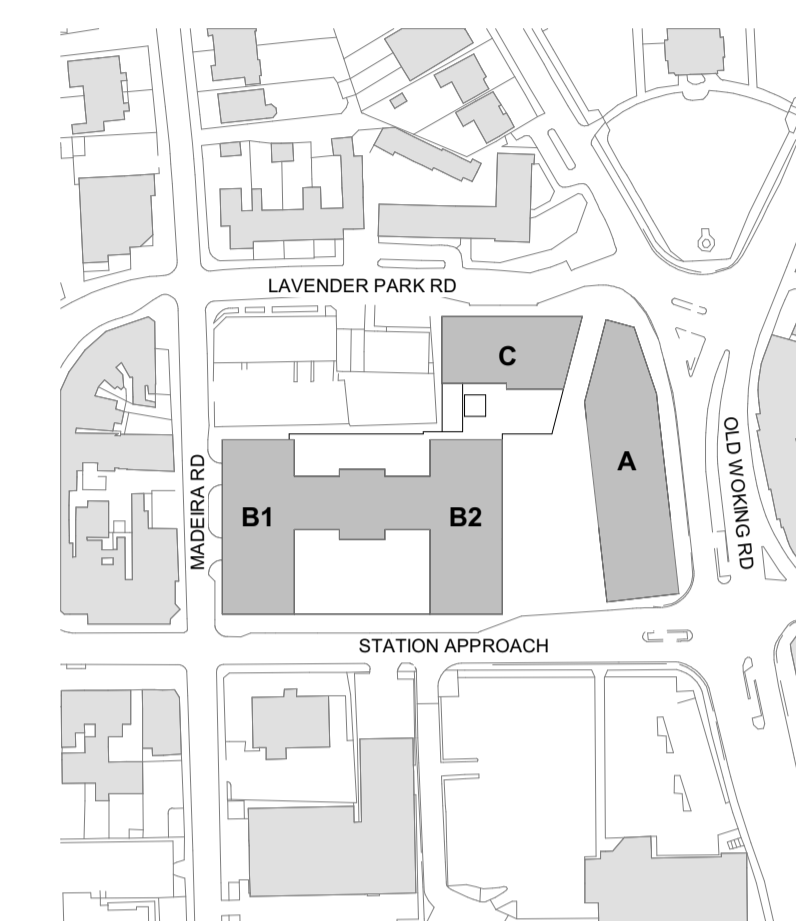
Lavender Park Rd

Madeira Rd

Old Woking Rd



NOTE:
Refer to drawing 2013 for ground floor plan
Refer to drawing 2011 for basement floor plan



Site Location Key Plan
1 : 2000



Scale 1:200

- Key**
- ▲ Residents' Entrance
 - ▲ Public Entrance
 - Continuous building plan on different level
 - - - Blocks above

Rev	Date	Description	Dwn	Ckd
C	13-02-24	Issued for NMA	TC	JJB
B	11-03-22	PLANNING UPDATE: amended balconies, facade & sky bar	FG	CJP
A	11-01-21	PLANNING	CJP	SA
	16-12-20	First Issue	CJP	AMN

West Byfleet - Station Road
Lower Ground Floor Plan

WBF. -2012 REV C

PLANNING
Drawn SB Checked CJP Date 16 DEC 2020 Scale @ A1 1:200

Station Approach