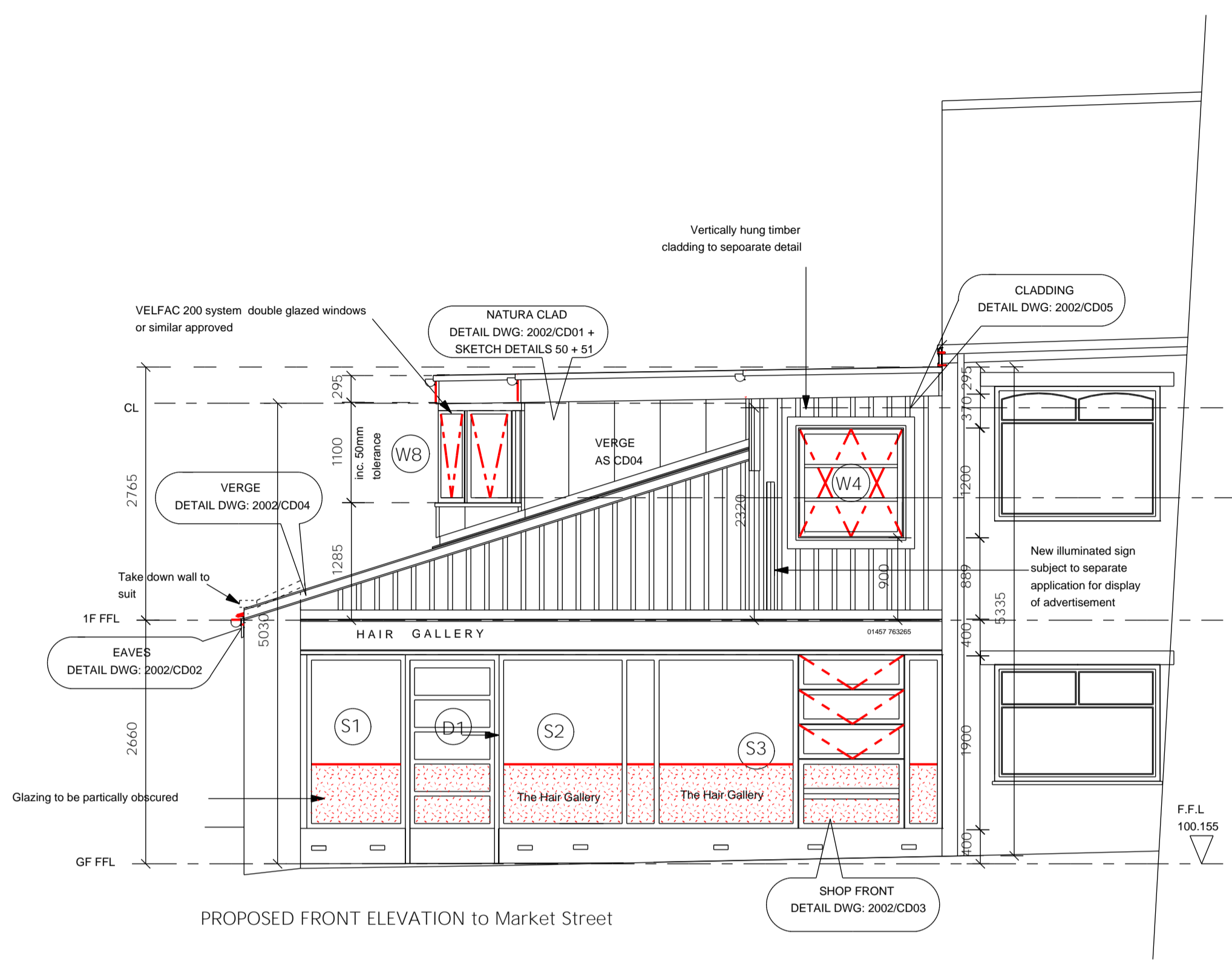
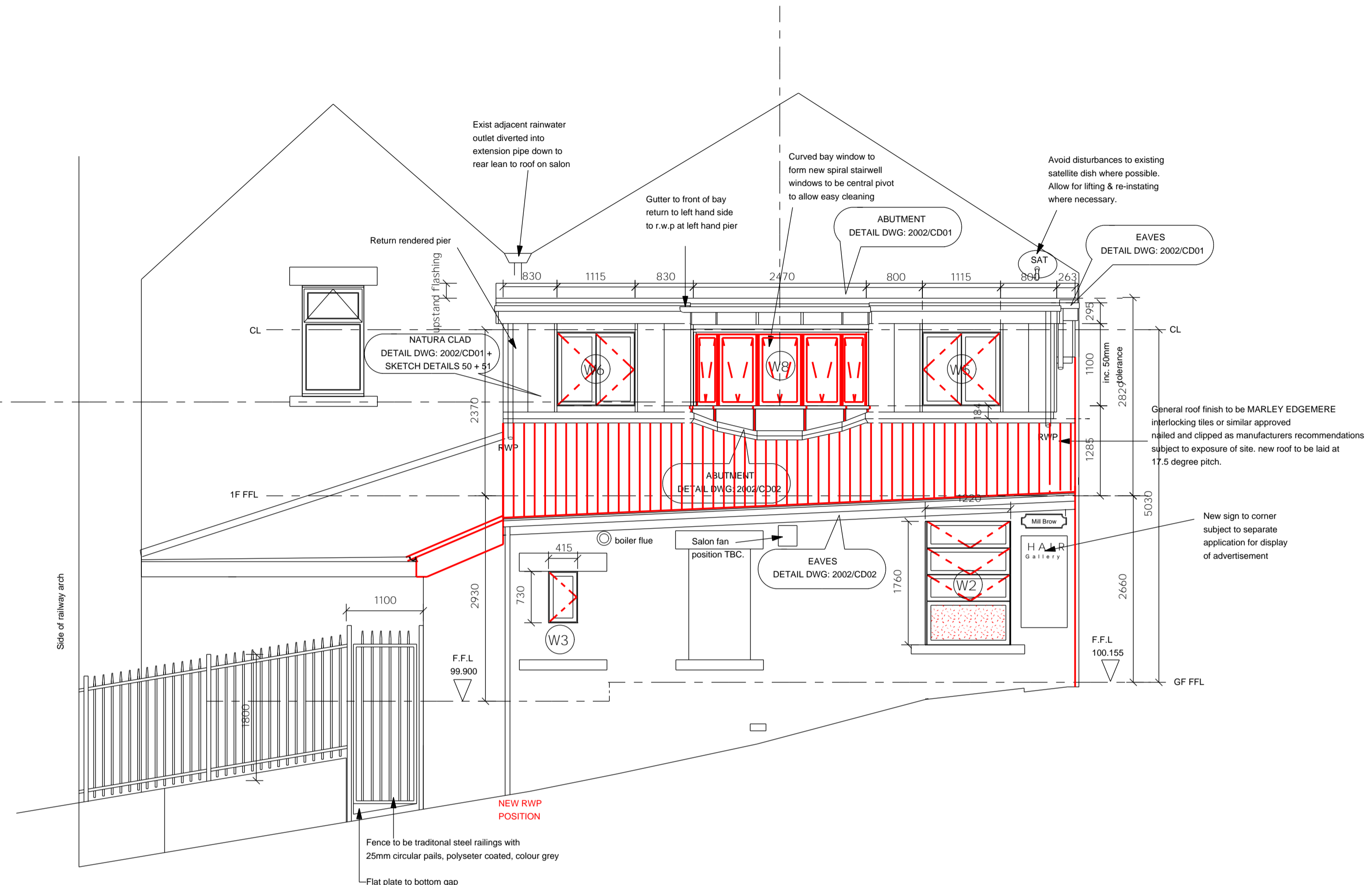


Notes

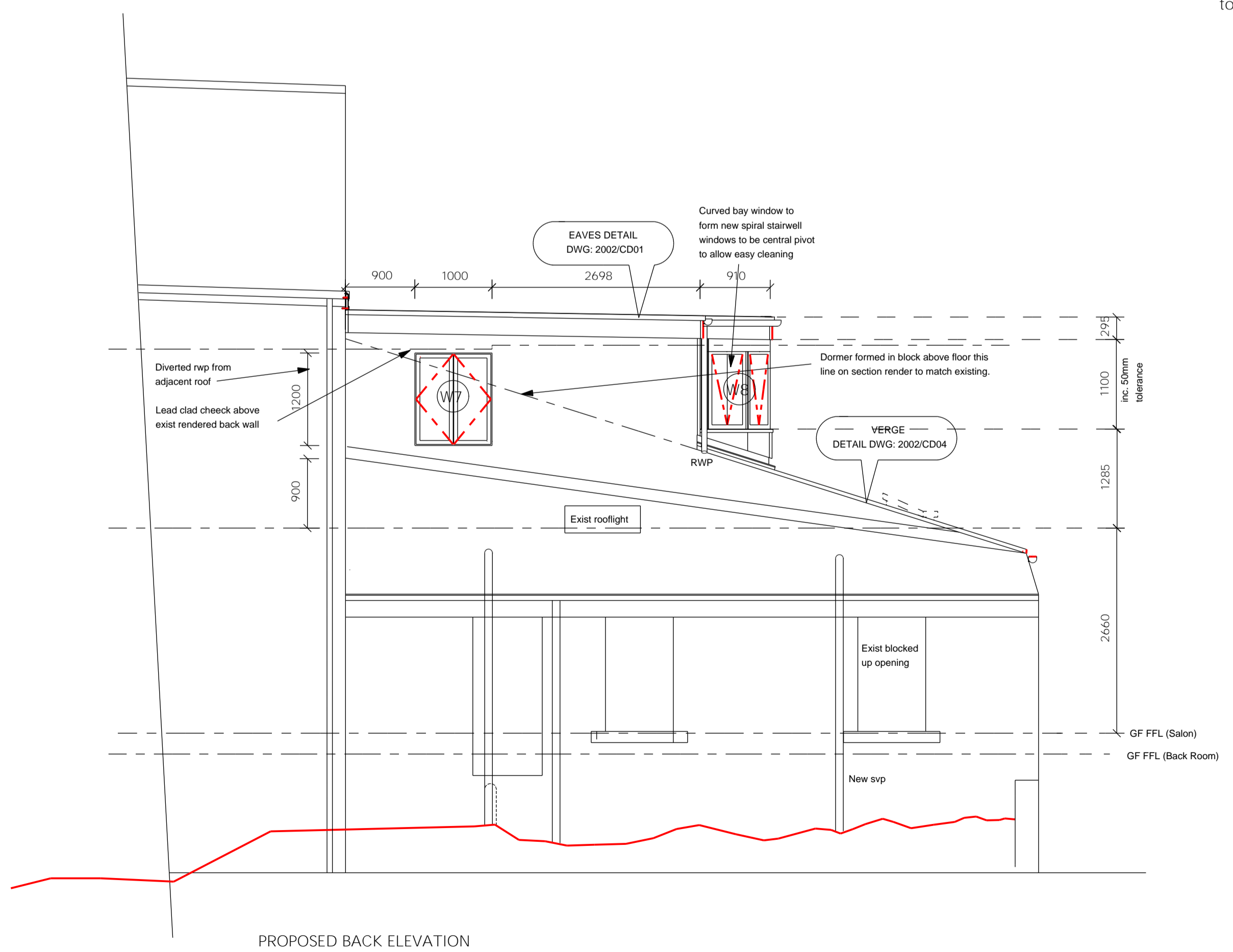
Do not scale from this drawing.  
All dimensions must be checked on site by contractor prior to construction.



PROPOSED FRONT ELEVATION to Market Street



PROPOSED SIDE ELEVATION to Mill Brow



PROPOSED BACK ELEVATION

- Rev K 23/08: Natura Plus changed to Natura, r.w.p's revised, W7 changed.
- Rev J September 08: Lead cladding replaced. Window opening patterns corrected.
- Rev H August 08: minor alterations
- Rev G July 08: front screen revised
- Rev F April 08: Scheme revised for b.regs
- Rev E March 08: Scheme revised for b.regs
- Rev D 4 Oct 07: Scheme altered for planning re-submission
- Rev C 1 Jun 07: roof light to stair added, front elevation glazing extended to client requirements, sign to side elevation added. Key removed. Minor line corrections and additional explanatory notes.
- Rev B 22 May 07: Drawing converted to show enabling works

**Bernard Taylor Partnership Ltd.**  
Architects  
ELIZABETH HOUSE, 486 DIDSBURY ROAD, HEATON MERSEY,  
STOCKPORT, CHESHIRE, SK4 3BS.  
Tel: 0161-442 1221  
Fax: 0161-442 1672  
E-mail: info@BernardTaylor.co.uk

Client  
**Gillian Crump**

Job  
**Hair Galley  
Broadbottom**

Description  
Revised scheme proposal  
Option 3  
Proposed Elevations

Drawn: VG Date: 12/09/07 Scale: 1:50@A1

Job No.	Dwg No.	Rev.
2002	05	K