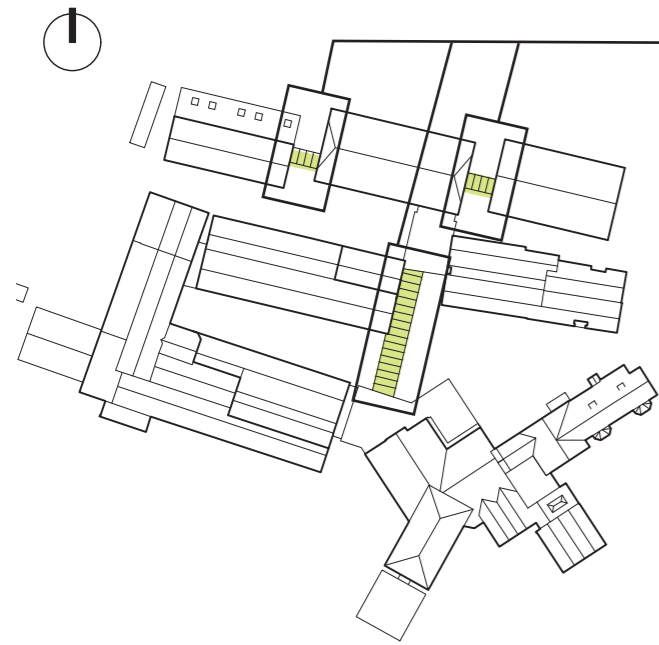


GLAZED LINKS

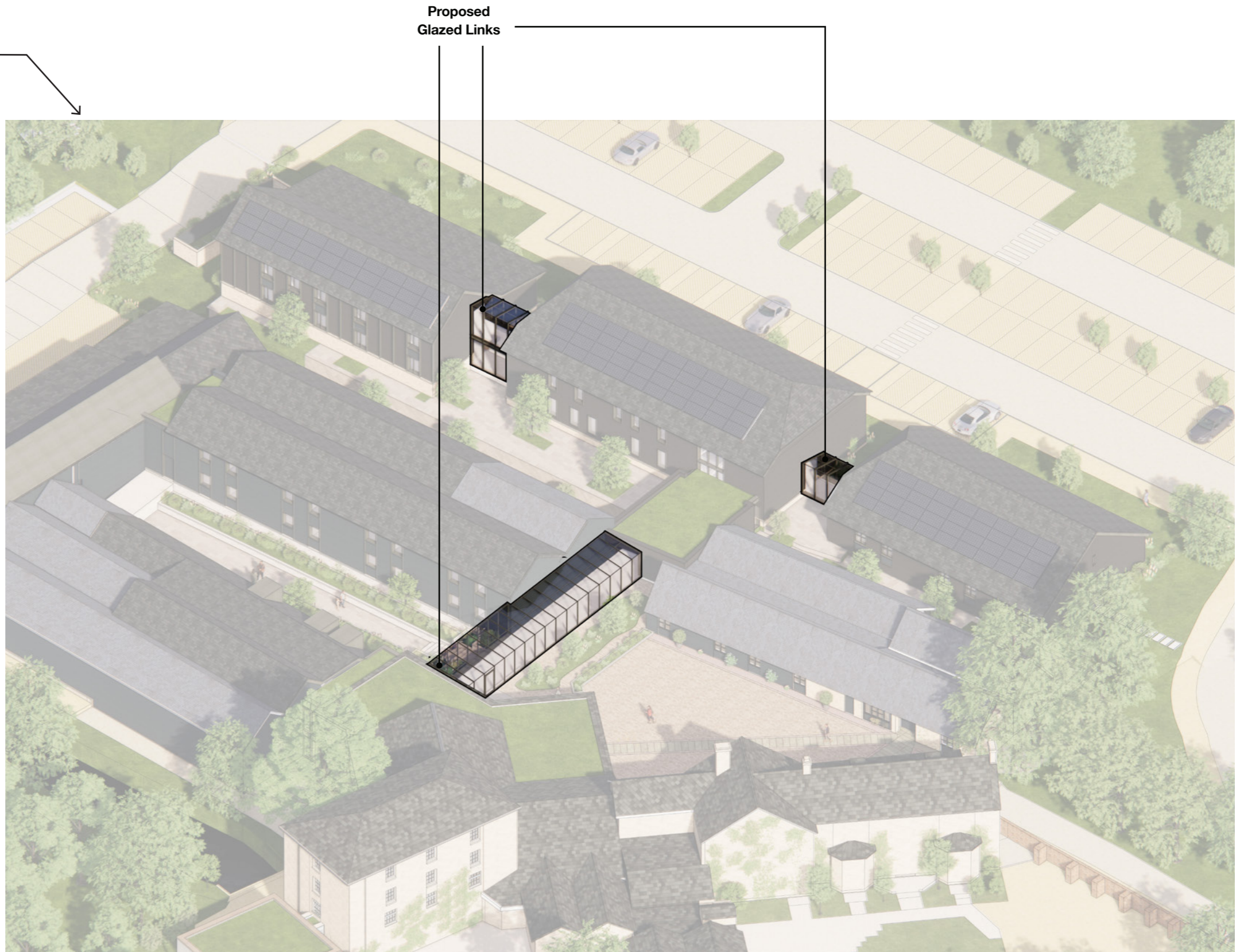


■ Glazed links

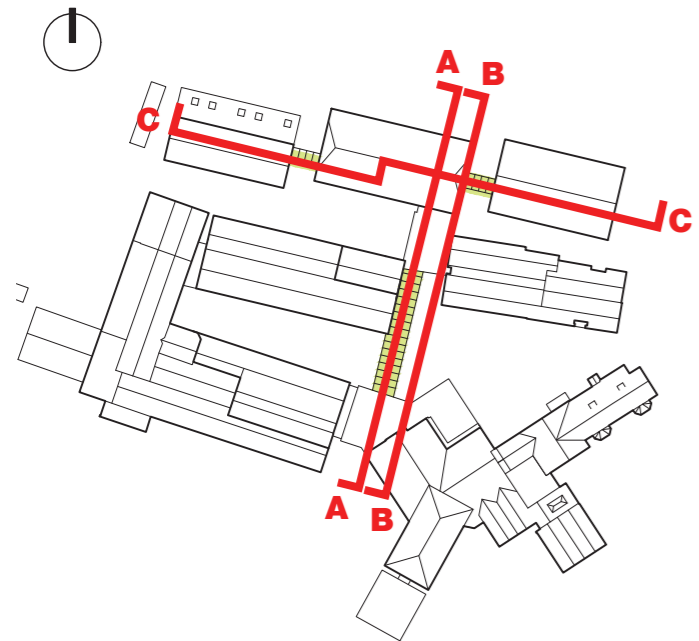
A series of glazed links is proposed to connect the various buildings within the planned hotel complex.

The rationale behind this proposal is to ensure the proper functionality of the hotel, enabling access for servicing to all the wings of the hotel.

These links are designed as lightweight glazed structures to minimize the impact of their massing on the existing architecture, as well as to allow for visual connection between the different landscaped spaces and courtyards.

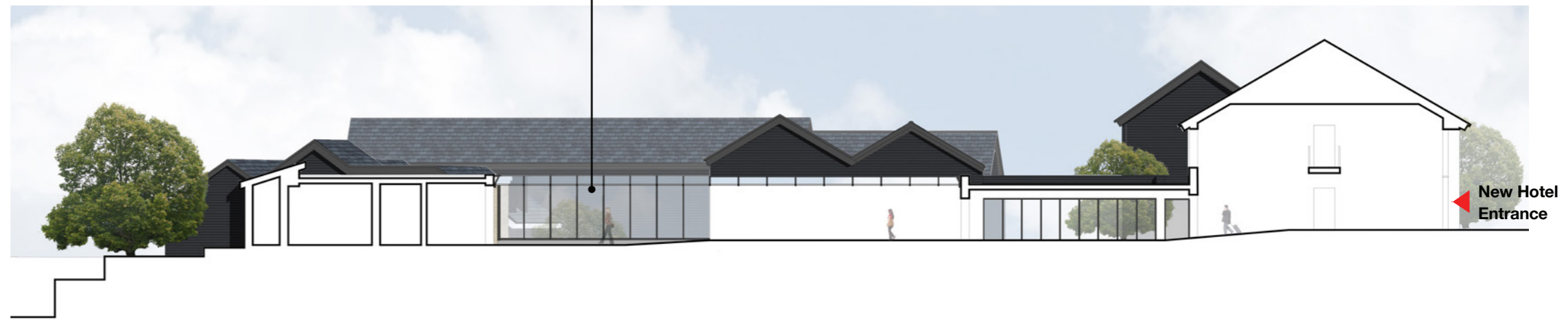


GLAZED LINKS



Glazed links

SECTION AA



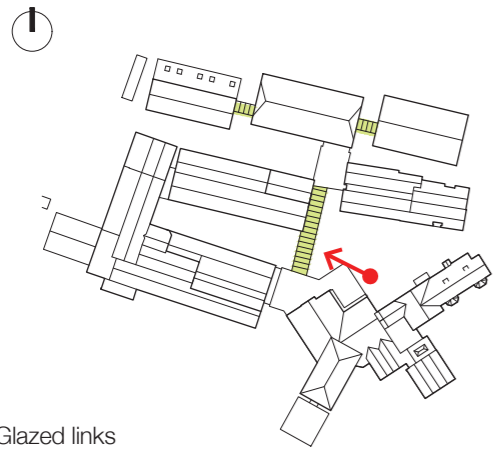
SECTION BB



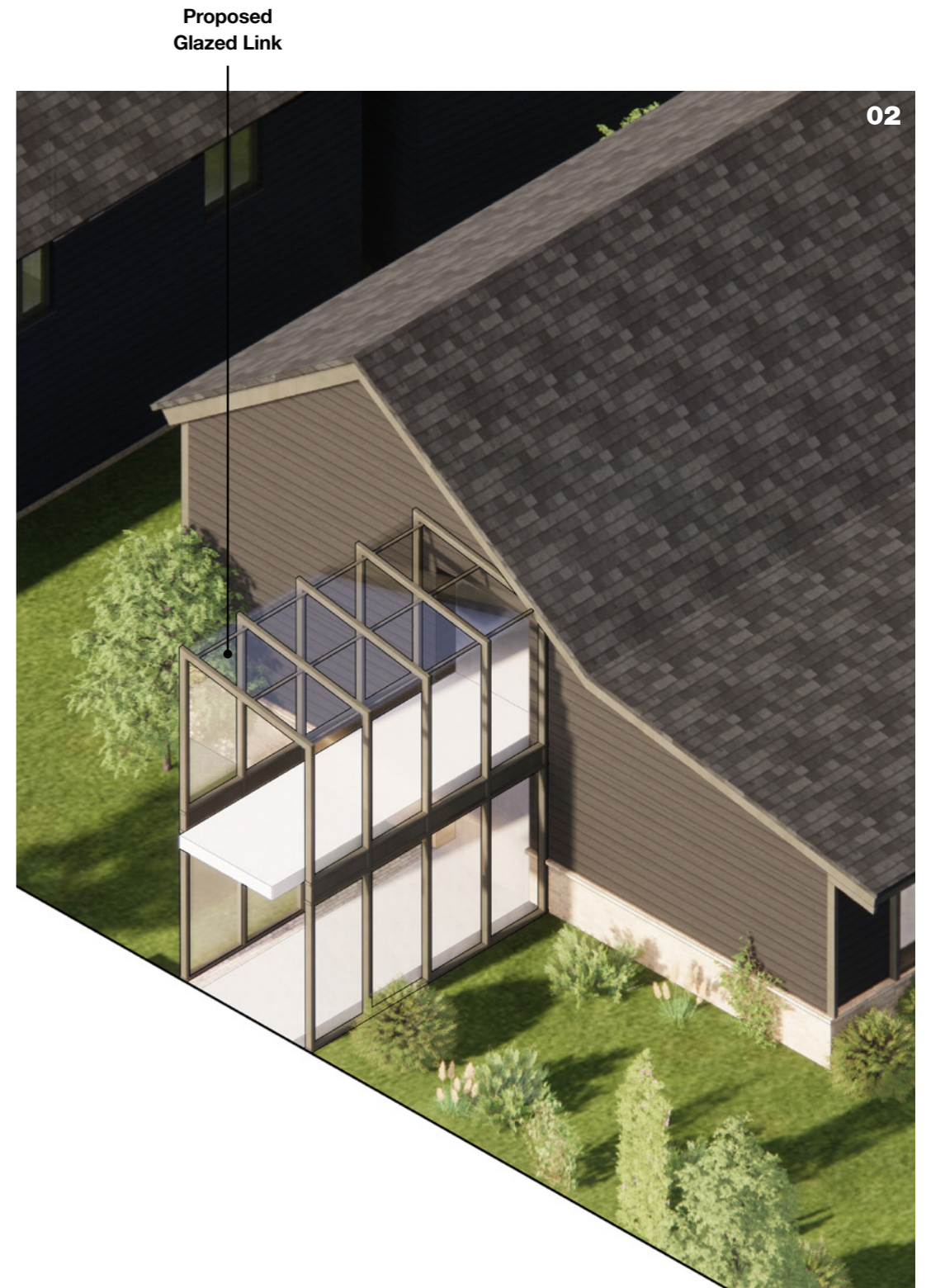
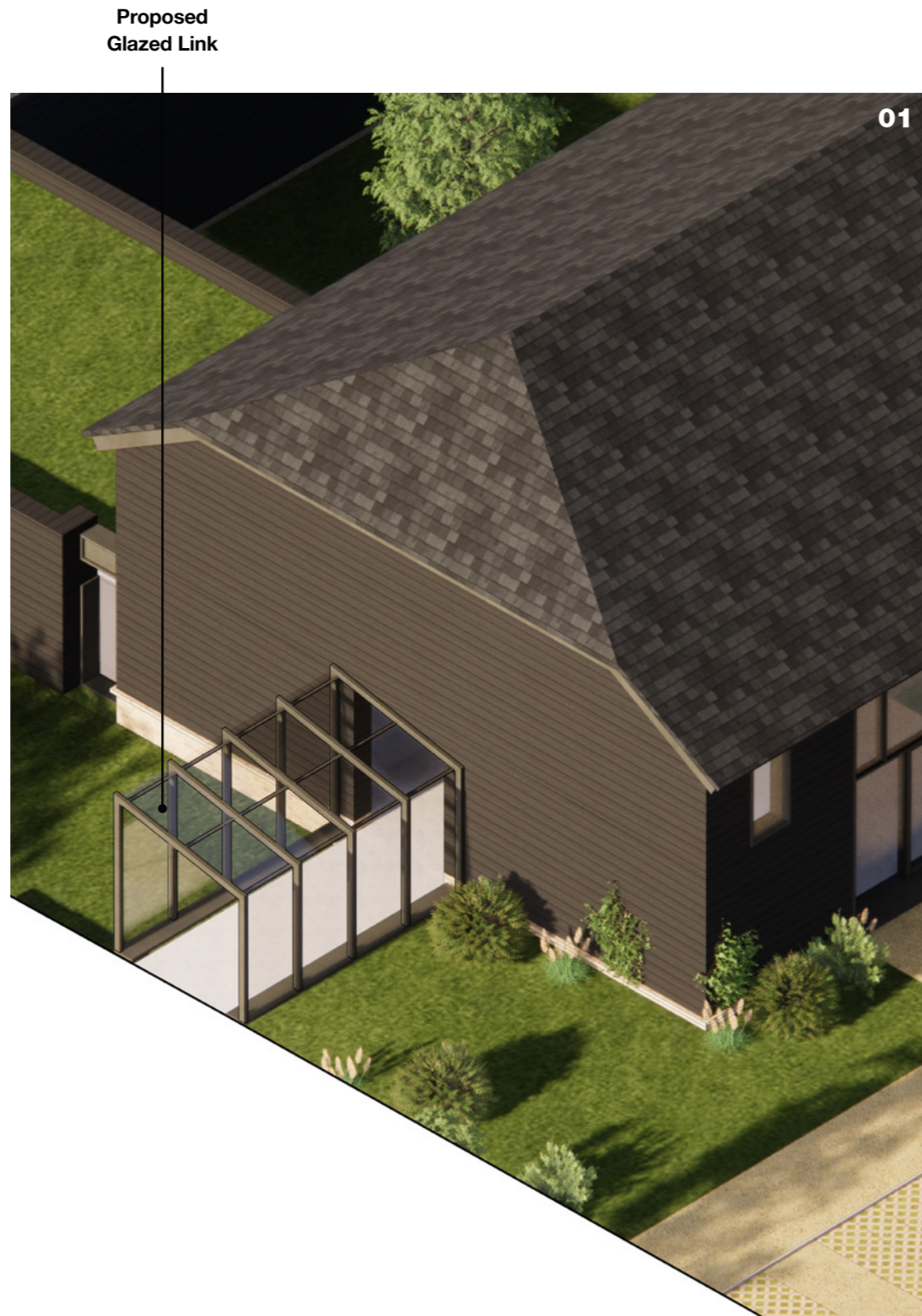
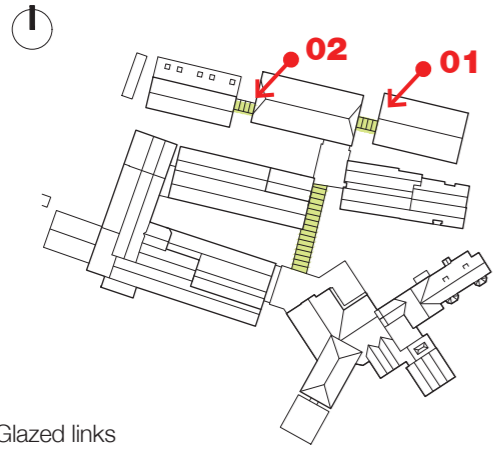
SECTION CC



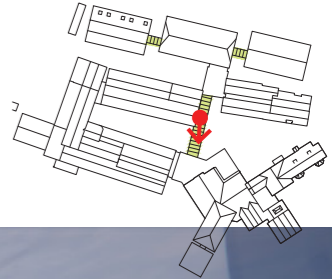
GLAZED LINKS



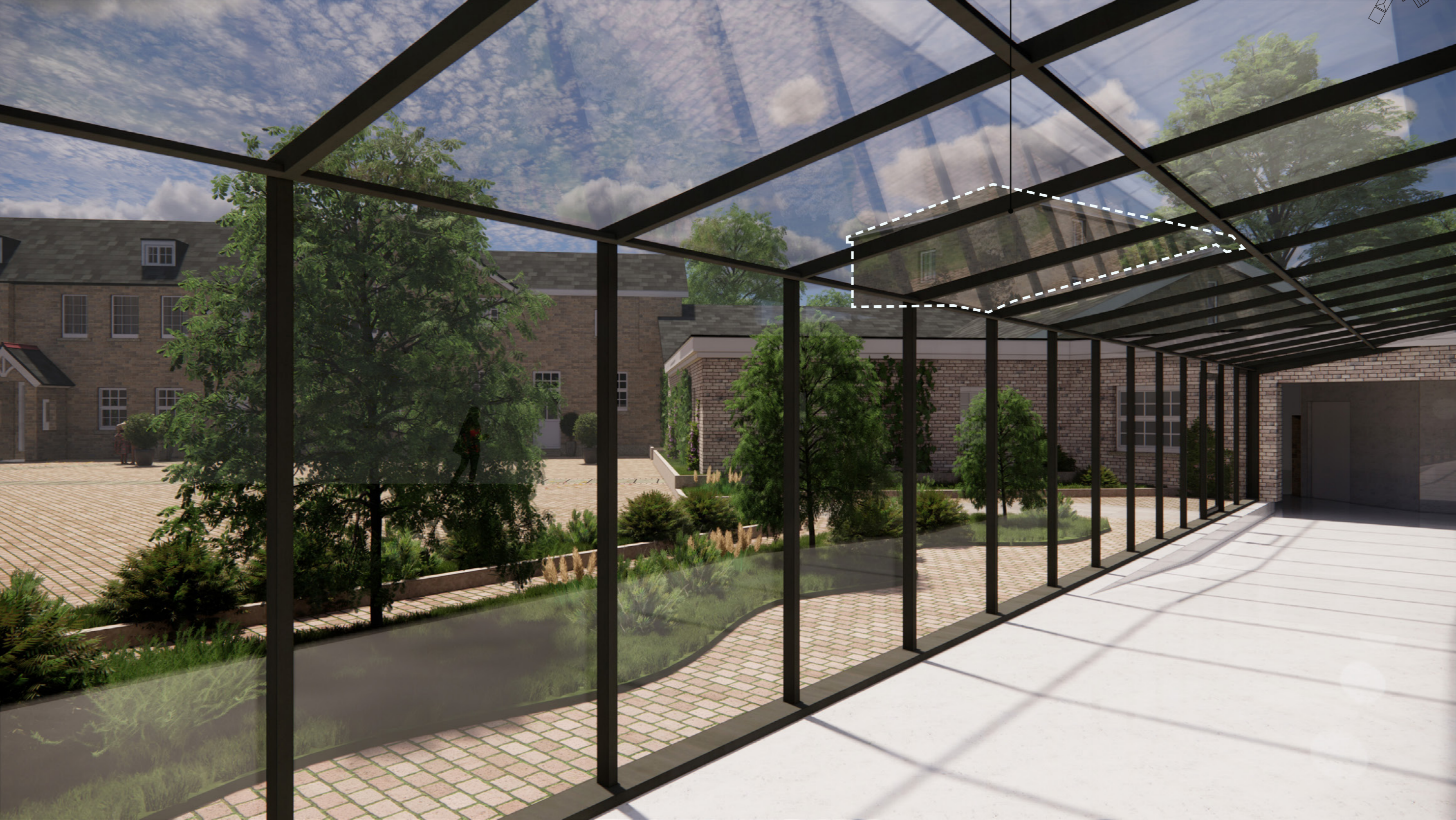
GLAZED LINKS



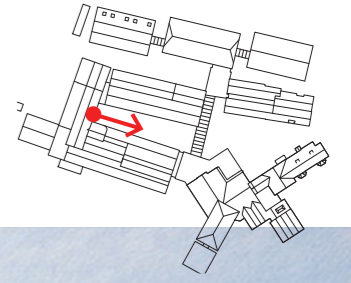
GLAZED LINKS



Listed Building



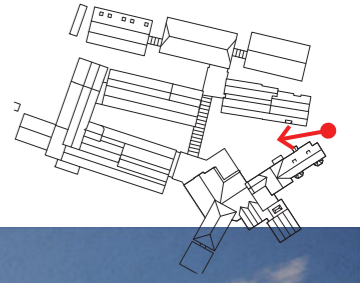
VISUALS



Listed Building



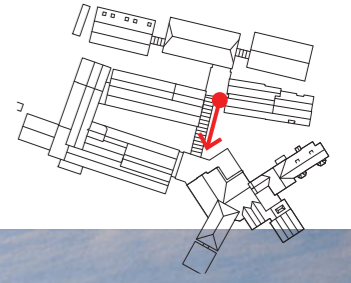
VISUALS



Listed Building



VISUALS



Listed
Building

