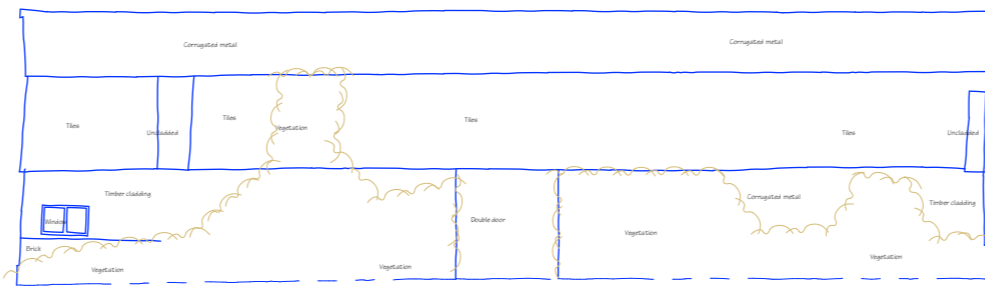
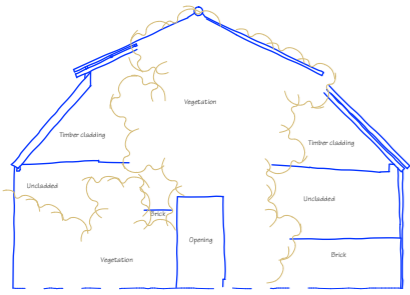
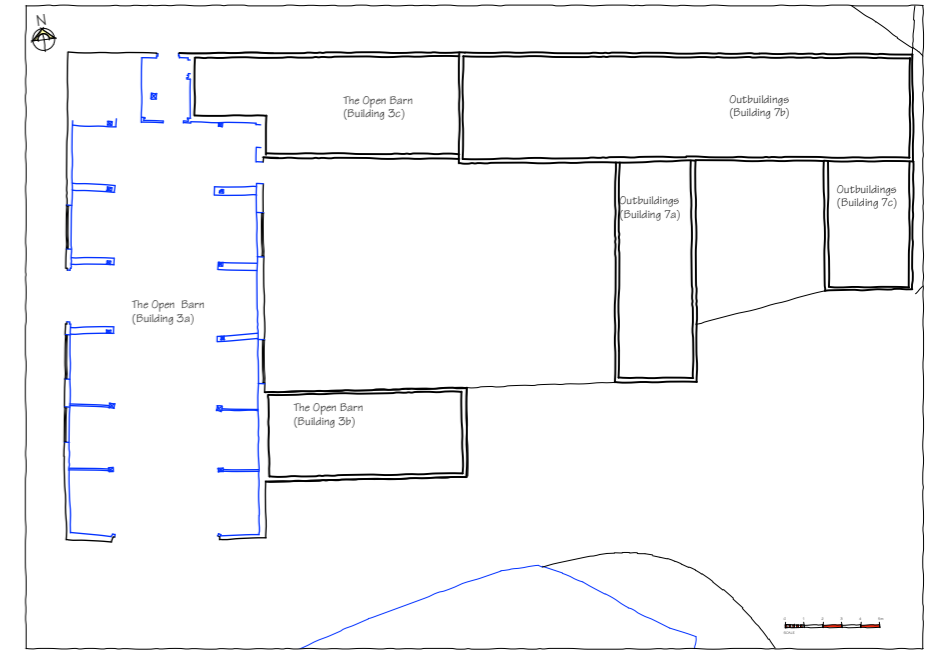


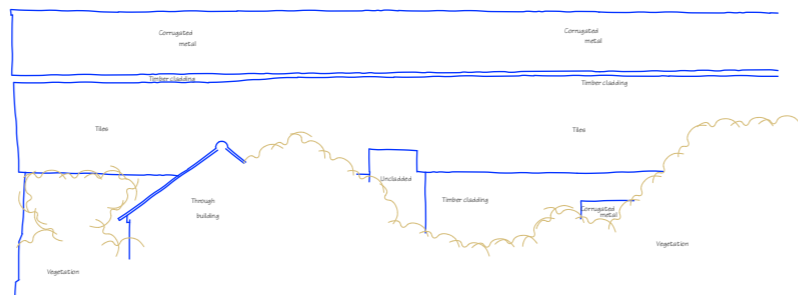
Open Barn Elevation 10
Datum 60.00m
Open Barn - South Elevation



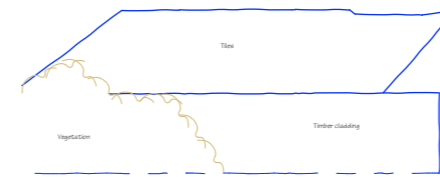
Open Barn Elevation 11
Datum 60.00m
Open Barn - West Elevation



Open Barn Elevation 1
Datum 60.00m
Open Barn - North Elevation



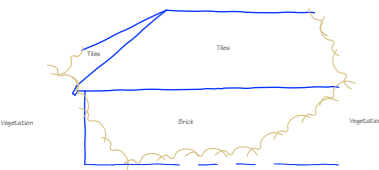
Open Barn Elevation 7
Datum 60.00m
Open Barn - East Elevation



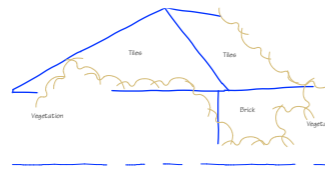
Open Barn Elevation 8
Datum 60.00m
Open Barn (3b) - North Elevation



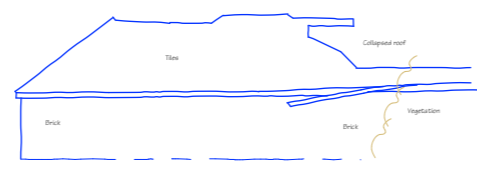
Open Barn Elevation 9
Datum 60.00m
Open Barn (3b) - East Elevation



Open Barn Elevation 2
Datum 60.00m
Open Barn (7c) - East Elevation



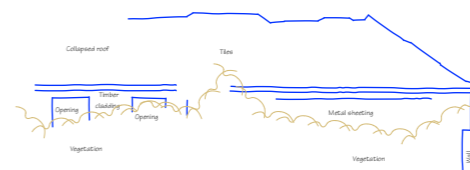
Open Barn Elevation 3
Datum 60.00m
Open Barn (7c) - South Elevation



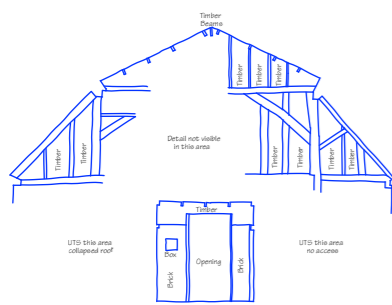
Open Barn Elevation 4
Datum 60.00m
Open Barn (7a) - East Elevation



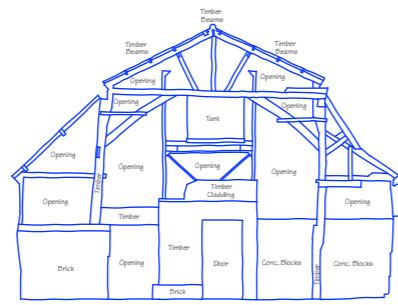
Open Barn Elevation 5
Datum 60.00m
Open Barn (7a) - South Elevation



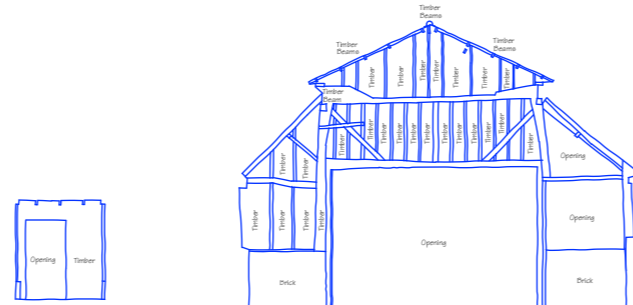
Open Barn Elevation 6
Datum 60.00m
Open Barn (7a) - West Elevation



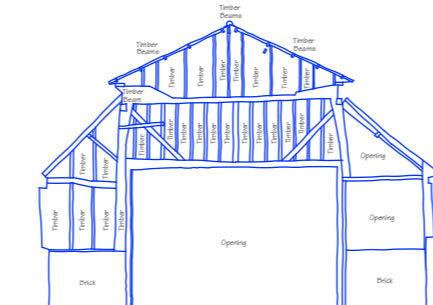
Open Barn Internal Elevation 2
Datum 60.00m



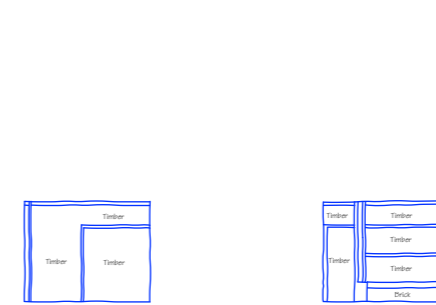
Open Barn Internal Elevation 3
Datum 60.00m
Open Barn Internal Elevation 3



Open Barn Internal Elevation 4
Datum 60.00m



Open Barn Internal Elevation 5
Datum 60.00m



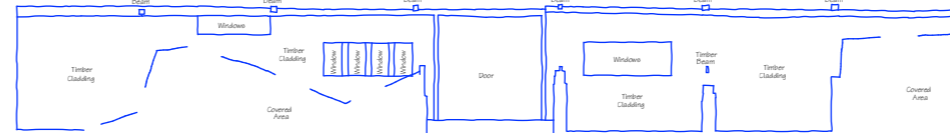
Open Barn Internal Elevation 6
Datum 60.00m



Open Barn Internal Elevation 7
Datum 60.00m



Open Barn Internal Elevation 8
Datum 60.00m
Open Barn Internal Elevation 8



Open Barn Internal Elevation 1
Datum 60.00m

Rev:	Date:	Revision:
t	r	a
a	r	c
i	n	g
h	o	u
s	e	
a	r	c
h	i	t
e	c	t
s		

2 Rose Cottage • North Green Rd • Pulham St Mary • Norfolk • IP214XX

Tel: 01397 608057 M: 0779912008 e-mail: robmf@zoo.co.uk

Project: Residential Conversion of Agricultural Buildings at Battsford Hall Farm, Church Road, Battsford IP14 2HG

Drawing: Existing Elevations Sheet 3

The Open Barn

Scale: 1:100 @ A1 or 1:200 @ A3 Date: Feb 2024

Job Ref: BAT - 007 Dwg No. Rev:

This drawing is copyright. This drawing must not be scaled. Before commencing any work the contractor must set out and check all dimensions.

