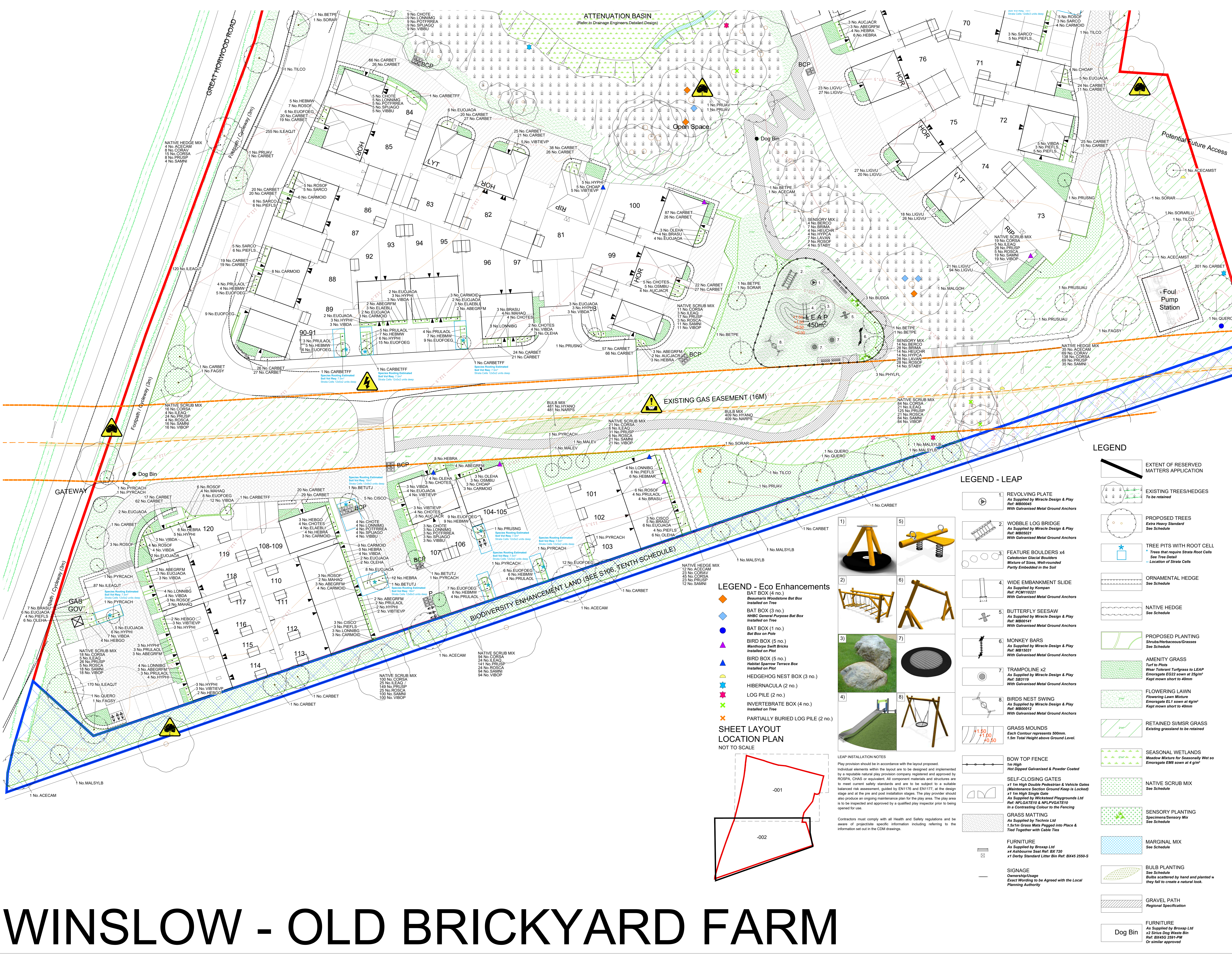


THIS DRAWING IS TO BE READ IN CONJUNCTION WITH SEPARATE GROUP / SITE SPECIFIC CONSTRUCTION NOTES AND MATERIALS SPECIFICATION.

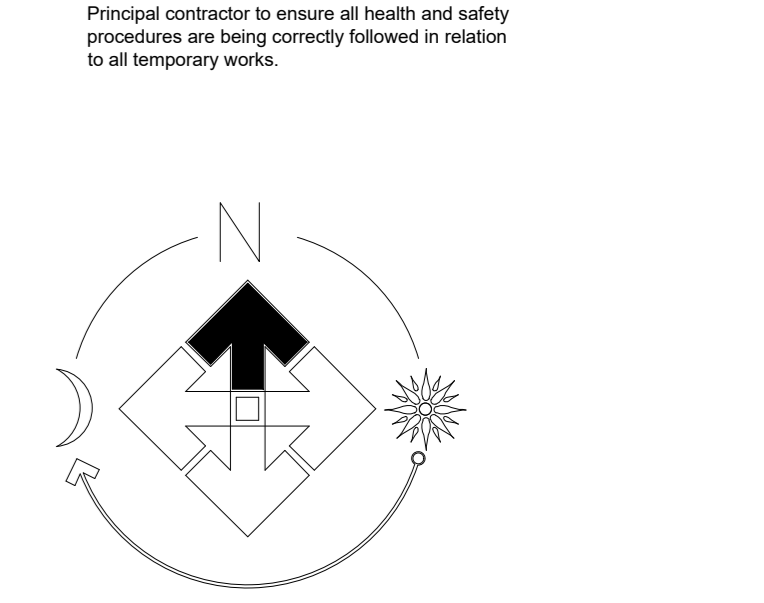
DRAWING NOTES
 All tree and shrub locations and species must be taken into consideration by the project Structural Engineer to ensure that foundation design accords with the specifications set out in Chapter 4 of the NHBC Standards. The Landscape Contractor must ensure that plant material is planted in the locations shown and with NO SUBSTITUTIONS made without consulting the Group Landscape Design Department. It is the Landscape Contractor's responsibility to ensure that all underground services have been located and identified in advance of tree pit excavation so that no services are damaged or compromised by tree planting. Any changes to tree positions, species or specifications must be approved by the Group Landscape Design Department. Underground service strips are to be kept free of all plant material. Contractors must comply with all Health and Safety regulations and be aware of project/site specific information including referring to the information set out in the CDM drawings.



CDM LEGEND

	Brief description of risk
	Caution overland / underground services
	Gas easement
	Trees have protection order in place, guarding required

NOTES:
 The Landscape Contractor to ensure all health and safety procedures are being correctly followed in relation to all temporary works.



PLOT NUMBER SHEET REF.
 SHEET 001 (1-70,78-80)
 SHEET 002 (71-77,81-120)

FOR SPECIFICATION, PLANTING DETAILS & SCHEDULE USE DRAWING SM5145-LS-003

Revision	Date
a	18/05/22
b	27/04/22
c	12/03/22
d	28/11/22
e	28/11/22
f	31/10/22
g	24/11/22
h	28/02/23
i	28/02/23
j	07/03/23
k	27/08/23
l	27/08/23

Winslow - Old Brickyard Farm
 Site Landscaping

Scale: 1:250 @A0
 Date: Nov 2021
 Drawn: LP
 Checked: FmJ

BLOOR HOMES
 J S BLOOR (SERVICES) LIMITED
 ASHBY ROAD, MEASHAM, SWALDINCOTE,
 DERBYSHIRE DE12 7 JF
 TELEPHONE 01530 270100 FACSIMILE 01530 270006

Drawing No: **SM5145-LS-002o**

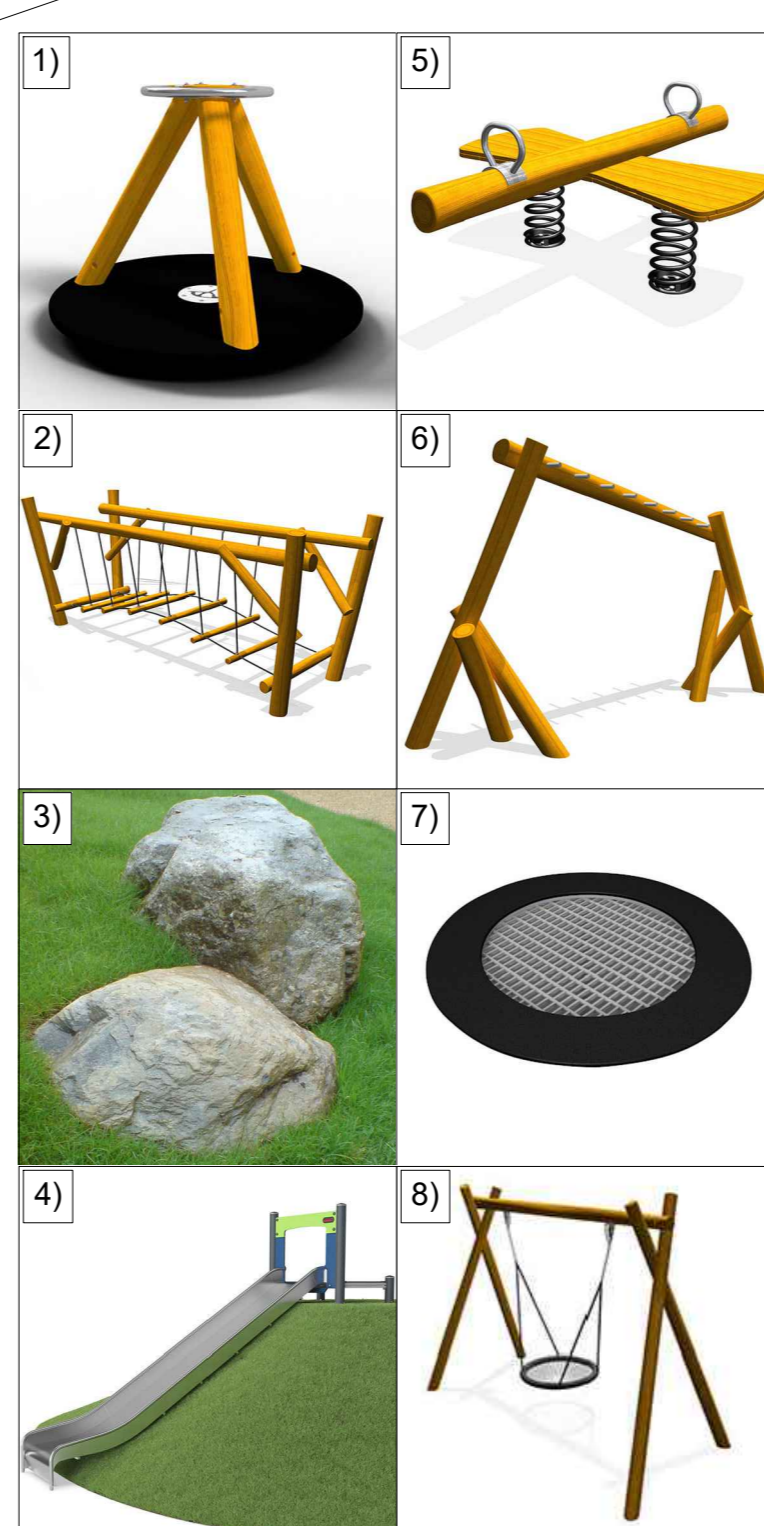
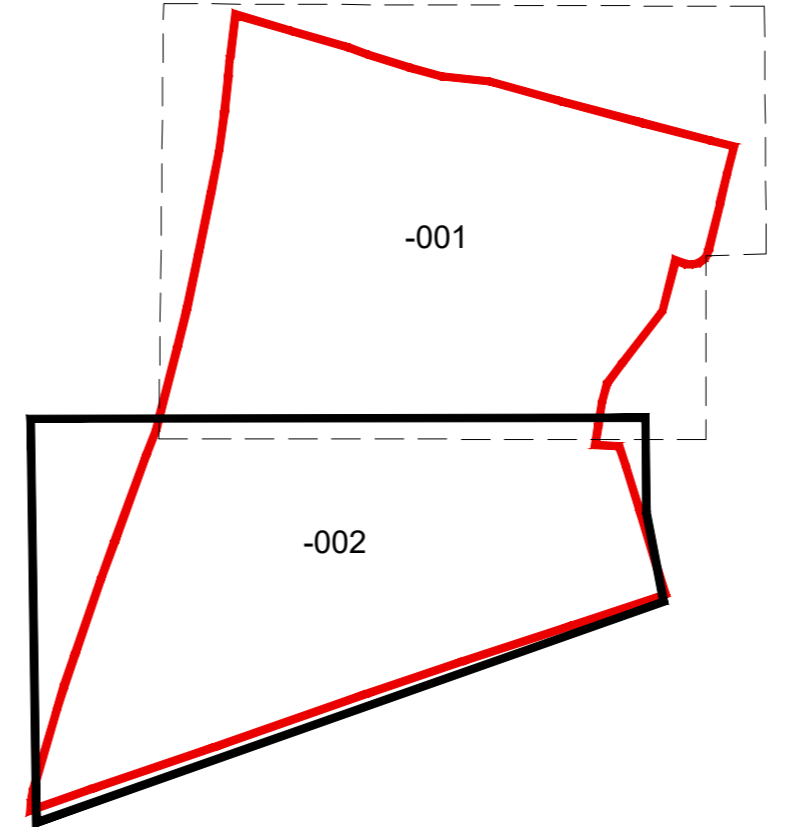
LEGEND - LEAP

- 1. REVOLVING PLATE**
As Supplied by Miracle Design & Play Ref: MB00045 With Galvanised Metal Ground Anchors
- 2. WOBBLE LOG BRIDGE**
As Supplied by Miracle Design & Play Ref: MB05021 With Galvanised Metal Ground Anchors
- 3. FEATURE BOULDERS x4**
Caledonian Glacial Boulders Mixture of Sizes, Well-rounded Partly Embedded in the Soil
- 4. WIDE EMBANKMENT SLIDE**
As Supplied by Kompan Ref: PCM10221 With Galvanised Metal Ground Anchors
- 5. BUTTERFLY SEESAW**
As Supplied by Miracle Design & Play Ref: MB00141 With Galvanised Metal Ground Anchors
- 6. MONKEY BARS**
As Supplied by Miracle Design & Play Ref: MB15031 With Galvanised Metal Ground Anchors
- 7. TRAMPOLINE x2**
As Supplied by Miracle Design & Play Ref: MB15031 With Galvanised Metal Ground Anchors
- 8. BIRDS NEST SWING**
As Supplied by Miracle Design & Play Ref: MB00012 With Galvanised Metal Ground Anchors
- GRASS MOUNDS**
Each Contour represents 500mm. 1.5m Total Height above Ground Level.
- BOW TOP FENCE**
1m High Hot Dipped Galvanised & Powder Coated
- SELF-CLOSING GATES**
x1 1m High Double Pedestrian & Vehicle Gates (Maintenance Section Ground Keep is Locked) x1 1m High Single Gate As Supplied by Wickstead Playgrounds Ltd Ref: NPLGATE10 & NPLPGATE10 In a Contrasting Colour to the Fencing
- GRASS MATTING**
As Supplied by Technic Ltd 1.5x1m Grass Mats Pegged into Place & Tied Together with Cable Ties
- FURNITURE**
As Supplied by Broxap Ltd x4 Ashbourne Seat Ref: BX 720 x1 Derby Standard Litter Bin Ref: BX45 2550-S
- SIGNAGE**
Ownership/Usage Exact Wording to be Agreed with the Local Planning Authority

LEGEND - Eco Enhancements

- BAT BOX (4 no.)**
Beaumonts Woodstone Bat Box Installed on Tree
- BAT BOX (3 no.)**
NHC General Purpose Bat Box Installed on Tree
- BAT BOX (1 no.)**
Bat Box on Pole
- BIRD BOX (5 no.)**
Manthorpe Swift Bricks Installed on Plot
- BIRD BOX (5 no.)**
Habitat Sparrow Terrace Box Installed on Plot
- HEDGEHOG NEST BOX (3 no.)**
- HIBERNACULA (2 no.)**
- LOG PILE (2 no.)**
Installed on Tree
- INVERTEBRATE BOX (4 no.)**
Installed on Tree
- PARTIALLY BURIED LOG PILE (2 no.)**

SHEET LAYOUT LOCATION PLAN
 NOT TO SCALE



LEAP INSTALLATION NOTES

Play provision should be in accordance with the layout proposed. Individual elements within the layout are to be designed and implemented by a reputable natural play provision company registered and approved by ROSPA, CHAS or equivalent. All component materials and structures are to meet current safety standards and are to be subject to a suitable balanced risk assessment, guided by EN1176 and EN1177, at the design stage and at the pre and post installation stages. The play provider should also produce an ongoing maintenance plan for the play area. The play area is to be inspected and approved by a qualified play inspector prior to being opened for use.

Contractors must comply with all Health and Safety regulations and be aware of project/site specific information including referring to the information set out in the CDM drawings.

WINSLOW - OLD BRICKYARD FARM