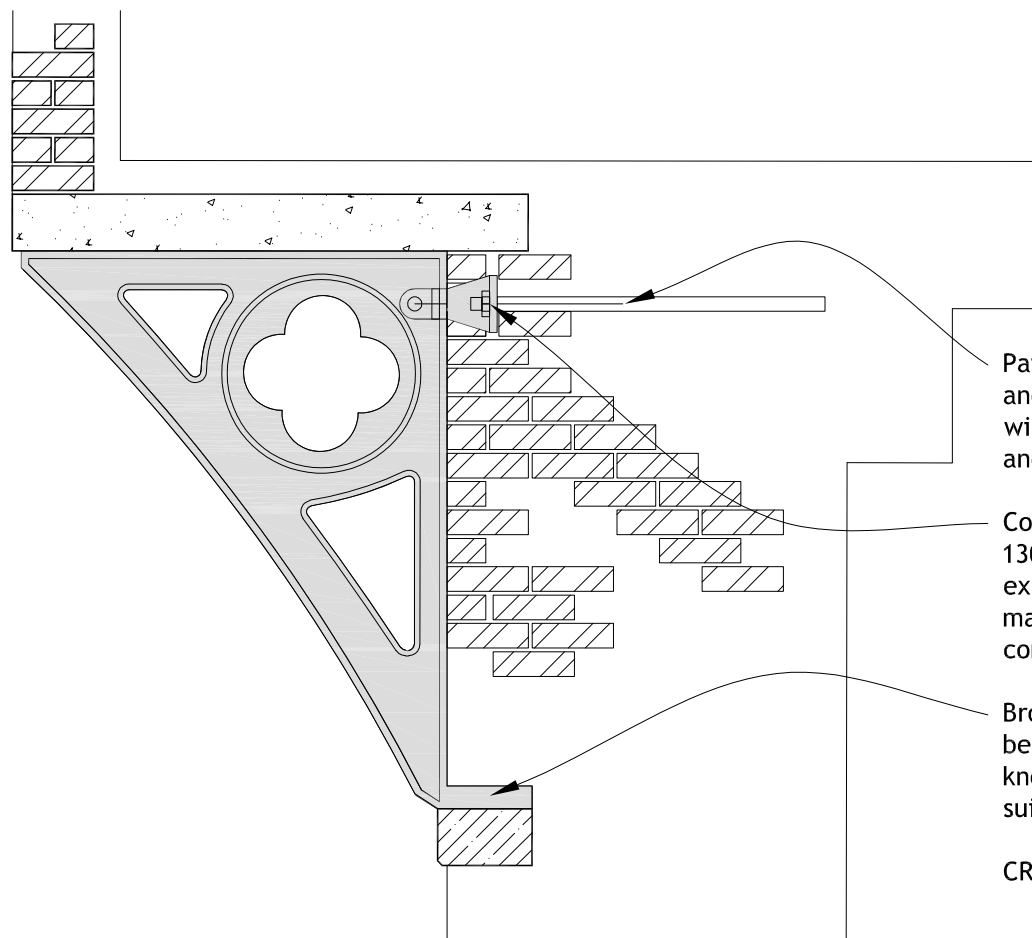


THESE DRAWINGS ARE THE COPYRIGHT OF ELMSTONE ENGINEERING LTD AND MAY NOT BE ALTERED OR REPRODUCED IN ANY WAY WITHOUT WRITTEN PERMISSION FROM ELMSTONE ENGINEERING LTD.

ALL LEVELS AND DIMENSIONS WILL NEED TO BE CONFIRMED ON SITE PRIOR TO ORDERING MATERIALS.

DO NOT DIMENSION DRAWING

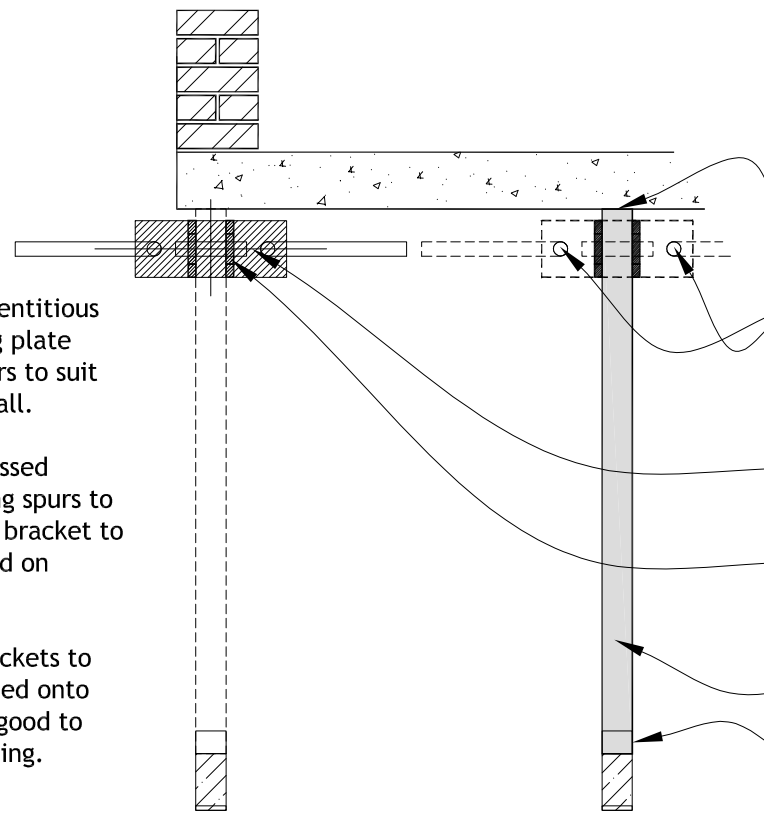


Pair of splayed 32mm diameter cementitious anchors per bracket through backing plate with locking nuts and shaped washers to suit and embedded full depth of brick wall.

Concealed 20mm backing plate recessed 130mm into brickwork and projecting spurs to exposed clamp and bolt to cast iron bracket to match existing; brickwork made good on completion.

Broken integral cast iron spur to brackets to be dowelled and welded and rebedded onto kneeler stone with brickwork made good to suit with lime mortar to match existing.

CROSS SECTION



Stone slab soffit bedded onto cast iron brackets.

Pair of splayed 32mm diameter cementitious anchors per bracket through backing plate with locking nuts and shaped washers to suit and embedded full depth of brick wall.

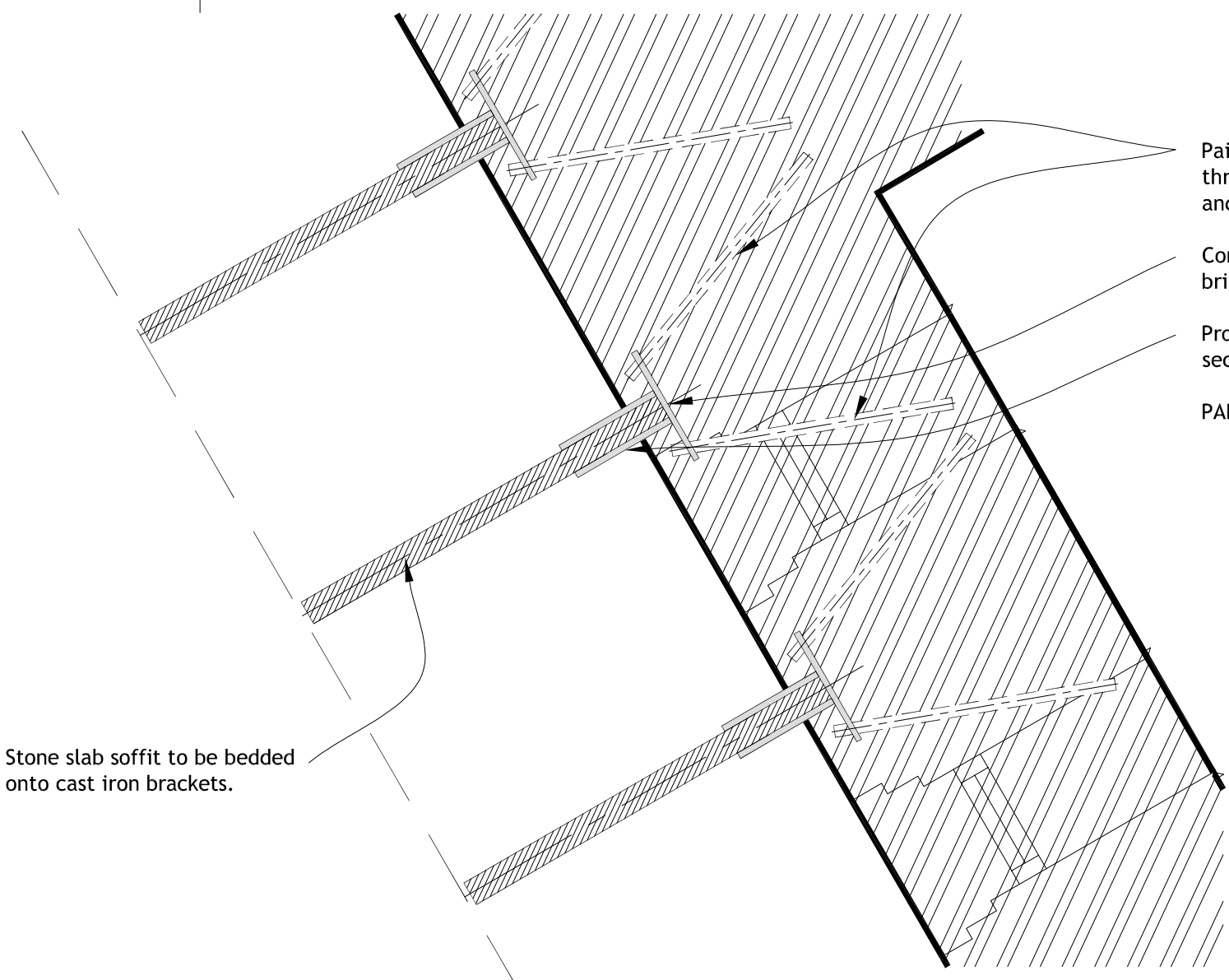
Concealed 20mm backing plate recessed 130mm into brickwork.

Exposed section of clamp and bolt to cast iron bracket to match existing with surrounding brickwork made good with matching lime mortar on completion.

Cast iron brackets.

Broken integral cast iron spur to brackets to be dowelled and welded and rebedded onto kneeler stone with brickwork made good to suit with lime mortar to match existing.

PART ELEVATION



Pairs of splayed 32mm diameter cementitious anchors per bracket through backing plate with locking nuts and shaped washers to suit and embedded full depth of brick wall.

Concealed 20mm backing plate recessed 130mm into brickwork; brickwork made good on completion.

Projecting spurs with full butt weld to backing plate with exposed section to match existing clamp and bolt detail to cast iron bracket.

PART PLAN

Stone slab soffit to be bedded onto cast iron brackets.

SCALE 1:20 @ A3
PROPOSED BRACKET DETAILS

STRUCTURAL ENGINEERING
GARDEROBE REMEDIAL WORKS
Unit 18, Golden Hill Fort
Drawing S1591/04
rev - 05.02.2024
E L M S T O N E
ENGINEERING LTD.
4 QUEENS GATE, EAST COWES, IOW, PO32 6AG
john@elmstoneengineering.com; T. 01983 281099