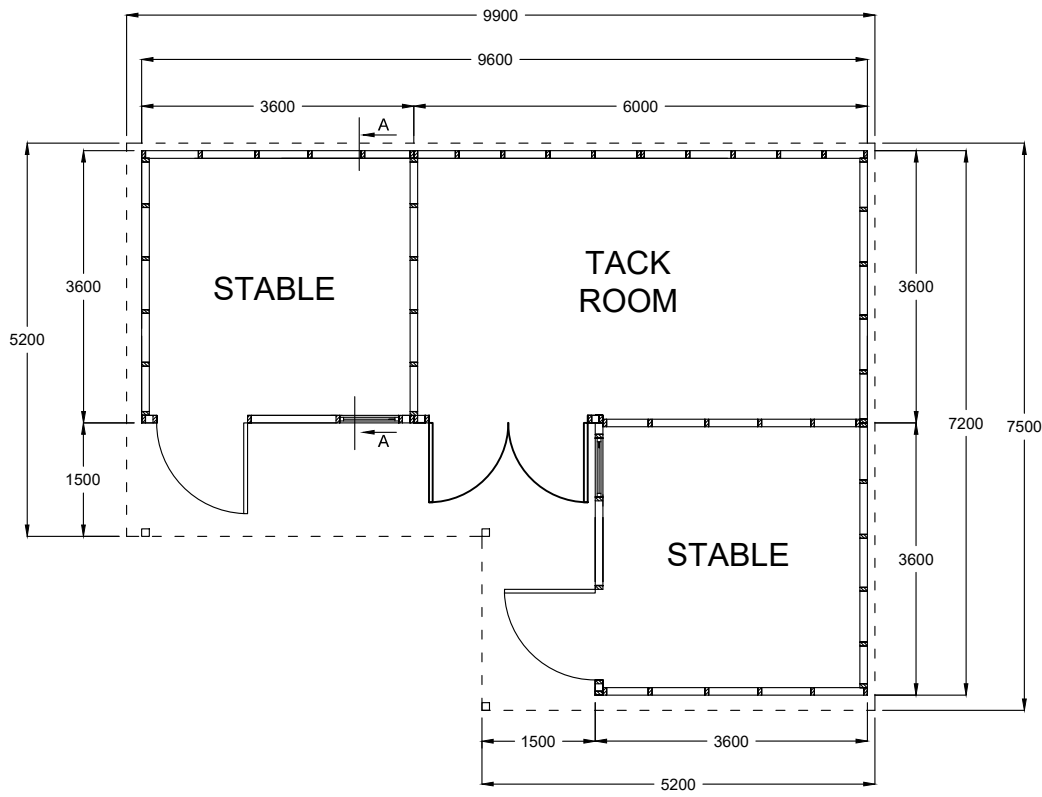
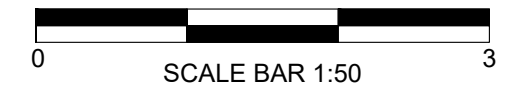
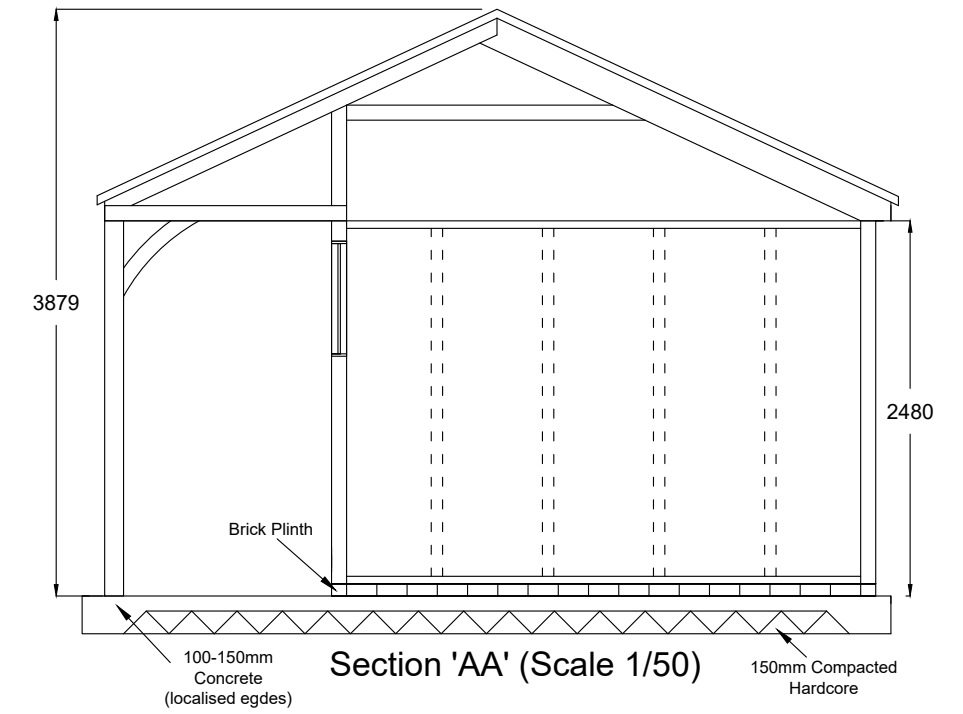
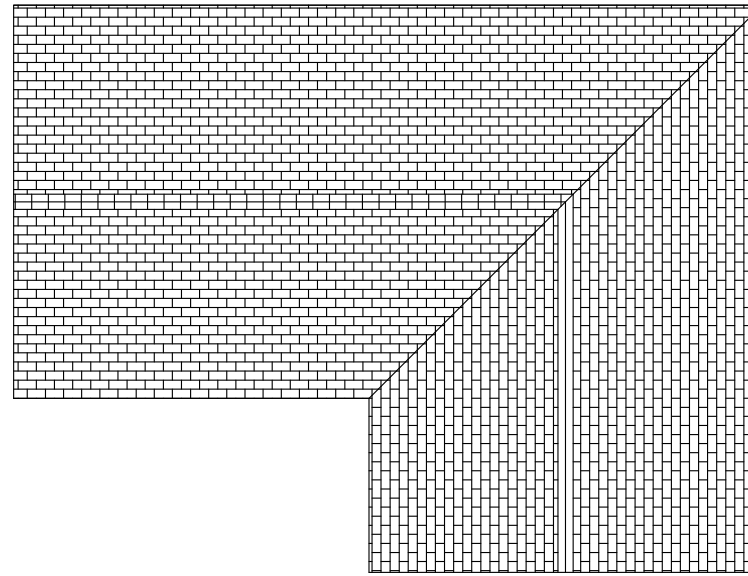


Layout Plan (Scale 1/100)



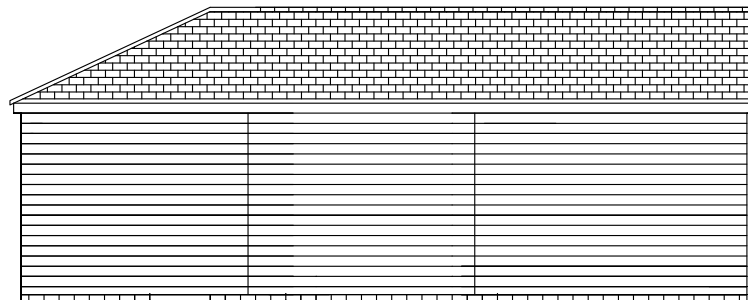
Roof Plan (Scale 1/100)



Elevations (Scale 1/100)



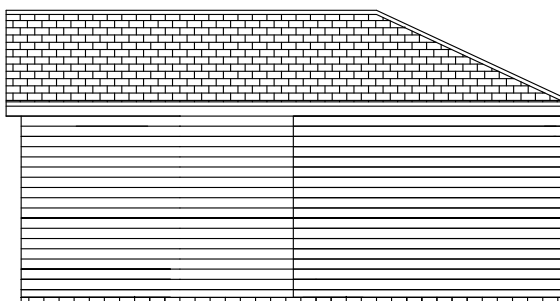
Front Elevation 1



Rear Elevation 1



Front Elevation 2



Rear Elevation 2



SPECIFICATION NOTES

CONCRETE BASE
Concrete base on hardcore subfill by others, above ground level. Four courses of Class 1 brickwork by others on concrete base to perimeters and under partition walls.

EXTERNAL WALLS
Shiplap cladding fitted to 94mm x 47mm studwork frame at maximum 750mm centres, with 94mm x 47mm head plate and base plate. Base plates fixed to concrete base with mild steel straps. Lined internally to eaves height with exterior grade plywood.

DIVIDING WALLS
94mm x 47mm studwork at maximum 750mm centres with 94mm x 47mm head plate and base plate. Baseplate fixed to concrete base with mild steel straps. Lined internally to eaves height with exterior grade plywood.

DOORS
Stable door size 1.2m wide x 2.1 high. Doors are manufactured from 125mm x 25mm tongue, groove and v-jointed timber, ledged and braced. Fully lined top and bottom with exterior grade plywood to give an overall thickness of 50mm. Furnished with galvanised hook & band hinges, kick-over latch, brenton bolt, cabin hooks and anti-chew strip.

WINDOWS
2-Pane hopper window (acrylic) 780mm wide x 1040mm high.

ROOF
Felt shingle roof. Multiple trusses at 600mm centres with cross bracing.

RAINWATER DISPOSAL
100mm half round black guttering with 50mm round down pipes to discharge to surface water drains (fitted by others in accordance with Local Regulations).

PROPOSED STABLES & TACK ROOM
@ 694 CHORLEY ROAD, BLACKROD,
BOLTON, LANCASHIRE, BL5 3NL



SUSAN DAVIES CLIENT:
JUNE 2020 DATE:
REV NO. 1/100 - A3 SCALE
DAVIES, S JUNE-20 DRAWING NO.
KIM JACKMAN DRAWN BY:

PALLINGHURST FARM, KNOWLE LANE,
RUDGWICK, WEST SUSSEX, RH12 3BQ
TEL: 01403 823836 FAX: 01403 823595
Website: www.primestables.co.uk
E-mail: info@primestables.co.uk