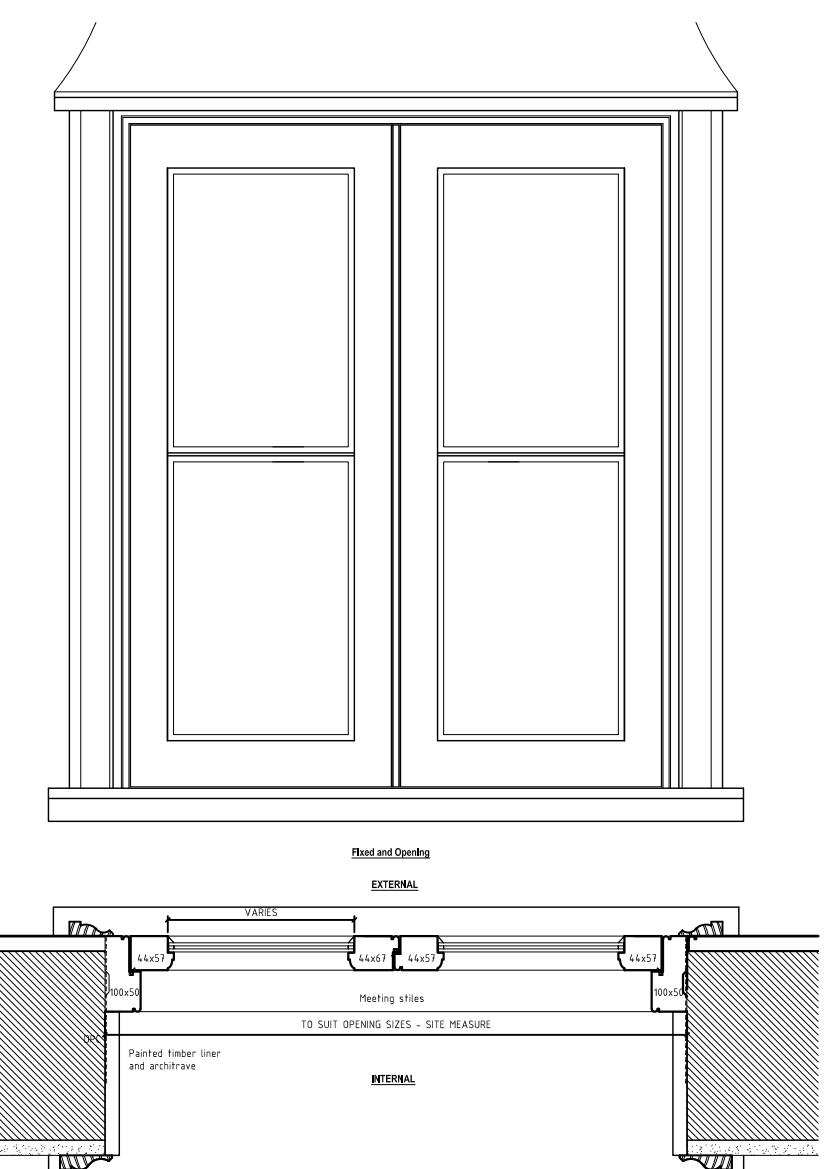
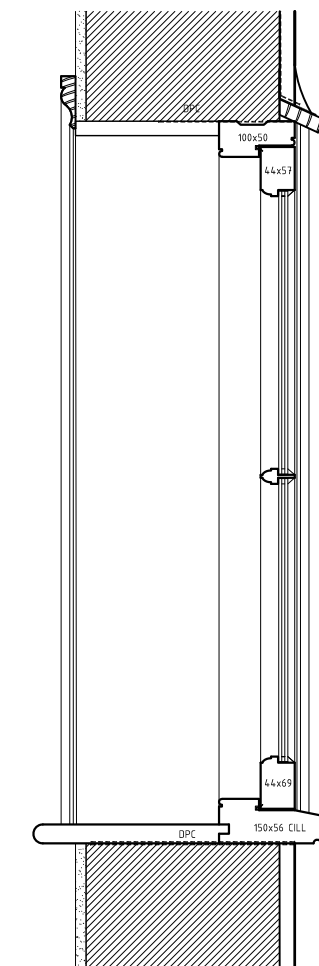
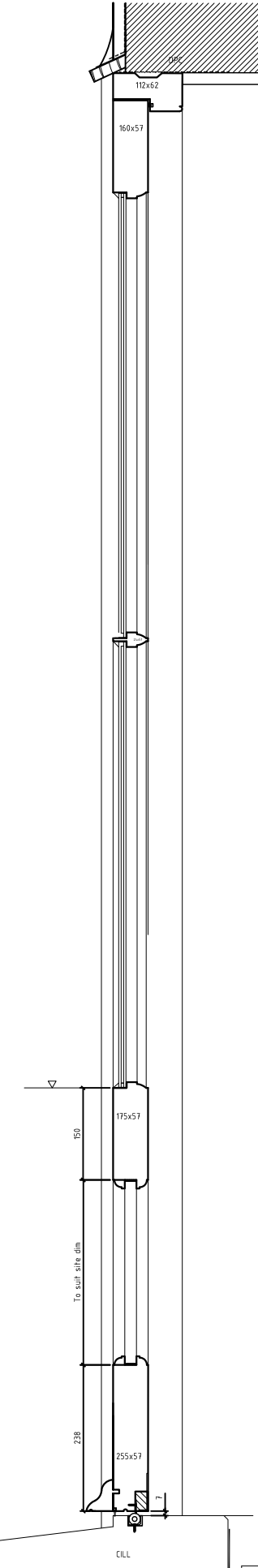
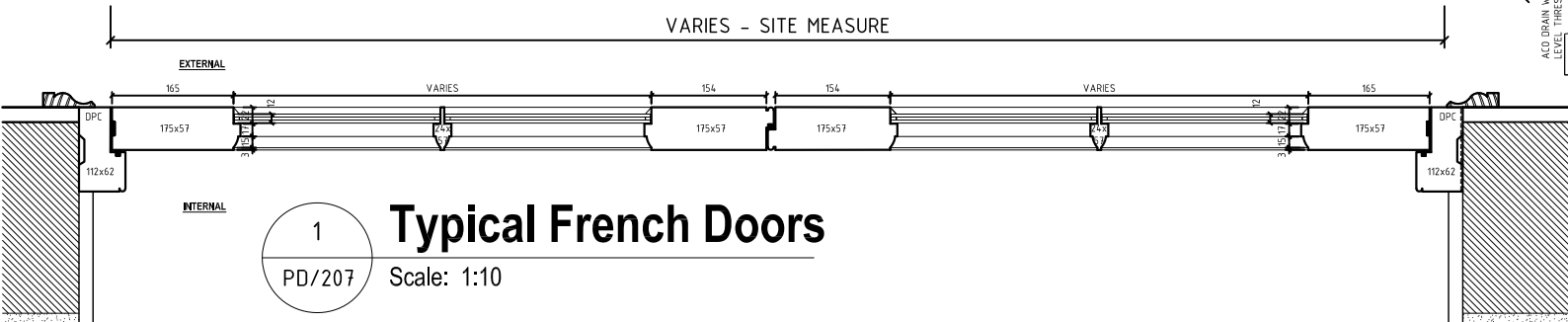
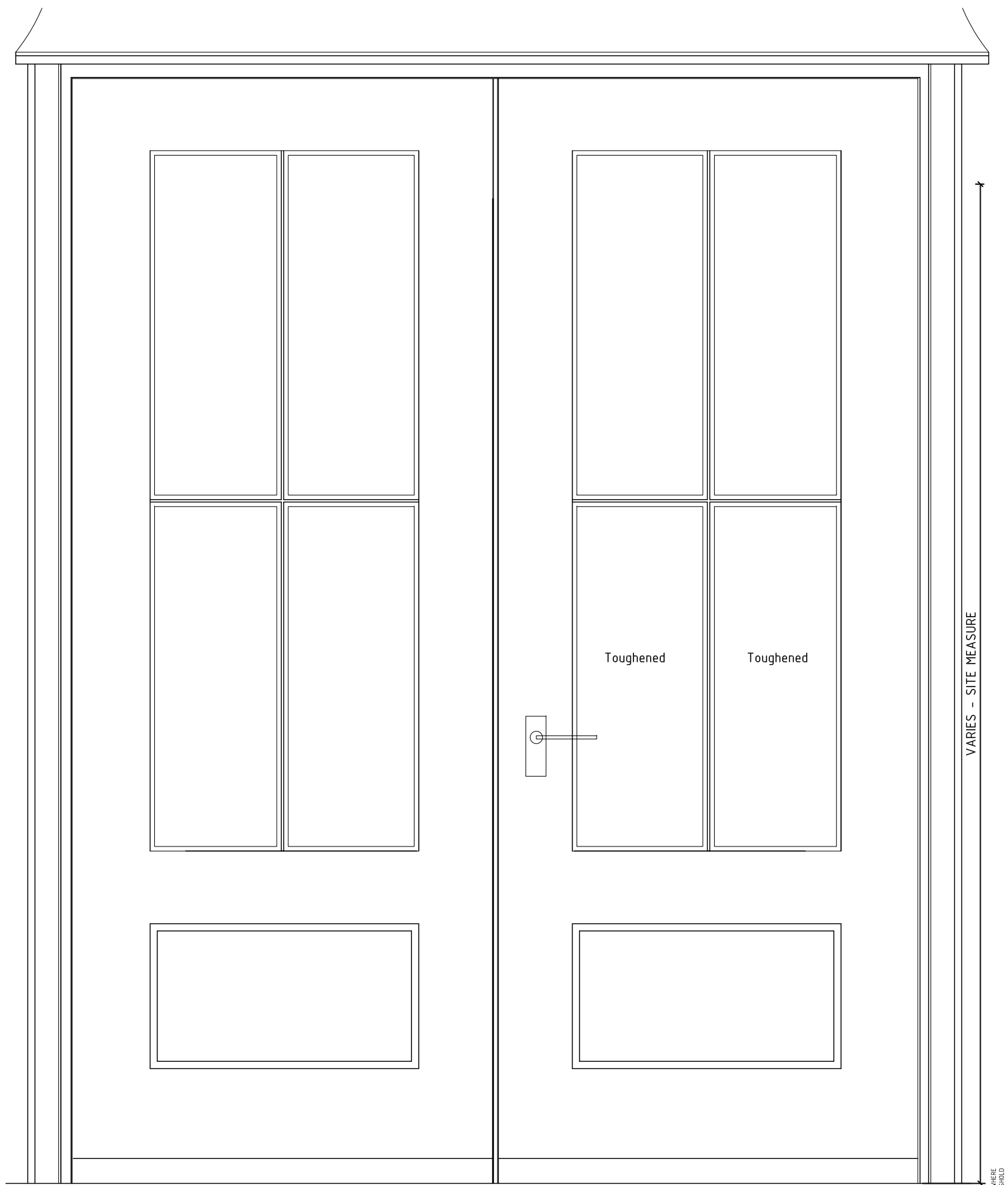


- NOTES  
 1. THIS IS A PLANNING DRAWING NOT TO BE USED FOR CONSTRUCTION  
 2. ANY DISCREPANCIES TO BE BROUGHT TO THE ATTENTION OF THE ARCHITECT



**2 Typical Casement**  
 PD/207 Scale: 1:10



**WINDOWS AND DOORS**  
 Window height and width will differ for each opening. Site dimensions to be taken prior to manufacture. All new casement windows and doors are to be manufactured in Sapele, primed and painted internally and externally. Colour to be off white RAL 9001 off white wood paint.  
 Windows to be 14mm narrow double glazed units. 4mm clear float outer pane, 6mm gas filled cavity with aluminium white spacer bar, 4mm Low E clear float glass inner pane  
 To achieve a u-value of 1.4W/m<sup>2</sup>K  
 Any glass below 800mm from floor to be toughened.

PROPOSED WINDOWS AND DOORS (SOUTH WEST COTTAGE)  
 for OLD HOUSE PRODUCTIONS  
 BRIDGE GREEN  
 DUDDENHOE END  
 SAFFRON WALDEN  
 CB11 4XA

REV	BRIEF DETAILS	DATE
NO.	2302 / PD / 207	REV
SCALE	1:10 @ A3	CHECKED
DATE	FEB '24	ST
		DRAWN
		KB

**KAY PILSBURY THOMAS ARCHITECTS**  
 TEL 01799 599208 FAX: 01799 599965  
 www.kpt.co.uk info@kpt.co.uk  
 HONEYLANDS, RADWINTER, SAFFRON WALDEN, ESSEX, CB10 2TJ

© The copyright of this drawing belongs to Kay Pilsbury Thomas