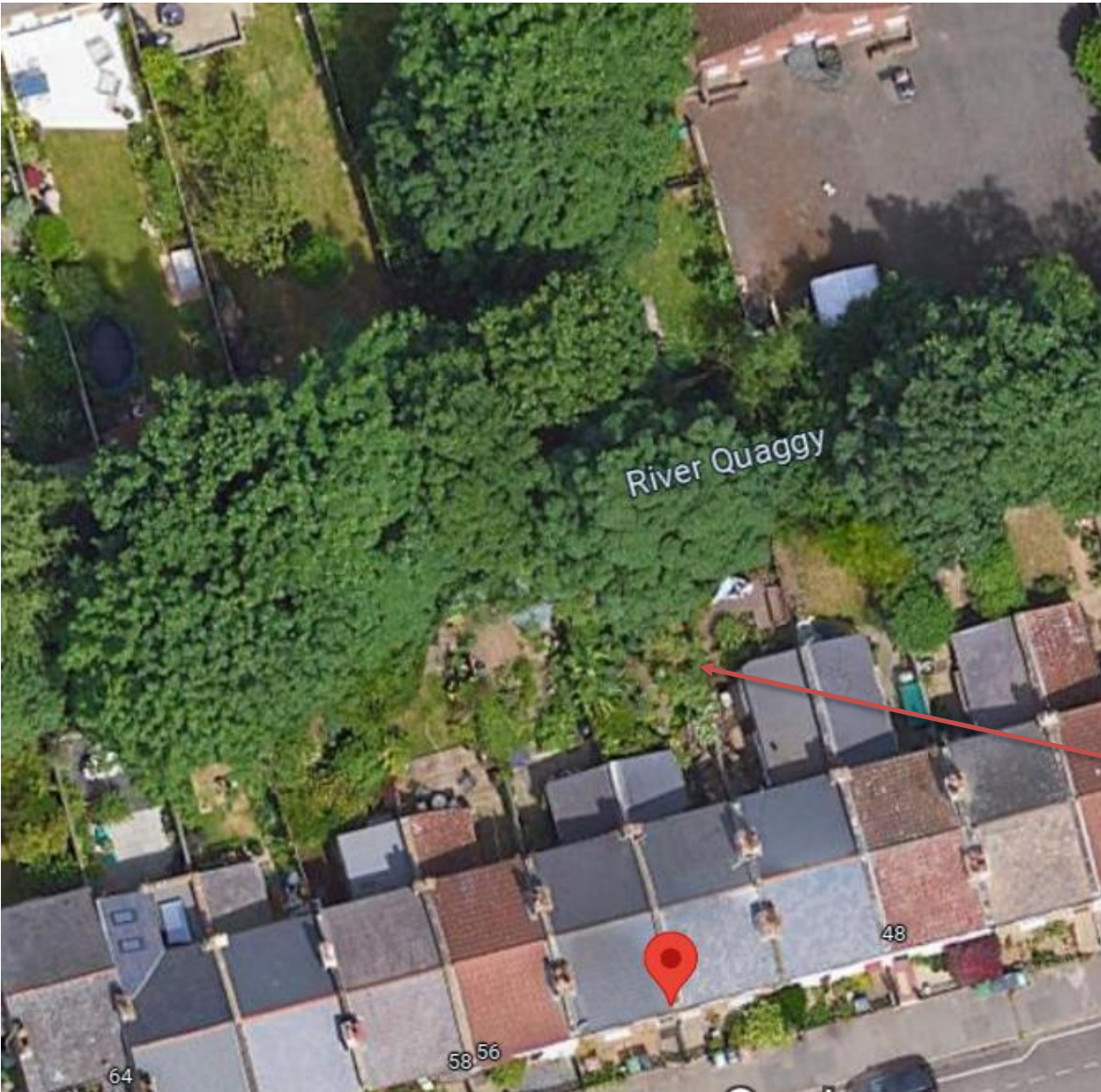


Sketch Plan
52, Brightfield Road, London, SE12 8QF



Statement of work:

T1 Cordyline - Rear RHB: To cut 1 stem leaning towards the neighbouring property leaving a stump @ approximately 1 metre high and removing deadwood from the remaining stem. Please see annotated photo. Height is currently 5 metres being reduced to 4 metres and the spread remaining at 2.5 metres. Reasons for work – General Maintenance

