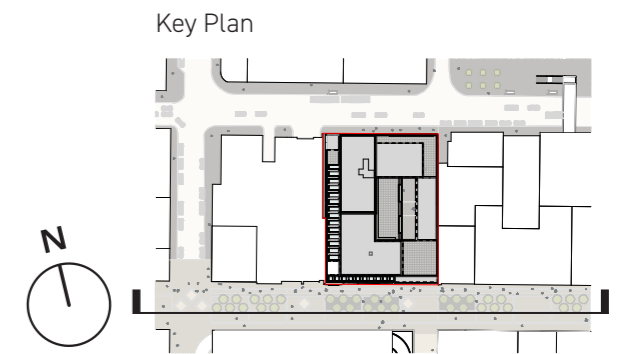


5.7 Appearance

Sauchiehall Street - Contextual Elevation



----- outline of Cambridge Street apart-hotel scheme (minded to grant)



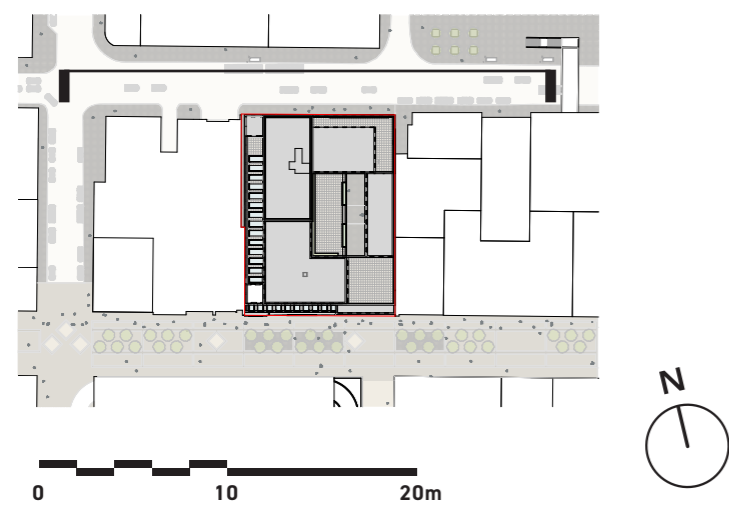
5.7 Appearance

Renfrew Street

Indicative materials:

- 1. GRC profiled horizontal band (every three storeys)
- 2. GRC square profile column cladding
- 3. Aluminium perforated panel to window head
- 4. Window with DGU - floor-to-ceiling top-hung casement
- 5. GRC single skin profiled cladding panel
- 6. Curtain walling to ground floor
- 7. Glazed balustrade to roof terraces
- 8. Aluminium external glazed door for roof access
- 9. GRC profiled horizontal band along boundary edge
- 10. GRC square profile columns
- 11. Stainless steel cables for climbing plants

Key Plan

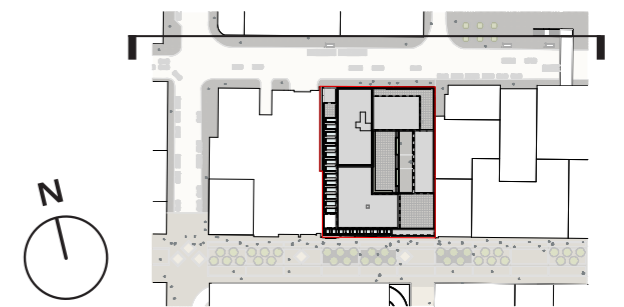


5.7 Appearance

Renfrew Street - Contextual Elevation



----- outline of Cambridge Street apart-hotel scheme (minded to grant)



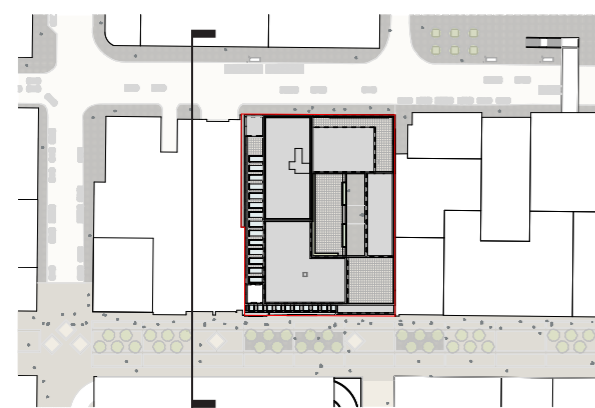
5.7 Appearance

West Elevation

Indicative materials:

1. GRC profiled horizontal band (every three storeys)
2. GRC square profile column cladding
3. Aluminium perforated panel to window head
4. Window with DGU - floor-to-ceiling top-hung casement
5. GRC single skin profiled cladding panel
6. Curtain Walling to ground floor
7. Glazed balustrade to roof terraces
8. Aluminium external glazed door for roof access
9. GRC profiled horizontal band along boundary edge
10. GRC square profile columns
11. Stainless steel cables for climbing plants

Key Plan



0 10 20m

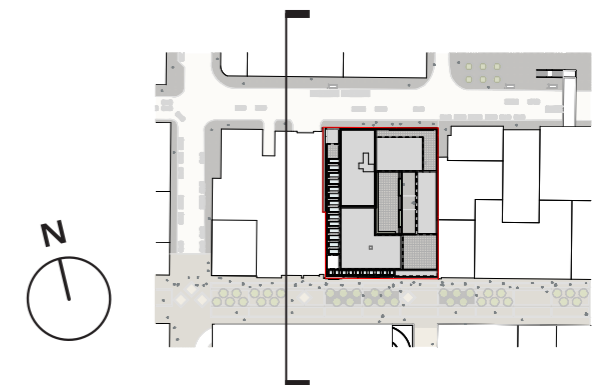


5.7 Appearance

West Elevation - Contextual Elevation



01/24



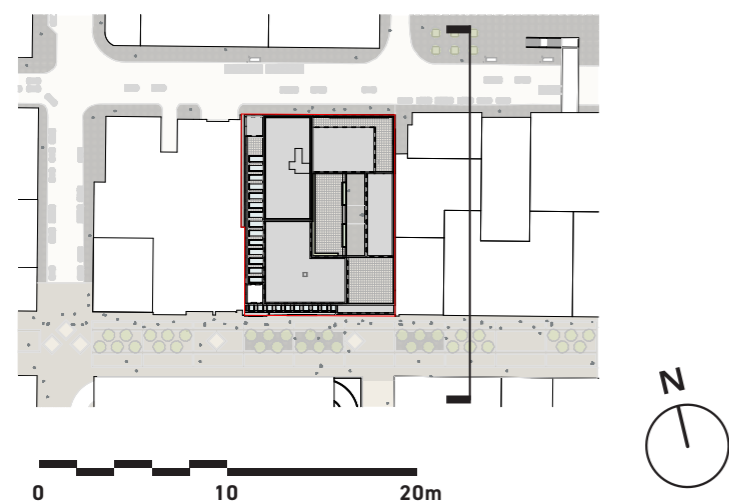
5.7 Appearance

East Elevation

Indicative materials:

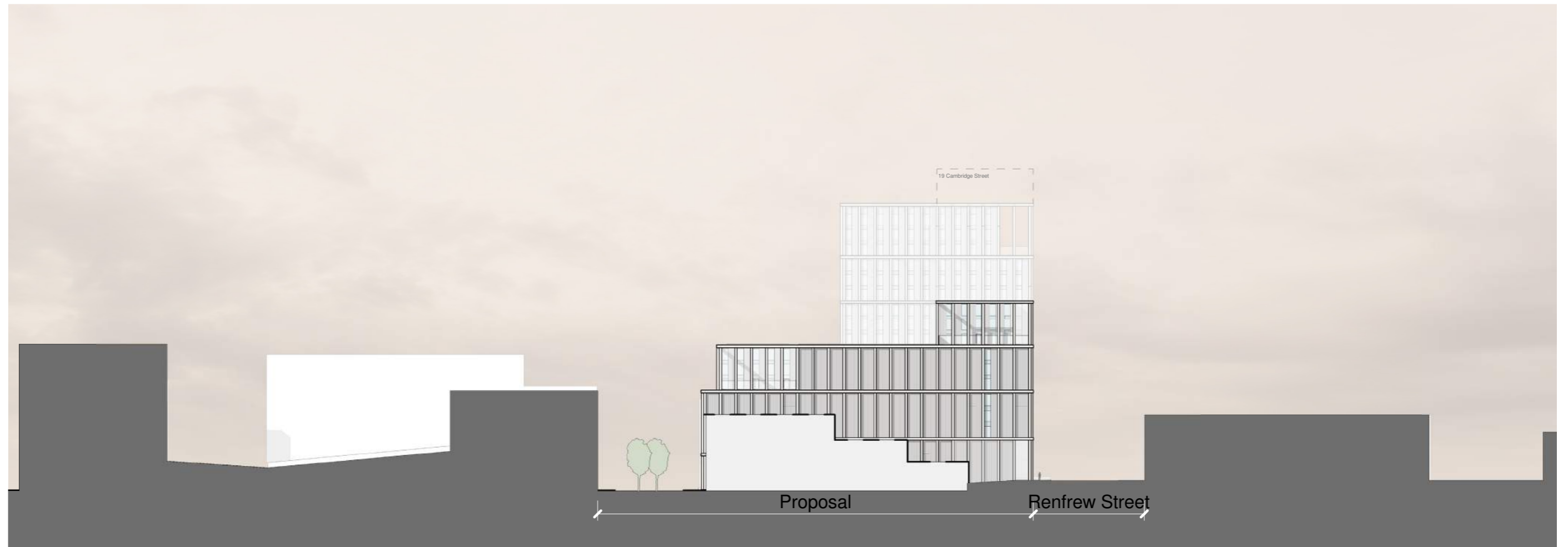
1. GRC profiled horizontal band (every three storeys)
2. GRC square profile column cladding
3. Aluminium perforated panel to window head
4. Window with DGU - floor-to-ceiling top-hung casement
5. GRC single skin profiled cladding panel
6. Curtain Walling to ground floor
7. Glazed balustrade to roof terraces
8. Aluminium external glazed door for roof access
9. GRC profiled horizontal band along boundary edge
10. GRC square profile columns
11. Stainless steel cables for climbing plants

Key Plan

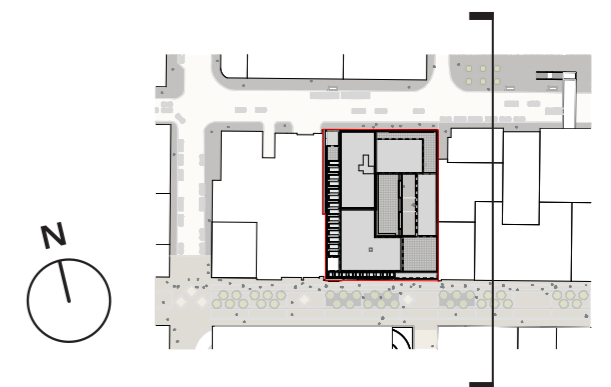


5.7 Appearance

East Elevation - Contextual Elevation



0 20 40m



5.7 Appearance

5.7.7 Bay Elevations

Sauchiehall Street

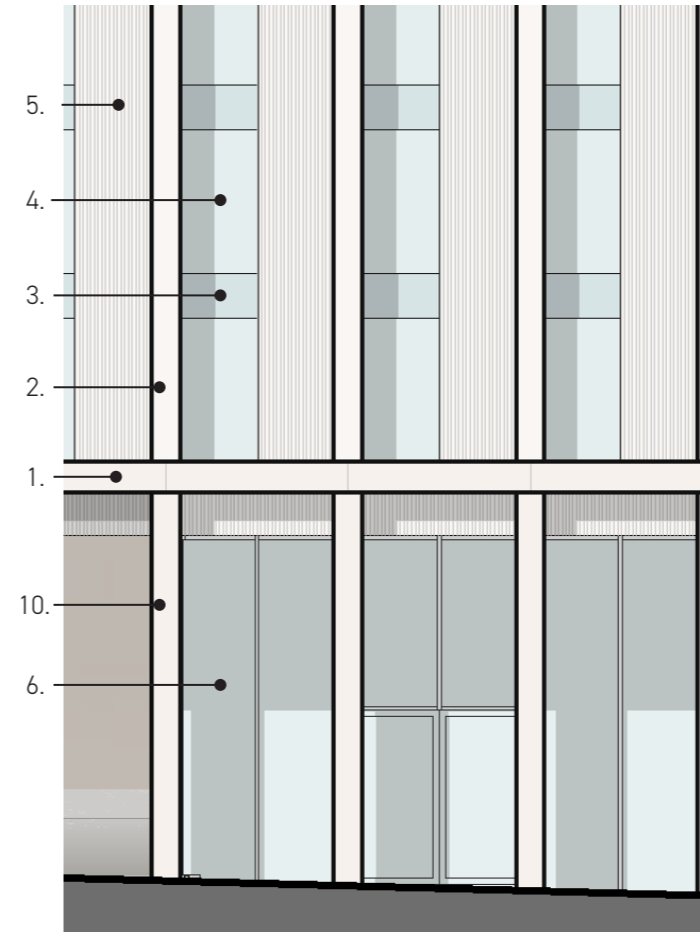
Key Elevation



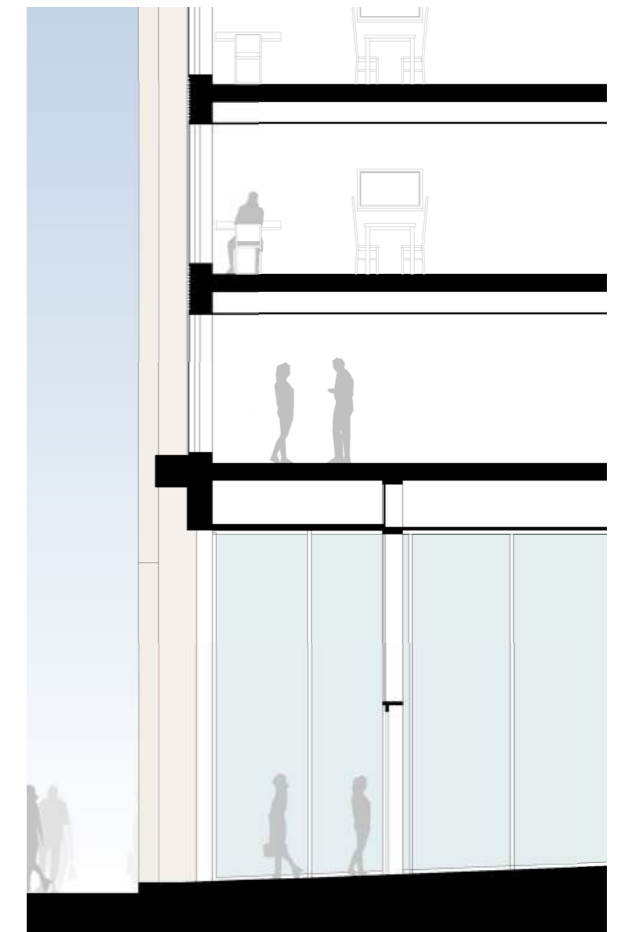
Perspective Visualisation



Elevation



Section

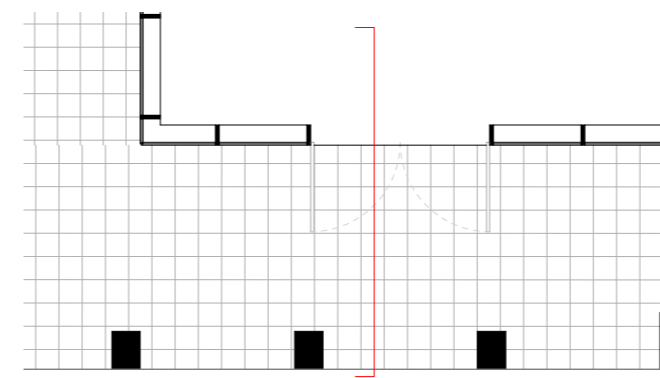


Indicative materials:

1. GRC profiled horizontal band (every three storeys)
2. GRC square profile column cladding
3. Aluminium perforated panel to window head
4. Window with DGU - floor-to-ceiling top-hung casement
5. GRC single skin profiled cladding panel
6. Curtain Walling to ground floor
7. Glazed balustrade to roof terraces
8. Aluminium external glazed door for roof access
9. GRC profiled horizontal band along boundary edge
10. GRC square profile columns
11. Stainless steel cables for climbing plants



Plan



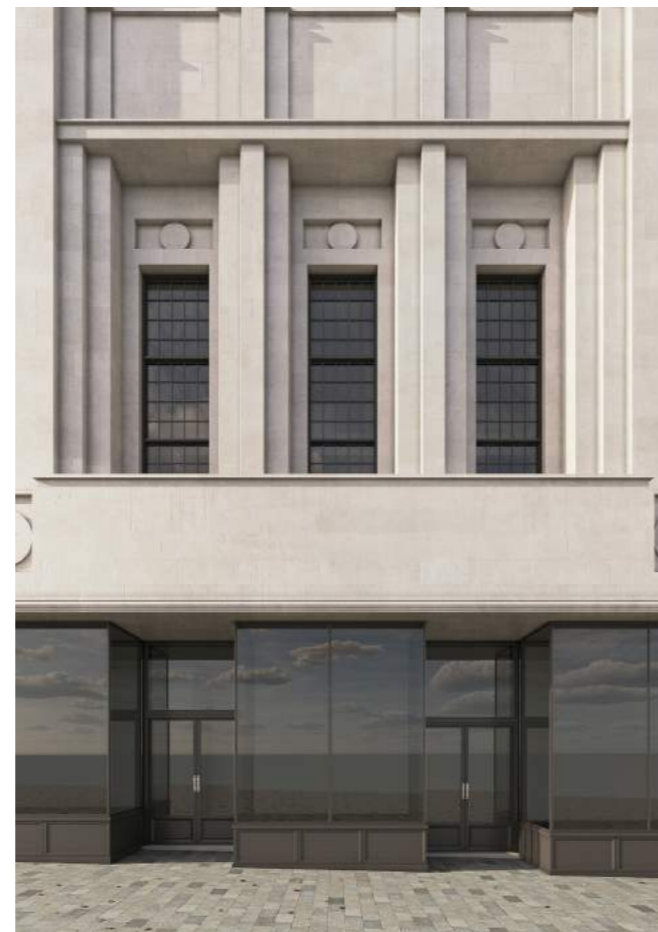
5.7 Appearance

Sauchiehall Street

Key Elevation



Perspective Visualisation

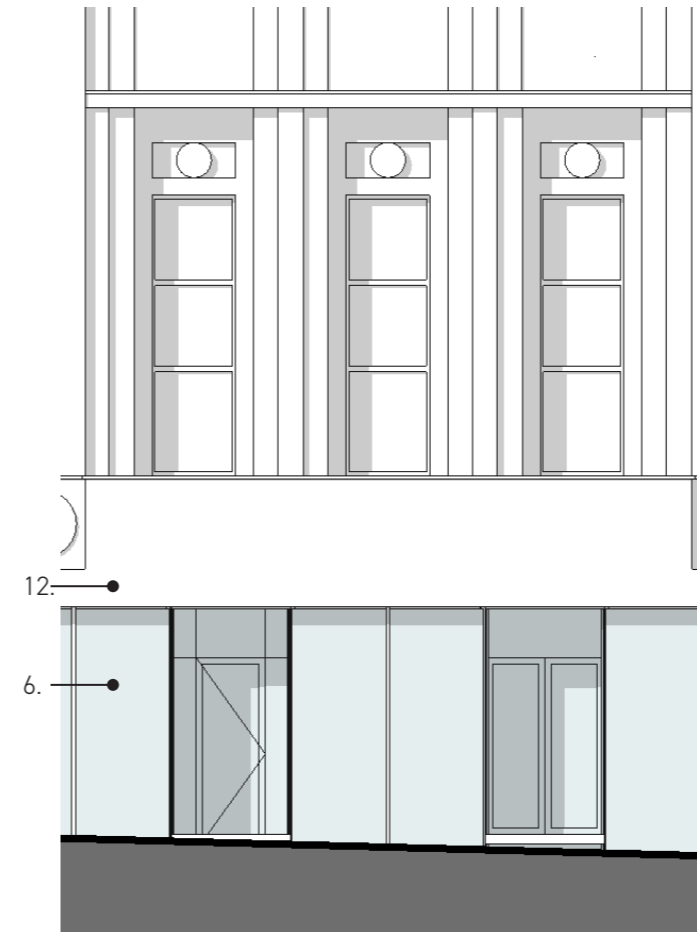


Indicative materials:

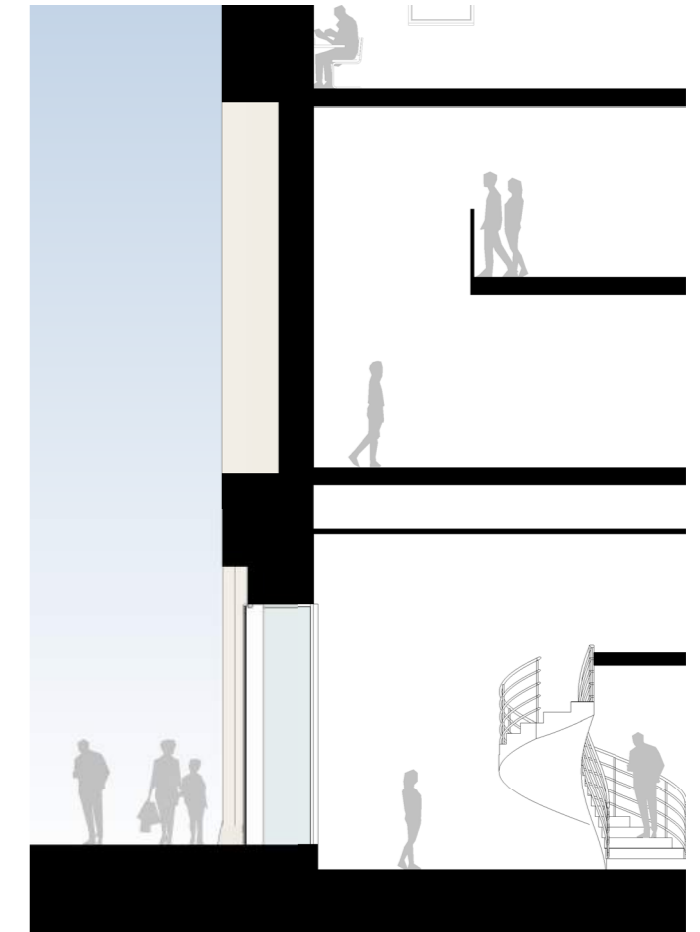
1. GRC profiled horizontal band (every three storeys)
2. GRC square profile column cladding
3. Aluminium perforated panel to window head
4. Window with DGU - floor-to-ceiling top-hung casement
5. GRC single skin profiled cladding panel
6. Reinstated shop-front window bays and doors
7. Glazed balustrade to roof terraces
8. Aluminium external glazed door for roof access
9. GRC profiled horizontal band along boundary edge
10. GRC square profile columns
11. Stainless steel cables for climbing plants
12. Reinstated and repaired original facade



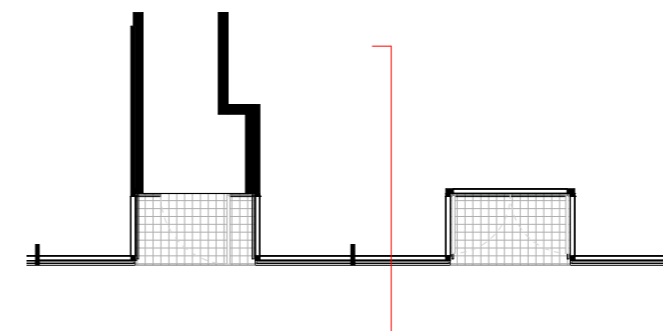
Elevation



Section



Plan



5.7 Appearance

Sauchiehall Street

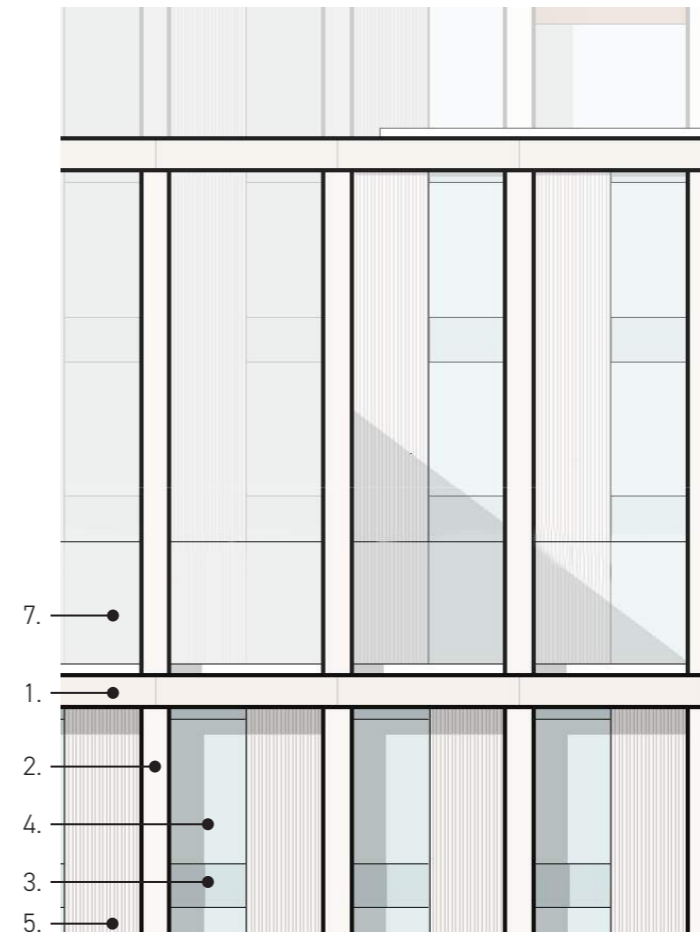
Key Elevation



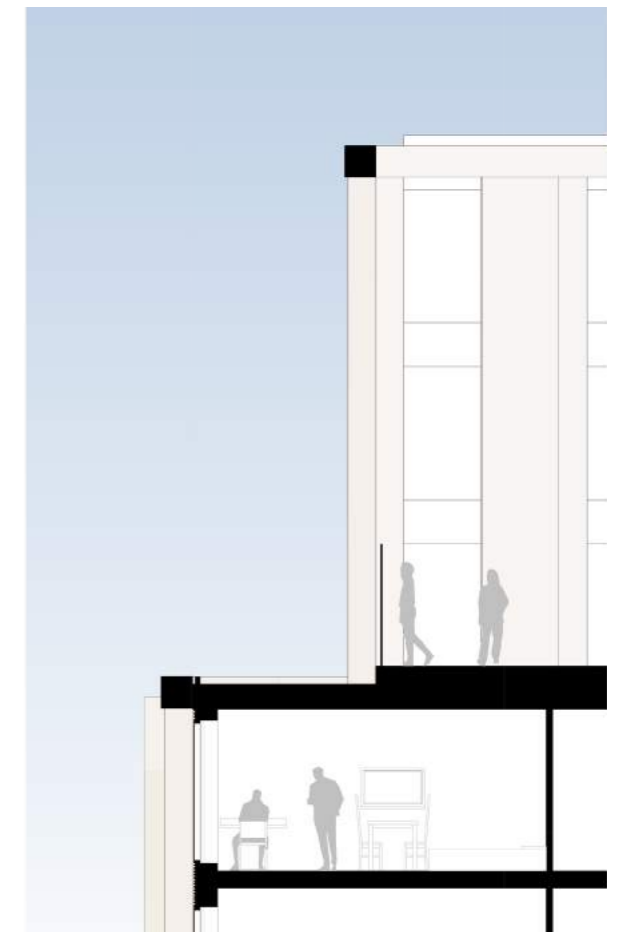
Perspective Visualisation



Elevation



Section

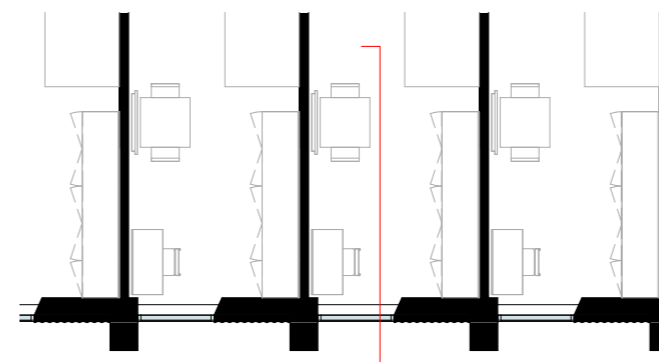


Indicative materials:

1. GRC profiled horizontal band (every three storeys)
2. GRC square profile column cladding
3. Aluminium perforated panel to window head
4. Window with DGU - floor-to-ceiling top-hung casement
5. GRC single skin profiled cladding panel
6. Curtain Walling to ground floor
7. Glazed balustrade to roof terraces
8. Aluminium external glazed door for roof access
9. GRC profiled horizontal band along boundary edge
10. GRC square profile columns
11. Stainless steel cables for climbing plants



Plan



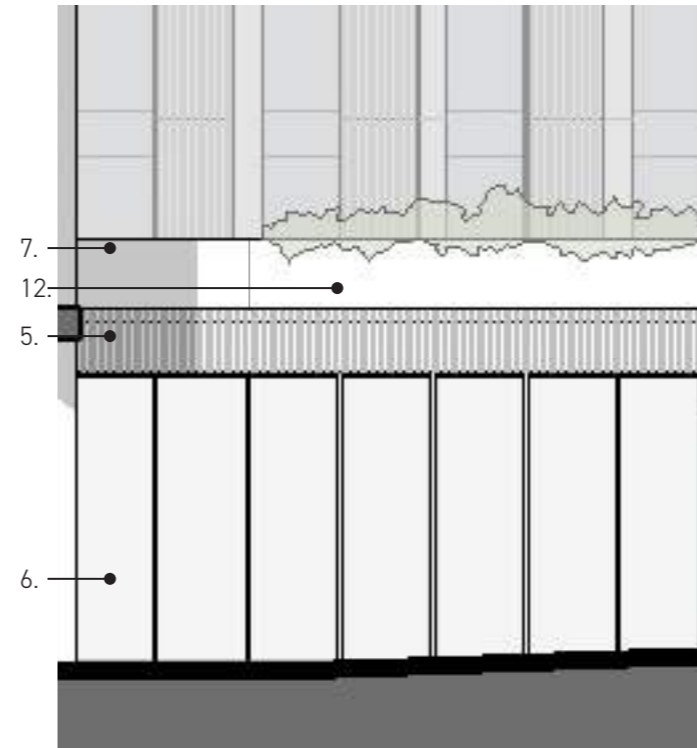
5.7 Appearance

'Wellington Arcade'

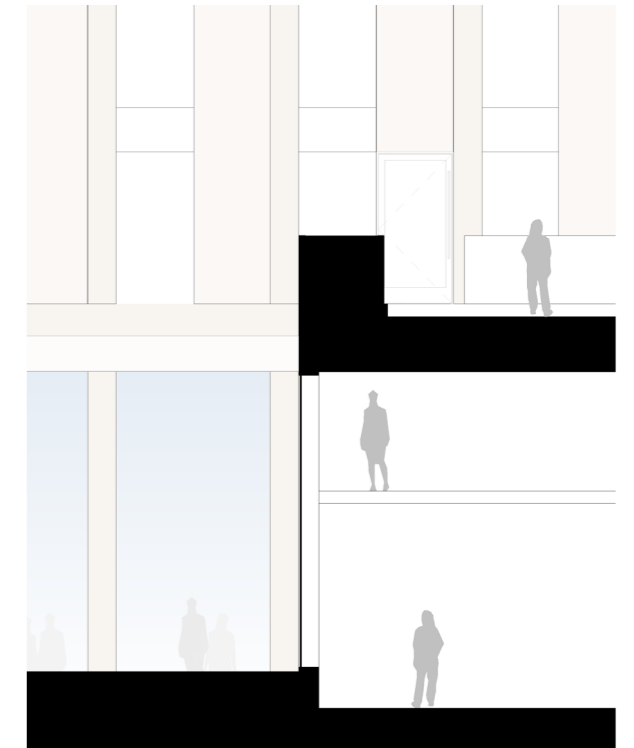
Perspective Visualisation



Elevation



Section

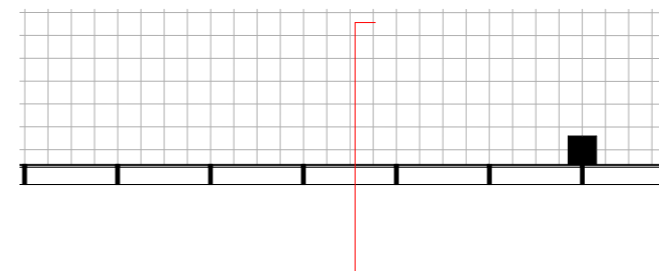


Indicative materials:

1. GRC profiled horizontal band (every three storeys)
2. GRC square profile column cladding
3. Aluminium perforated panel to window head
4. Window with DGU - floor-to-ceiling top-hung casement
5. GRC single skin profiled cladding panel
6. Curtain Walling to ground floor
7. Glazed balustrade to roof terraces
8. Aluminium external glazed door for roof access
9. GRC profiled horizontal band along boundary edge
10. GRC square profile columns
11. Stainless steel cables for climbing plants
12. Metal planter with perforated pattern



Plan



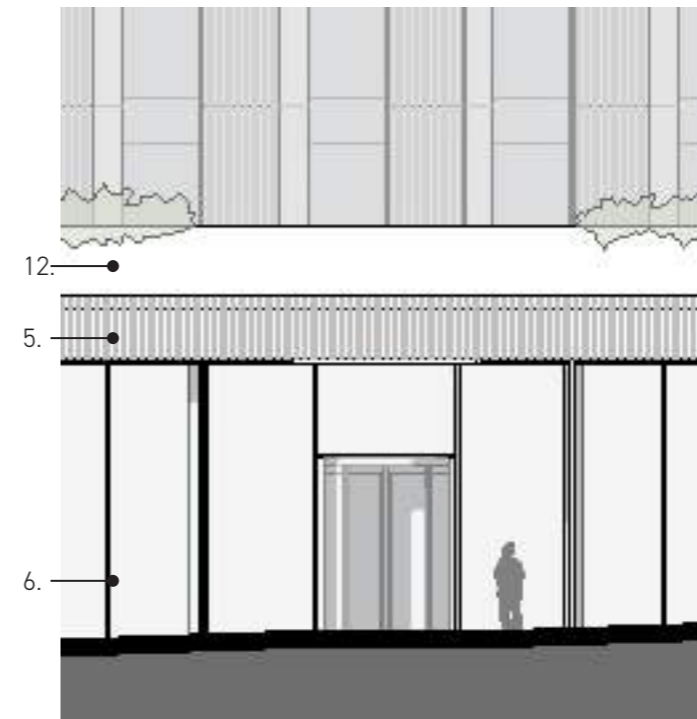
5.7 Appearance

'Wellington Arcade'

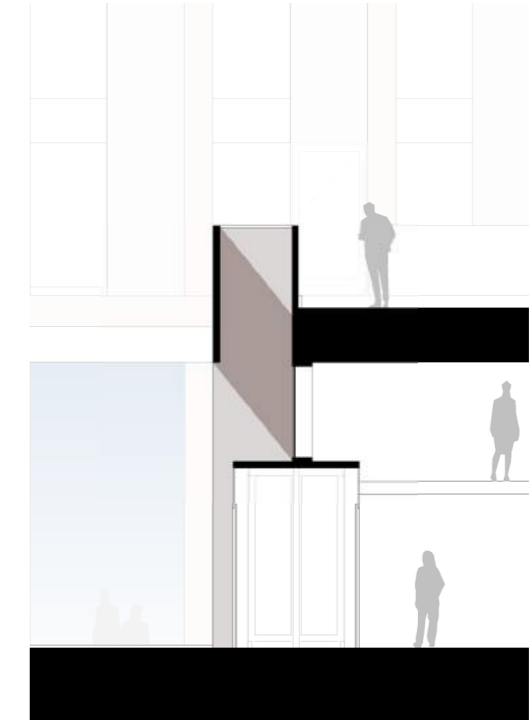
Perspective Visualisation



Elevation



Section

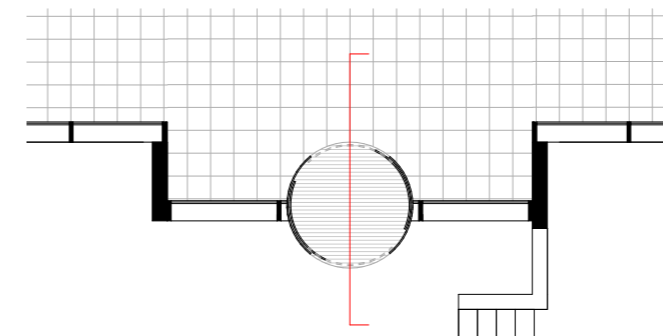


Indicative materials:

1. GRC profiled horizontal band (every three storeys)
2. GRC square profile column cladding
3. Aluminium perforated panel to window head
4. Window with DGU - floor-to-ceiling top-hung casement
5. GRC single skin profiled cladding panel
6. Curtain Walling to ground floor
7. Glazed balustrade to roof terraces
8. Aluminium external glazed door for roof access
9. GRC profiled horizontal band along boundary edge
10. GRC square profile columns
11. Stainless steel cables for climbing plants
12. Metal planter with perforated pattern



Plan



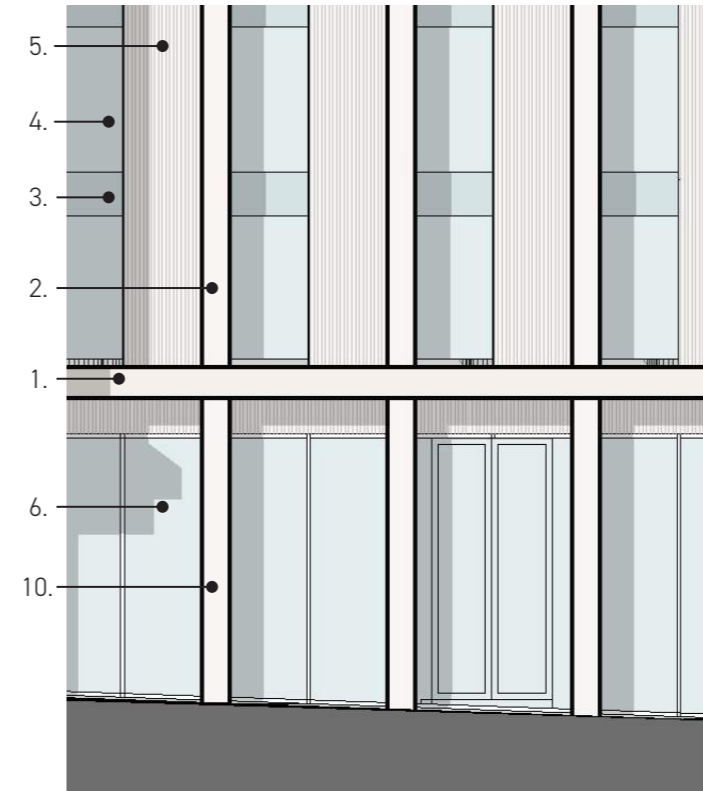
5.7 Appearance

'Wellington Arcade'

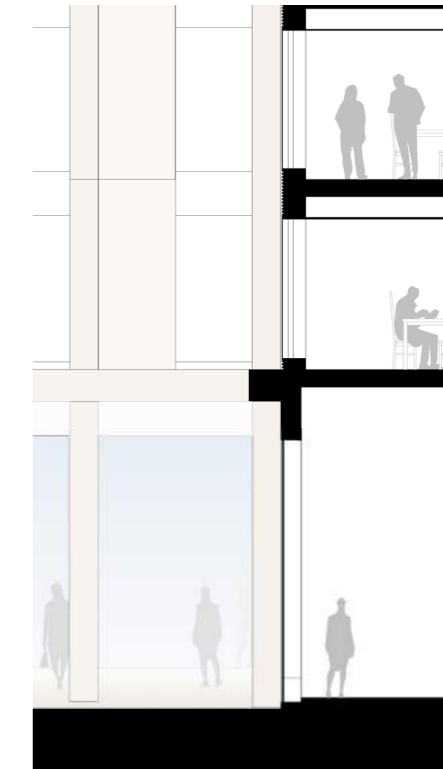
Perspective Visualisation



Elevation



Section

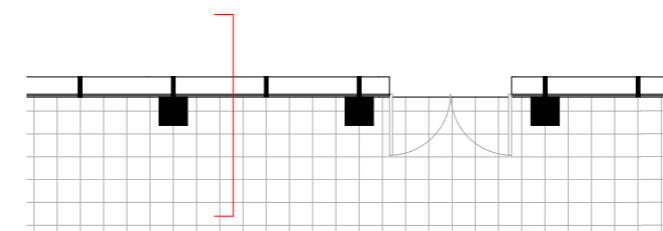


Indicative materials:

1. GRC profiled horizontal band (every three storeys)
2. GRC square profile column cladding
3. Aluminium perforated panel to window head
4. Window with DGU - floor-to-ceiling top-hung casement
5. GRC single skin profiled cladding panel
6. Curtain Walling to ground floor
7. Glazed balustrade to roof terraces
8. Aluminium external glazed door for roof access
9. GRC profiled horizontal band along boundary edge
10. GRC square profile columns
11. Stainless steel cables for climbing plants



Plan



5.7 Appearance

Renfrew Street

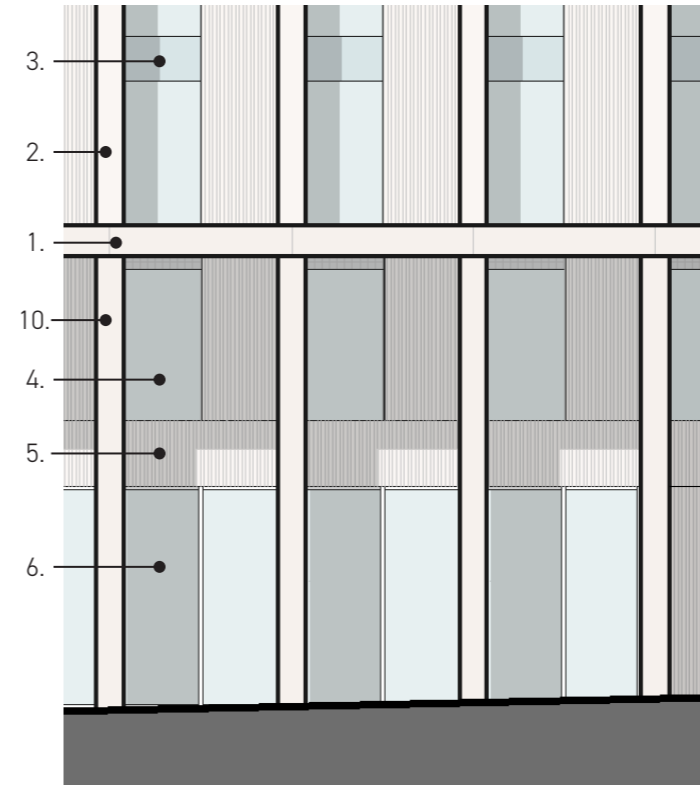
Key Elevation



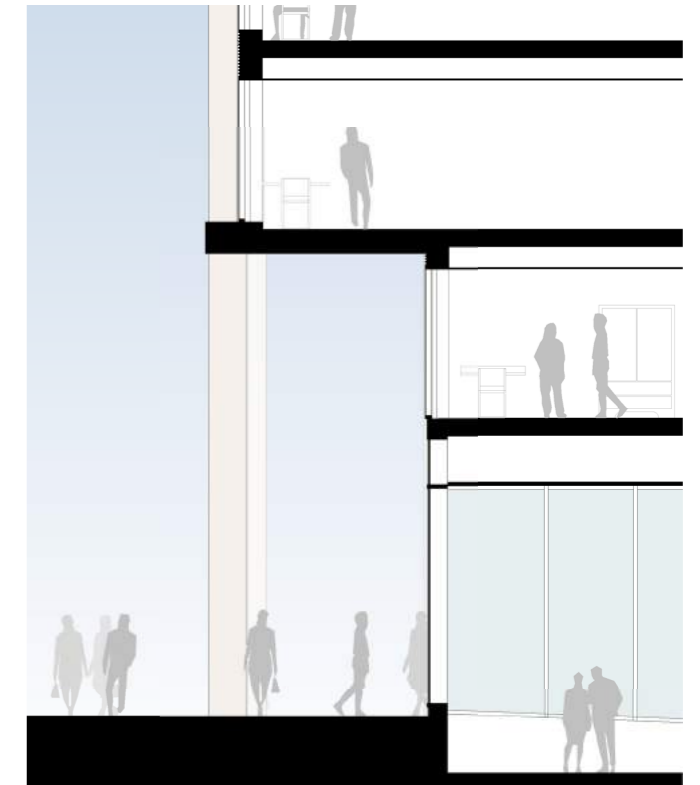
Perspective Visualisation



Elevation



Section

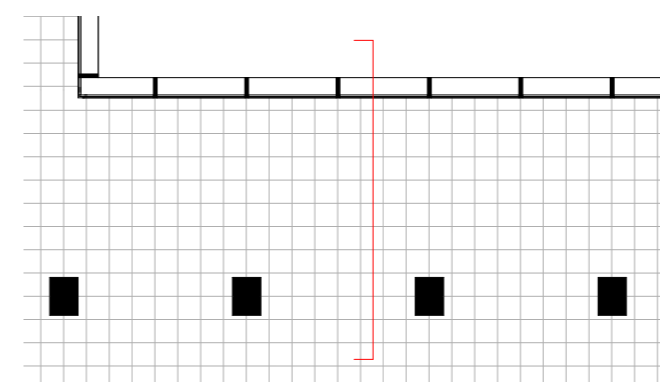


Indicative materials:

1. GRC profiled horizontal band (every three storeys)
2. GRC square profile column cladding
3. Aluminium perforated panel to window head
4. Window with DGU - floor-to-ceiling top-hung casement
5. GRC single skin profiled cladding panel
6. Curtain Walling to ground floor
7. Glazed balustrade to roof terraces
8. Aluminium external glazed door for roof access
9. GRC profiled horizontal band along boundary edge
10. GRC square profile columns
11. Stainless steel cables for climbing plants



Plan



5.7 Appearance

Renfrew Street

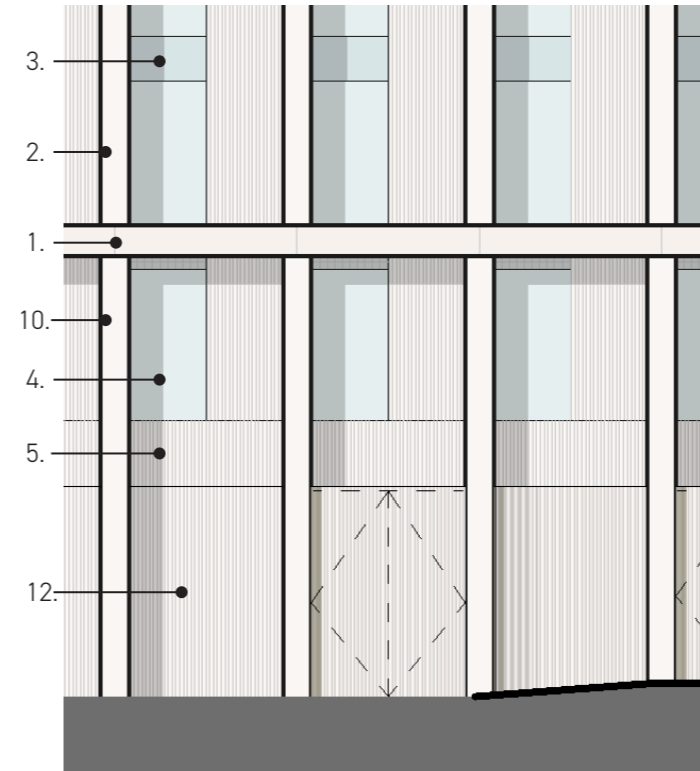
Key Elevation



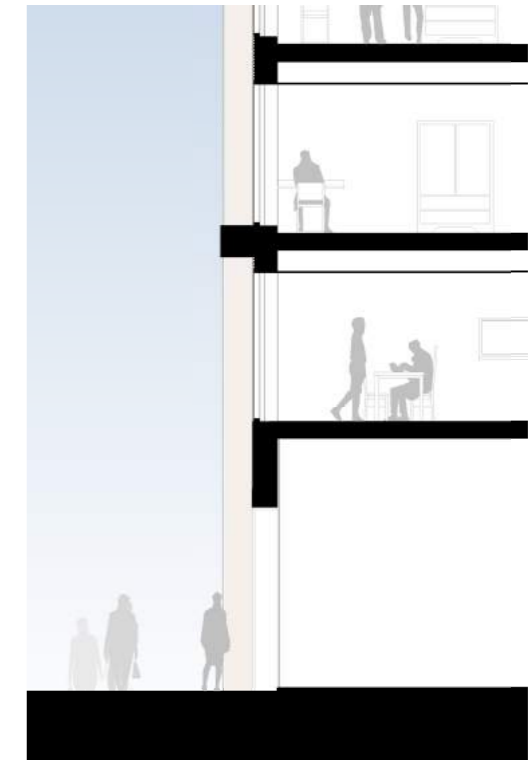
Perspective Visualisation



Elevation



Section

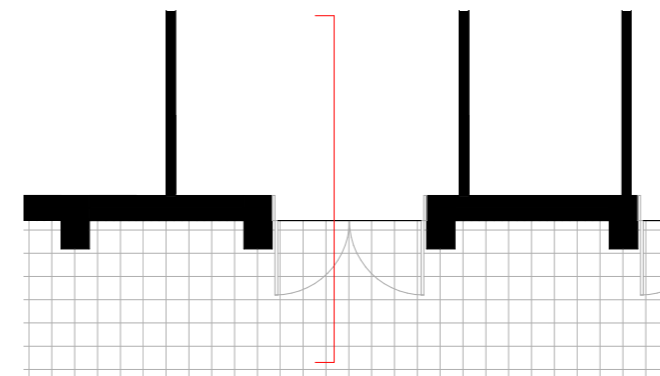


Indicative materials:

1. GRC profiled horizontal band (every three storeys)
2. GRC square profile column cladding
3. Aluminium perforated panel to window head
4. Window with DGU - floor-to-ceiling top-hung casement
5. GRC single skin profiled cladding panel
6. Curtain Walling to ground floor
7. Glazed balustrade to roof terraces
8. Aluminium external glazed door for roof access
9. GRC profiled horizontal band along boundary edge
10. GRC square profile columns
11. Stainless steel cables for climbing plants
12. Pleated profile to match incorporating vertical vents



Plan



5.7 Appearance

Renfrew Street

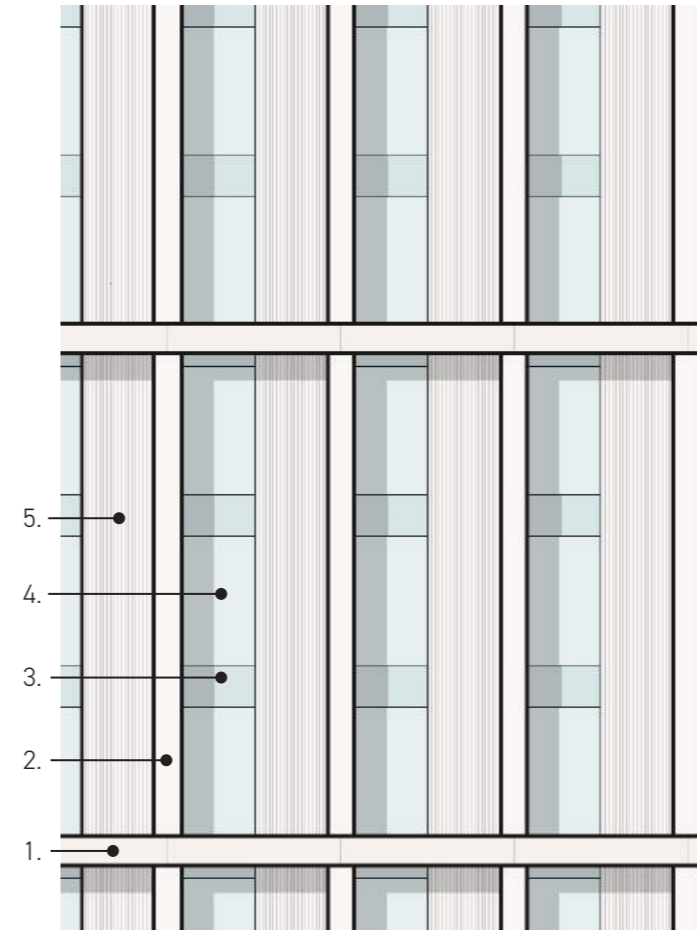
Key Elevation



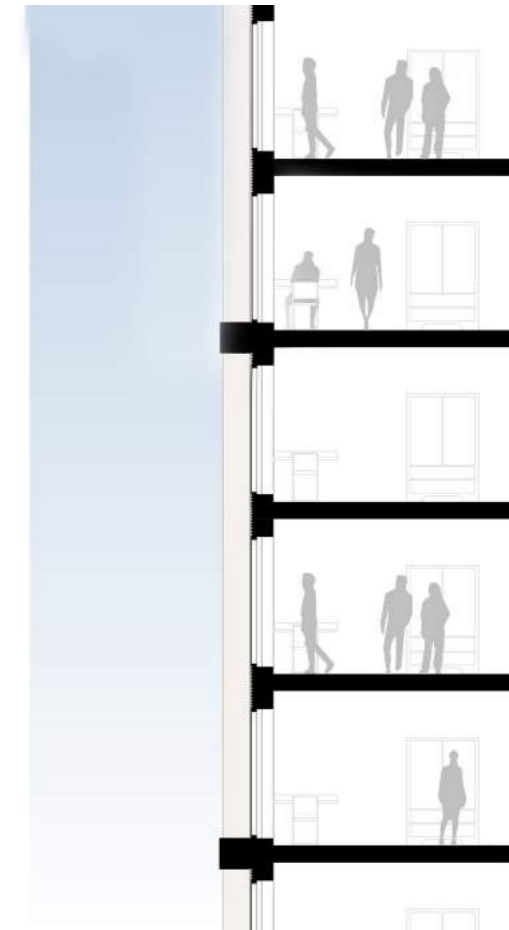
Perspective Visualisation



Elevation



Section

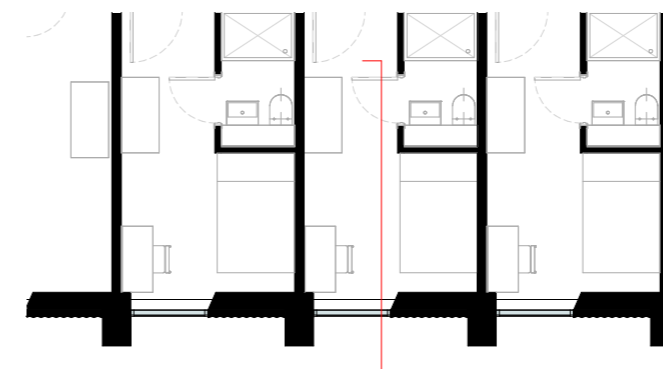


Indicative materials:

1. GRC profiled horizontal band (every three storeys)
2. GRC square profile column cladding
3. Aluminium perforated panel to window head
4. Window with DGU - floor-to-ceiling top-hung casement
5. GRC single skin profiled cladding panel
6. Curtain Walling to ground floor
7. Glazed balustrade to roof terraces
8. Aluminium external glazed door for roof access
9. GRC profiled horizontal band along boundary edge
10. GRC square profile columns
11. Stainless steel cables for climbing plants



Plan



5.7 Appearance

Renfrew Street

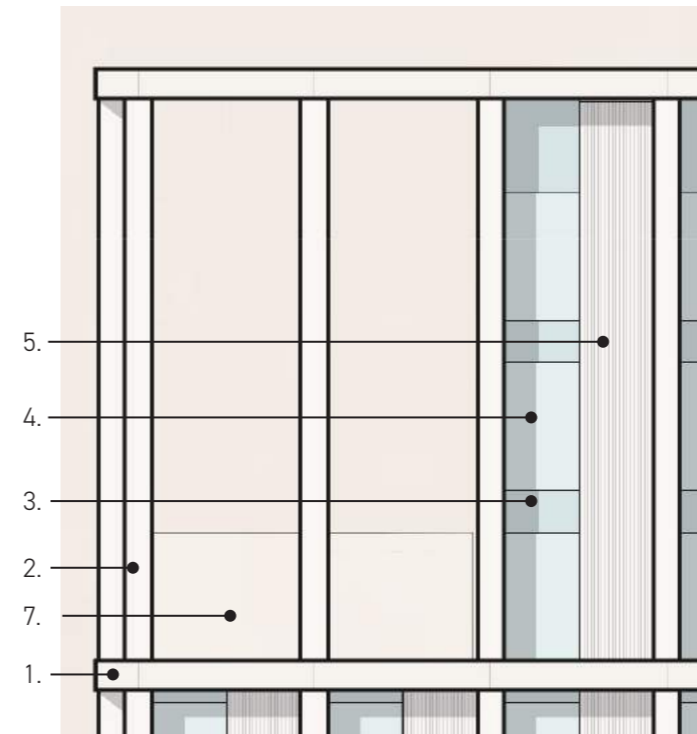
Key Elevation



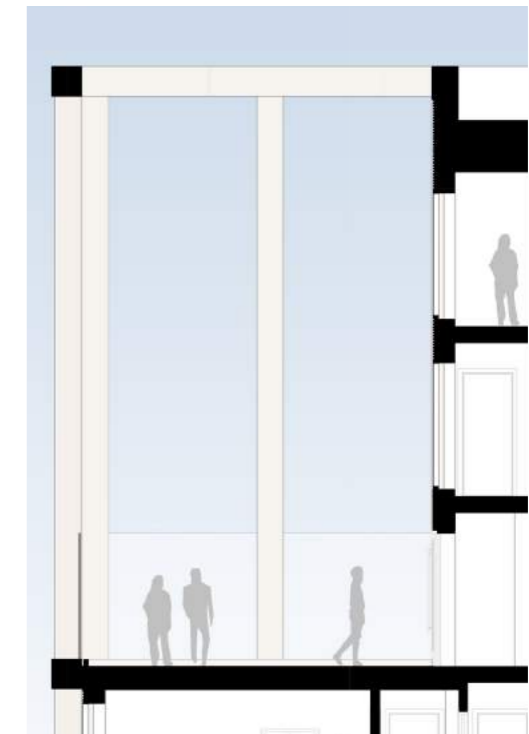
Perspective Visualisation



Elevation



Section

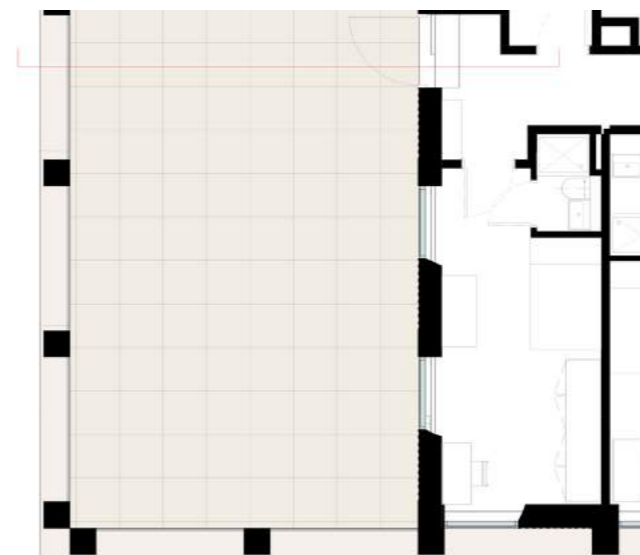


Indicative materials:

1. GRC profiled horizontal band (every three storeys)
2. GRC square profile column cladding
3. Aluminium perforated panel to window head
4. Window with DGU - floor-to-ceiling top-hung casement
5. GRC single skin profiled cladding panel
6. Curtain Walling to ground floor
7. Glazed balustrade to roof terraces
8. Aluminium external glazed door for roof access
9. GRC profiled horizontal band along boundary edge
10. GRC square profile columns
11. Stainless steel cables for climbing plants



Plan



5.7 Appearance

5.7.8 Visualisations

Sauchiehall Street looking west.



5.7 Appearance



Wellington Street looking north.