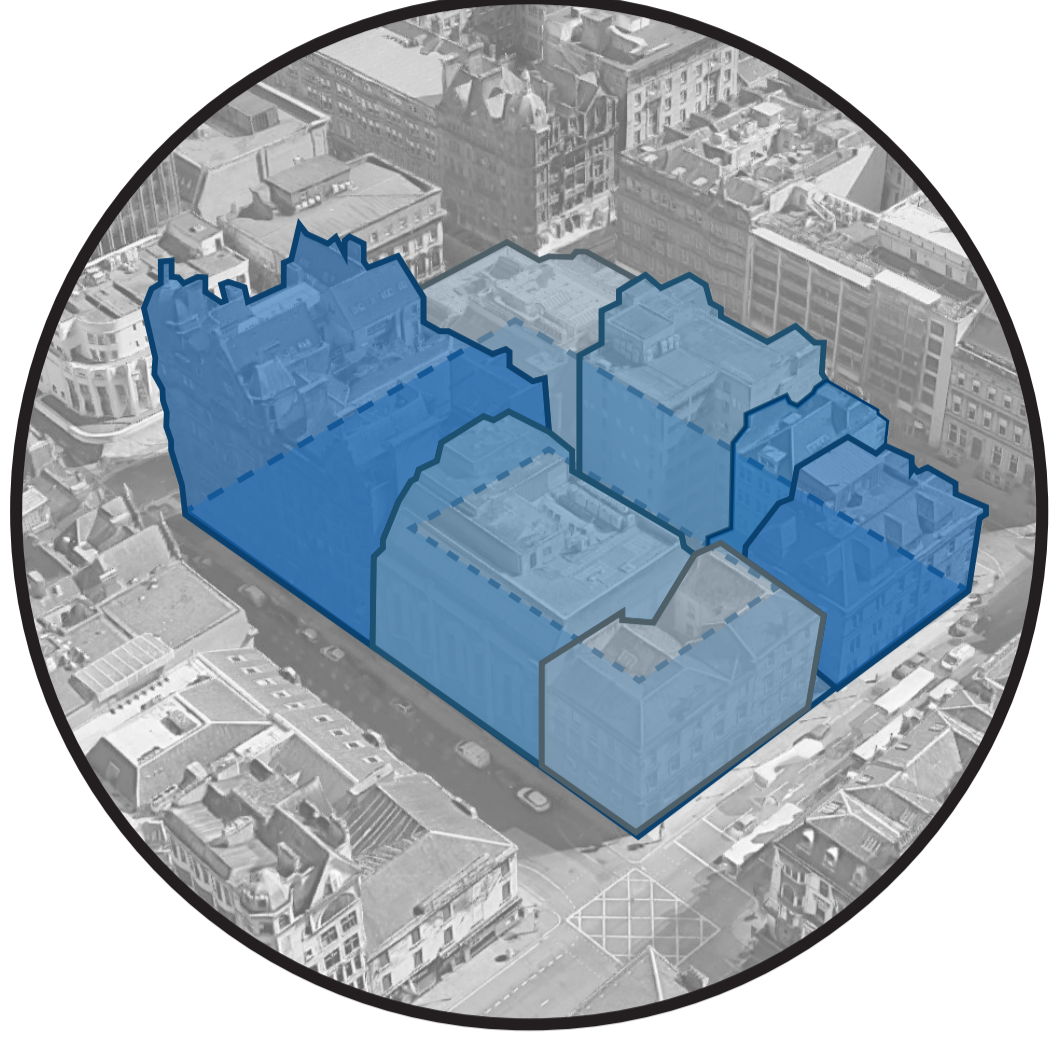


Overarching Concept

The architectural response to the brief is informed by the contextual and historical analysis undertaken which is displayed on accompanying boards. The response can be distilled as follows:



Grid & Block

Respond to the established urban grid and block typology with a contextually considered massing approach.



Sense of Solidity, Strong Verticals and Horizontals

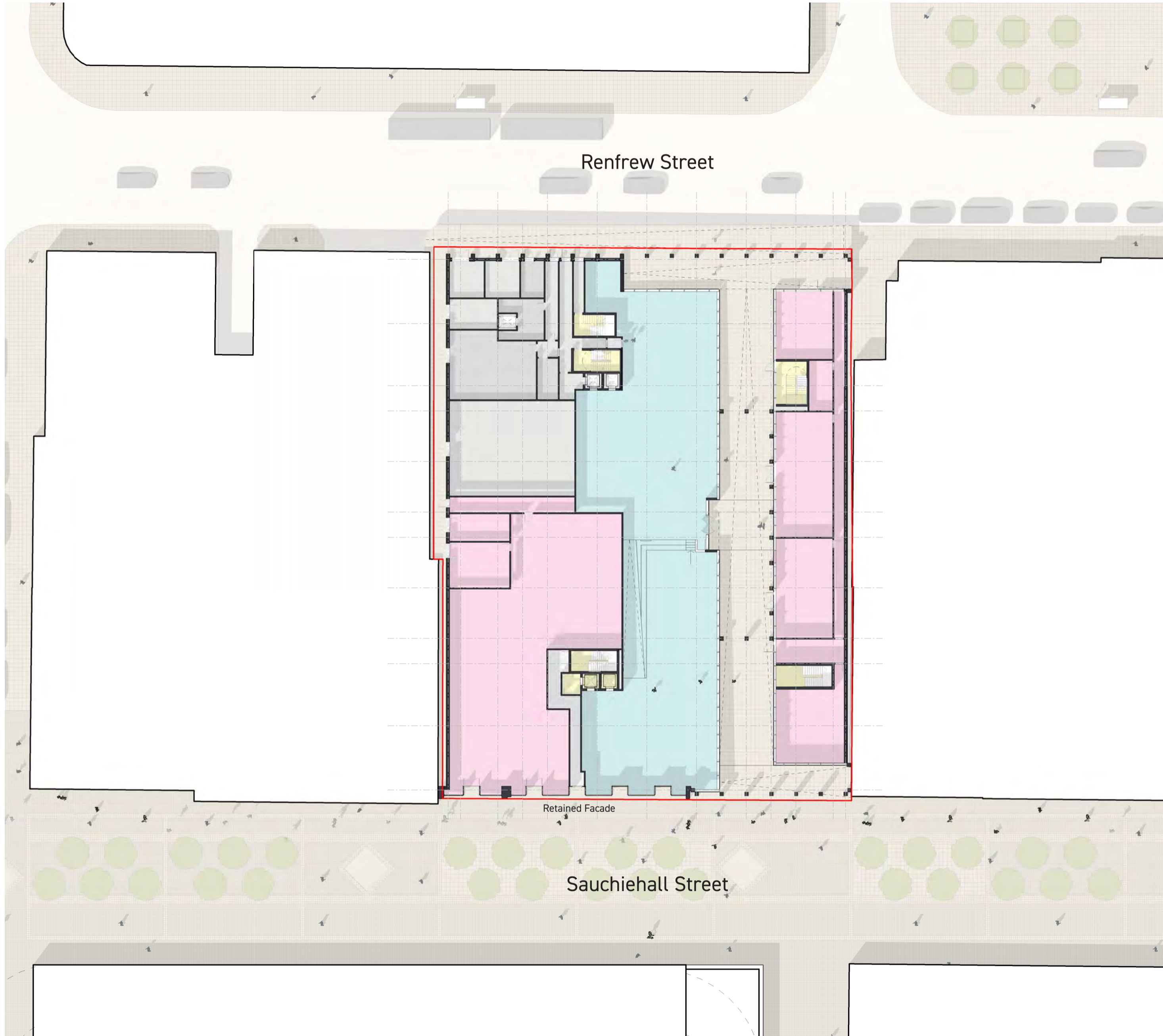
Evoke a feeling of solidity through the use of robust materials and design, referencing the strong vertical and horizontal elevational articulations utilised by architects like 'Greek' Thomson.



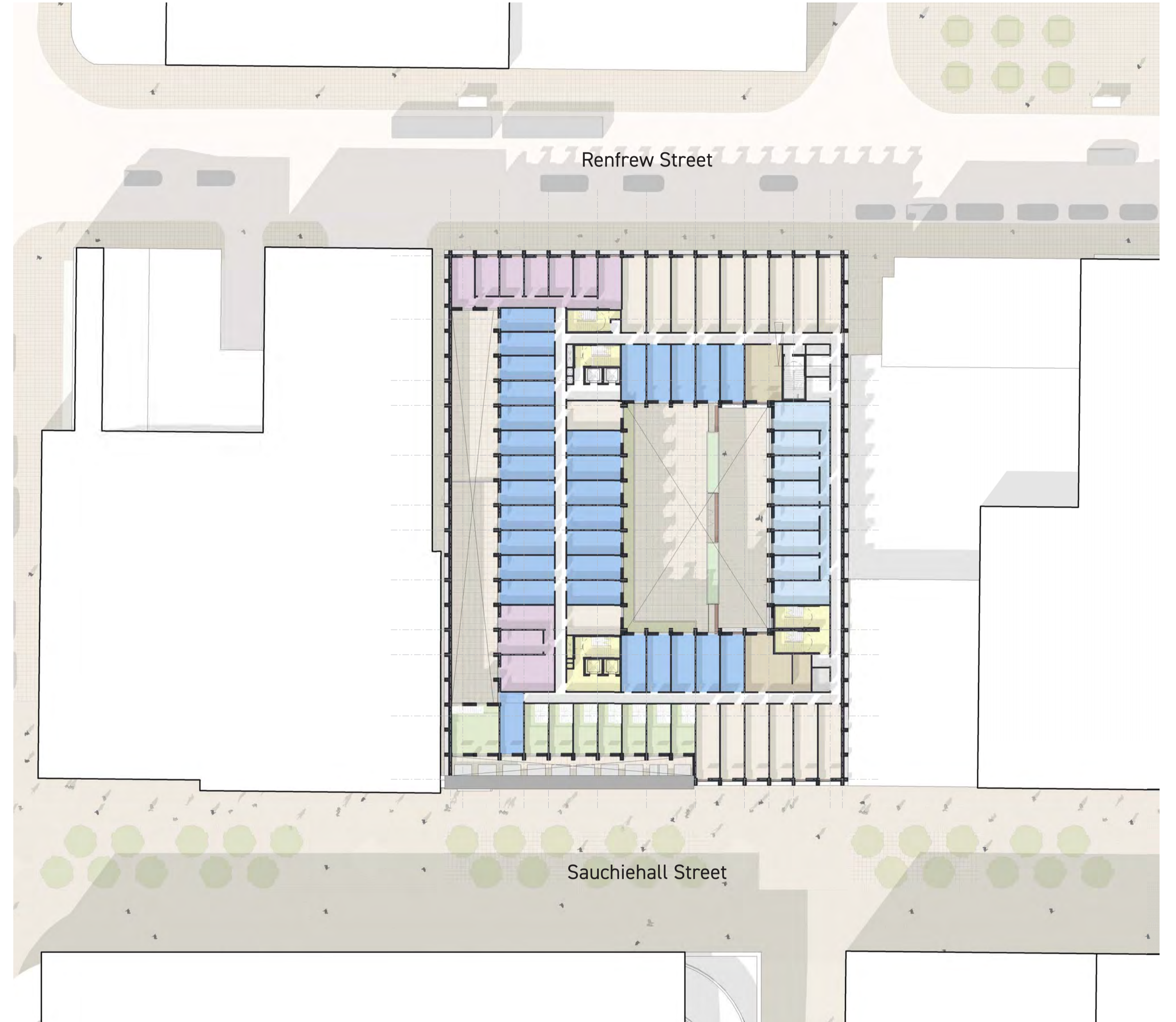
Arcade Reference

Create connections through the site by reinstating the historic arcade, providing a new internal environment full of active uses

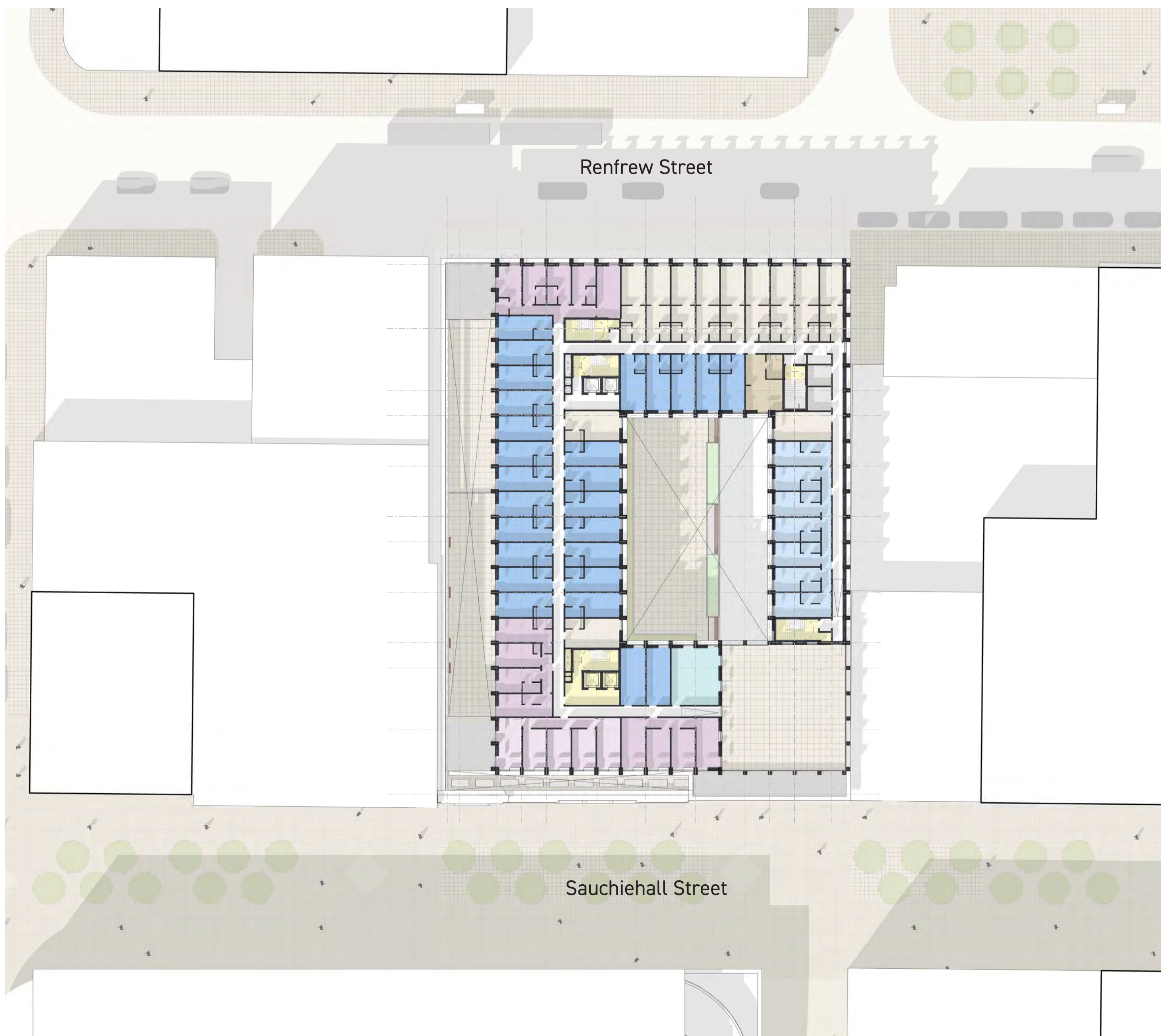
Ground Floor Plan



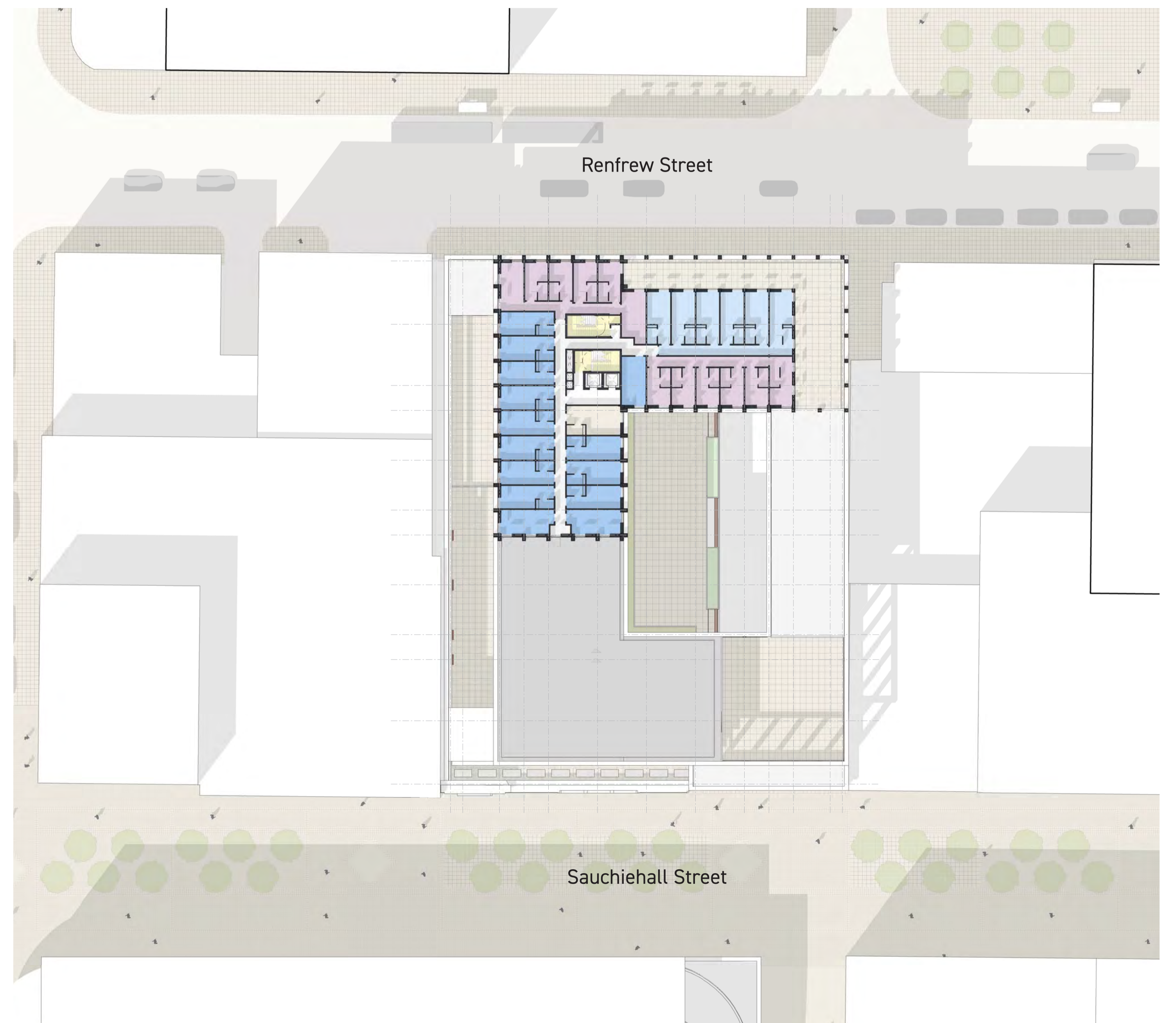
Fourth Floor Plan



Fifth Floor Plan



Eighth Floor Plan



172-184 Sauchiehall Street,
Glasgow
Appearance

Looking up at the Renfrew Street Facade



Typical Bay - Morning



Typical Bay - Midday



Typical Bay - Evening

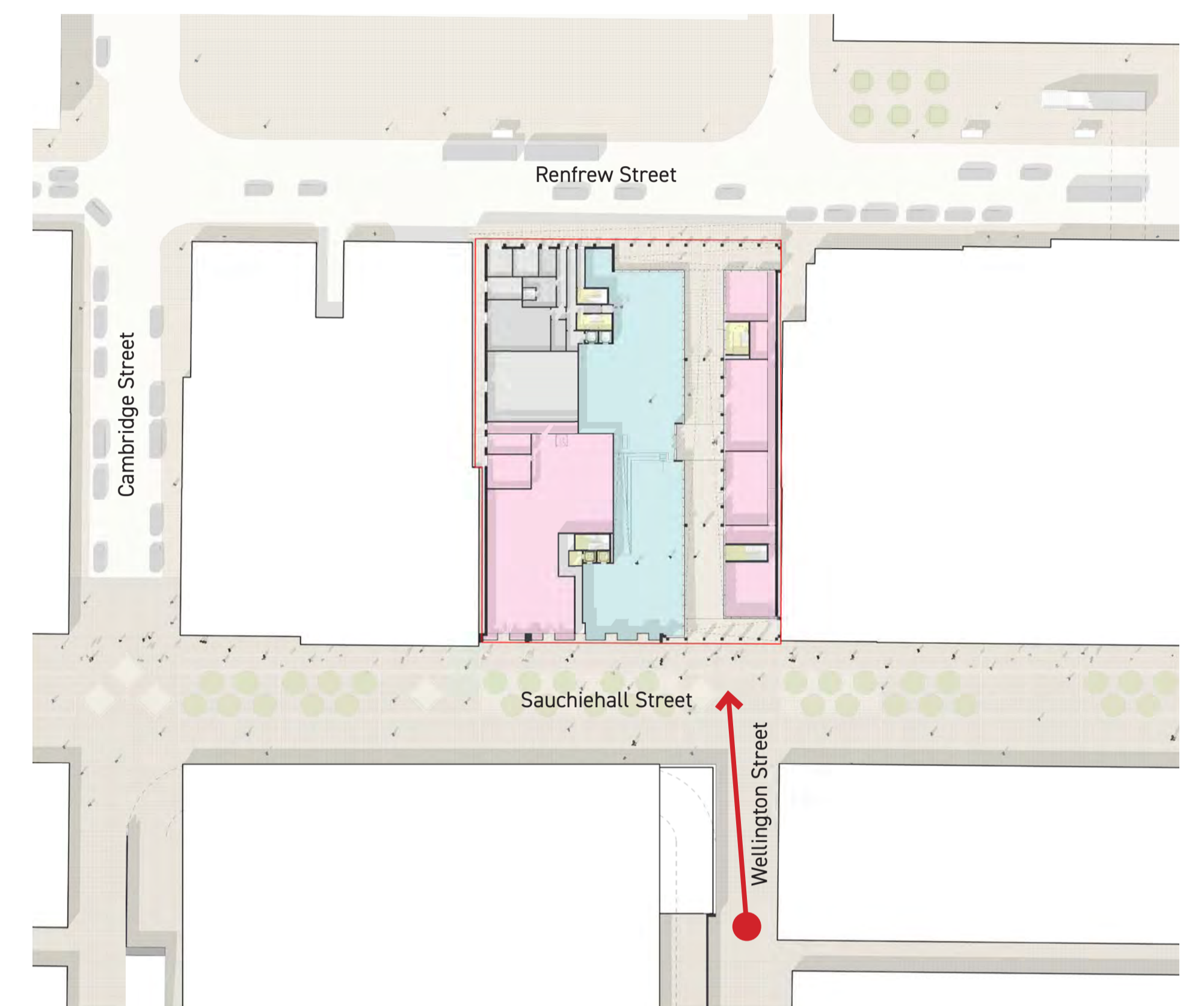


Sauchiehall Street to Renfrew Street Section





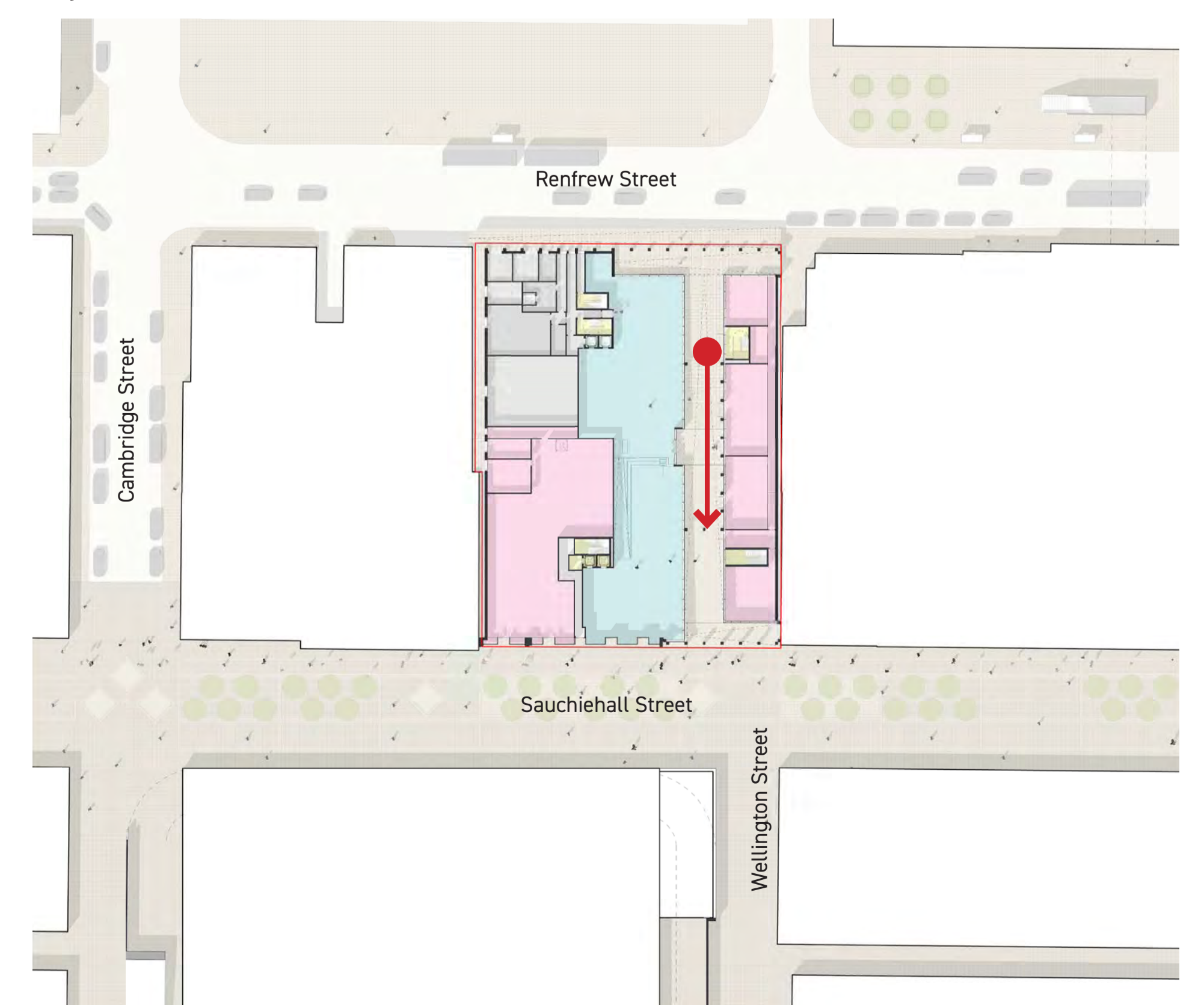
Key Plan (Ground Plan)



Wellington Street looking North



Key Plan (Ground Plan)



Proposed Arcade looking South towards Sauchiehall Street