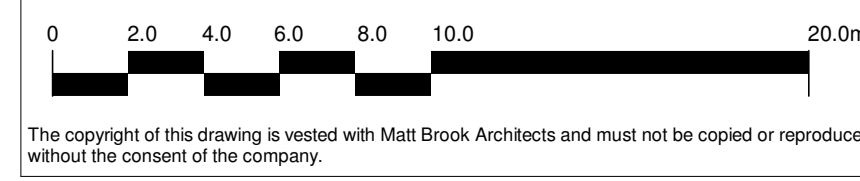


- ▽ Top of Parapet  
54500
- ▽ Level 16  
50150
- ▽ Level 15  
47300
- ▽ Level 14  
44450
- ▽ Level 13  
41600
- ▽ Level 12  
38750
- ▽ Level 11  
35900
- ▽ Level 10  
33050
- ▽ Level 09  
30200
- ▽ Level 08  
27350
- ▽ Level 07  
24500
- ▽ Level 06  
21650
- ▽ Level 05  
18800
- ▽ Level 04  
15900
- ▽ Level 03  
12800
- ▽ Level 02  
9800
- ▽ Level 01  
6800
- ▽ 00 - Upper Ground Floor  
2600



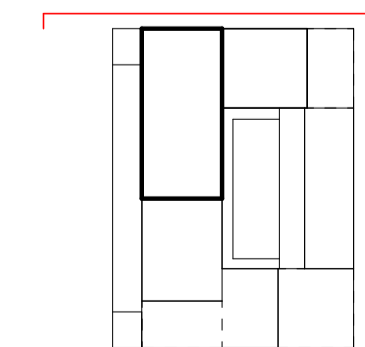
1 Elevation - North - Renfrew Street  
1 : 200



The copyright of this drawing is vested with Matt Brook Architects and must not be copied or reproduced without the consent of the company.

Rev.	Description	Date	Drawn	Chk.
P06	Planning Issue	14/02/24	ET	JD
P05	Planning adjustments	06/02/24	ET	JD
P04	Facade Panel profile to floors 14 - 17 amended	19/01/2024	ET	JD
P03	Massing Updated	12/04/2023	ET	JD
P02	Massing Updated	30/03/2023	ET	JD
P01	First Issue - facade pack for information	16/11/2022	DM	JD

1. GRC profiled horizontal band (every three storeys)
2. GRC Square profile column cladding
3. Aluminium perforated panel to window head
4. Window with DGU - floor-to ceiling with top-hung casement.
5. GRC single skin profiled cladding panel
6. Curtain walling to ground floor retail/reception/amenity etc.
7. Glazed balustrade to roof terraces
8. Aluminium External glazed door for roof access
9. GRC profiled horizontal band along boundary edge
10. GRC square profile columns
11. Green lines denote stainless steel cables for climbing plants
12. Pleated cladding to match facade, incorporating vertical ventilation openings



Client:  
**Fusion**  
Project:  
**Sauchiehall Street**  
Drawing Title  
**Proposed Elevations - North -  
Renfrew Street**  
Drawing Status  
**PLANNING**

**MattBrookArchitects**

St George's Gardens  
1F Spencers Way  
Manchester, M15 4UJ  
0161 806 1396

Drawing No. <b>SAU-MBA-B1-XX-DR-A-2051</b>		Revision <b>P06</b>	
Drawn <b>DM</b>	Checked <b>JD</b>	Paper Size <b>A1</b>	Scale <b>As Indicated</b>
Date <b>11/10/22</b>			