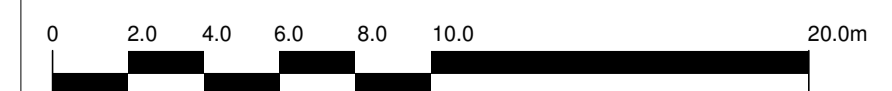


- ▽ Top of Parapet
54500
- ▽ Level 16
50150
- ▽ Level 15
47300
- ▽ Level 14
44450
- ▽ Level 13
41600
- ▽ Level 12
38750
- ▽ Level 11
35900
- ▽ Level 10
33050
- ▽ Level 09
30200
- ▽ Level 08
27350
- ▽ Level 07
24500
- ▽ Level 06
21650
- ▽ Level 05
18800
- ▽ Level 04
15800
- ▽ Level 03
12800
- ▽ Level 02
9800
- ▽ Level 01
6800
- ▽ 00 - Upper Ground Floor
2600



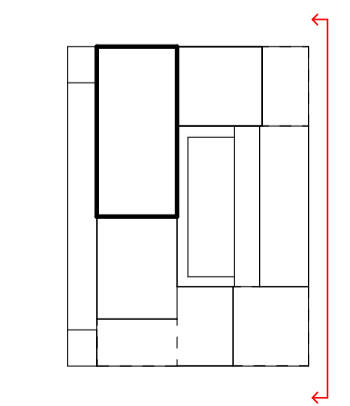
1 Elevation - East
1 : 200



The copyright of this drawing is vested with Matt Brook Architects and must not be copied or reproduced without the consent of the company.

| Rev. | Description | Date | Drawn | Chk. |
|------|--|------------|-------|------|
| P05 | Planning Issue | 14/02/24 | ET | JD |
| P04 | Planning adjustments | 06/02/24 | ET | JD |
| P03 | Facade Panel profile to floors 14 - 17 amended | 19/01/2024 | ET | JD |
| P02 | Massing Updated | 30/03/2023 | ET | JD |
| P01 | First Issue - facade pack for information | 16/11/2022 | DM | JD |

1. GRC profiled horizontal band (every three storeys)
2. GRC Square profile column cladding
3. Aluminium perforated panel to window head
4. Window with DGU - floor-to ceiling with top-hung casement.
5. GRC single skin profiled cladding panel
6. Curtain walling to ground floor retail/reception/amenity etc.
7. Glazed balustrade to roof terraces
8. Aluminium External glazed door for roof access
9. GRC profiled horizontal band along boundary edge
10. GRC square profile columns
11. Green lines denote stainless steel cables for climbing plants
12. Pleated cladding to match facade, incorporating vertical ventilation openings



Client:
Fusion
Project:
Sauchiehall Street
Drawing Title:
Proposed Elevations - East
Drawing Status:
PLANNING

MattBrookArchitects
St George's Gardens
1F Spencers Way
Manchester, M15 4UZ
0161 806 1396

Drawing No.
SAU-MBA-B1-XX-DR-A-2052

Revision
P05

| Drawn | Checked | Paper Size | Scale | Date |
|-------|---------|------------|--------------|----------|
| DM | JD | A1 | As Indicated | 11/11/22 |