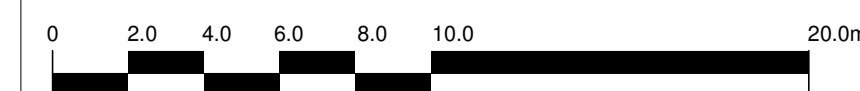


- ▽ Top of Parapet
54500
- ▽ Level 16
50150
- ▽ Level 15
47300
- ▽ Level 14
44450
- ▽ Level 13
41600
- ▽ Level 12
38750
- ▽ Level 11
35900
- ▽ Level 10
33050
- ▽ Level 09
30200
- ▽ Level 08
27350
- ▽ Level 07
24500
- ▽ Level 06
21650
- ▽ Level 05
18800
- ▽ Level 04
15800
- ▽ Level 03
12800
- ▽ Level 02
9800
- ▽ Level 01
6800
- ▽ 00 - Upper Ground Floor
2600



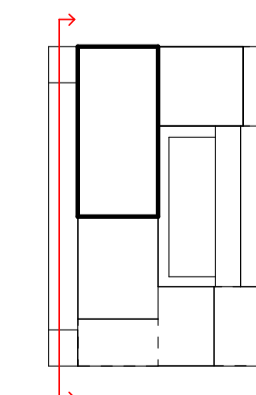
1 Elevation - West
1 : 200



The copyright of this drawing is vested with Matt Brook Architects and must not be copied or reproduced without the consent of the company.

Rev.	Description	Date	Drawn	Chk.
P06	Planning Issue	14/02/24	ET	JD
P05	Planning adjustments	06/02/24	ET	JD
P04	Facade Panel profile to floors 14 - 17 amended	19/01/2024	ET	JD
P03	Missing Updated	12/04/2023	ET	JD
P02	Missing Updated	30/03/2023	ET	JD
P01	First Issue - facade pack for information	16/11/2022	DM	JD

1. GRC profiled horizontal band (every three storeys)
2. GRC Square profile column cladding
3. Aluminium perforated panel to window head
4. Window with DGU - floor-to ceiling with top-hung casement.
5. GRC single skin profiled cladding panel
6. Curtain walling to ground floor retail/reception/amenity etc.
7. Glazed balustrade to roof terraces
8. Aluminium External glazed door for roof access
9. GRC profiled horizontal band along boundary edge
10. GRC square profile columns
11. Green lines denote stainless steel cables for climbing plants
12. Pleated cladding to match facade, incorporating vertical ventilation openings



Client:
Fusion
Project:
Sauchiehall Street

Drawing Title
Proposed Elevations - West
Drawing Status
PLANNING

MattBrookArchitects

St George's Gardens
1F Spencers Way
Manchester, M15 4UZ
0161 806 1396

Drawing No. SAU-MBA-B1-XX-DR-A-2053				Revision P06
Drawn DM	Checked JD	Paper Size A1	Scale As Indicated	Date 11/11/22