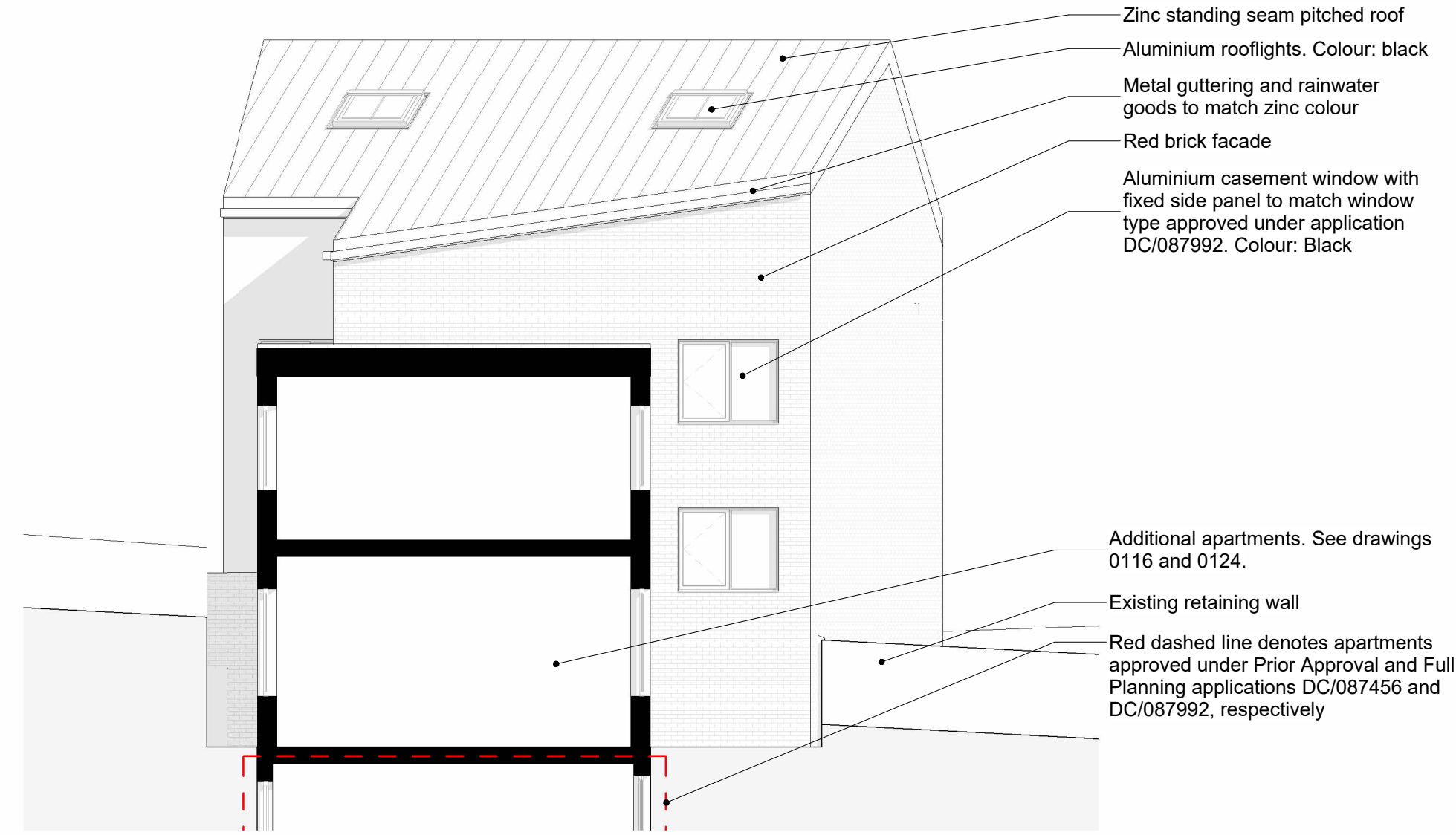


- Zinc standing seam pitched roof
- Metal guttering and rainwater goods to match zinc colour
- Aluminium glazed sliding doors to match window type approved under application DC/087992. Colour: Black
- Black metal railings to roof terrace
- Aluminium fixed window to match window type approved under application DC/087992. Colour: Black
- Brick facade and roof terrace wall
- Aluminium casement window with fixed lower panel to match window type approved under application DC/087992. Colour: Black
- Black metal railings to balcony
- Aluminium frame door and fanlight with timber door leaf.
- Aluminium casement window to match window type approved under application DC/087992. Colour: Black
- Angled brick boundary wall to match brick detail shown on approved application DC/087992

1 ELV - Proposed Townhouses South East Elevation (Pickford's Brow)

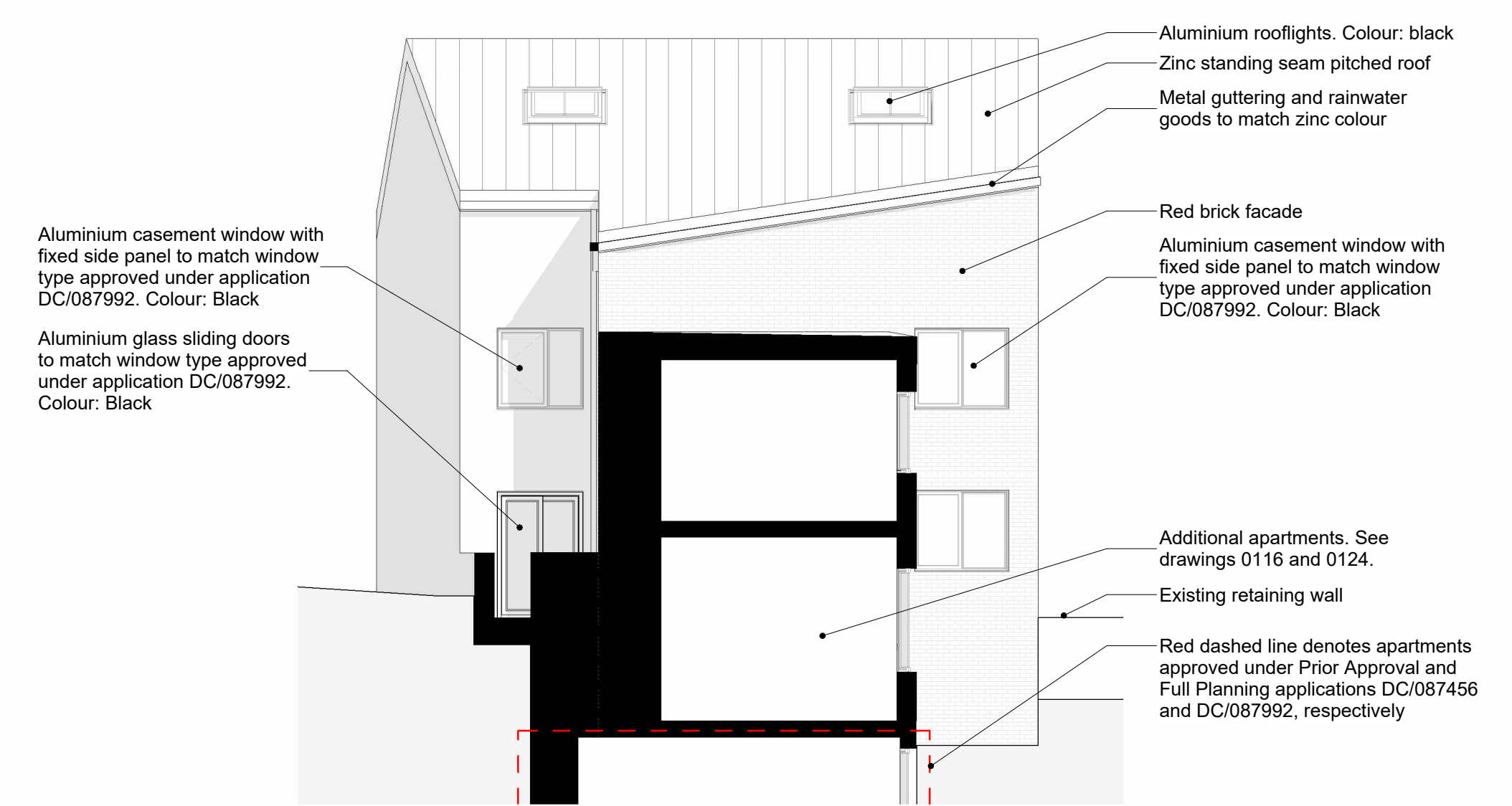
scale: 1 : 100



- Zinc standing seam pitched roof
- Aluminium rooflights. Colour: black
- Metal guttering and rainwater goods to match zinc colour
- Red brick facade
- Aluminium casement window with fixed side panel to match window type approved under application DC/087992. Colour: Black
- Additional apartments. See drawings 0116 and 0124.
- Existing retaining wall
- Red dashed line denotes apartments approved under Prior Approval and Full Planning applications DC/087456 and DC/087992, respectively

2 ELV - Proposed Townhouses North West Elevation (Pickford's Brow)

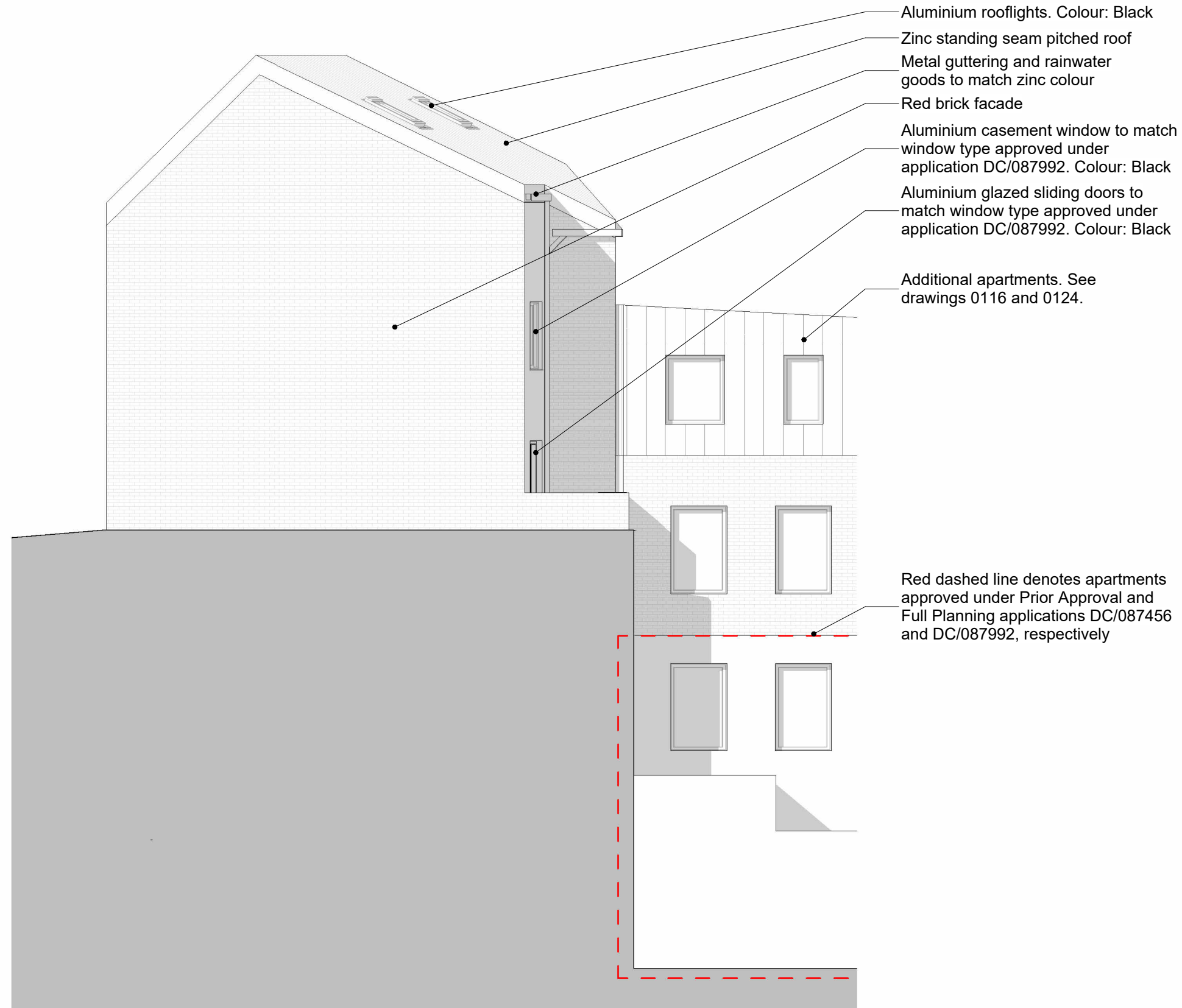
scale: 1 : 100



- Aluminium rooflights. Colour: black
- Zinc standing seam pitched roof
- Metal guttering and rainwater goods to match zinc colour
- Red brick facade
- Aluminium casement window with fixed side panel to match window type approved under application DC/087992. Colour: Black
- Aluminium glass sliding doors to match window type approved under application DC/087992. Colour: Black
- Additional apartments. See drawings 0116 and 0124.
- Existing retaining wall
- Red dashed line denotes apartments approved under Prior Approval and Full Planning applications DC/087456 and DC/087992, respectively

3 ELV - Proposed Townhouse North Elevation (Pickford's Brow)

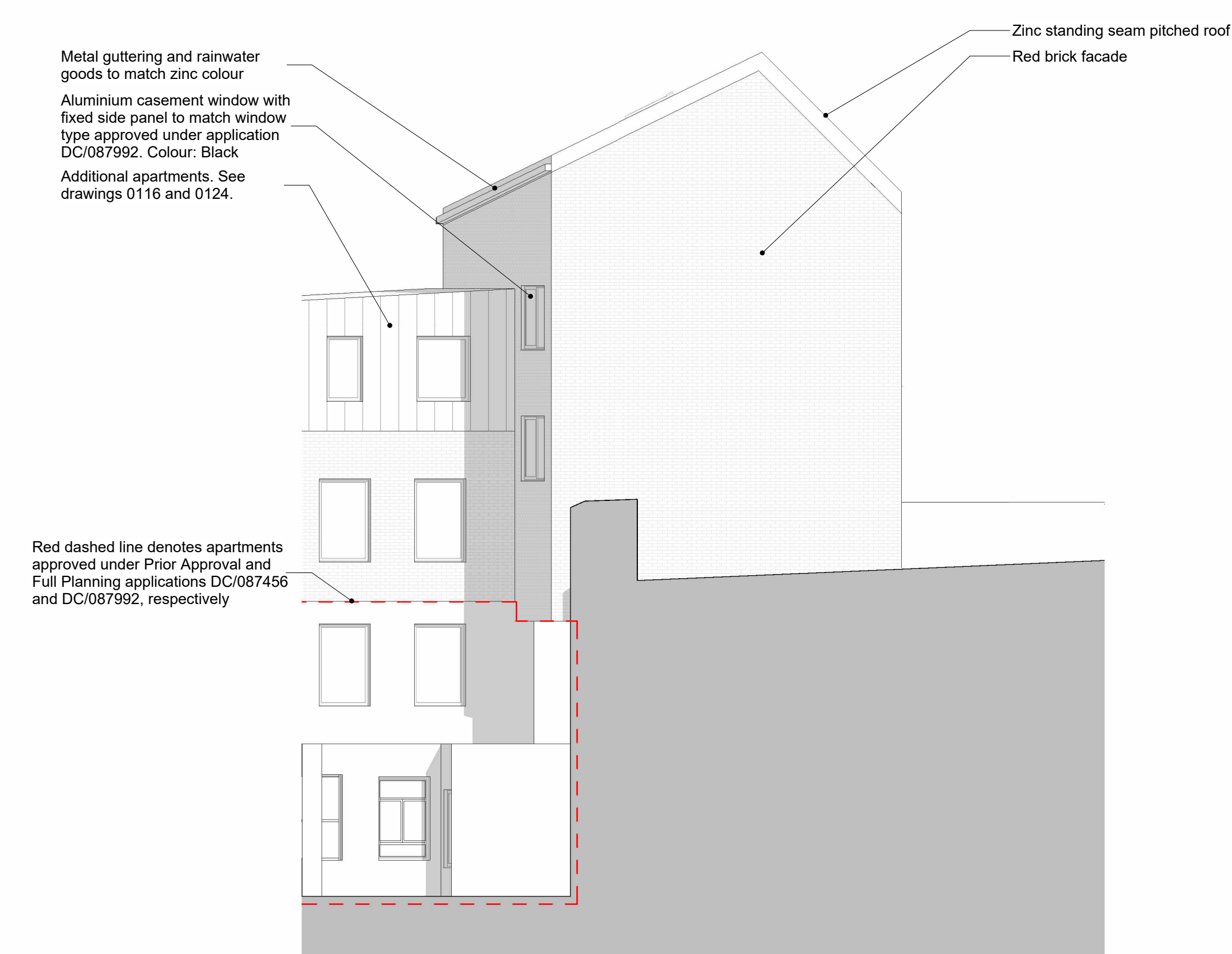
scale: 1 : 100



- Aluminium rooflights. Colour: Black
- Zinc standing seam pitched roof
- Metal guttering and rainwater goods to match zinc colour
- Red brick facade
- Aluminium casement window to match window type approved under application DC/087992. Colour: Black
- Aluminium glazed sliding doors to match window type approved under application DC/087992. Colour: Black
- Additional apartments. See drawings 0116 and 0124.
- Red dashed line denotes apartments approved under Prior Approval and Full Planning applications DC/087456 and DC/087992, respectively

4 ELV - Proposed Townhouses North East Elevation (Pickford's Brow)

scale: 1 : 100



- Metal guttering and rainwater goods to match zinc colour
- Aluminium casement window with fixed side panel to match window type approved under application DC/087992. Colour: Black
- Additional apartments. See drawings 0116 and 0124.
- Red dashed line denotes apartments approved under Prior Approval and Full Planning applications DC/087456 and DC/087992, respectively
- Zinc standing seam pitched roof
- Red brick facade

5 ELV - Proposed Townhouses South West Elevation (Pickford's Brow)

scale: 1 : 100



51 Great Underbank

GA Elevation
Proposed Townhouse Elevations - Pickford's Brow

Client Name	Project Name	Project Status	Scale
Kion Developments	51/51A Great Underbank Skipton SK1 1NE	PLANNING	1:100 @ A1
		SAA PCK	17.01.24

0091-KA-XX-ZZ-DR-A-0123

1

Copyright © 2024 Kelsall Architects. All rights reserved. This drawing is the property of Kelsall Architects and is not to be reproduced, stored in a retrieval system, or transmitted in any form or by any means, electronic, mechanical, photocopying, recording, or otherwise, without the prior written permission of Kelsall Architects. The information contained herein is confidential and intended solely for the use of the individual named. It is not to be distributed, copied, or otherwise used for any other purpose. All dimensions and notes should read, only from these sheets when in set, for the drawing.