

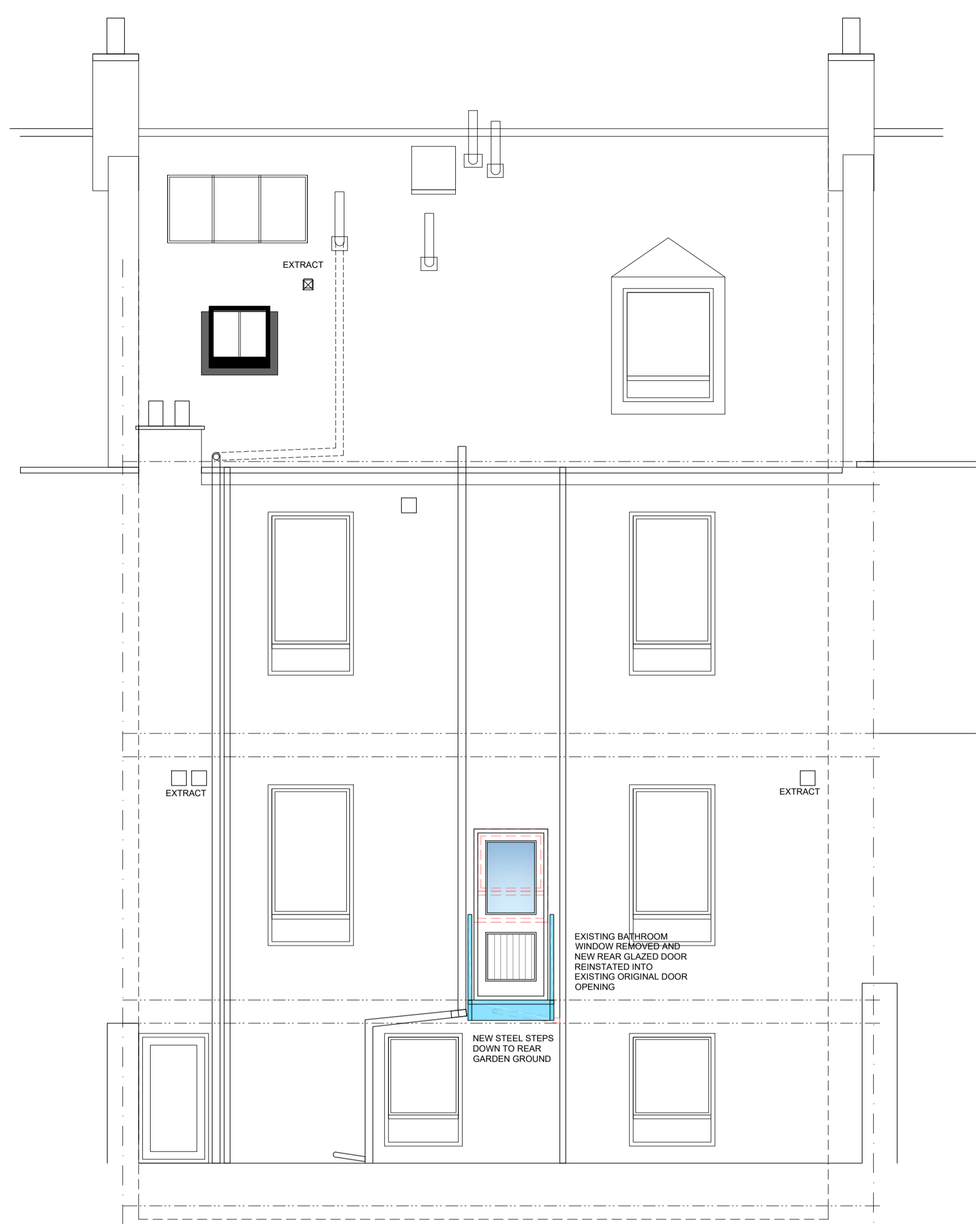
NOTE:
All proprietary goods and materials are to be fitted in accordance with manufacturer's instructions, Codes of Practice and British Standards. All dimensions to be verified by the Contractor on site. Do not scale drawings, work to figured dimensions only.

© This drawing remains the Copyright of Fouin+Bell Architects Ltd. and may not be reproduced in whole or in any part without prior written permission.

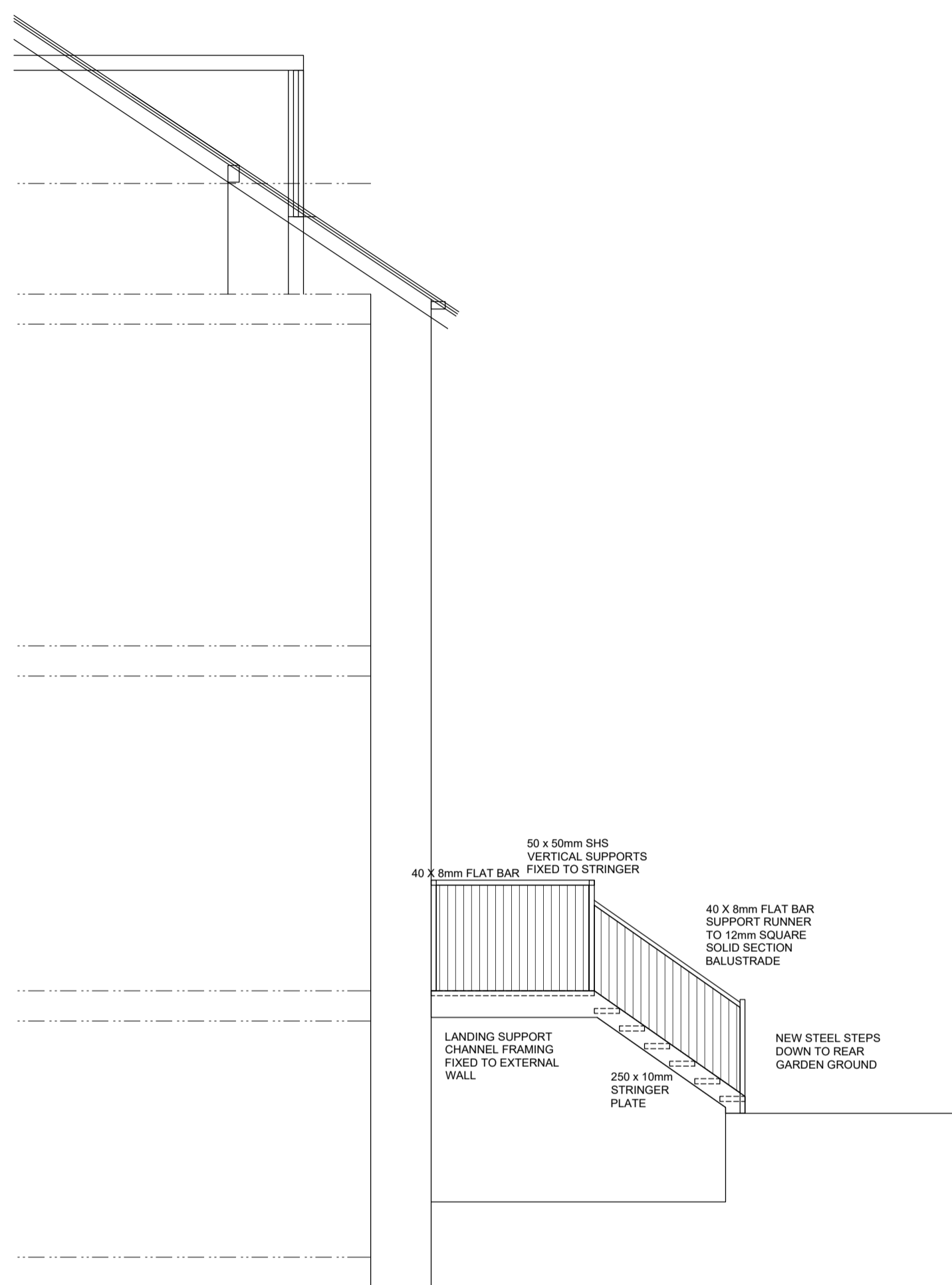
REVISION / DESCRIPTION / DATE		
A	WARRANT AMENDMENTS	JUNE 23
B	AOW AMENDMENTS	FEB 24



Existing bathroom rear window



Proposed Rear Elevation



Proposed Side Elevation

ELECTRICAL LEGEND	
Double 13a socket outlet	⊞
Single 13a socket outlet	⊞
Double 13a socket outlet above w/top	⊞
5A socket outlet	5 ⊞
13a socket outlet below w/top switched above w/top	S-PL ⊞
13a spur outlet	SPUR ⊞
Shaver socket	SV ⊞
Cooker switch and 13a socket	CCU
Light switch	⊞
Light switch - Dimmer	2-way ⊞
Light switch - Two way	2-way ⊞
Ceiling rose outlet	⊞
White GU10 recessed light (LED)	⊞
White 50watt low voltage light	⊞ LV
Wall mounted external (pir) light fitting	⊞
Wall mounted light fitting	⊞
Batten holder	⊞
Lumitron or equal surface mounted 2 x 40 watt fluorescent fittings - with diffuser	⊞
Passive Infra Red wall mounted	⊞
Wall mounted luminaries	⊞
Mirror light	ML ⊞
Recessed single gimble fitting	⊞
Recessed twin gimble fitting	⊞
Telephone point	⊞ TEL
TV coaxial socket outlet	⊞ TV
Optical Smoke detector	⊞
Smoke detector	⊞
Heat detector	⊞
Carbon Dioxide detector	⊞ CO2
Carbon Monoxide detector	⊞ CO
Doorbell	⊞ Bell
LED Light strip	⊞
TV coaxial socket outlet	⊞ DATA

Drawing Status

LBC

Raymond Bryan
Architecture - Design - Planning
1 John's Place
Edinburgh
EH6 7EL
Tel: 0131 4787100
Mob: 07917 192 905
Email: raymondbryan1@hotmail.com

CLIENT

R & D Properties Ltd

PROJECT

PROPOSED ALTERATIONS
49 PORTLAND STREET
EDINBURGH
EH6 4AZ

SCALE@A1 1:50 @ A1 - 1:100 @ A3	DATE June 2023
DRAWN BY rb	CHECKED rb
STAGE Warrant	

DRAWING

ELEVATIONS

PROJECT NUMBER 2301	DRAWING NUMBER TH BW01	REVISION B
-------------------------------	---------------------------	----------------------