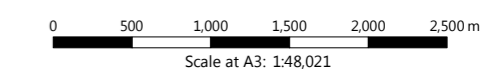


Key

London Borough of Bexley Boundary

Surface water flood extents

- 1 in 30 (3.33%) annual probability
- 1 in 100 (1%) annual probability
- 1 in 1000 (0.1%) annual probability



© Crown Copyright. All rights reserved. Licence number AL100001776.

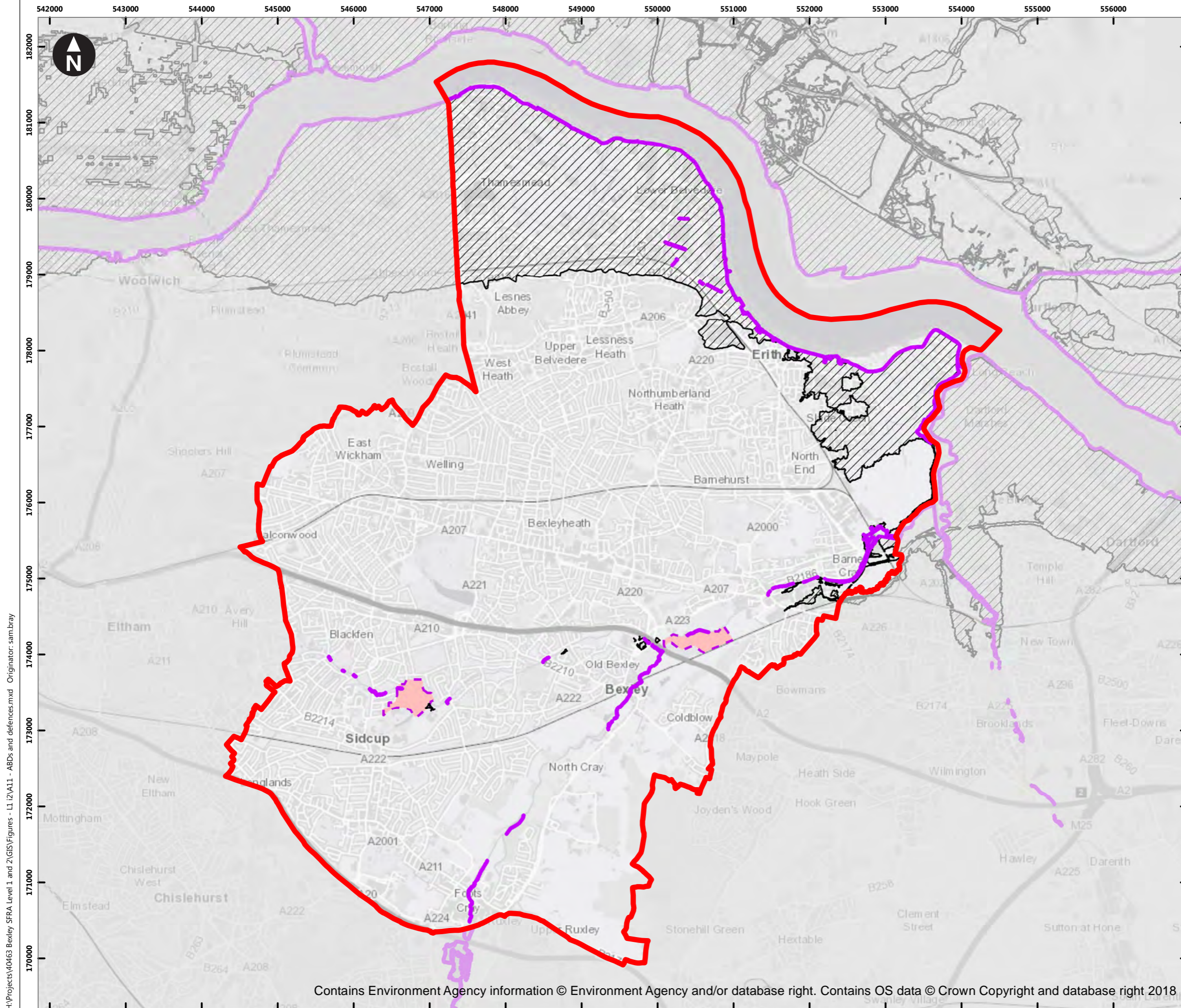
London Borough of Bexley
Level 1 SFRA

Figure A10
Surface Water Flood Extents

November 2019

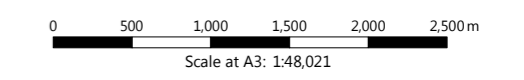


H:\Projects\40463 Bexley SFRA Level 1 and 2\GIS\Figures - L1\2\A10 - surface water risk_2Nov19.mxd Originator: francesca.hurt



- Key
- London Borough of Bexley Boundary
 - Flood defences (SoP over 1 in 100 year AEP)
 - Areas Benefiting from Flood Defences
 - Flood Storage Areas

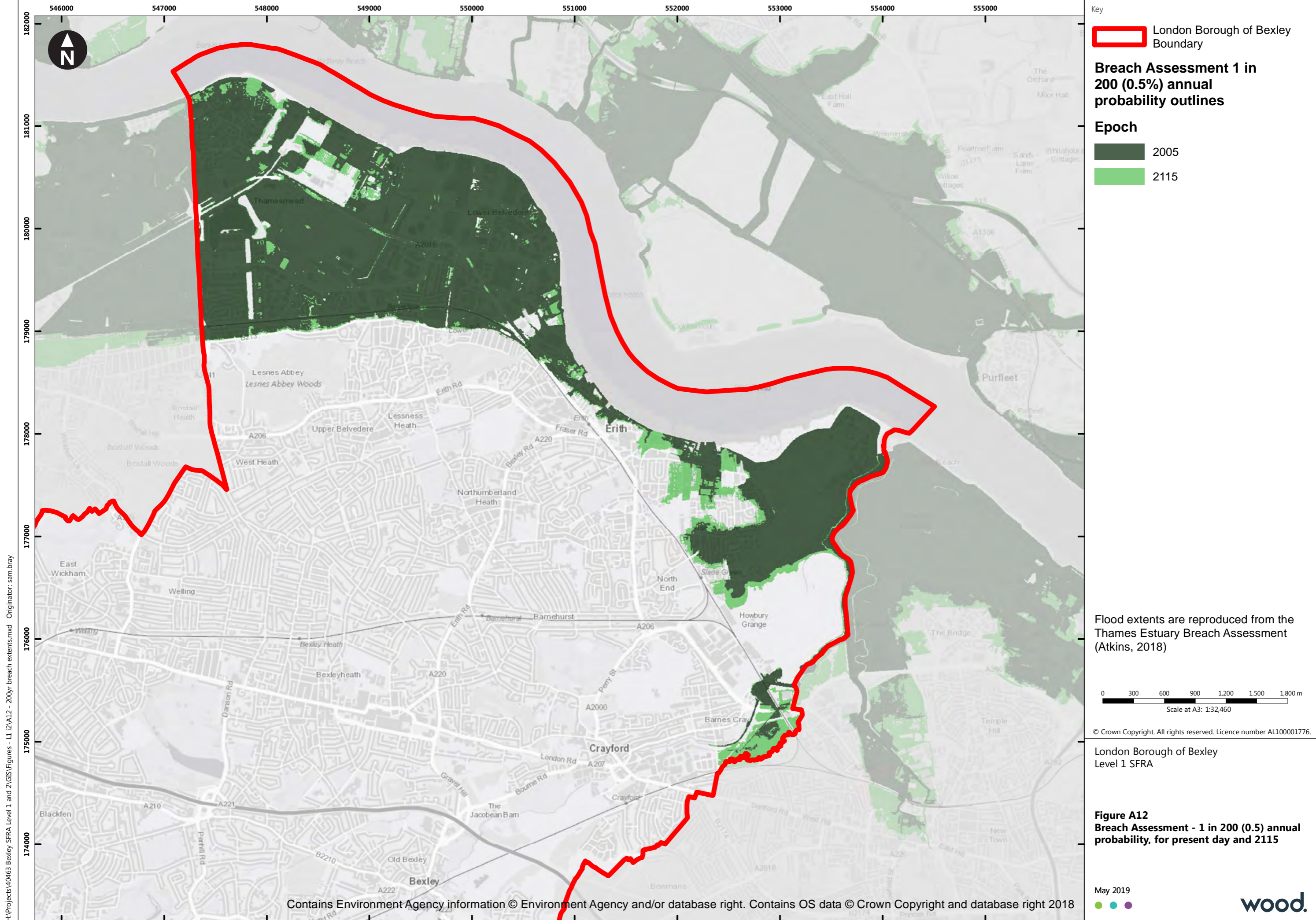
SoP - Standard of Protection, this refers to the design standard of the defence, i.e. providing protection against up to the 1 in 100 year AEP event.



© Crown Copyright. All rights reserved. Licence number AL100001776.

London Borough of Bexley
Level 1 SFRA

Figure A11
Areas Benefitting from Flood Defences, and Flood Defence Locations



Key

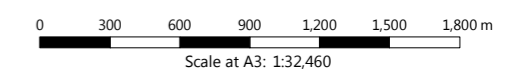
London Borough of Bexley Boundary

Breach Assessment 1 in 200 (0.5%) annual probability outlines

Epoch

- 2005
- 2015

Flood extents are reproduced from the Thames Estuary Breach Assessment (Atkins, 2018)



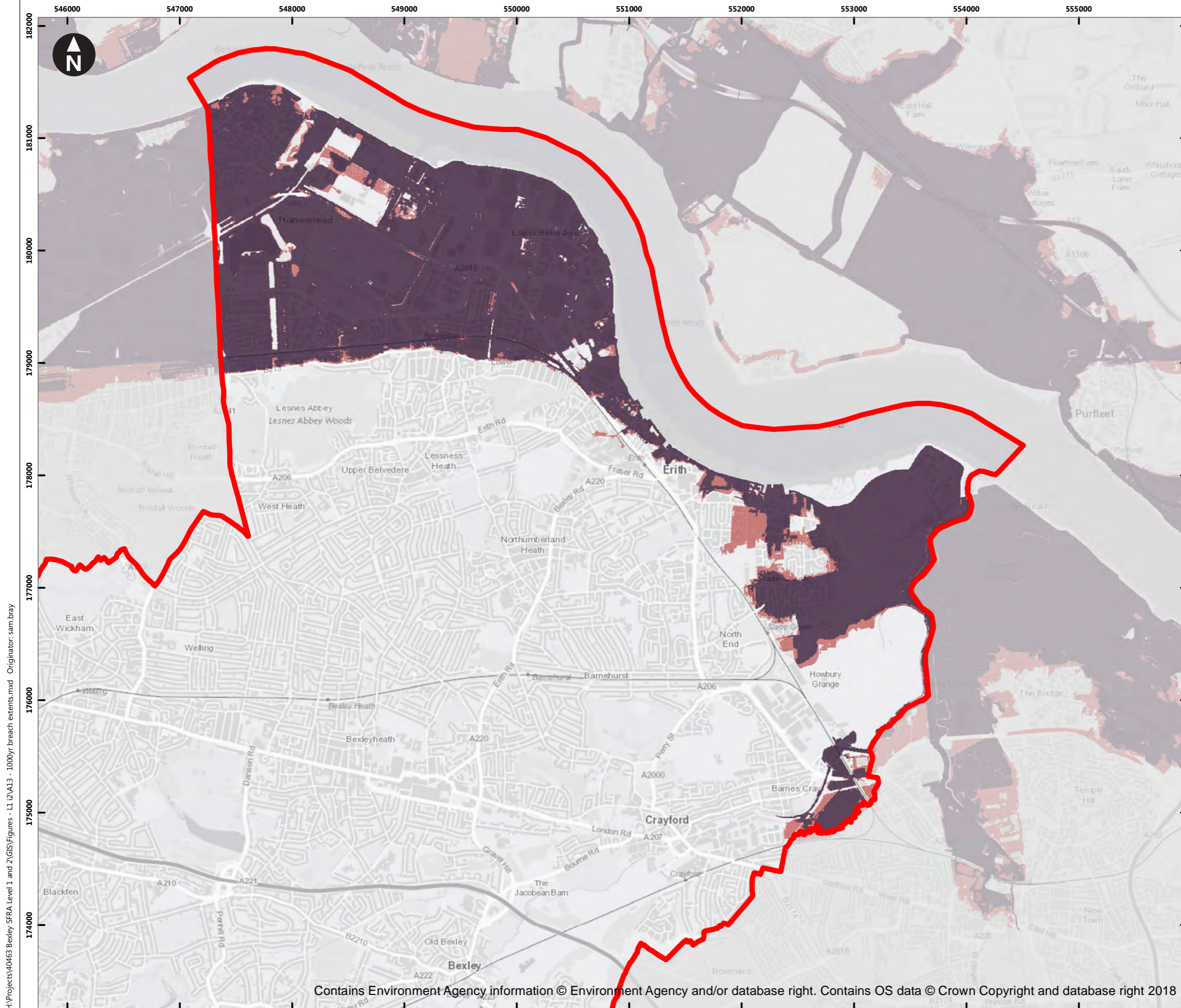
© Crown Copyright. All rights reserved. Licence number AL100001776.

London Borough of Bexley
Level 1 SFRA

Figure A12
Breach Assessment - 1 in 200 (0.5) annual probability, for present day and 2115

H:\Projects\40463 Bexley SFRA Level 1 and 2\GIS\Figures - L1\A12 - 200yr breach extents.mxd Originator: sam.bray

Contains Environment Agency information © Environment Agency and/or database right. Contains OS data © Crown Copyright and database right 2018



Key

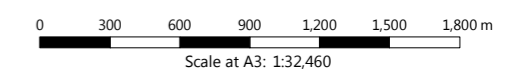
London Borough of Bexley Boundary

Breach Assessment 1 in 1000 (0.1%) annual probability outlines

Epoch

- 2005
- 2015

Flood extents are reproduced from the Thames Estuary Breach Assessment (Atkins, 2018)

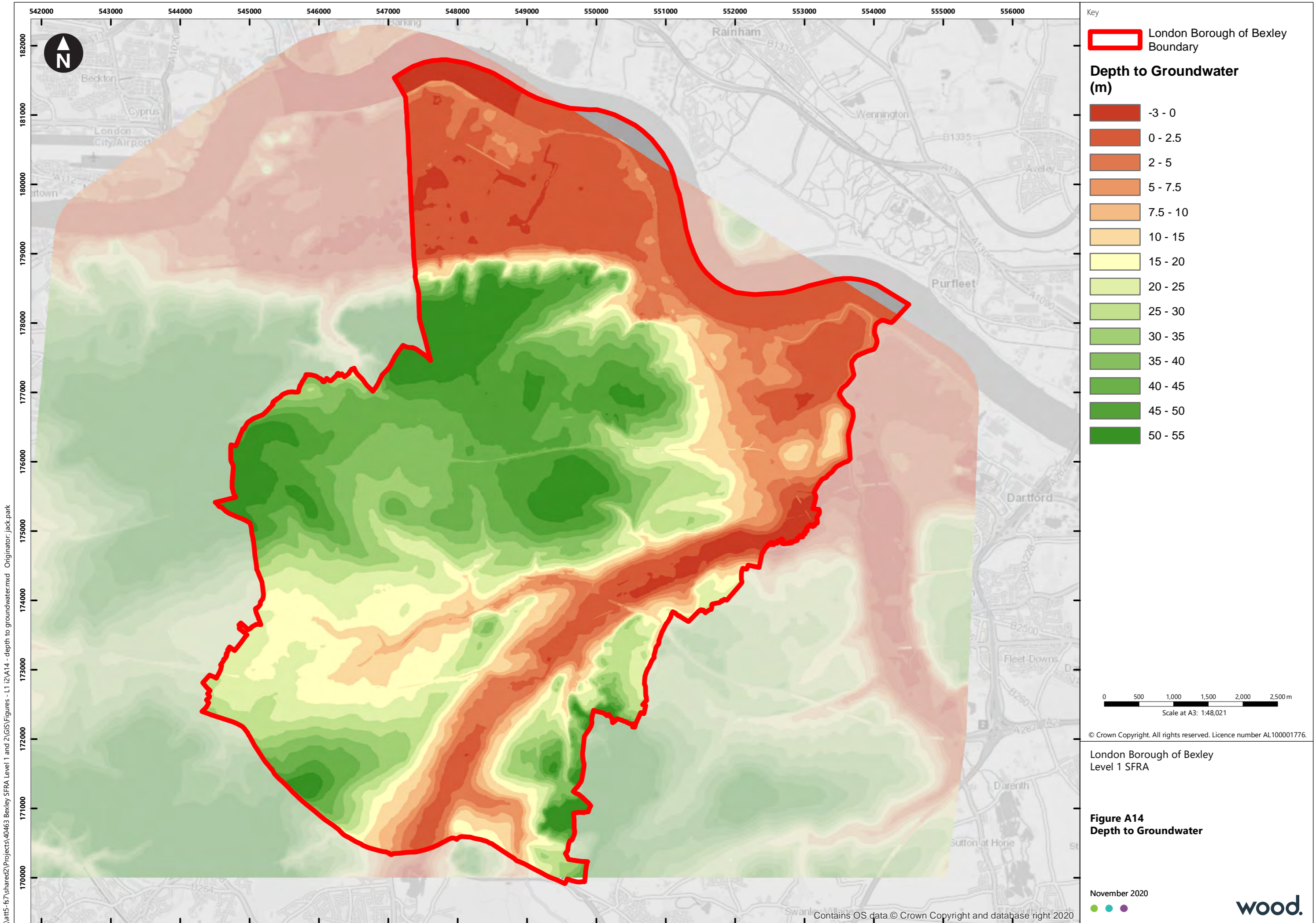


© Crown Copyright. All rights reserved. Licence number AL100001776.

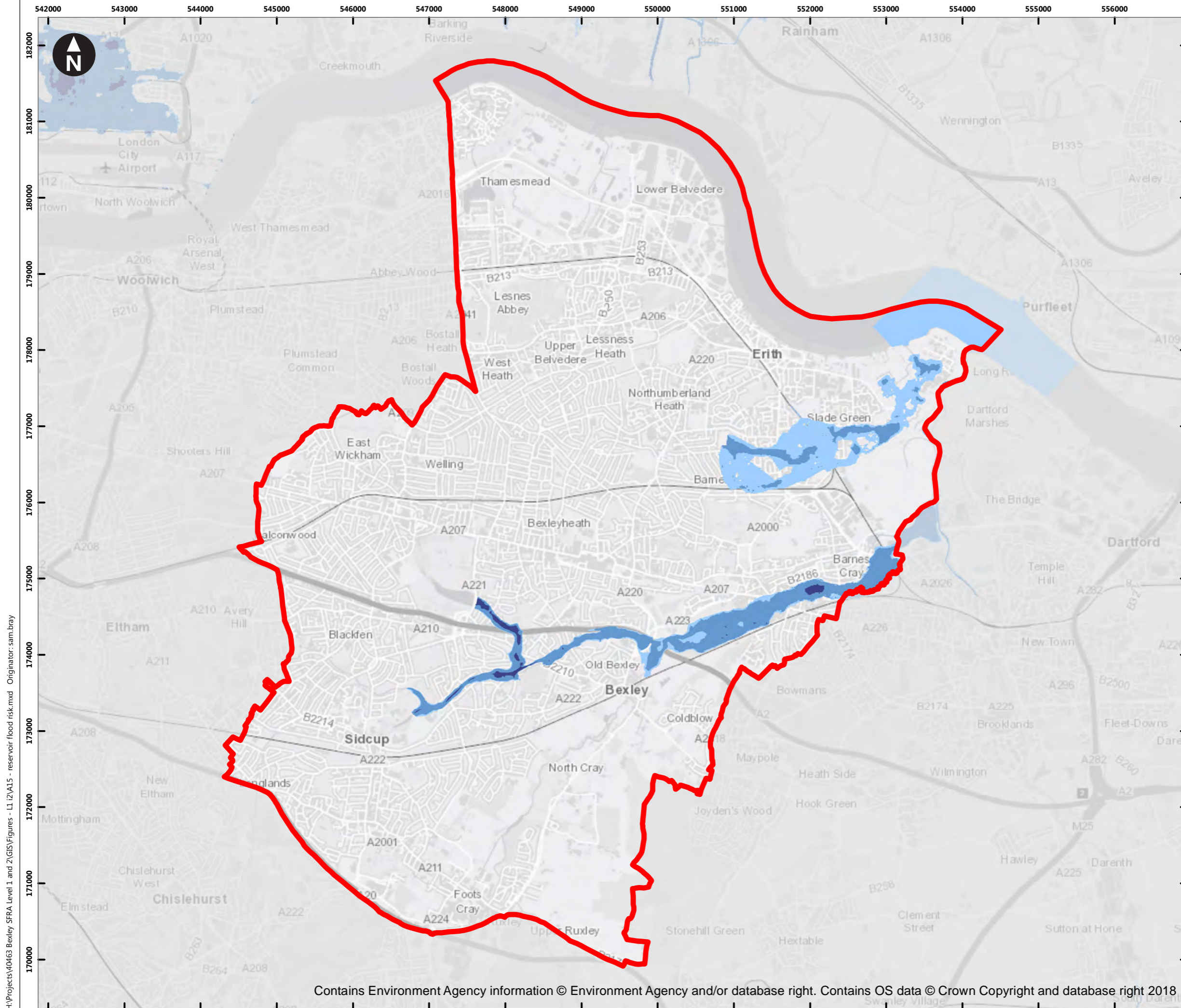
London Borough of Bexley
Level 1 SFRA

Figure A13
Breach Assessment - 1 in 1000 (0.1%) annual probability, for present day and 2115

H:\Projects\40463 Bexley SFRA Level 1 and 2\GIS\Figures - L1\2\A13 - 1000yr breach extents.mxd Originator: sam.bray



\\att5-fs7\shared2\Projects\40463 Bexley_SFRA_Level 1 and 2\GIS\Figures - L1\2\A14 - depth to groundwater.mxd Originator: jack.park



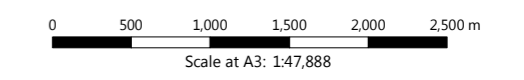
Key

London Borough of Bexley Boundary

Risk of flooding from reservoirs

Flood depth (m)

- Below 0.3m
- 0.3 - 2m
- Over 2m

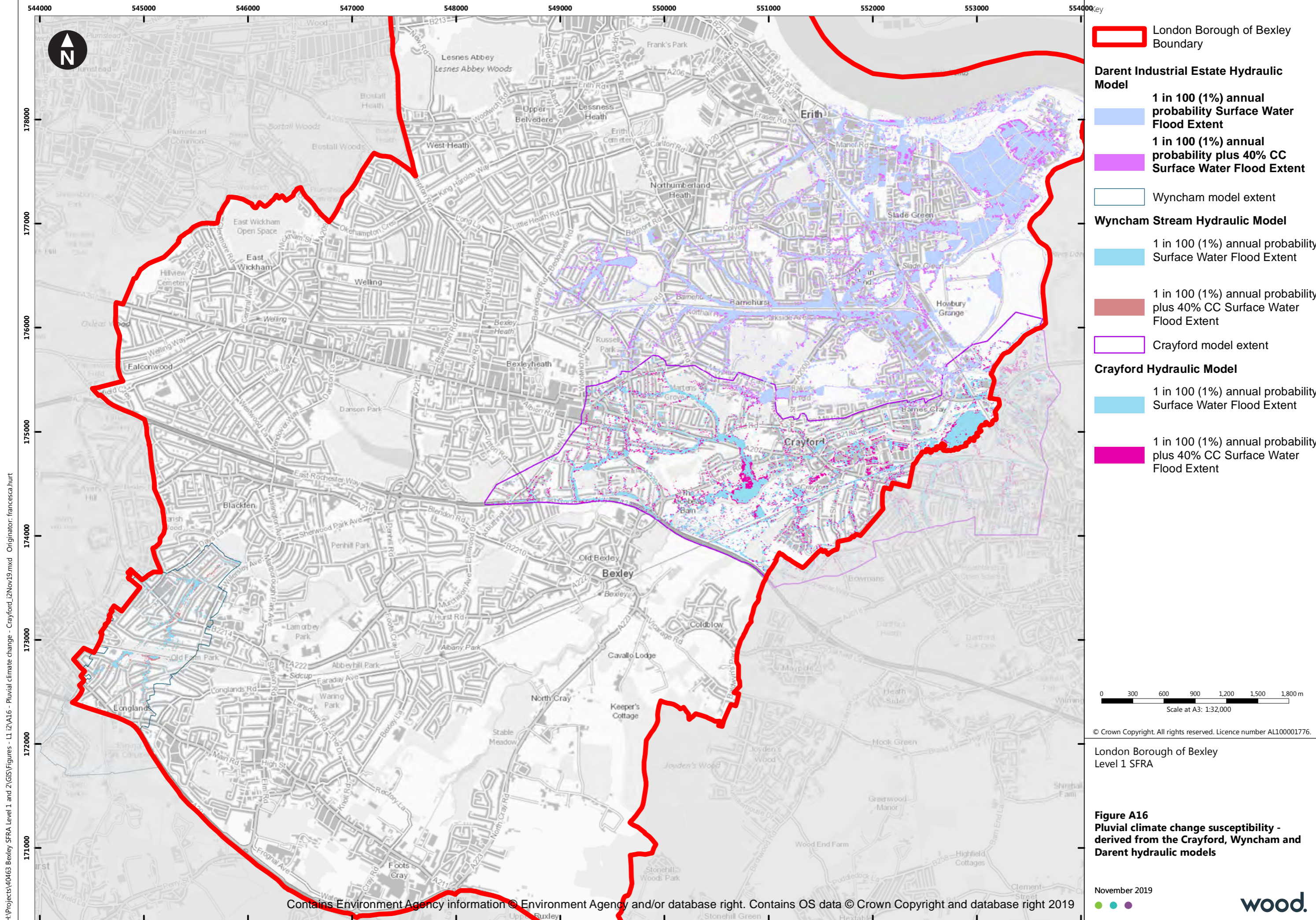


© Crown Copyright. All rights reserved. Licence number AL100001776.

London Borough of Bexley
Level 1 SFRA

Figure A15
Risk of flooding from reservoirs -
maximum depth

H:\Projects\40463 Bexley SFRA Level 1 and 2\GIS\Figures - L1\2\A15 - reservoir flood risk.mxd Originator: sam.bray



- London Borough of Bexley Boundary**
- London Borough of Bexley Boundary
- Darent Industrial Estate Hydraulic Model**
- 1 in 100 (1%) annual probability Surface Water Flood Extent
 - 1 in 100 (1%) annual probability plus 40% CC Surface Water Flood Extent
- Wyncham Stream Hydraulic Model**
- Wyncham model extent
 - 1 in 100 (1%) annual probability Surface Water Flood Extent
 - 1 in 100 (1%) annual probability plus 40% CC Surface Water Flood Extent
- Crayford Hydraulic Model**
- Crayford model extent
 - 1 in 100 (1%) annual probability Surface Water Flood Extent
 - 1 in 100 (1%) annual probability plus 40% CC Surface Water Flood Extent

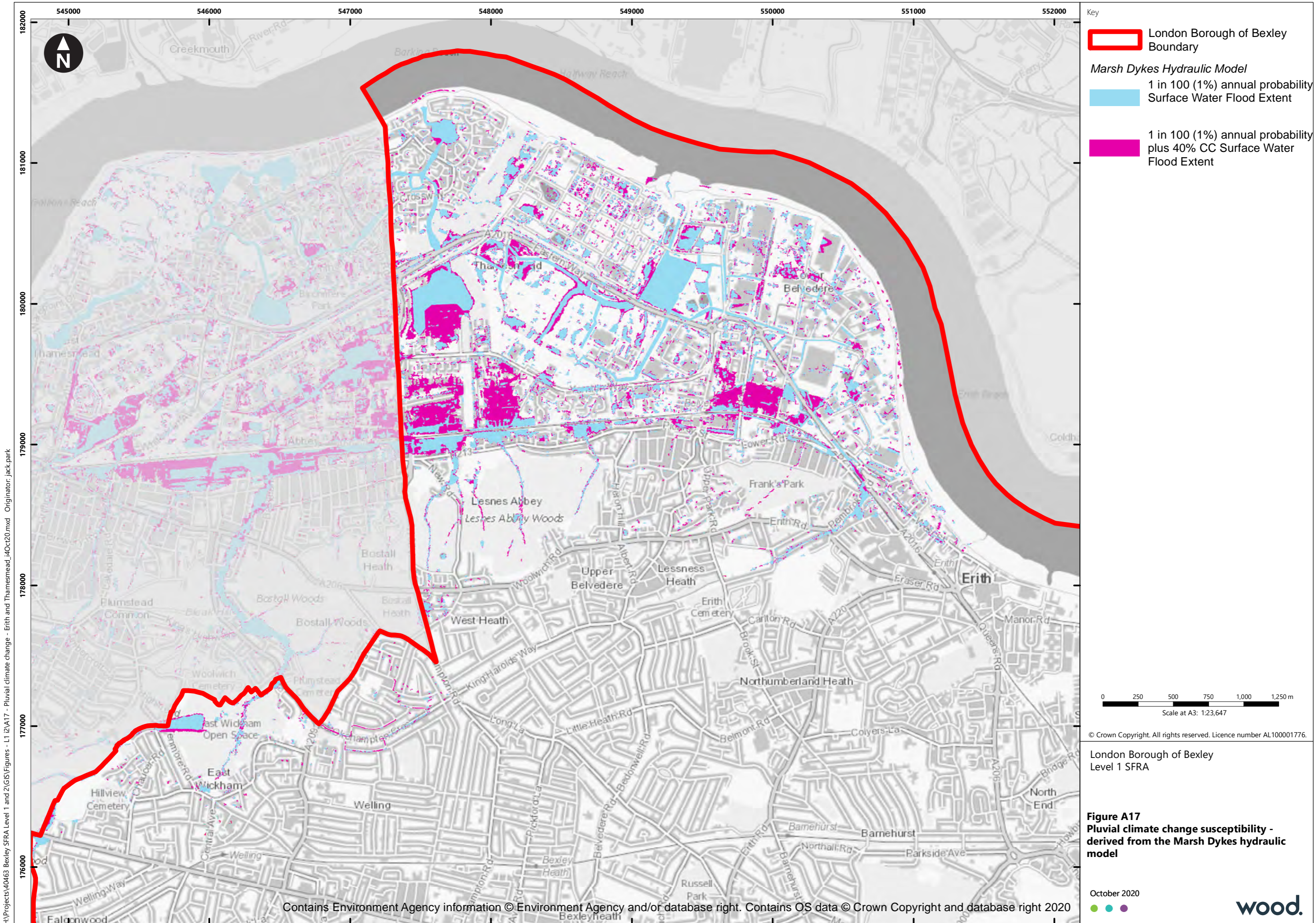
0 300 600 900 1200 1500 1800 m
Scale at A3: 1:32,000

© Crown Copyright. All rights reserved. Licence number AL100001776.

London Borough of Bexley
Level 1 SFRA

Figure A16
Pluvial climate change susceptibility -
derived from the Crayford, Wyncham and
Darent hydraulic models

H:\Projects\40463 Bexley SFRA Level 1 and 2\GIS\Figures - L1, L2\A16 - Pluvial climate change - Crayford_12Nov19.mxd Originator: francesca.hurt

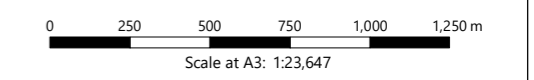


Key

- London Borough of Bexley Boundary

Marsh Dykes Hydraulic Model

- 1 in 100 (1%) annual probability Surface Water Flood Extent
- 1 in 100 (1%) annual probability plus 40% CC Surface Water Flood Extent

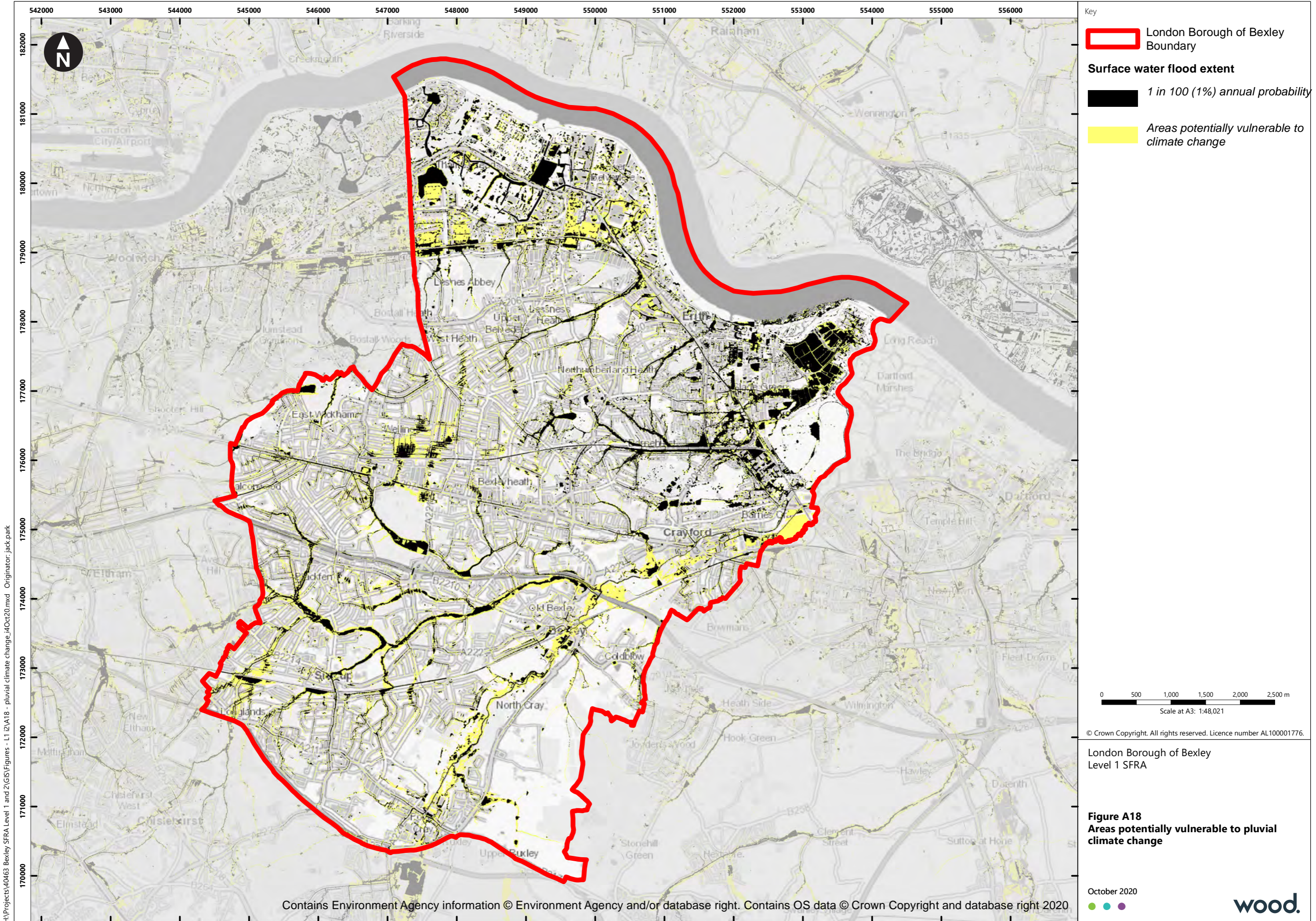


© Crown Copyright. All rights reserved. Licence number AL100001776.

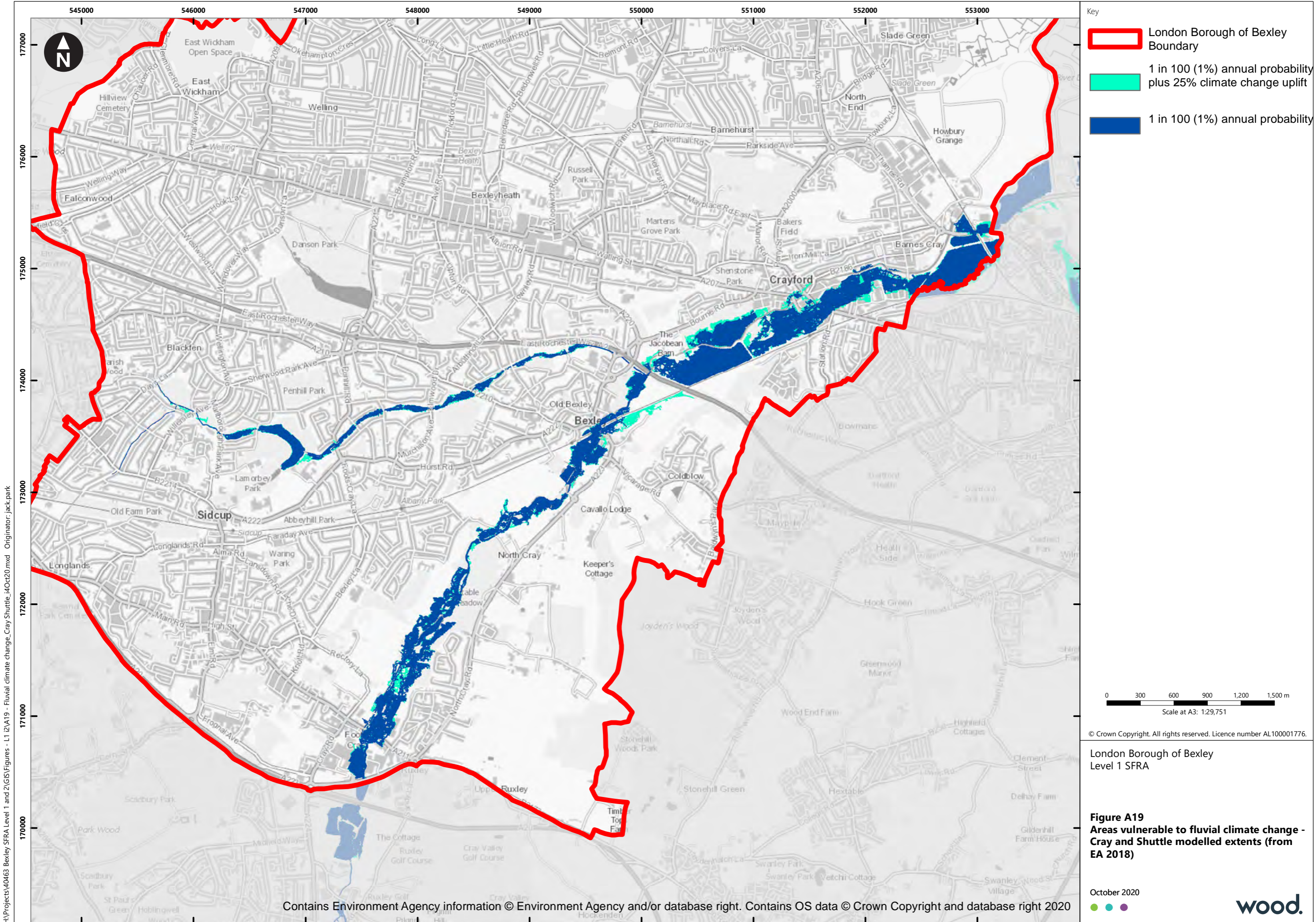
London Borough of Bexley
Level 1 SFRA

Figure A17
Pluvial climate change susceptibility - derived from the Marsh Dykes hydraulic model

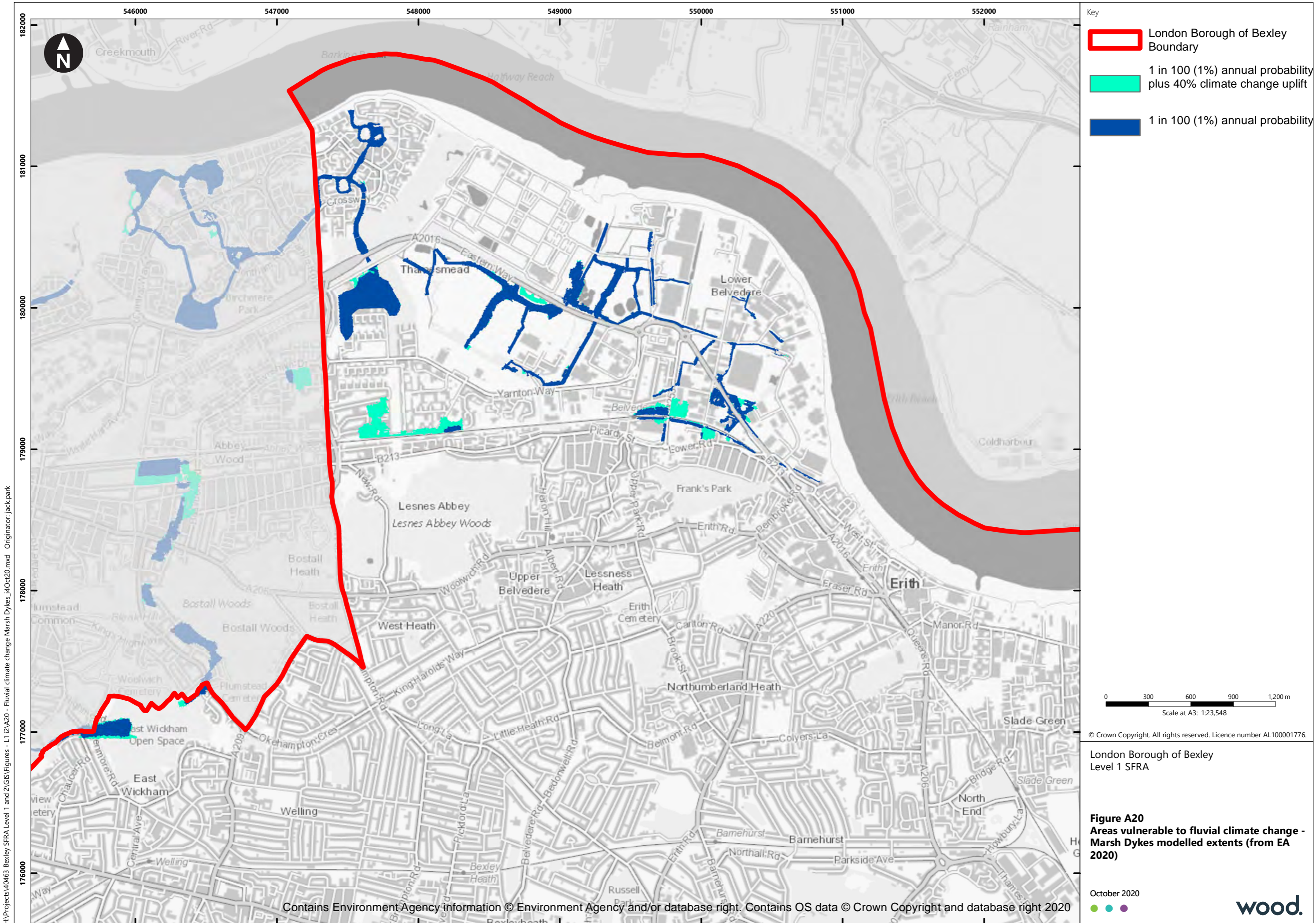
H:\Projects\40463 Bexley SFRA Level 1 and 2\GIS\Figures - L1\2\A17 - Pluvial climate change - Erith and Thameshead_idOct20.mxd Originator: jack.park



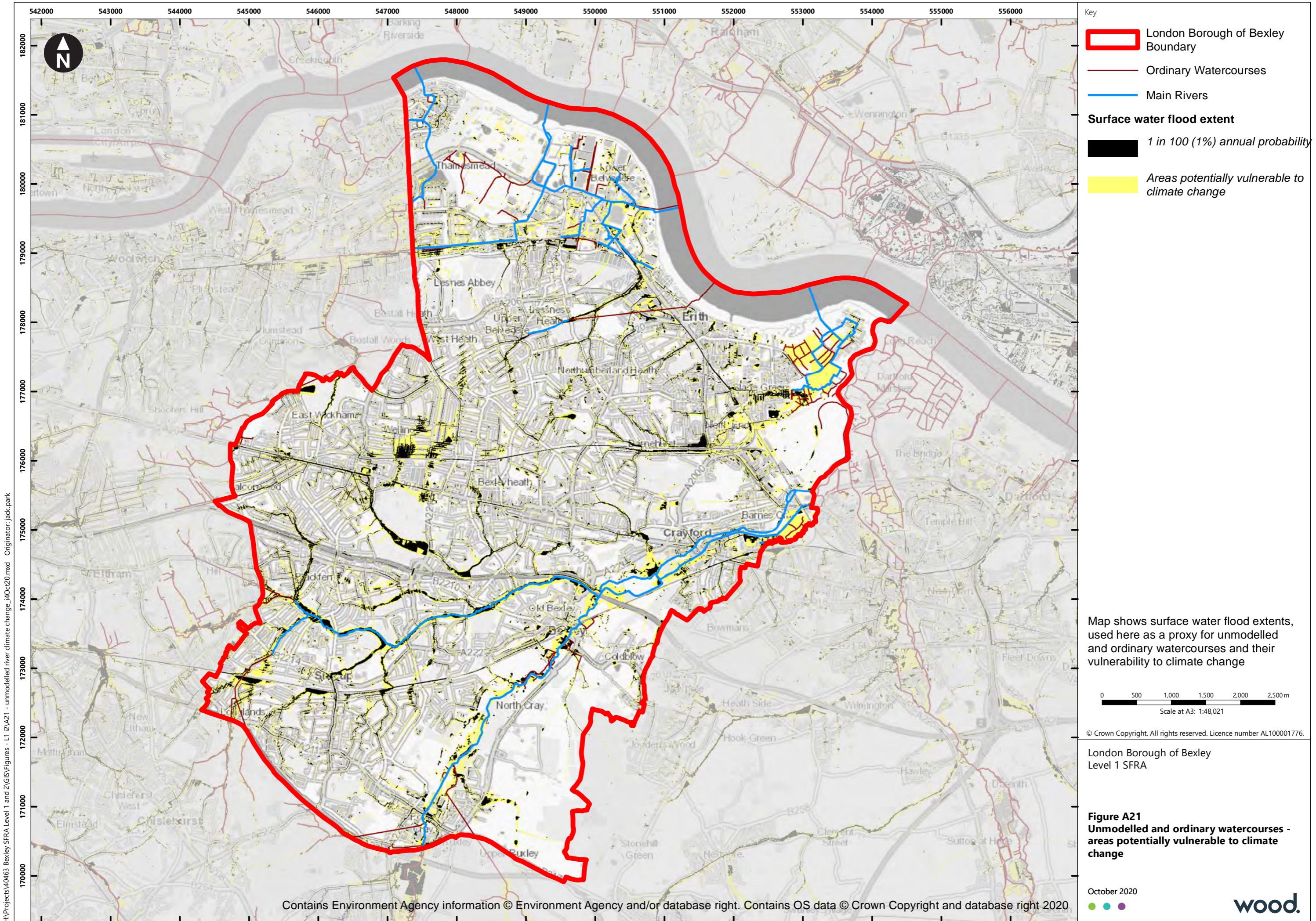
H:\Projects\40463 Bexley SFRA Level 1 and 2\GIS\Figures - L1\2\A18 - pluvial climate change_i4Oct20.mxd Originator: jack.park



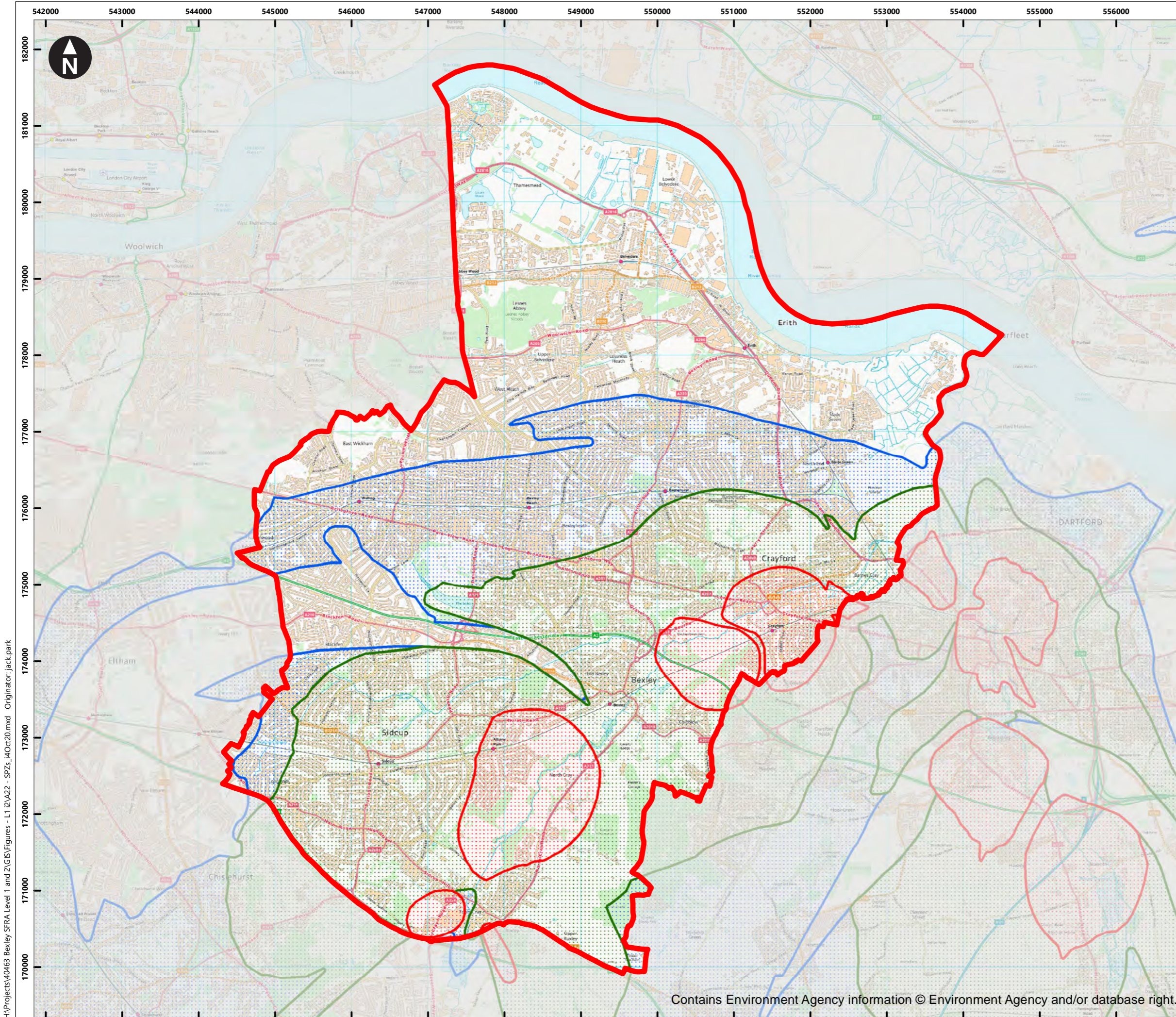
H:\Projects\40463 Bexley SFRA Level 1 and 2\GIS\Figures - L1 12\A19 - Fluvial climate change_Cray_Shuttle_i4Oct20.mxd Originator: jack.park



H:\Projects\40463 Bexley SFRA Level 1 and 2\GIS\Figures - L1\2\A20 - Fluvial climate change Marsh Dykes_i4Oct20.mxd Originator: jack.park



H:\Projects\40463 Bexley SFRA Level 1 and 2\GIS\Figures - L1\2\A21 - unmodelled river climate change_i40c20.mxd Originator: jack.park

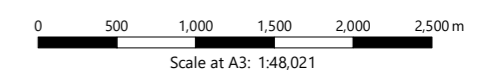


Key

- London Borough of Bexley Boundary

Source Protection Zones

- Zone I - Inner Protection Zone
- Zone II - Outer Protection Zone
- Zone III - Total Catchment



© Crown Copyright. All rights reserved. Licence number AL100001776.

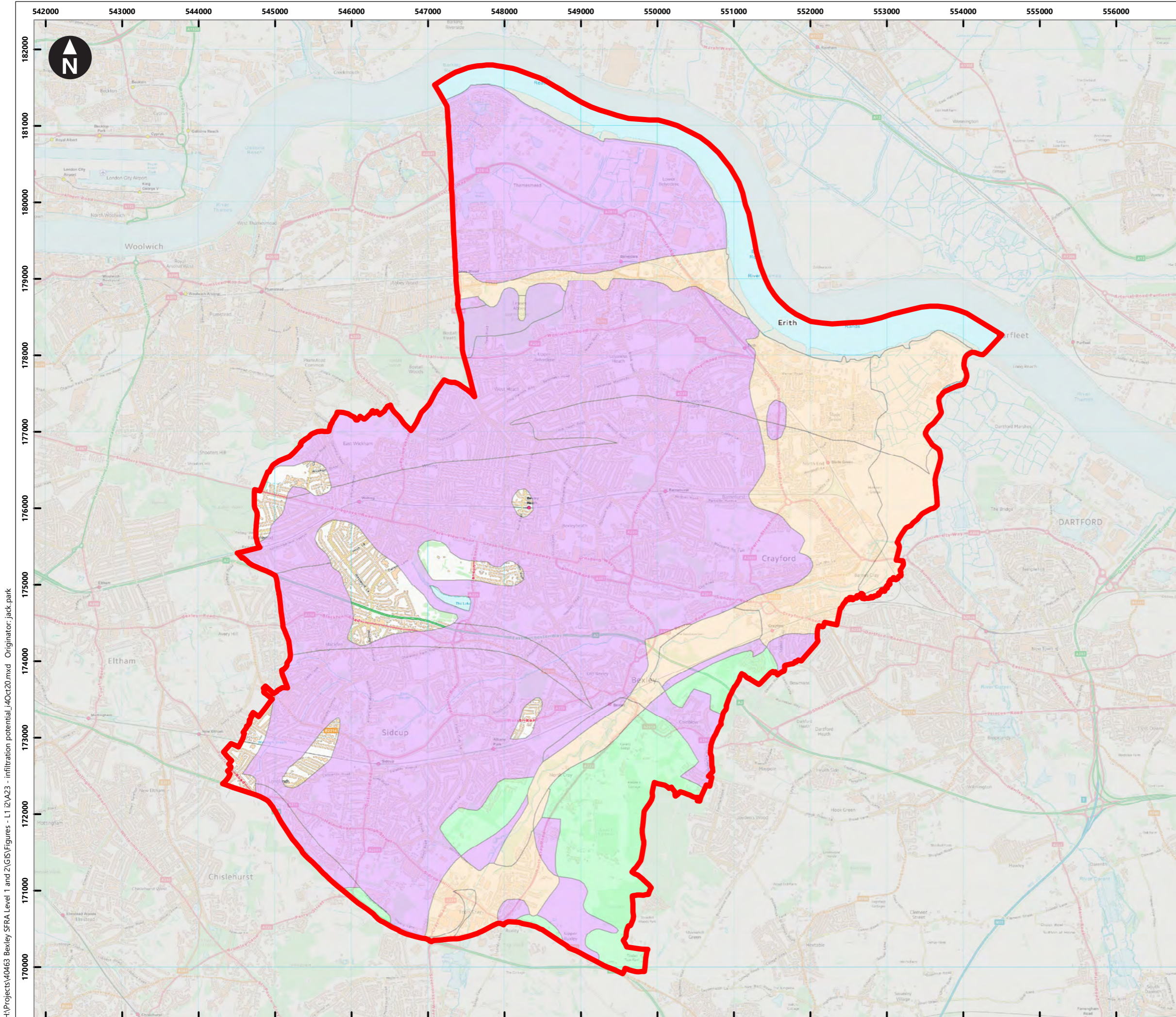
London Borough of Bexley
Level 1 SFRA

Figure A22
Source Protection Zones

October 2020



H:\Projects\40463 Bexley SFRA Level 1 and 2\GIS\Figures - L1\2\A22 - SPZs_14Oct20.mxd Originator: jack.park



Key

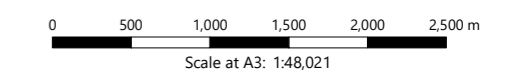
London Borough of Bexley Boundary

Infiltration Potential

High

Med

Low



© Crown Copyright. All rights reserved. Licence number AL100001776.

London Borough of Bexley
Level 1 SFRA

Figure A23
Infiltration potential

October 2020



H:\Projects\40463 Bexley SFRA Level 1 and 2\GIS\Figures - L1\2\A23 - infiltration potential_14Oct20.mxd Originator: jack.park