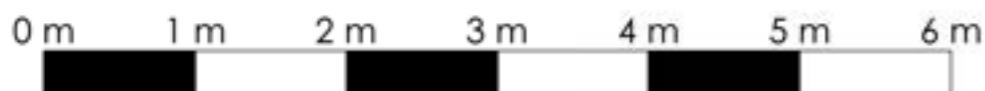
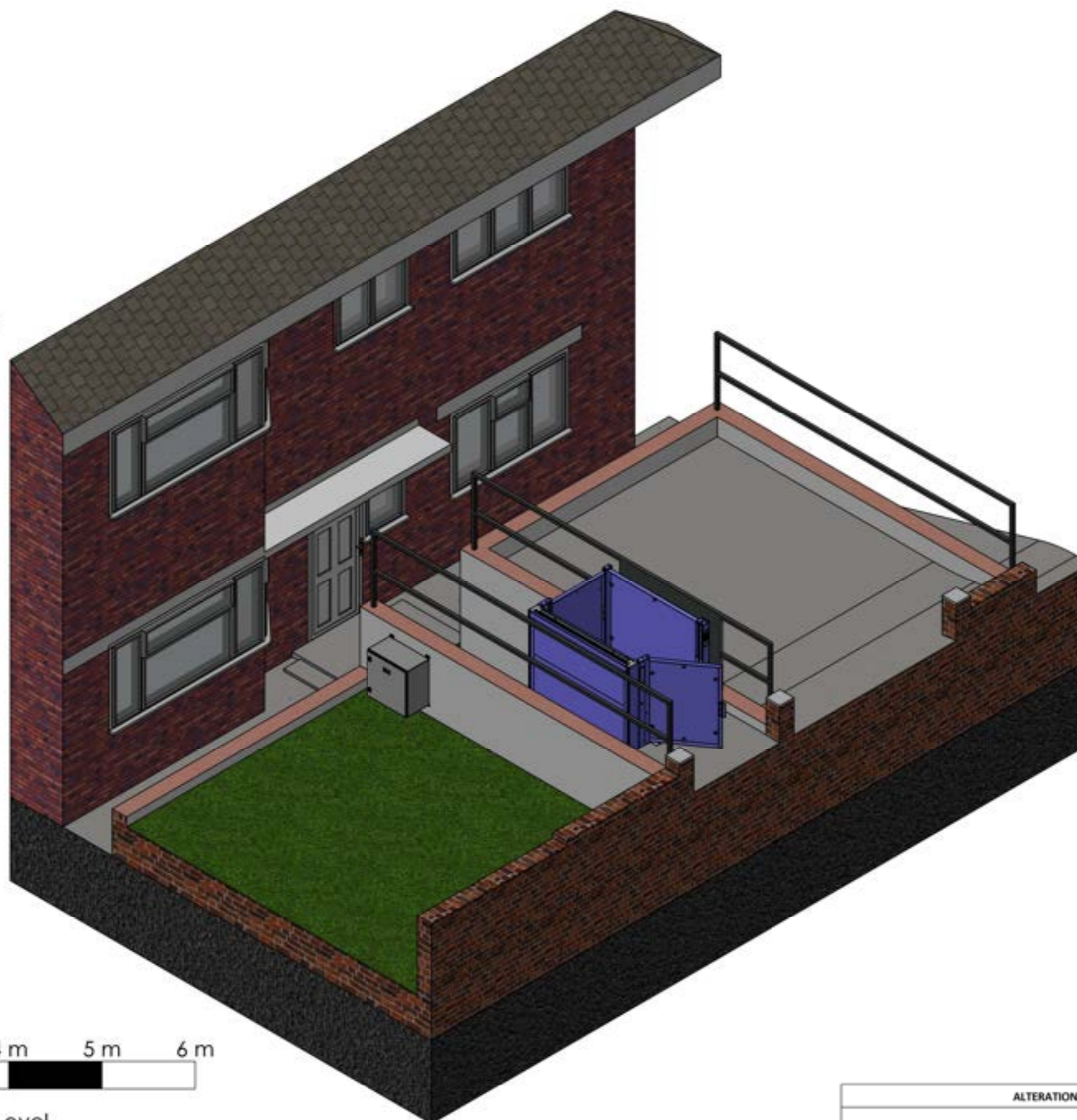




Remove All Sharp Edges
Do Not Scale
If In Doubt - Ask!

Proposed Isometric Elevation



Lift Shown At Upper Level

ALTERATION	ECO	INITIALS	DATE	REV
Initial Release		AP	30/01/2024	A

Original SKD1 Ref:	
Similar Item Ref:	
FILE LOCATION:	\\P:\Data\Output\Engineering\Planning\Permissions\10051 - 101 Regent Road



Wessex Lift Company Limited,
Budds Lane, Romsey, Hampshire,
SO51 0HA

THIS DRAWING IS THE PROPERTY OF WESSEX LIFT COMPANY LIMITED AND MAY NOT BE PUBLISHED, REPRODUCED OR USED FOR MANUFACTURE WITHOUT THE EXPRESS PERMISSION OF THE OWNERS IN WRITING.

(ROM Rev 1 of 20110511)

All dimensions are in mm unless otherwise stated.

TOLERANCES unless otherwise stated:
Decimal Places:
X = ±1
XX = ±0.25
XXX = ±0.13
ANGULAR: ±0.5°
Thread ISO Coarse Class G
Hole sizes = H11

DRAWN BY:	AP	DATE:	30/01/2024
MATERIAL:	Refer to details		
FINISH:	See Sales Spec.		
WEIGHT:	135356918.20		
SCALE:	1:50	Sheet Size	A3

TITLE:
PROPOSED PLANNING
PERMISSION OF AN EXTERNAL
STEPLIFT (LL800) AT 105
REGENT ROAD, B69 1TS

DWG NO:	PP-319228
Status:	SHEET 4 of 14