

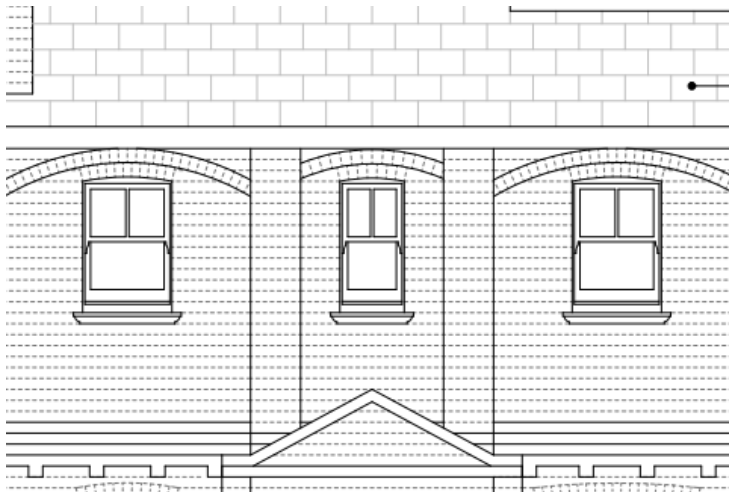
PROPOSED SASH WINDOW DETAILS TO FLAT 2, 39 KIRKSTALL ROAD

FRONT ELEVATION

Proposed windows to front facade, indicated with historical features of the area to be reinstated

1st Floor bathroom/kitchen windows (front)

1st Floor Living Room bay window 3x panels (front)



Low quality double-glazed windows in poor condition and dis-repair
To be replaced with solid wood double-glazed sash windows in same style as original features