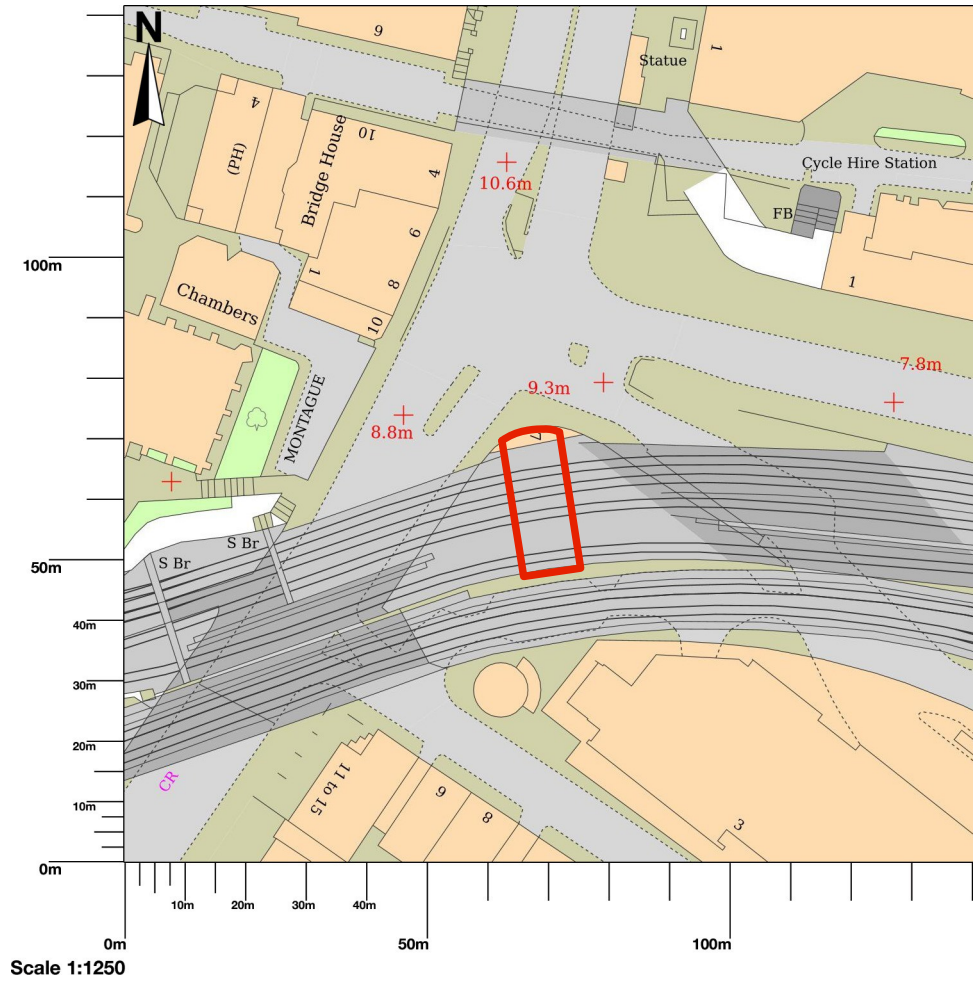
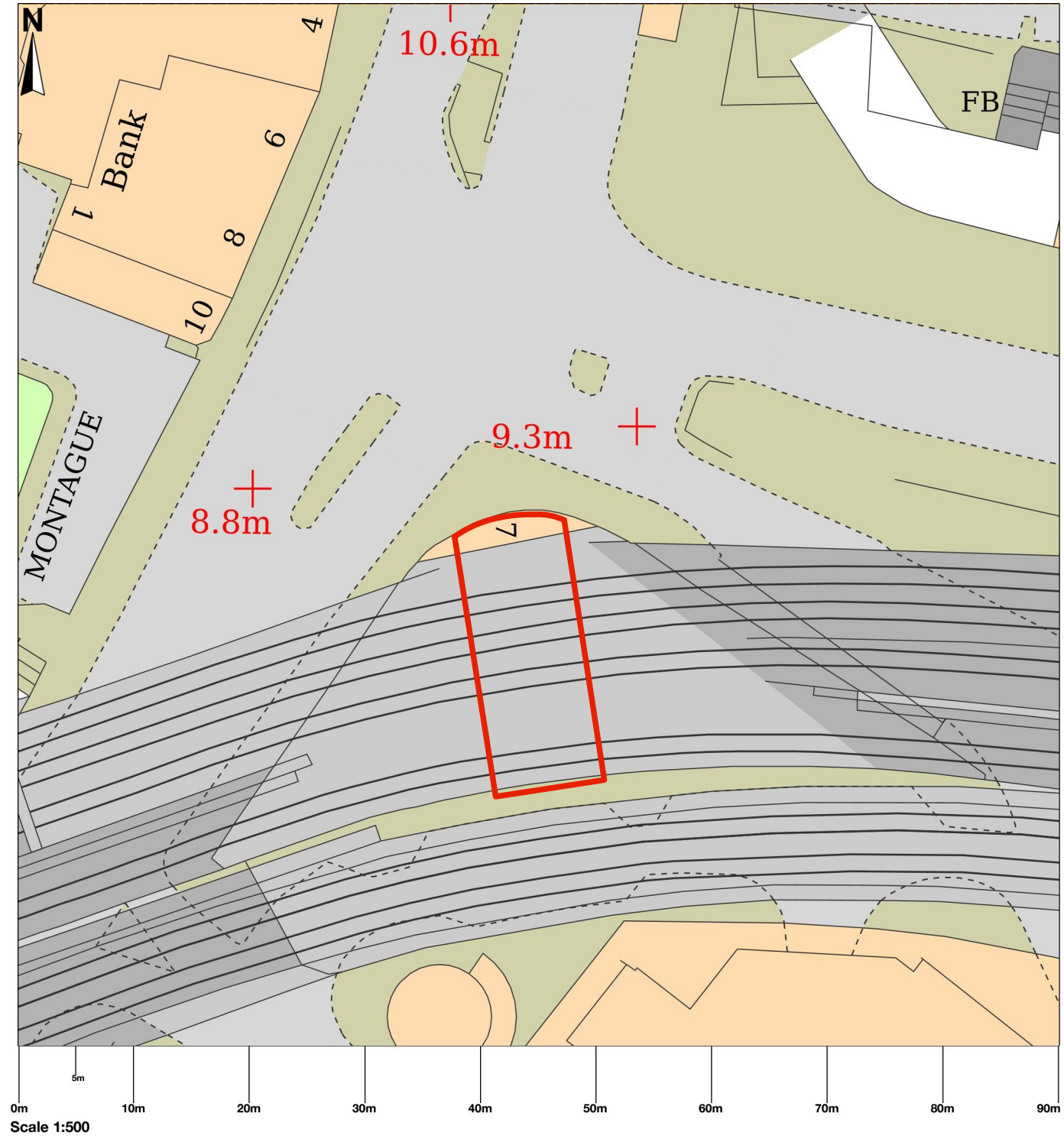


# 7 Borough High Street, London, SE1 9SU



# 7 Borough High Street, London, SE1 9SU



Do not scale off this drawing. Work from the indicated dimensions only. All site dimensions to be verified by Contractor and any discrepancies reported back to CADA Design Group Ltd.

Manufacturers must submit shop drawings and all finish samples prior to production for comment by Designer.

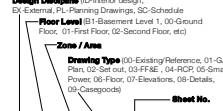
All dimensions in millimetres unless noted otherwise.

IF IN DOUBT, ASK

© 2024 - CADA Design Group Ltd.

- NOTES:
- This drawing is representative of design intent only and to be read in conjunction with CADA layouts elevations details schedules FF&E specifications where applicable.
  - Drawing to be read in colour.
  - CADA Design Group Ltd. does not accept responsibility for any errors and dimensions arising from the preparation of base built drawings, which are derived from original material provided by others, and whose accuracy is not CADA Design Group Ltd. responsibility prior to manufacture and installation.
  - Refer to the architect's drawings for base building information. All substrates, fixing details to be as architect's, proprietary manufacturer's and structural engineer's specifications.
  - All services shown i.e. mechanical, electrical, plumbing, lighting, fire, security, facade, catering and audio visual equipment are indicative only. Please read in conjunction with the consultant's drawings, details & specifications where applicable.
  - The Contractor is to supply or coordinate for designers comment shop drawings and setting out rods to fully illustrate methods of construction of all millwork, caseworks, cabinetry, joinery work and other specialist finishes and features. Contractor to supply samples for the designers comment prior to manufacture in cases where substrate effects final finished qualities, finishes should be submitted on intended final sub-structure.
  - Contractor to ensure that all works comply with relevant national and/or local authority statutory requirements and in accordance with local building control and codes of practice. Contractor to ensure all appropriate certifications are provided where required.
  - In advance of construction the contractor must confirm that the interior fitout is achievable together with the installed services and built structures.
  - All dimensions are to finished face unless specified noted otherwise.
  - Interior design documentation based on information provided by the client/architect. Main contractor is required to carry out full survey and provide shop drawings to co-ordinate information between interior design documentation and existing site conditions.

DRAWING NUMBERING



ID-00-01-01-01

Rev	Date	Description	By

**CADA DESIGN**  
 Suite 4, 9 Bell Yard Mews, London SE1 3UY  
 T +44 (0)20 7234 9700  
 cada.co.uk

Drawing Status: **DESIGN INTENT**  
 Client: **GKSS LTD**  
 Project Title: **OSEYO LONDON BRIDGE**  
 Drawing Title: **SITE PLAN**

Scale	Sheet Size	Date	Drawn	Checked
VARIES	A3	05.02.24	PM	CH
Job No.	Drawing No.	Revision		
11869	ID-00-00-07-00	-		