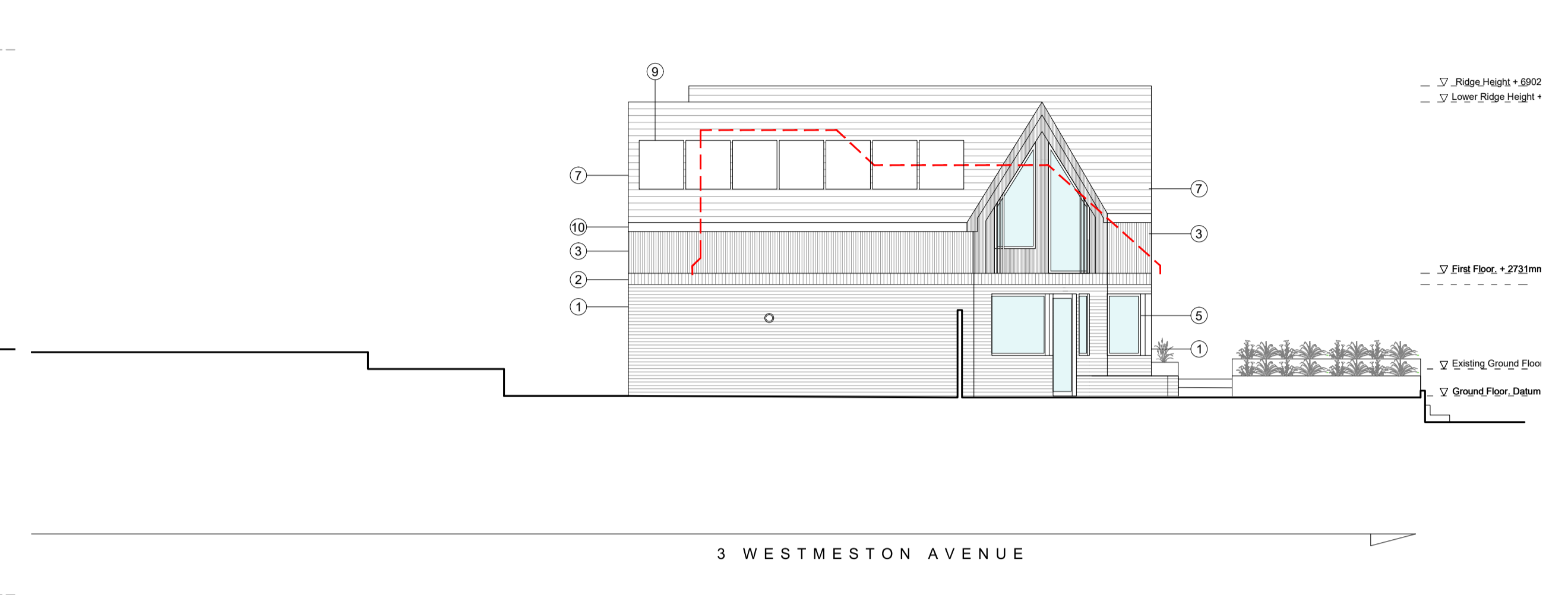
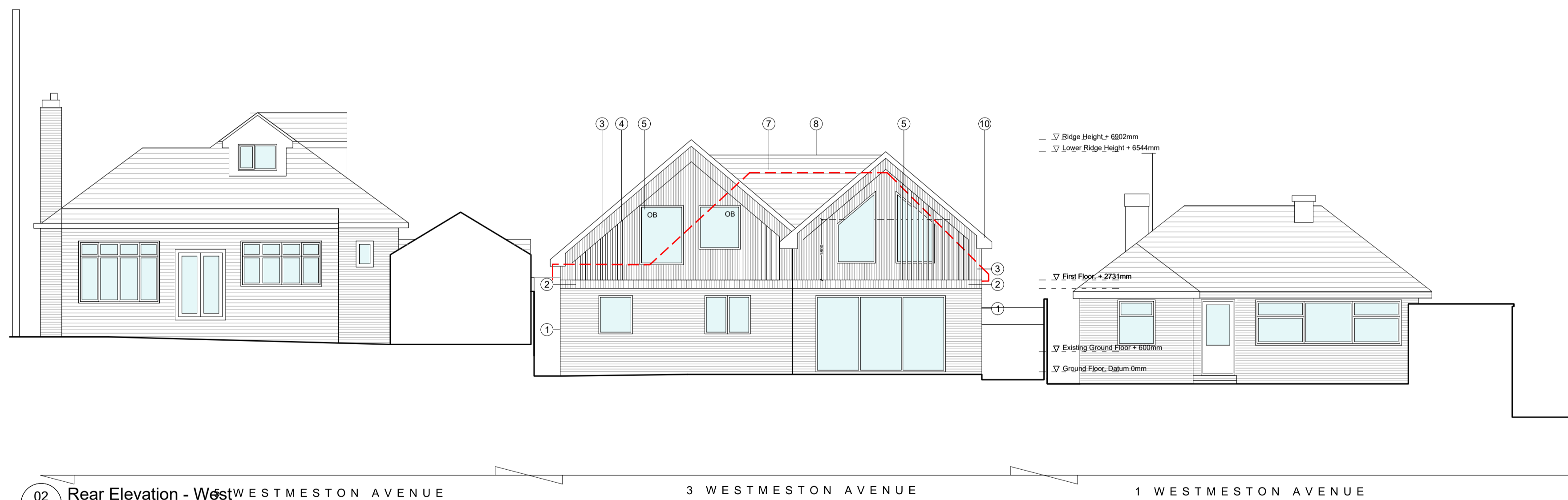


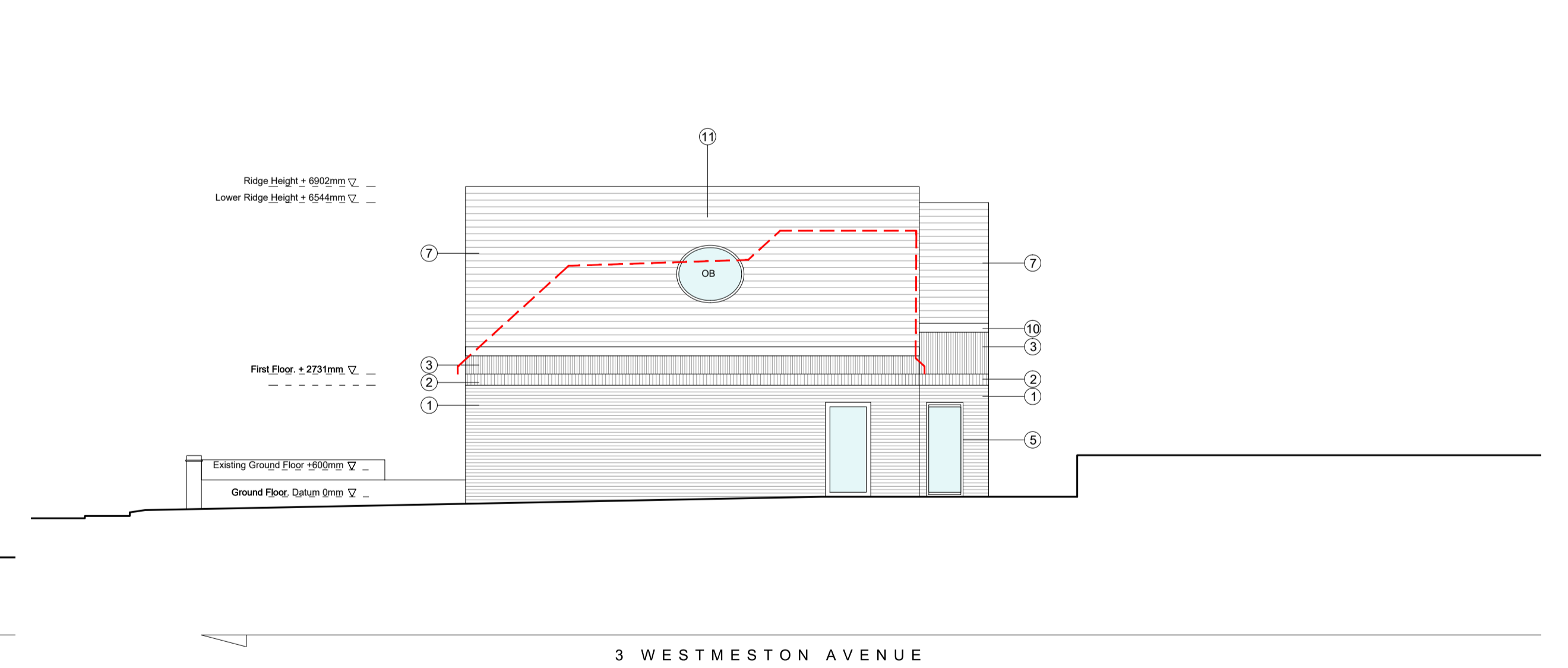
01 Front Elevation - East
Scale: 1:100



03 Side Elevation - South
Scale: 1:100



02 Rear Elevation - West
Scale: 1:100



04 Side Elevation - North
Scale: 1:100

MATERIAL KEY

1. Red brick to match existing
2. Red brick soldier course
3. Vertical black timber cladding
4. Vertical cedar fins
5. Black UPVC triple glazed windows/doors
6. Juliet Balcony
7. Roof tiles
8. Flat roof
9. Solar Panels
10. Black soffit and fascias



05 Visual of proposal within street scene
Scale: N/S

EN ARCHITECTS
 e office@enarchitects.co.uk
 w www.enarchitects.co.uk
 t 07954585642

PLANNING

DATE	REVISION	CHK	LOCATION
			3 WESTMESTON AVENUE
			PROPOSED ELEVATIONS
job ref	NUMBER	REV	SCALE
109	160	G	1:100@A1

