

ELEVATIONS VIEWED FROM OUTSIDE

SYSTEM

ROOFLIGHT MANUFACTURED FROM 3.5mm THICK MILD STEEL SHEET CURB PRESSINGS AND 3mm THICK MILD STEEL SHEET VENT PRESSINGS

CORNERS MITRED AND FULLY WELDED

FINISH

POLYZINC 770 AFTER ALL FABRICATION.
POWDER COATED TO BS6497 / BS EN 13438
POLYESTER POWDER COATED RAL 9005 (BLACK) MATT

HARDWARE & ATTACHMENTS

1PAIR, WELD-ON HINGES
FITTED WITH WELDED MOUNTING PLATES TO FRAME AND VENT PROFILES TO ACCOMODATE VENT OPERATOR.

GLAZING

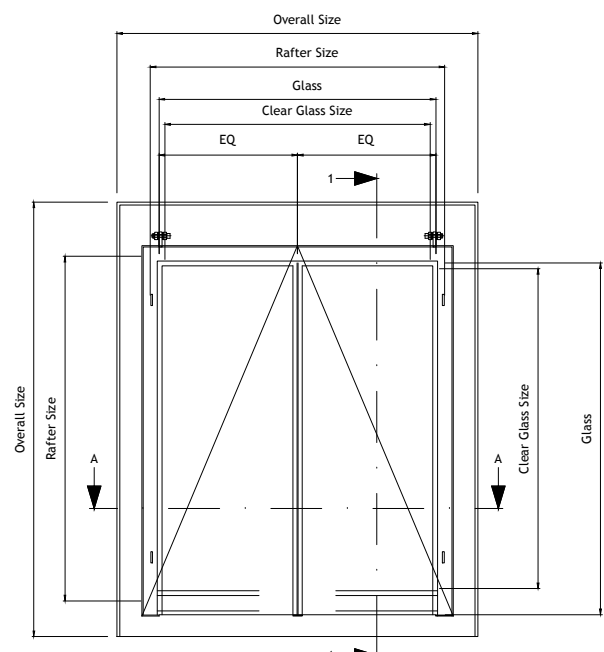
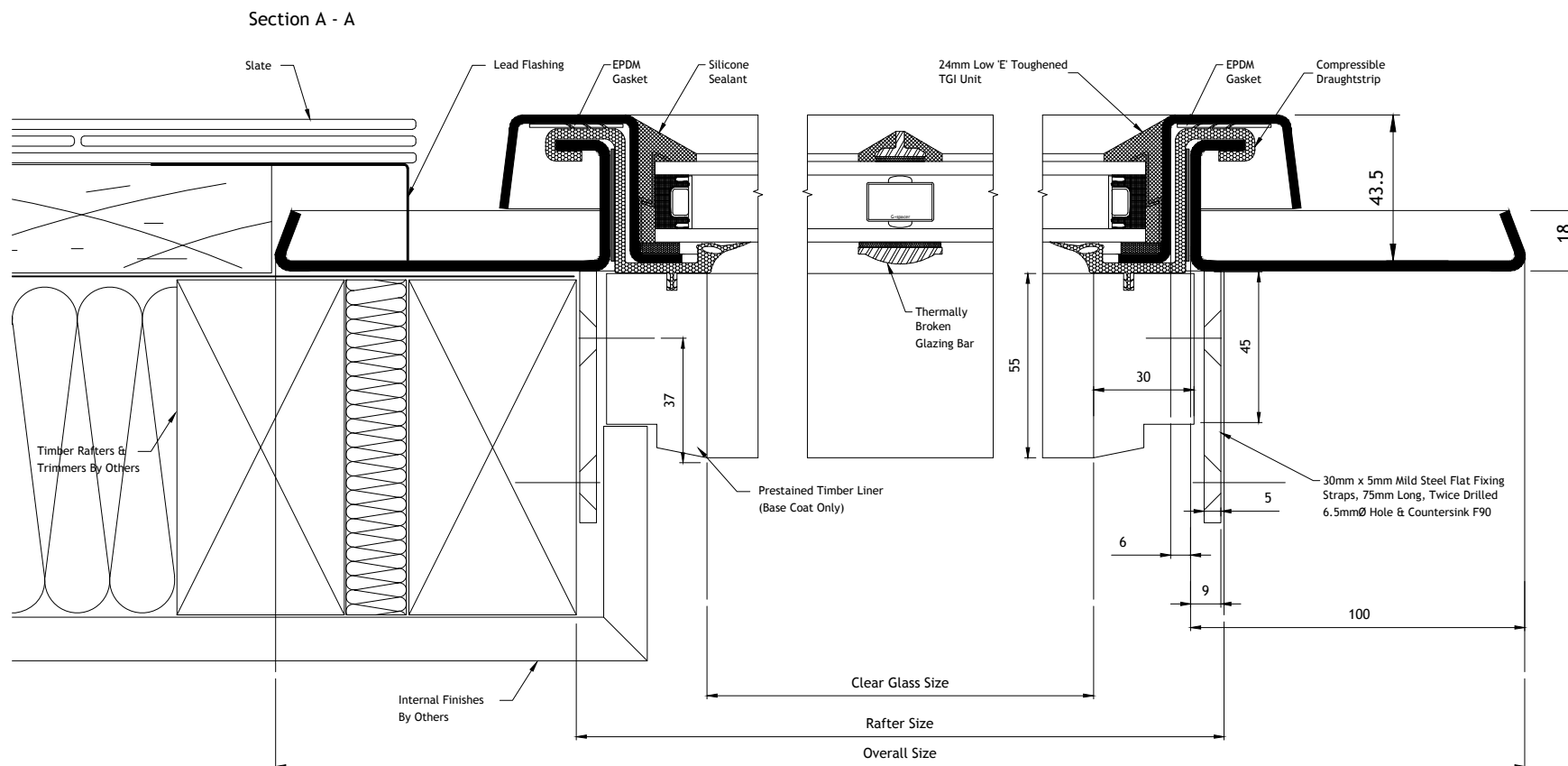
PREPARED FOR & SUPPLIED WITH CLEMENT 24mm SEALED UNITS, WITH STEPPED BOTTOM EDGE; WITH SILICONE SEALANT

SPACER BAR - SILVER
SILICONE CAPPING - BLACK.
PERIMETER POINTING - BLACK.

GLASS SPECIFICATION:-

OUTER - 4mm TOUGHENED BIOCLEAN II (SELF CLEANING GLASS)
CAVITY - 16mm ARGON
INNER - 4mm TOUGHENED THERMOFLOAT (STEPPED BACK AT BOTTOM BY 55mm)

DIM CHART	Overall Size W x H	Aperture Size W x H	Between Timber Trimmers W x H
Clement 0	590 x 752	332 x 444	410 x 504
Clement 1	668 x 870	410 x 562	488 x 622
Clement 2	668 x 1021	410 x 713	488 x 773
Clement 3	818 x 1169	560 x 861	638 x 921
Clement 4	972 x 1169	714 x 861	792 x 921
Clement 5	1124 x 1501	866 x 1193	944 x 1253
Clement 6	818 x 1804	560 x 1496	638 x 1556
Clement SH	960 x 1270	652 x 962	730 x 1022



Copyright Reserved 2013
CLEMENT WINDOWS LTD
This product is protected by the provisions of the Copyright, Design & Patents Act 1988
This drawing is the property of Clement Windows Ltd.
It is forbidden to copy, reproduce or use these details in any way (including transfer to another party) without the express authority/permission of Clement Windows Ltd in writing.

- NOTES**
- DO NOT SCALE
 - PLEASE NOTE THAT ALL PRODUCT ARE SUBJECT TO MANUFACTURING TOLERANCE OF +0mm / -2mm

DATE	REV	INT	COMMENTS
08/09/14	G	KR	General Update Type References Amended, Glass Specification Updated
01/05/11	F	EB	General Revisions And Corrections
06/10/09	E	-	General Revisions And Corrections
01/10/09	D	-	General Revisions And Corrections
08/08/06	C	-	General Revisions And Corrections
28/06/06	B	-	General Revisions And Corrections
25/04/06	A	-	General Revisions To Details

DATE	REV	INT	COMMENTS
------	-----	-----	----------

REVISIONS

For Information

Drawing Title
CLEMENT CONSERVATION ROOFLIGHT
SLATE APPLICATION
HORIZONTAL SECTION
SHEET 1 OF 2

Project/Site

Contractor/Client
ROOFLIGHT DEPARTMENT

Architect

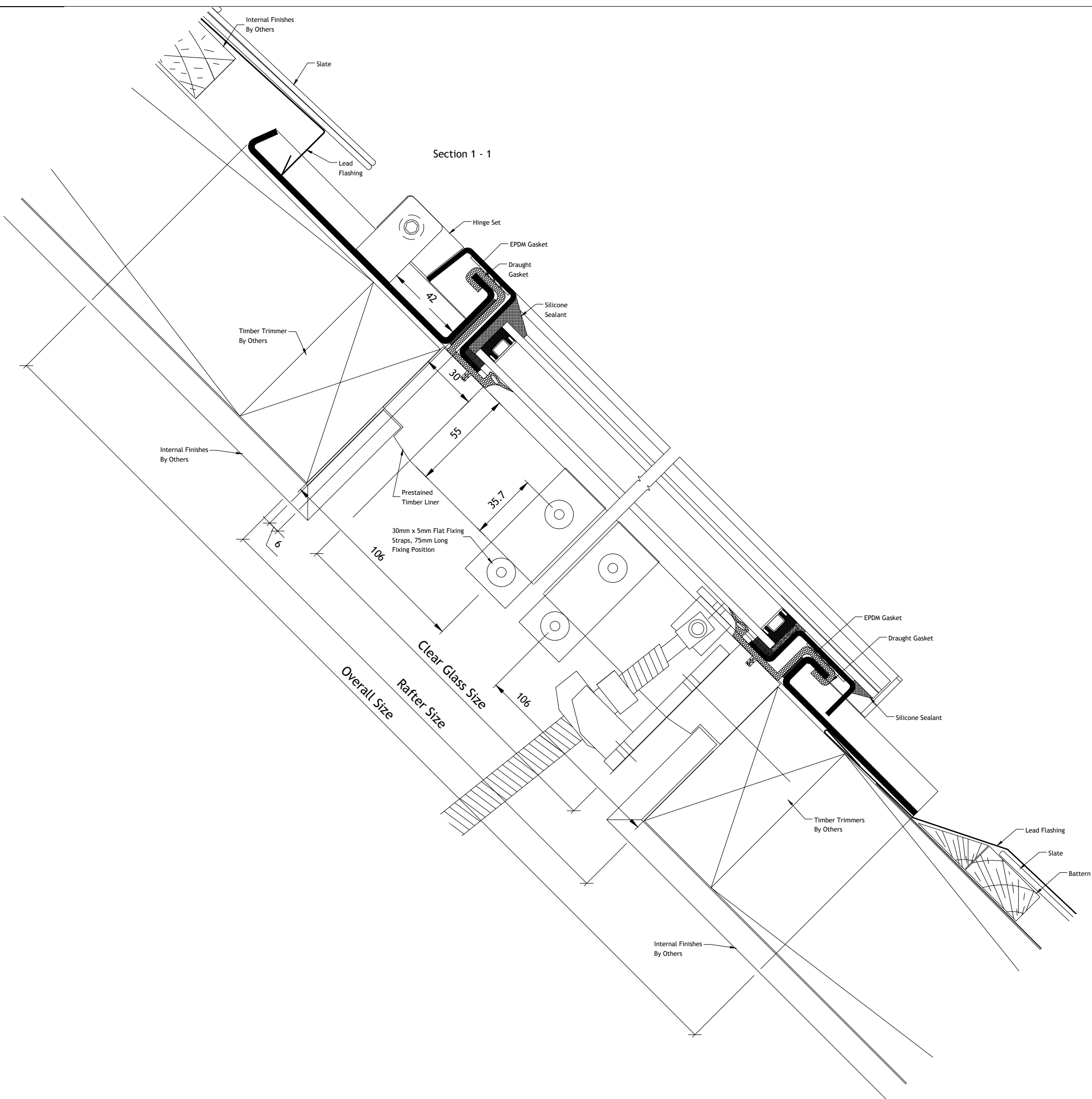
Scale @ A1: 1:1 & 1:10
Date: 04/06
Drawn By: -
Checked by: -

CLEMENT
Clement House
Haslemere
Surrey, GU27 1HR
Tel: 01428 643393
Fax: 01428 644436
E-mail: info@clementwg.co.uk

Drawing No.	Revision
D-CRPM-01	G

Copyright Reserved 2013
 CLEMENT WINDOWS LTD
 This product is protected by the provisions of the Copyright, Design & Patents Act 1988
 This drawing is the property of Clement Windows Ltd.
 It is forbidden to copy, reproduce or use these details in any way (including transfer to another party) without the express authority/permission of Clement Windows Ltd in writing.

- NOTES**
- DO NOT SCALE
 - PLEASE NOTE THAT ALL PRODUCT ARE SUBJECT TO MANUFACTURING TOLERANCE OF +0mm / -2mm



DATE	REV	INT	COMMENTS
08/09/14	G	KR	General Update Type References Amended, Glass Specification Updated
01/05/11	F	EB	General Revisions And Corrections
06/10/09	E	-	General Revisions And Corrections
01/10/09	D	-	General Revisions And Corrections
08/08/06	C	-	General Revisions And Corrections
28/06/06	B	-	General Revisions And Corrections
25/04/06	A	-	General Revisions To Details

DATE	REV	INT	COMMENTS
REVISIONS			

For Information

Drawing Title
 CLEMENT CONSERVATION ROOFLIGHT
 SLATE APPLICATION
 VERTICAL SECTION
 SHEET 2 OF 2

Project/Site

Contractor/Client
 ROOFLIGHT DEPARTMENT

Architect

Scale @ A1: 1:1 & 1:10 **Drawn By:** KR
Date: 04/06 **Checked by:** -

CLEMENT

Clement House
 Haslemere
 Surrey, GU27 1HR
 Tel: 01428 643393
 Fax: 01428 644436
 E-mail: info@clementwg.co.uk

Drawing No.	Revision
D-CRPM-02	G

ELEVATIONS VIEWED FROM OUTSIDE

SYSTEM

ROOFLIGHT MANUFACTURED FROM 3.5mm THICK MILD STEEL SHEET CURB PRESSINGS AND 3mm THICK MILD STEEL SHEET VENT PRESSINGS

CORNERS MITRED AND FULLY WELDED

FINISH

POLYZINC 770 AFTER ALL FABRICATION.
POWDER COATED TO BS6497 / BS EN 13438
POLYESTER POWDER COATED RAL 9005 (BLACK) MATT

HARDWARE & ATTACHMENTS

1PAIR, WELD-ON HINGES
FITTED WITH WELDED MOUNTING PLATES TO FRAME AND VENT PROFILES TO ACCOMMODATE VENT OPERATOR.

GLAZING

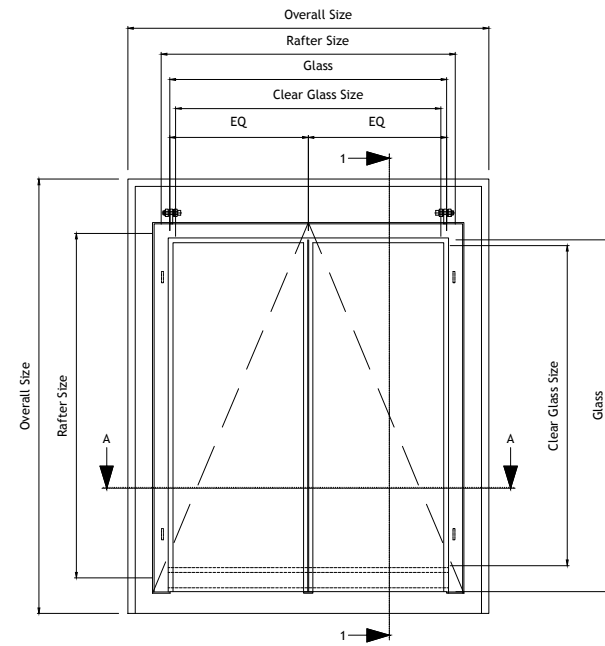
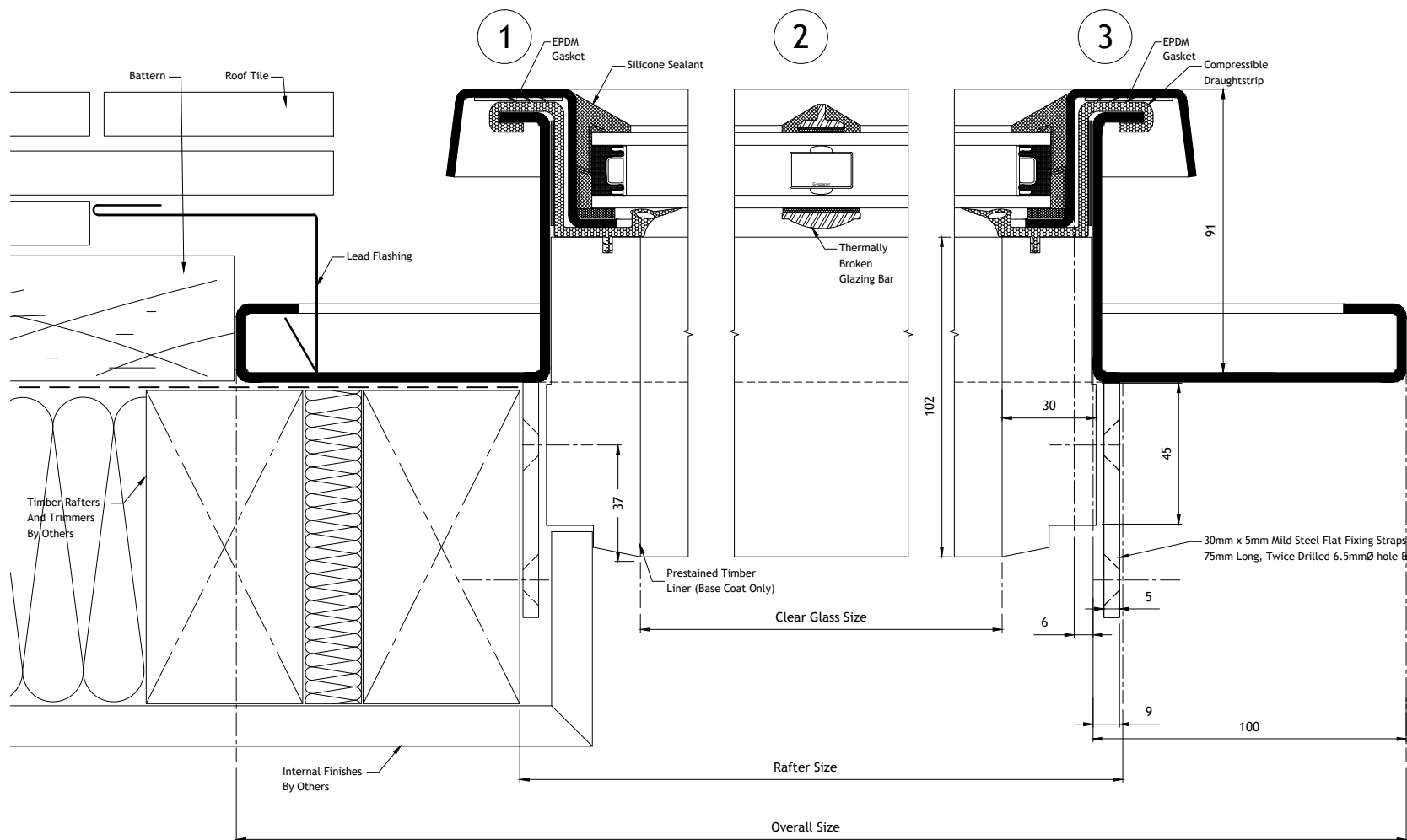
PREPARED FOR & SUPPLIED WITH CLEMENT 24mm SEALED UNITS, WITH STEPPED BOTTOM EDGE; WITH SILICONE SEALANT

SPACER BAR - SILVER
SILICONE CAPPING - BLACK.
PERIMETER POINTING - BLACK.

GLASS SPECIFICATION:-

OUTER - 4mm TOUGHENED BIOCLEAR II (SELF CLEANING GLASS)
CAVITY - 16mm ARGON
INNER - 4mm TOUGHENED THERMOFLOAT (STEPPED BACK AT BOTTOM BY 55mm)

DIM CHART	Overall Size W x H	Aperture Size W x H	Between Timber Trimmers W x H
Clement 0	590 x 752	332 x 444	410 x 504
Clement 1	668 x 870	410 x 562	488 x 622
Clement 2	668 x 1021	410 x 713	488 x 773
Clement 3	818 x 1169	560 x 861	638 x 921
Clement 4	972 x 1169	714 x 861	792 x 921
Clement 5	1124 x 1501	866 x 1193	944 x 1253
Clement 6	818 x 1804	560 x 1496	638 x 1556
Clement SH	960 x 1270	652 x 962	730 x 1022



Copyright Reserved 2013
CLEMENT WINDOWS LTD
This product is protected by the provisions of the Copyright, Design & Patents Act 1988
This drawing is the property of Clement Windows Ltd.
It is forbidden to copy, re-produce or use these details in any way (including transfer to another party) without the express authority/permission of Clement Windows Ltd in writing.

- NOTES**
- DO NOT SCALE
 - PLEASE NOTE THAT ALL PRODUCT ARE SUBJECT TO MANUFACTURING TOLERANCE OF +0mm / -2mm

DATE	REV	INT	COMMENTS
08/09/14	G	KR	General Update Type References Amended, Glass Specification Updated
01/05/11	F	EB	General Revisions And Corrections
06/10/09	E	-	General Revisions And Corrections
01/10/09	D	-	General Revisions And Corrections
08/08/06	C	-	General Revisions And Corrections
28/06/06	B	-	General Revisions And Corrections
25/04/06	A	-	General Revisions To Details

DATE	REV	INT	COMMENTS
------	-----	-----	----------

REVISIONS

For Information

Drawing Title
CLEMENT CONSERVATION ROOFLIGHT
TILE APPLICATION
HORIZONTAL SECTION
SHEET 1 OF 2

Project/Site

Contractor/Client
ROOFLIGHT DEPARTMENT

Architect

Scale @ A1: 1:1 & 1:10 **Drawn By:** -

Date: 04/06 **Checked by:** -

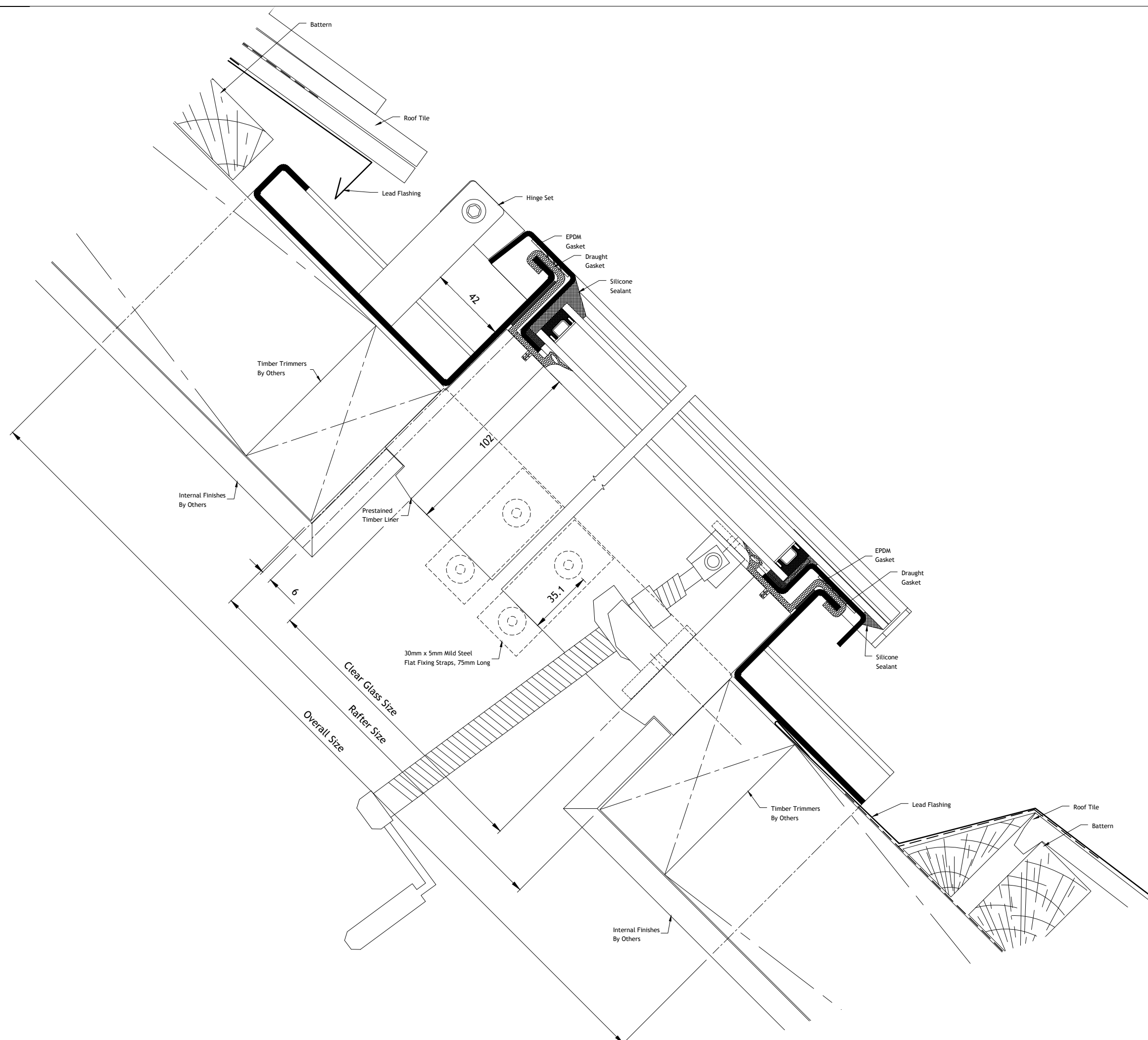
CLEMENT

Clement House
Haslemere
Surrey, GU27 1HR
Tel: 01428 643393
Fax: 01428 644436
E-mail: info@clementwg.co.uk

Drawing No.	Revision
D-CRPM-03	G

Copyright Reserved 2013
 CLEMENT WINDOWS LTD
 This product is protected by the provisions of the Copyright, Design & Patents Act 1988
 This drawing is the property of Clement Windows Ltd.
 It is forbidden to copy, reproduce or use these details in any way (including transfer to another party) without the express authority/permission of Clement Windows Ltd in writing.

- NOTES**
- DO NOT SCALE
 - PLEASE NOTE THAT ALL PRODUCT ARE SUBJECT TO MANUFACTURING TOLERANCE OF +0mm / -2mm



DATE	REV	INT	COMMENTS
08/09/14	G	KR	General Update Type References Amended, Glass Specification Updated
01/05/11	F	EB	General Revisions And Corrections
06/10/09	E	-	General Revisions And Corrections
01/10/09	D	-	General Revisions And Corrections
08/08/06	C	-	General Revisions And Corrections
28/06/06	B	-	General Revisions And Corrections
25/04/06	A	-	General Revisions To Details

DATE	REV	INT	COMMENTS
------	-----	-----	----------

REVISIONS

For Information

Drawing Title
 CLEMENT CONSERVATION ROOFLIGHT
 TILE APPLICATION
 HORIZONTAL SECTION
 SHEET 2 OF 2

Project/Site

Contractor/Client
 ROOFLIGHT DEPARTMENT

Architect

Scale @ A1: 1:1 & 1:10 **Drawn By:** -

Date: 04/06 **Checked by:** -

CLEMENT

Clement House
 Haslemere
 Surrey, GU27 1HR
 Tel: 01428 643393
 Fax: 01428 644436
 E-mail: info@clementwg.co.uk

Drawing No.	Revision
D-CRPM-04	G