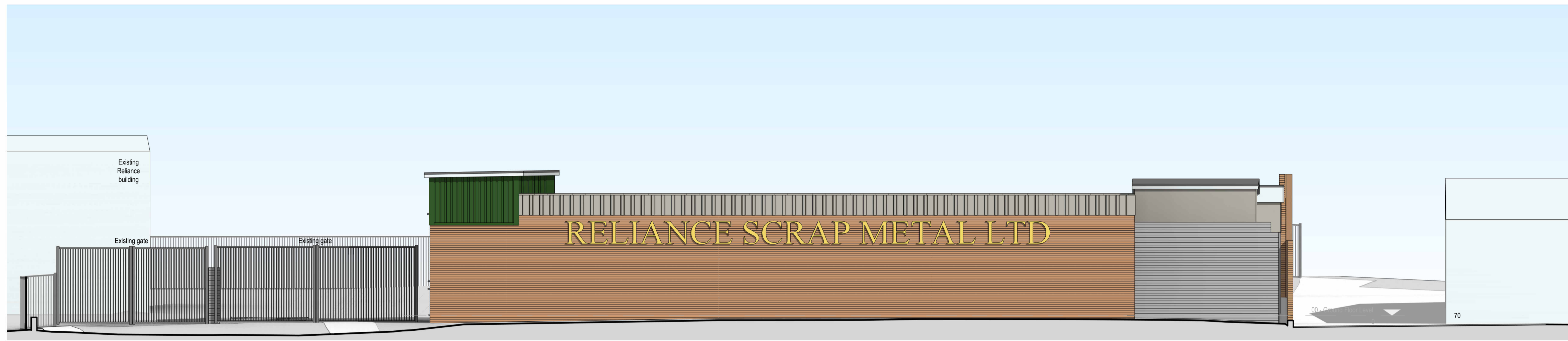
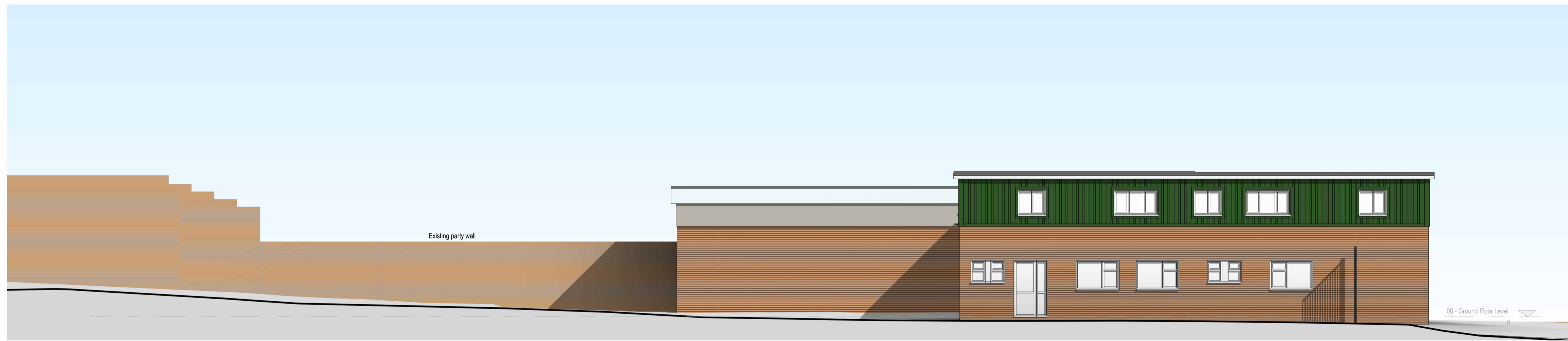


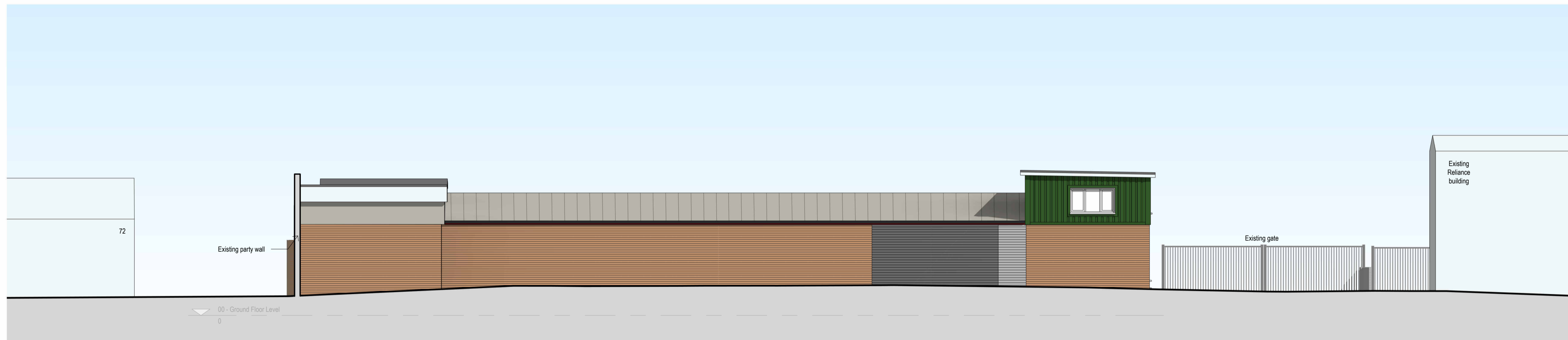
West Elevation
1:100



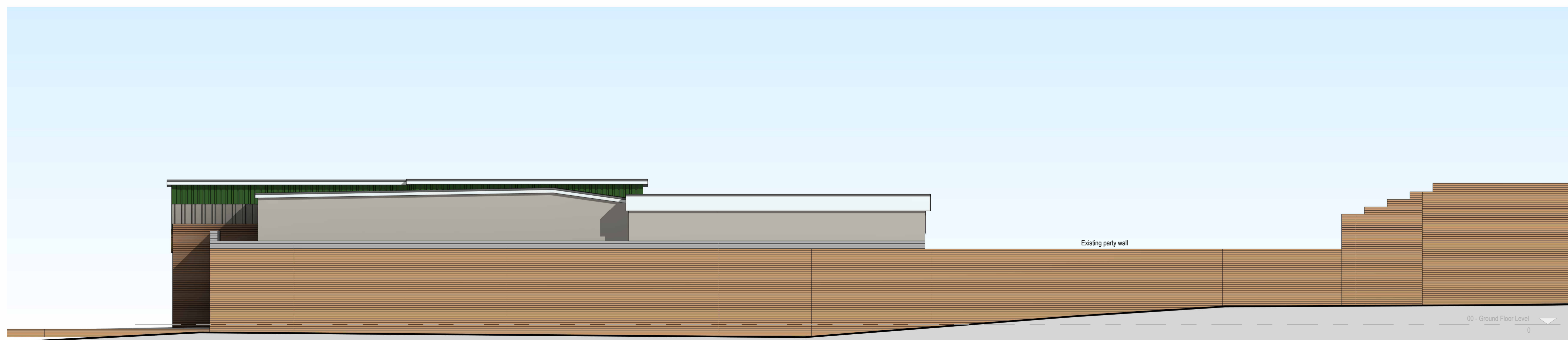
North Elevation
1:100



East Elevation
1:100



South Elevation
1:100



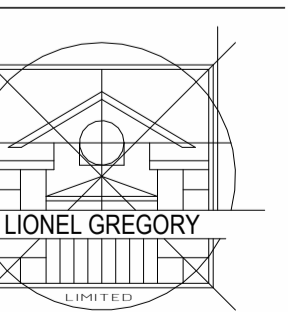
New Industrial Extension
For
Reliance
At
10 Holton Point, Holton Heath Trading Park
Poole

Date: 01/23/24 Scale: 1:100@A1 Drawn: CS

Existing Elevations

5341

03



ARCHITECTS
UNIT J11 FULCRUM BUSINESS PARK
DORSET, BH12 4NU
VANTAGE WAY, POOLE
TEL: (01202) 723157
FAX: (01202) 745464
E-MAIL: office@lionelgregory.co.uk