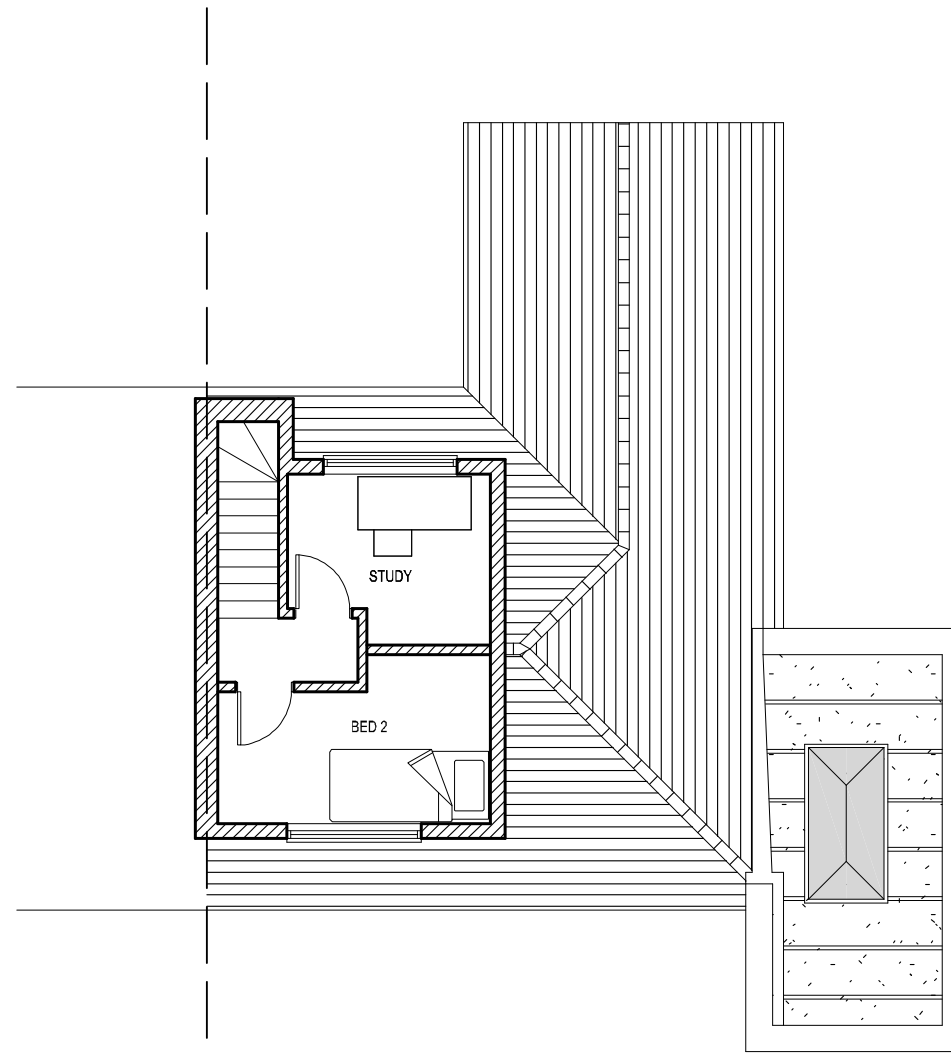


GROUND FLOOR PLAN



FIRST FLOOR PLAN



REV B) AMENDED TO COUNCILS COMMENTS - 29/02/24
REV A) AMENDED TO CLIENTS COMMENTS - 08/02/24

10 ZIDER PASS,
CANVEY ISLAND, SS8 7QJ
- AS PROPOSED PLANS

Scales 1 : 100 @ A3
Date 01/02/24

232/03B