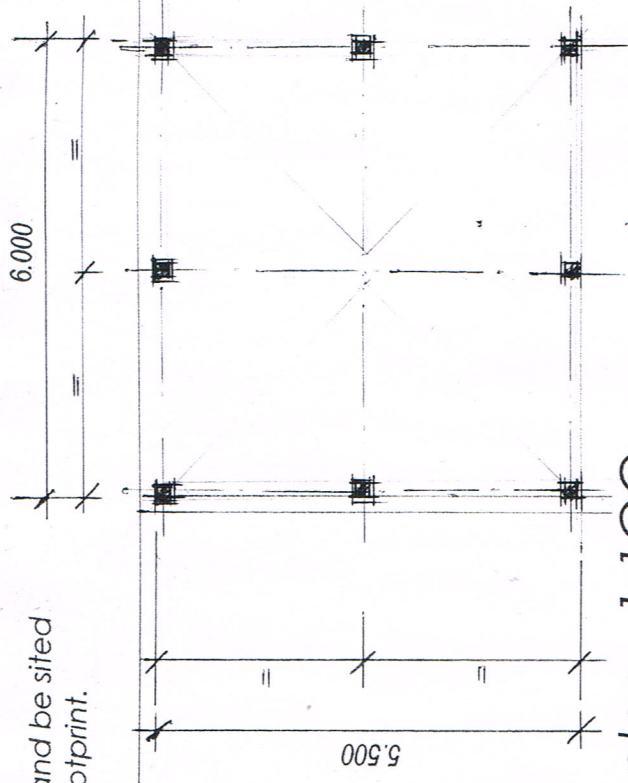


open car port to replace, and be sited on former garage /shed footprint.

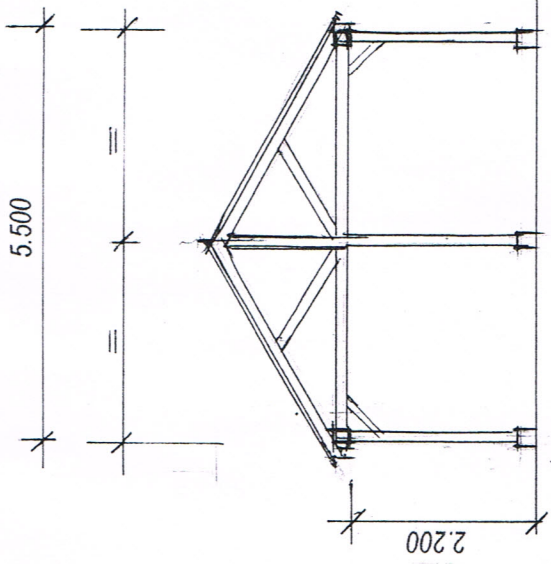
gravel surface on hardcore base under open car port

8no. timber posts, on pedestal blocks on conc. padstones



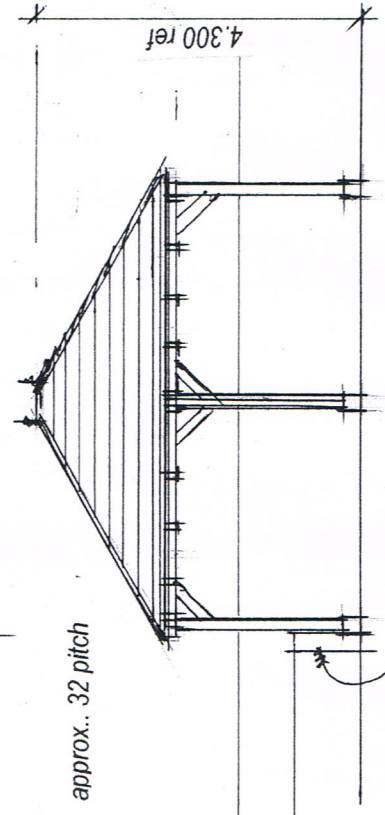
ground plan 1:100

exist. terrace stone retaining wall to remain

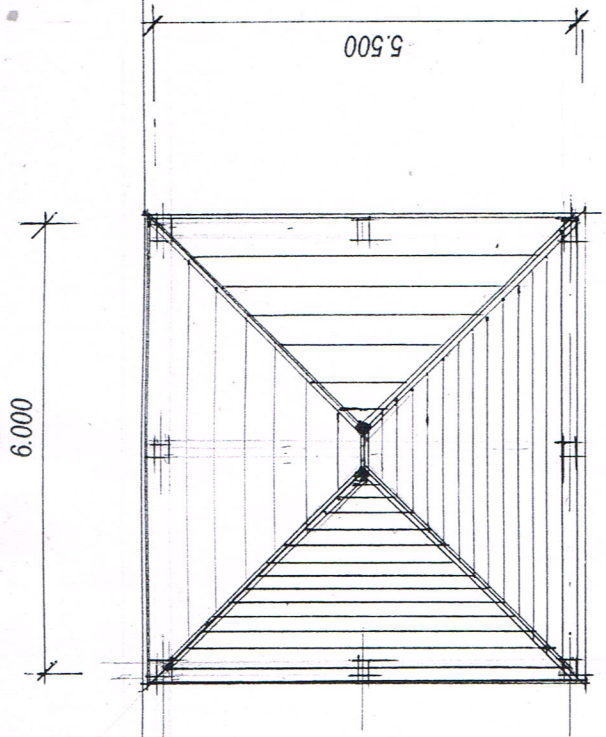


section 1:1

frontage west elevation 1:100
rear east elevation similar

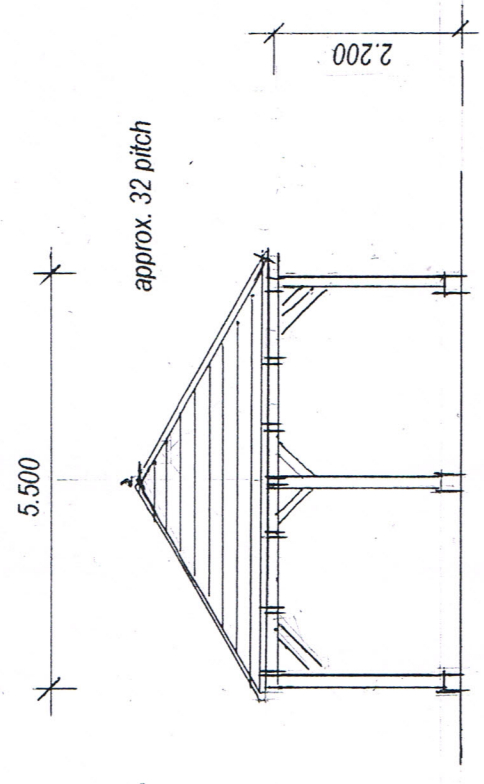


existing stone terrace wall retained



roof plan 1:100

roof to be slate or cedar shingle covering as approved, on battens over boarded soffit on pre-fabricated roof frames



side south elevation 1:100
side north elevation similar

double open car port general arrangement 1:100

GRIFFIN ASSOCIATES
Oundle Peterborough
07850 085320
mob:

title: double open car port general arrangement
scale: 1:100
date: 10/23
drawn:

scheme: ALTERATION AND IMPROVEMENTS
35 HIGH STREET BRIGSTOCK
drawing no: 1599 - p - 12
rev: