

**MATERIALS SCHEDULE**

- WALLS**  
 Main Facing Brickwork - RED BRICK  
 Brick type: TBC  
 Stretcher
- Detail Brickwork - CONTRAST BRICK  
 Brick type: TBC  
 Stretcher bond with 15mm projection
- ROOF**  
 Concrete Interlocking Plain Tile  
 Roof tile: TBC  
 Concrete interlocking plain tile  
 Colour: Slate Grey
- WINDOWS AND REAR DOORS**  
 Window: UPVC  
 HEADS - 'Detail' brick type in soldier bond  
 CILLS - Reconstituted stone cills
- FRONT DOORS**  
 Composite door  
 Colour: TBC  
 Style: TBC
- FASCIAS**  
 Black UPVC
- RAINWATER GOODS**  
 Black UPVC
- FRONT ENTRANCE CANOPIES**  
 Timber entrance canopies, with small format roof tile  
 Colour: TBC

**ELEVATION LEGEND**

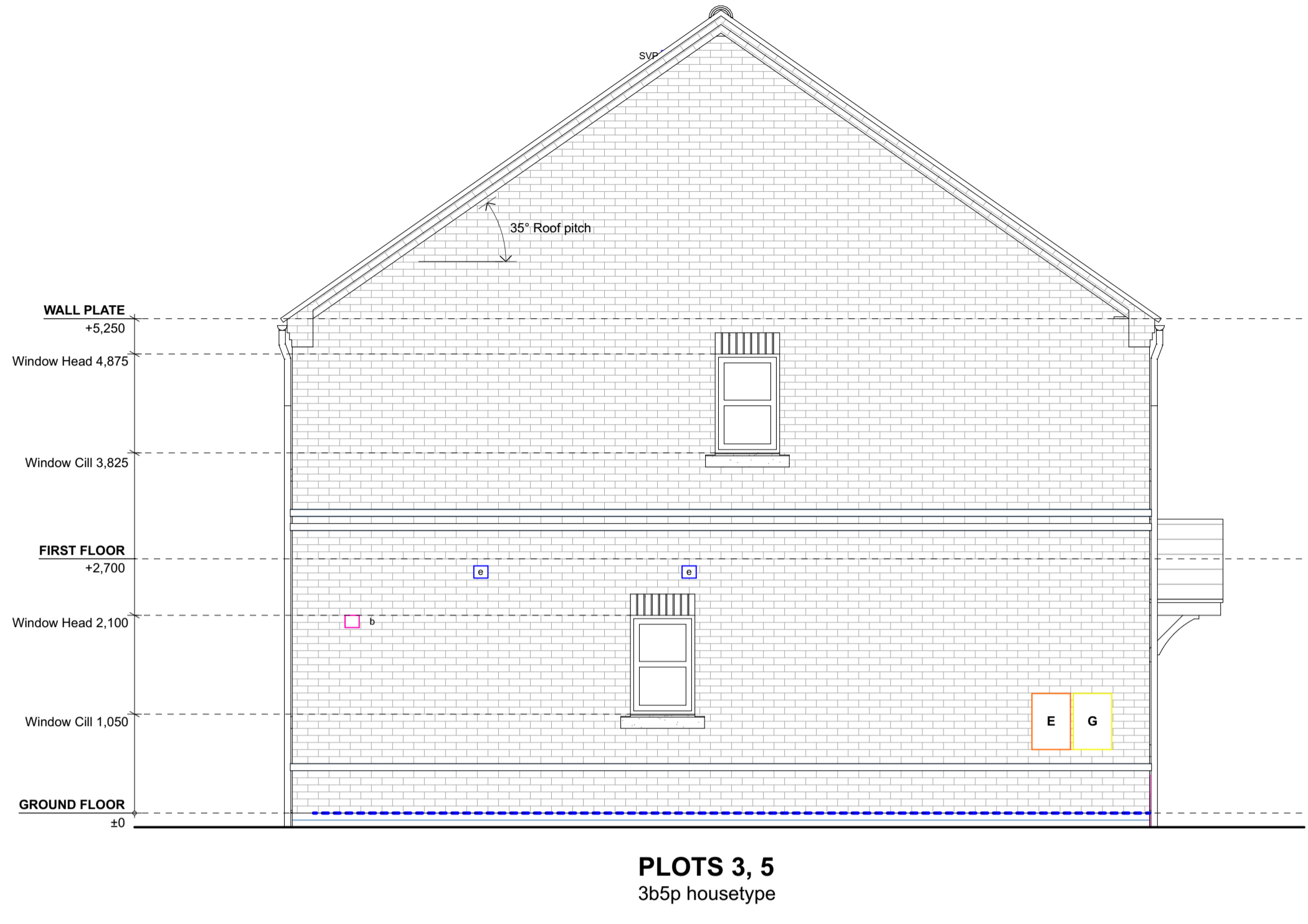
- E Electricity meter box
- G Gas ground box
- D Extract fan
- b Boiler flue
- Primary DPC
- Secondary DPC
- xxx Category M2 notes - accessible and adaptable dwellings
- BT Openreach (BT) Customer Splice Point (ibre entry point)

All MSE design elements shown indicatively (e.g. flues, extracts, gas & electric meters, BT, etc)

**TO BE IN STRICT ACCORDANCE WITH SPECIALIST SUB-CONSULTANT'S DETAILED DESIGN & SPECIFICATION**



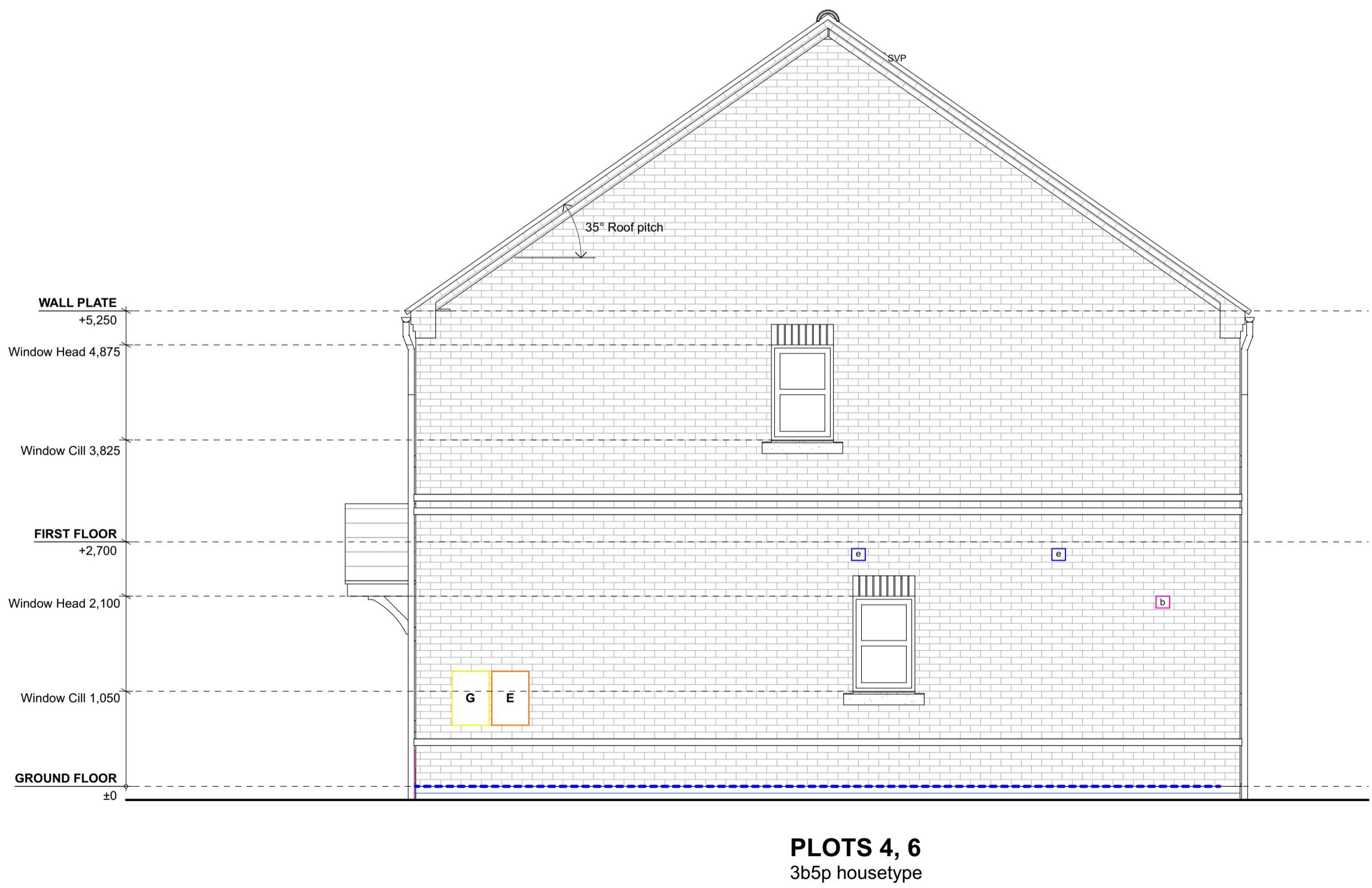
3b5p pair Front Elevation  
1:50



3b5p pair Gable 1 Elevation  
1:50



3b5p pair Rear Elevation  
1:50



3b5p pair Gable 2 Elevation  
1:50

#2	04-12-23	PLANNING ISSUE	OR
#1	10-08-2023	First Issue - for comment	OR
Rev/Date		Description	By



5 Bingham Enterprise Centre, Merca Court,  
 Bingham, Nottinghamshire, NG13 8JX  
 01949 21100 | info@anotherkind.com | www.anotherkind.com

JOB TITLE  
 Springwell Lane, Whetstone

DWG TITLE  
 3b5p Housetype Pair - BLOCK ELEVATIONS

JOB REF-SERIES-DWG NO. REVISION  
 22076-021-003\_P2

STATUS  
 PLANNING

PROJECT NUMBER 22-076	SCALE 1:50	<b>A1</b>
DRAWN SP	CHECKED OR	

This document and its design content is copyright of Anotherkind Architects Ltd. It shall be used in conjunction with all other associated project documents including models, specifications, schedules and related consultation documents. Do not take from documents. All dimensions to be checked on site. Immediately report any discrepancies, errors or omissions on this document to the Originator. This document to be used only for status noted. If in doubt ASK.