

MATERIALS SCHEDULE

- WALLS**
Main Facing Brickwork - RED BRICK
Brick type: TBC
Stretcher
- Detail Brickwork - CONTRAST BRICK
Brick type: TBC
Stretcher bond with 15mm projection
- ROOF**
Concrete Interlocking Plain Tile
Roof tile: TBC
Concrete interlocking plain tile
Colour: Slate Grey
- WINDOWS AND REAR DOORS**
Units: UPVC
HEADS - 'Detail' brick type in soldier bond
CILLS - Reconstituted stone cills
- FRONT DOORS**
Composite door
Colour: TBC
Style: TBC
- FASCIAS**
Black UPVC
- RAINWATER GOODS**
Black UPVC
- FRONT ENTRANCE CANOPIES**
Timber entrance canopies, with small format roof tile.
Colour: TBC

ELEVATION LEGEND

- E Electricity meter box
- G Gas ground box
- E Extract fan
- b Boiler flue
- Primary DPC
- Secondary DPC
- xxx Category M(2) notes - accessible and adaptable dwellings
- BT Openreach (BT) Customer Splice Point (fibre entry point)

All MSE design elements shown indicatively (e.g. flues, extracts, gas & electric meters, BT, etc)

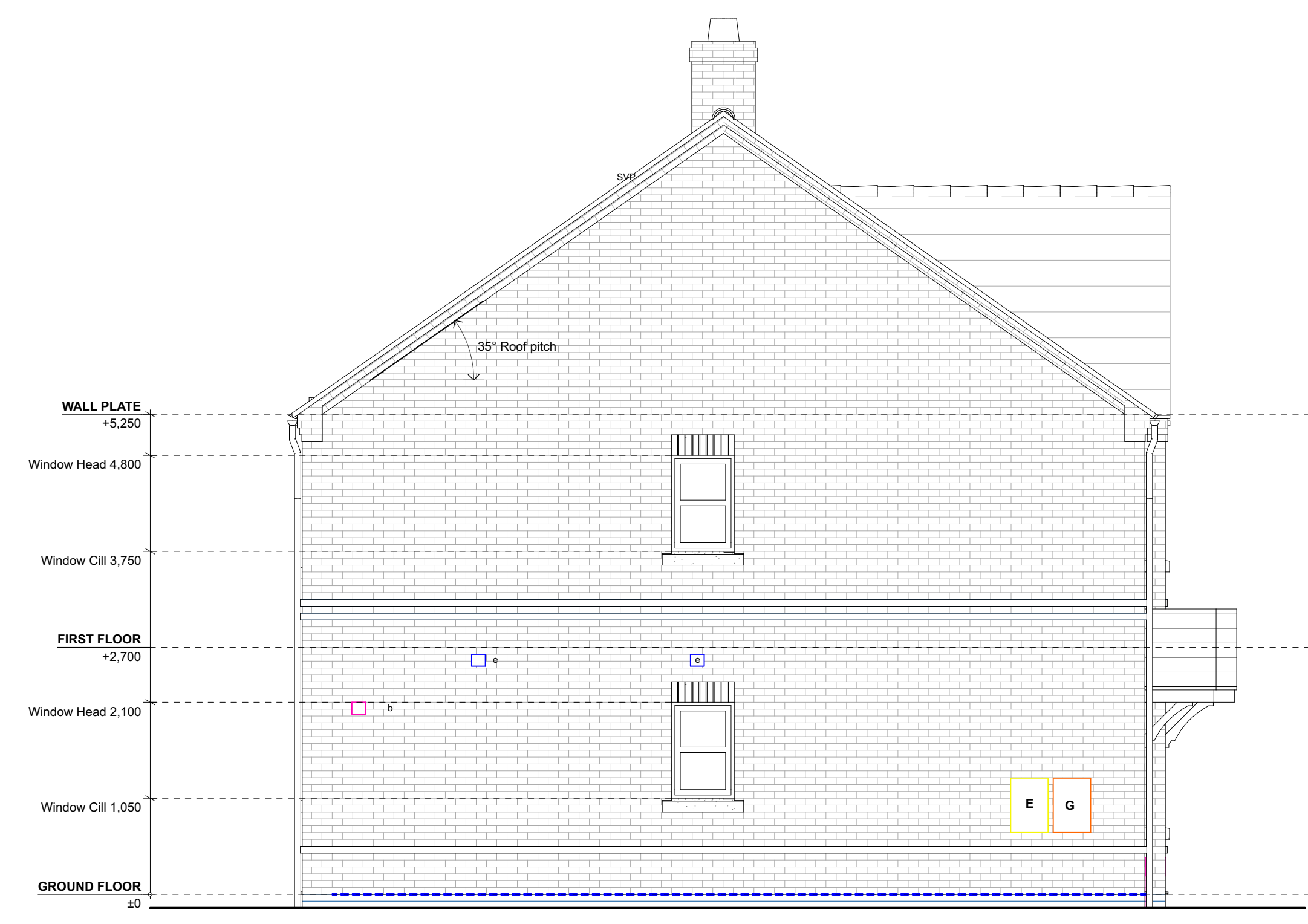
TO BE IN STRICT ACCORDANCE WITH SPECIALIST SUB-CONSULTANT'S DETAILED DESIGN & SPECIFICATION



PLOTS 22(as) 11(opp)
2b4p A Housetype

PLOTS 23(as) 10(opp)
2b4p C Housetype

Type AC Front Elevation
1:50



Type A Gable Elevation
1:50



PLOTS 23(as) 10(opp)
2b4p C Housetype

PLOTS 22(as) 11(opp)
2b4p A Housetype

Type AC Rear Elevation
1:50



Type C Gable Elevation
1:50

#1	14-12-23	PLANNING ISSUE	OR
Rev/Date	Description	By	



5 Bingham Enterprise Centre, Merica Court,
Bingham, Nottinghamshire, NG13 8JX
01949 21100 | info@anotherkind.com | www.anotherkind.com

JOB TITLE
Springwell Lane, Whetstone

DWG TITLE
2b4p Type AC Housetype - BLOCK ELEVATIONS

JOB REF-SERIES-DWG NO. REVISION
22076-021-007_P1

STATUS
PLANNING

PROJECT NUMBER 22-076	SCALE 1:50	A1
DRAWN SP	CHECKED OR	

This document and its design content is copyright of Anotherkind Architects Ltd. It shall be used in conjunction with all other associated project documents including reports, specifications, schedules and related communications. Do not state from documents. All dimensions to be checked on site. Immediately report any discrepancies, errors or omissions on the documents to the Originator. Document to be used only for status noted. If in doubt ASK.