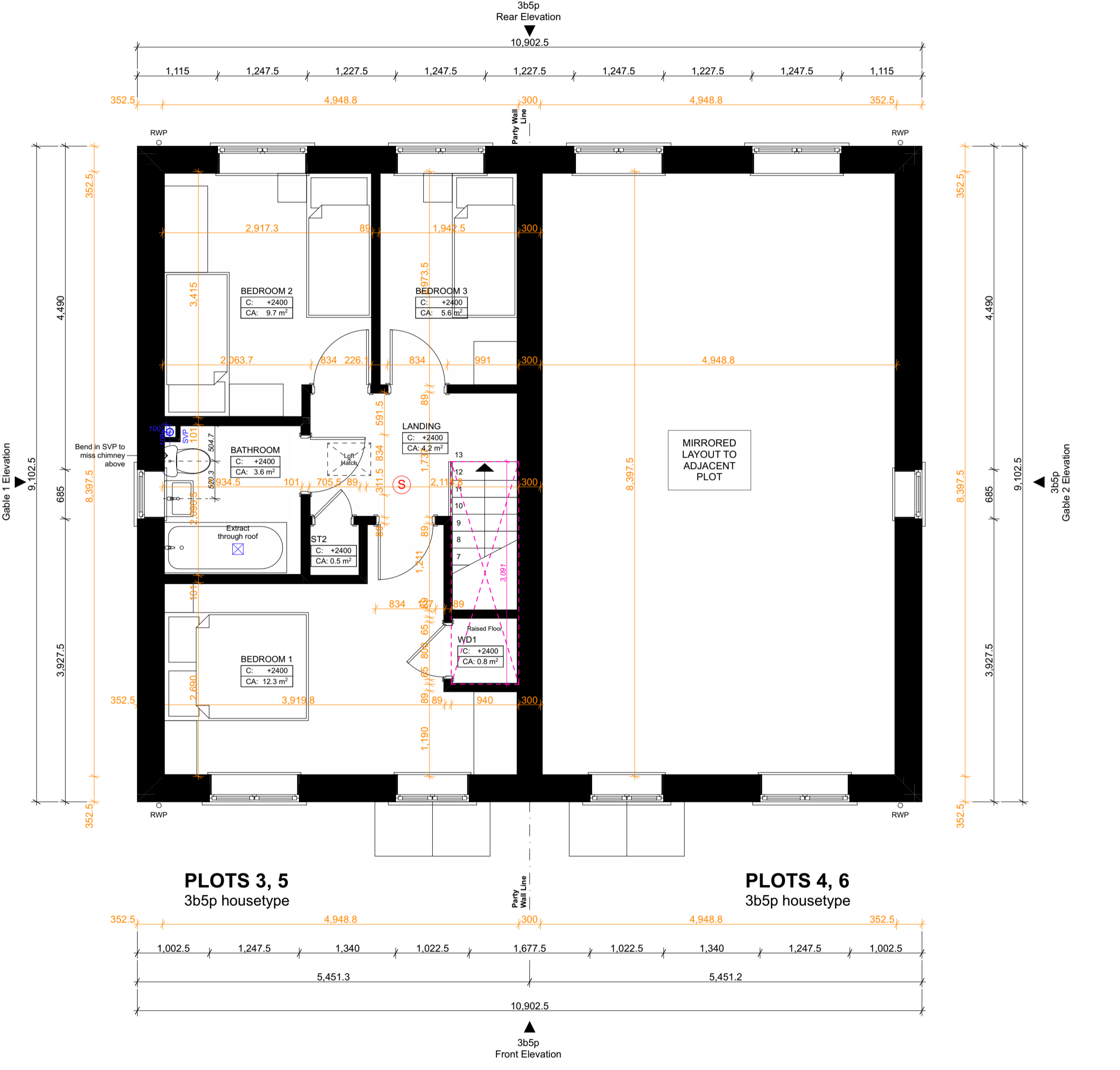


3b5p pair - GROUND FLOOR BLOCK PLAN
 1:50



3b5p pair - FIRST FLOOR BLOCK PLAN
 1:50

PLAN LEGEND

- Electricity meter box
- Gas ground box
- Extract fan
- Boiler flue
- Incoming water
- Smoke / heat detectors
- External setting out
- Internal setting out - structural dimensions (not including internal linings / finishes)
- Drainage setting out
- Stair structural opening + dimensions
- Category M4(2) notes - accessible and adaptable dwellings
- Openreach (BT) Customer Splice Point (fibre entry point)
- Openreach (BT) Optical Network Termination
- Openreach (BT) Customer Provider router

All MSE design elements shown indicatively (e.g. flues, extracts, gas & electric meters, BT, etc.)
TO BE IN STRICT ACCORDANCE WITH SPECIALIST SUB-CONSULTANT'S DETAILED DESIGN & SPECIFICATION

#2	04-12-23	PLANNING ISSUE	OR
#1	10-08-2023	First Issue - for comment	OR
Rev/Date		Description	By



5 Brigham Enterprise Centre, Merica Court,
 Brigham, Nottinghamshire, NG13 9JX
 01949 21100 | info@anotherkind.com | www.anotherkind.com

JOB TITLE
 Springwell Lane, Whetstone

DWG TITLE
 3b5p Housetype Pair - BLOCK PLANS

JOB REF-SERIES-DWG NO. REVISION
 22076-020-003_P2

STATUS
 PLANNING

PROJECT NUMBER 22-076	SCALE 1:50	A1
DRAWN SP	CHECKED OR	

This document and its design content is copyright of Anotherkind Architects Ltd. It shall be used in conjunction with all other associated project documents including models, specifications, schedules and related communications documents. Do not state from documents. All dimensions to be checked on site. Immediately report any discrepancies, errors or omissions on this document to the Originator. Document to be used only for status noted. If in doubt ASK.