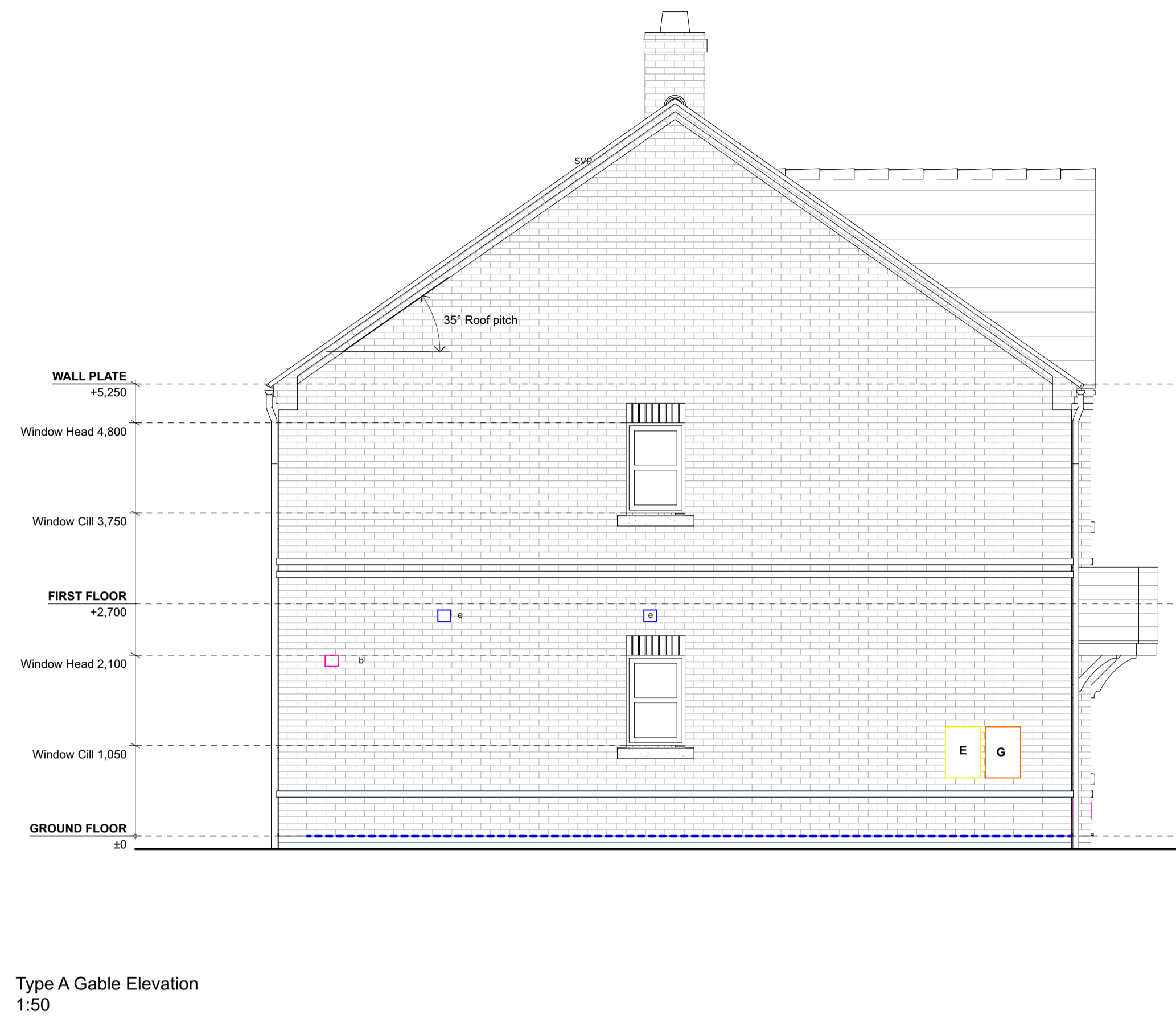




Type AB Front Elevation
1:50



Type AB Rear Elevation
1:50



- MATERIALS SCHEDULE**
- WALLS**
Main Facing Brickwork - RED BRICK
Brick type TBC
Stretcher
- Detail Brickwork - CONTRAST BRICK
Brick type TBC
Stretcher bond with 15mm projection
- ROOF**
Concrete Interlocking Plain Tile
Roof tile TBC
Concrete interlocking plain tile
Colour: Slate Grey
- WINDOWS AND REAR DOORS**
Units UPVC
HEADS - 'Detail' brick type in soldier bond
CILLS - Reconstituted stone cills
- FRONT DOORS**
Composite door
Colour: TBC
Style: TBC
- FASCIAS**
Black UPVC
- RAINWATER GOODS**
Black UPVC
- FRONT ENTRANCE CANOPIES**
Timber entrance canopies, with small format roof tile.
Colour: TBC

- ELEVATION LEGEND**
- E Electricity meter box
 - G Gas ground box
 - D Extract fan
 - b Boiler flue
 - Primary DPC
 - Secondary DPC
 - xxx Category M(2) notes - accessible and adaptable dwellings
 - BT Openreach (BT) Customer Splice Point (ibre entry point)

All MSE design elements shown indicatively (e.g. flues, extracts, gas & electric meters, BT, etc)

TO BE IN STRICT ACCORDANCE WITH SPECIALIST SUB-CONSULTANT'S DETAILED DESIGN & SPECIFICATION

#	Date	PLANNING ISSUE	OR
P1	10.08.2023	First Issue - for comment	OR
	Rev/Date	Description	By



5 Brigham Enterprise Centre, Merca Court, Brigham, Nottinghamshire, NG13 8JX
01949 27100 | info@anotherkind.com | www.anotherkind.com

JOB TITLE
Springwell Lane, Whetstone

DWG TITLE
2b4p Type AB Housetype - BLOCK ELEVATIONS

JOB REF-SERIES-DWG NO. REVISION
22076-021-002_P2

STATUS
PLANNING

PROJECT NUMBER	SCALE	A1
22-076	1:50	
DRAWN SP	CHECKED OR	

This document and its design content is copyright of Anotherkind Architects Ltd. It shall be used in conjunction with all other associated project documents including notes, specifications, schedules and related consultants documents. Do not state from documents. All dimensions to be checked on site. Immediately report any discrepancies, errors or omissions on this document to the Originator. This document to be used only for status noted. If in doubt ASK.