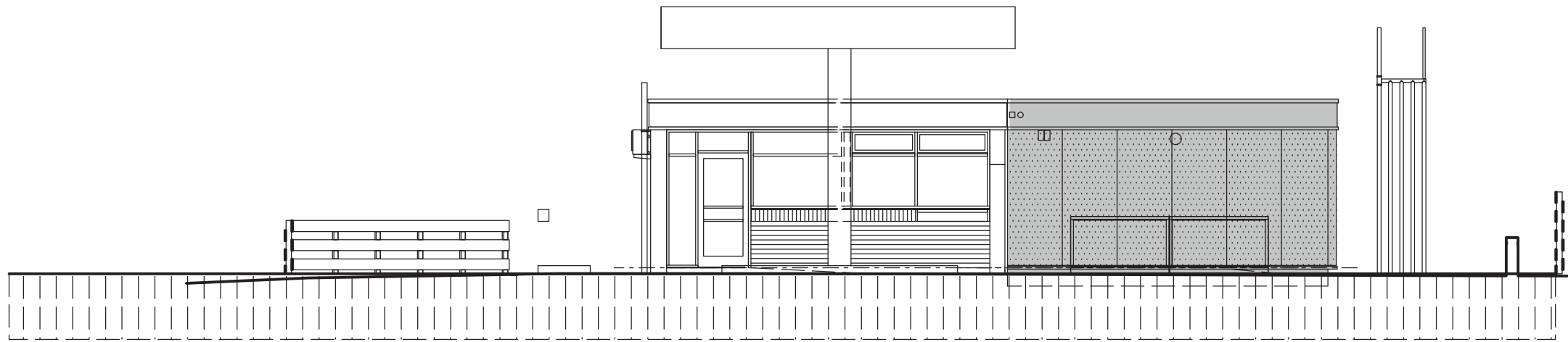
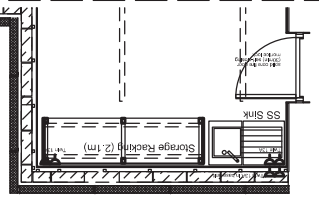


REAR ELEVATION (facing North) -AS PROPOSED



FRONT ELEVATION NEW EXTENSION (facing South) -AS PROPOSED

COYLTON FS -SPECIFICATION

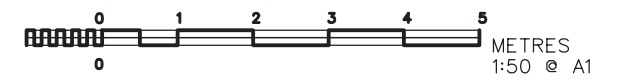
EXTERNAL WALL CONSTRUCTION:
 50mm pre-coat steel composite panels (hung vertically with secret-fix joints Colour RAL 9010 white (prov.)
 50mm cavity & 140mm blockwork ex 32 x 25mm rreated timber battens with full-depth EPS insulation between 34mm insulated TE plasterboard with vapour check, taped & filled joints
 100x15mm MDF facings & skirtings

FLOOR CONSTRUCTION
 Sheet vinyl floor finish on latex screed
 Power-floated 150mm reinforced concrete slab
 1000g Visquene DPM
 100mm non-compressible XPS insulation
 50mm blinding on consolidated type 1 fill

FOUNDATIONS
 600x200 reinorced concrete strip foundations to Structural Engineers design on consolidated type 1 fill (225mm max layers

PARTITIONS
 95x45mm C16 timber studs @ 600mm c/c
 12.5mm TE plasterboard both sides
 Quilt insulation between studs

ROOF
 PVC membrane roof with welded joints on fleece layer on foil-faced 100mm PIR insulation mechanically fixed to 18mm WBP plywood laid to falls with furring pieces on 145 x 45mm treated timber joists @ 600mm c/c on 145 x 45mm wallplates secured with galv steel wind-straps
 150mm glasswool Insulation between joists
 12.5mm TE plasterboard, with taped & filled joints



Copyright MacKenzie Architects 2015-22

REV. DATE	DESCRIPTION	DRAWN	REV. DATE	DESCRIPTION	DRAWN
	INITIAL DRAWING				
A	Aug 22				
B	Jan 24				
	Modular elevations added				
	Single exit door				

MACKENZIE ARCHITECTS

ALEX. S. MACKENZIE & PARTNERS
 CHARTERED ARCHITECTS
 PO Box 2853 BEARSDEN
 GLASGOW G61 9DT
 TEL: 0141 942 6222
 email: info@mackenzie-projects.com
 Web: www.mackenzie-projects.com

PROJECT TITLE
 PROPOSED ALTERATIONS & EXTENSION
 SALES BUILDING -COYLTON FS, KA6 6JW

DRAWING TITLE
 SALES BUILDING REAR ELEVATION
 -AS PROPOSED

JOB NO.
4485

DWG NO.
15 B