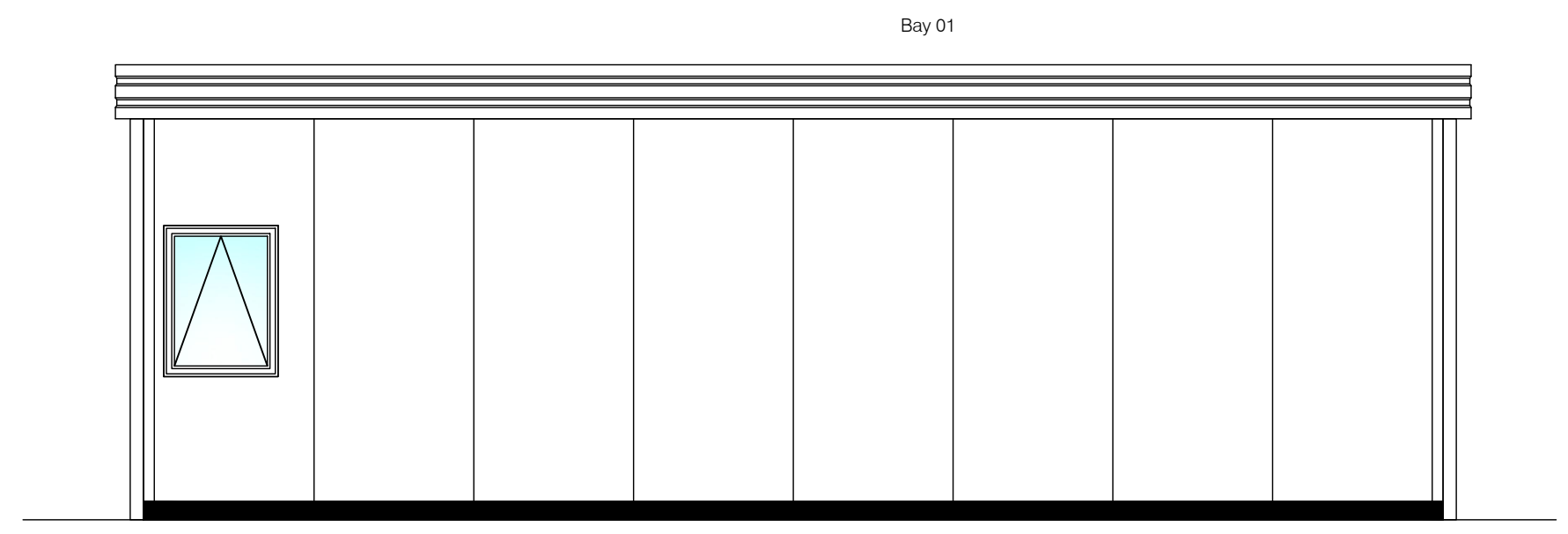
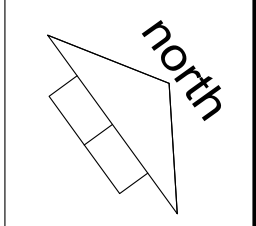
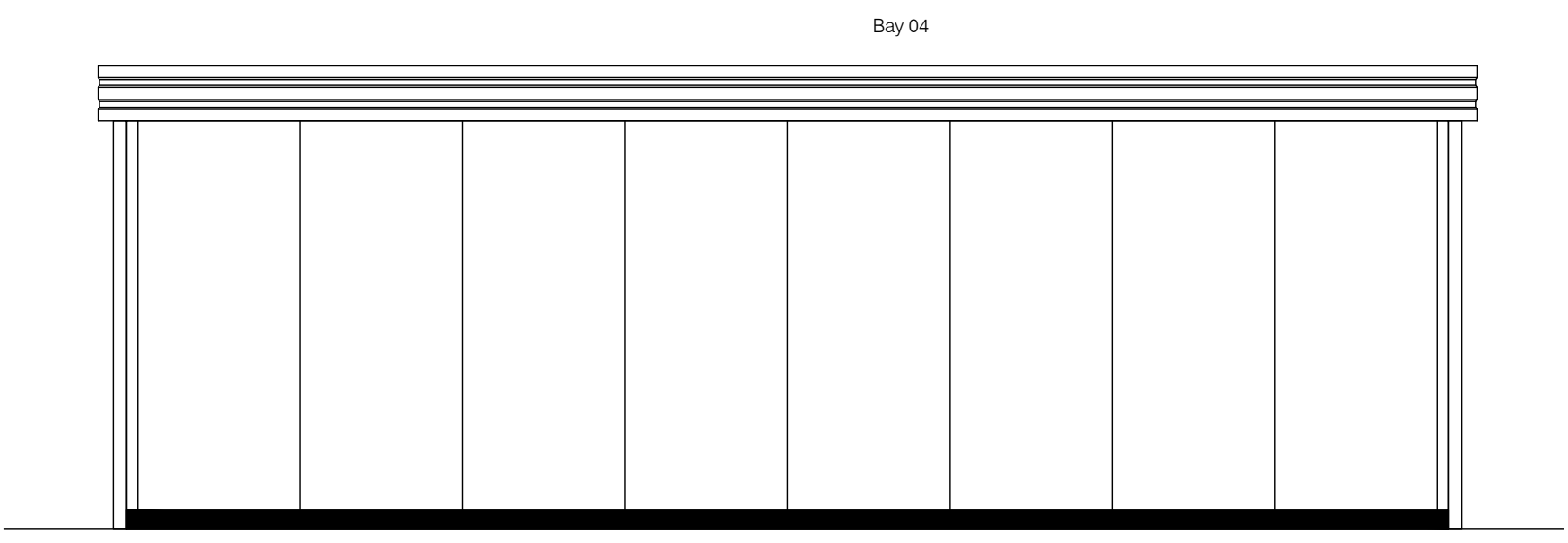


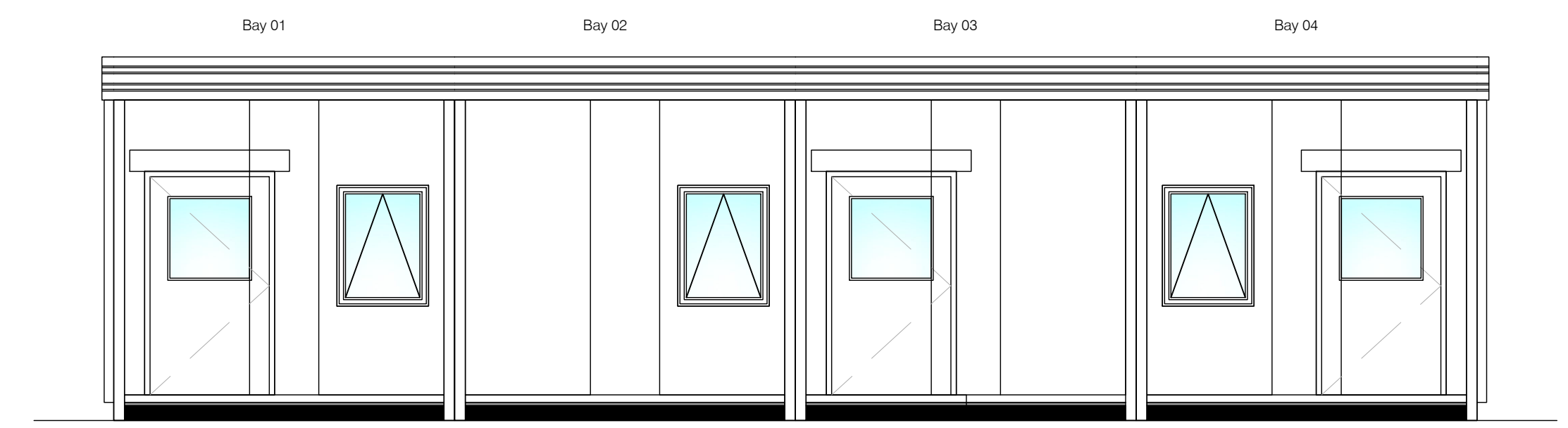
THE CONTRACTOR IS DEEMED TO HAVE CHECKED ALL DIMENSIONS ON SITE AND IS TO REPORT ANY DISCREPANCIES TO CYNERGI LTD.  
 THE CONTENTS OF THIS DRAWING ARE COVERED BY COPYRIGHT AND REMAIN THE PROPERTY OF CYNERGI LTD. WRITTEN APPROVAL MUST BE OBTAINED FROM CYNERGI LTD PRIOR TO DUPLICATION OR REPRODUCTION OF THIS DRAWING OR ITS CONTENTS.  
 ANY DIMENSIONS NOT SHOWN ARE TO BE CHECKED AND AGREED WITH CYNERGI LTD.



view C



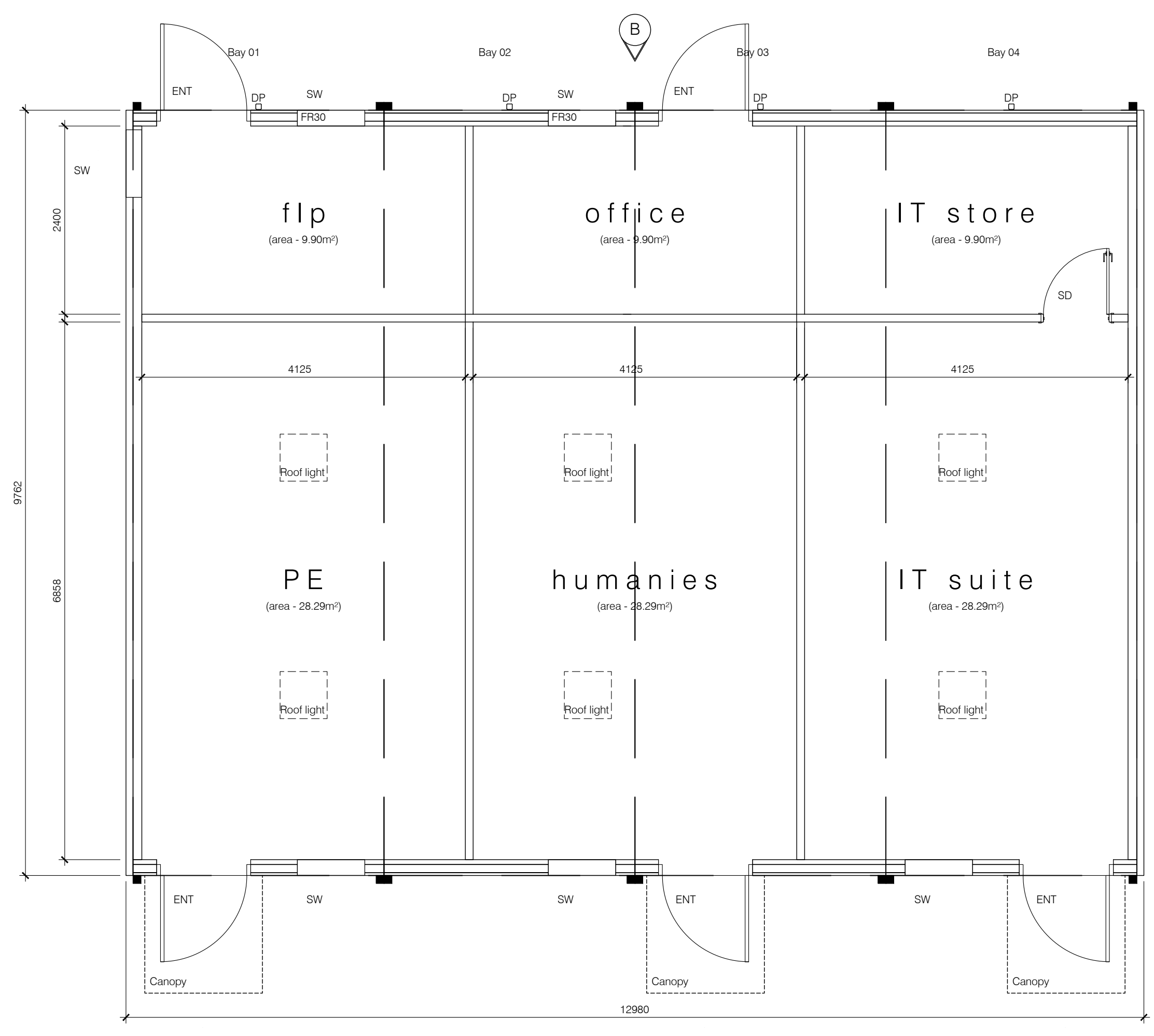
view D



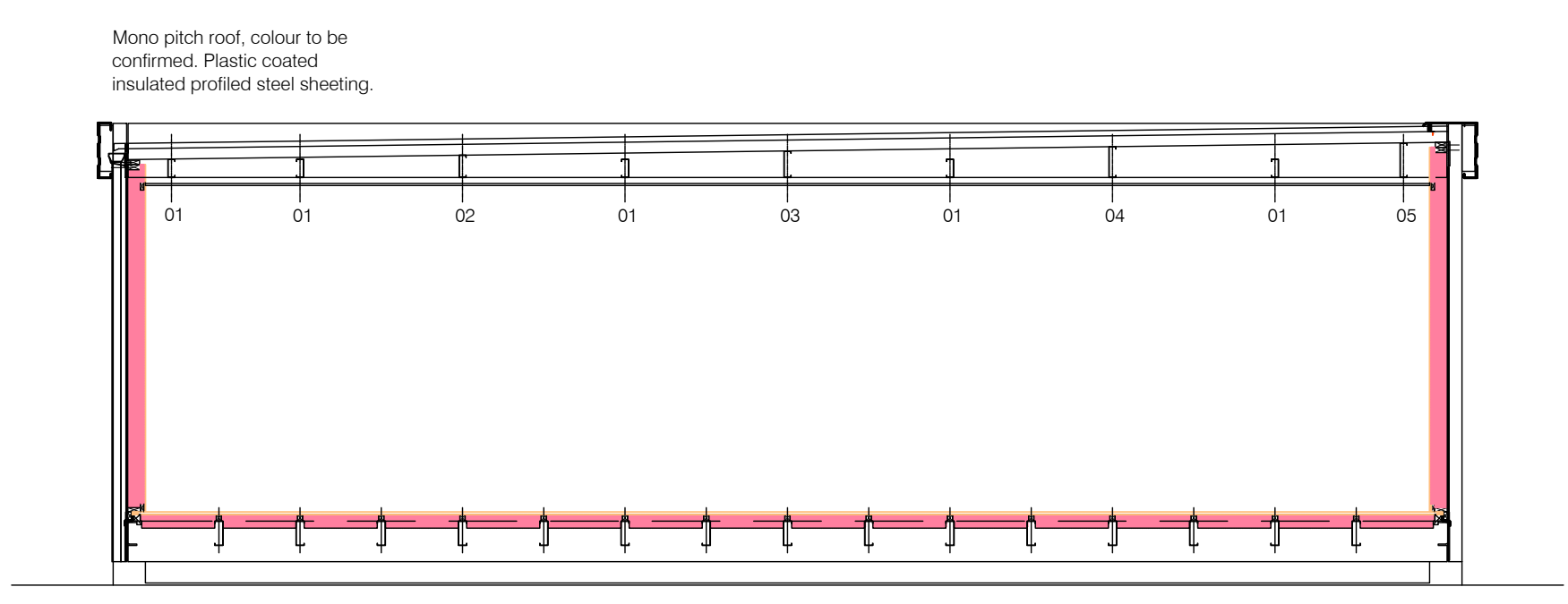
view A



view B



ground floor plan



Mono pitch roof, colour to be confirmed. Plastic coated insulated profiled steel sheeting.

section

NOTES:  
 Exact size and position of roof lights is subject to the final design.

- MATERIALS SCHEDULE:**
- External walls below dpc to be in smooth grey modular building panels.
  - Single ply roofing membrane in colour grey.
  - PVCu double glazed windows and doors in colour white.
  - Concrete paving slabs to footpath around building.

Revisions:

Cynergi Ltd  
 The Firs, 67 London Road  
 Newark, Nottinghamshire  
 NG24 1RZ  
 (T) 01636 605324  
 (E) enquiries@cynergi.info

Client:  
**KEDLESTON GROUP LTD**

Project:  
 External Remodeling Works at Olsen School, 85 - 87 Liverpool Road, Great Crosby, L23 5TD.

Drawing Title:  
**EXTERNAL CLASSROOM**

Proposed Floor Plan and Elevations

PLANNING ISSUE

|           |              |             |         |
|-----------|--------------|-------------|---------|
| Date:     | January 2024 | Scale:      | A1@1:50 |
| Drawn by: | DAL          | Checked by: | CK      |

|                 |        |      |   |
|-----------------|--------|------|---|
| Drawing Number: | 480-10 | Rev: | - |
|-----------------|--------|------|---|

