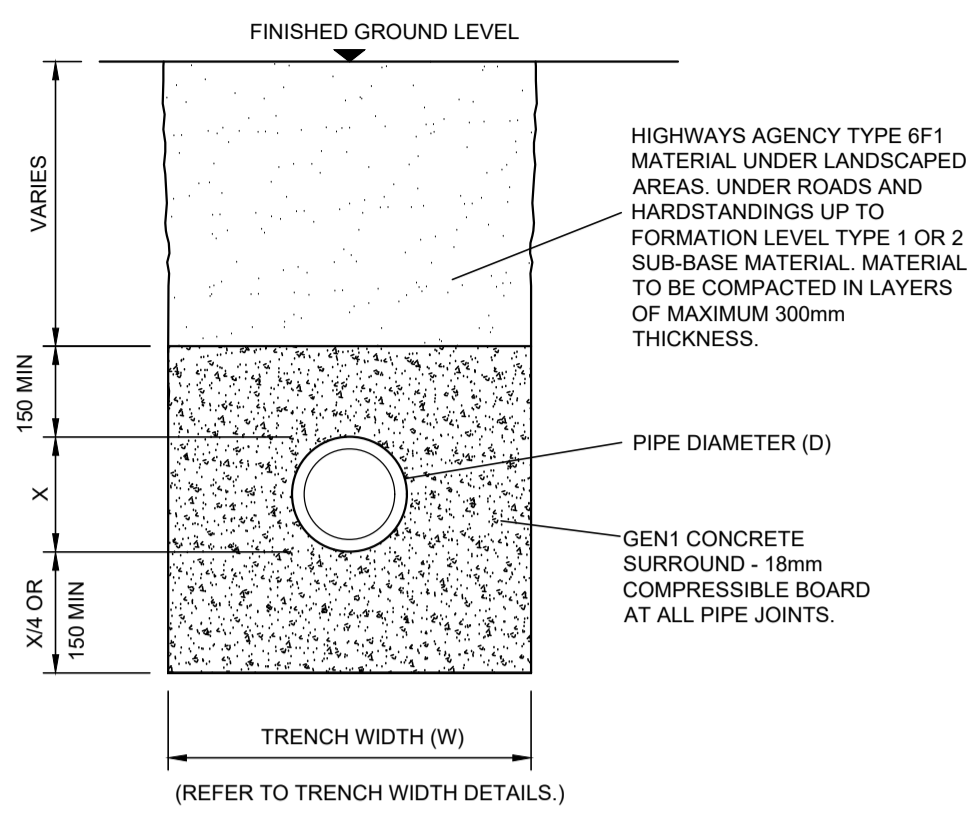


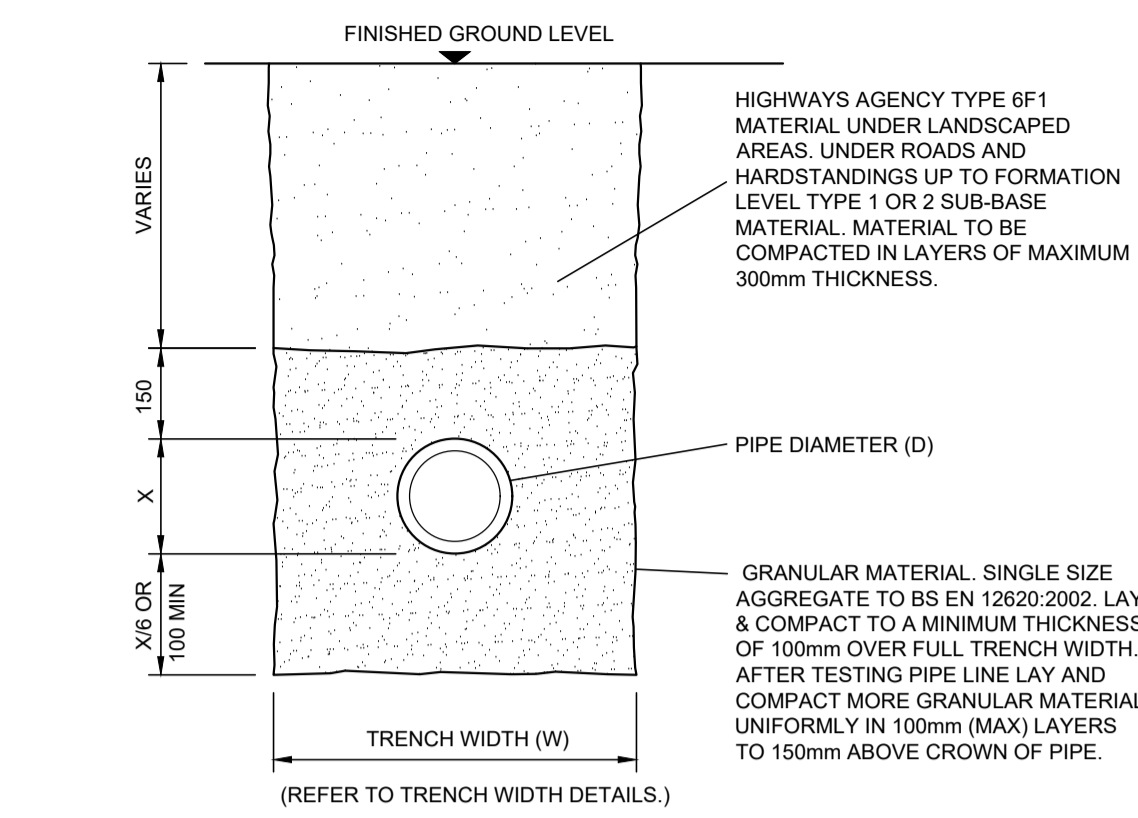
NOTES

1. THIS DRAWING MUST BE READ IN CONJUNCTION WITH DRAWING J450/101.
2. PRIOR TO COMMENCEMENT OF ANY WORKS, THE CONTRACTOR SHALL LIAISE WITH ALL RELEVANT AUTHORITIES TO ENSURE THAT ALL EXISTING SERVICES THAT MAY BE AFFECTED BY THE WORKS ARE LOCATED, PROTECTED AND WHERE NECESSARY DIVERTED.
3. ALL WORKS IN CONJUNCTION WITH PUBLIC SEWERS SHALL BE IN ACCORDANCE WITH THE REQUIREMENTS OF THE WATER AUTHORITY.
4. ALL PRECAST AND INSTU CONCRETE AND MORTAR USED IN THE CONSTRUCTION OF FOUL SEWERS/DRAINS MUST COMPLY WITH THE REQUIREMENTS OF BRE SPECIAL DIGEST 1, DESIGN SULPHATE CLASS DS-3 AND AGGRESSIVE CHEMICAL ENVIRONMENT FOR CONCRETE CLASS AC-3. FOR ALL OTHER CONCRETE/MORTAR THE REQUIREMENTS FOR BURIED CONCRETE SHALL BE AS SPECIFIED IN THE GEOTECHNICAL INVESTIGATION.
5. CONCRETE MIX DESIGNATIONS SHOWN ON THIS DRAWING ARE TO BS 8500.
6. ALL PRIVATE DRAINAGE WORKS SHALL COMPLY WITH THE BUILDING REGULATIONS, BS EN752 AND THE RELEVANT MANUFACTURERS RECOMMENDATIONS.



CLASS Z BEDDING

TO ALL PIPES WITH COVER FROM FINISHED SURFACE TO CROWN LESS THAN OR EQUAL TO 900mm IN TRAFFICKED AREAS OR LESS THAN 600mm COVER IN LANDSCAPED AREAS.



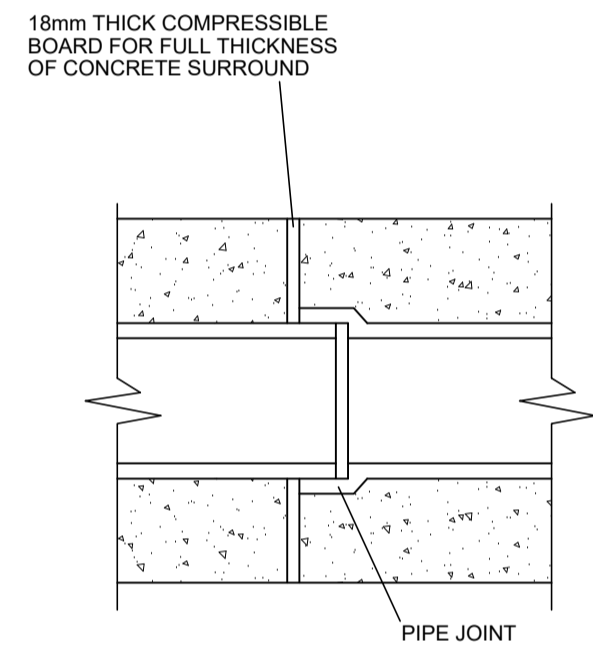
CLASS S BEDDING

TO ALL PIPES WITH COVER FROM FINISHED SURFACE TO CROWN GREATER THAN 900mm IN TRAFFICKED AREAS OR GREATER THAN 600mm COVER IN LANDSCAPED AREAS.

TRENCH WIDTH DETAILS

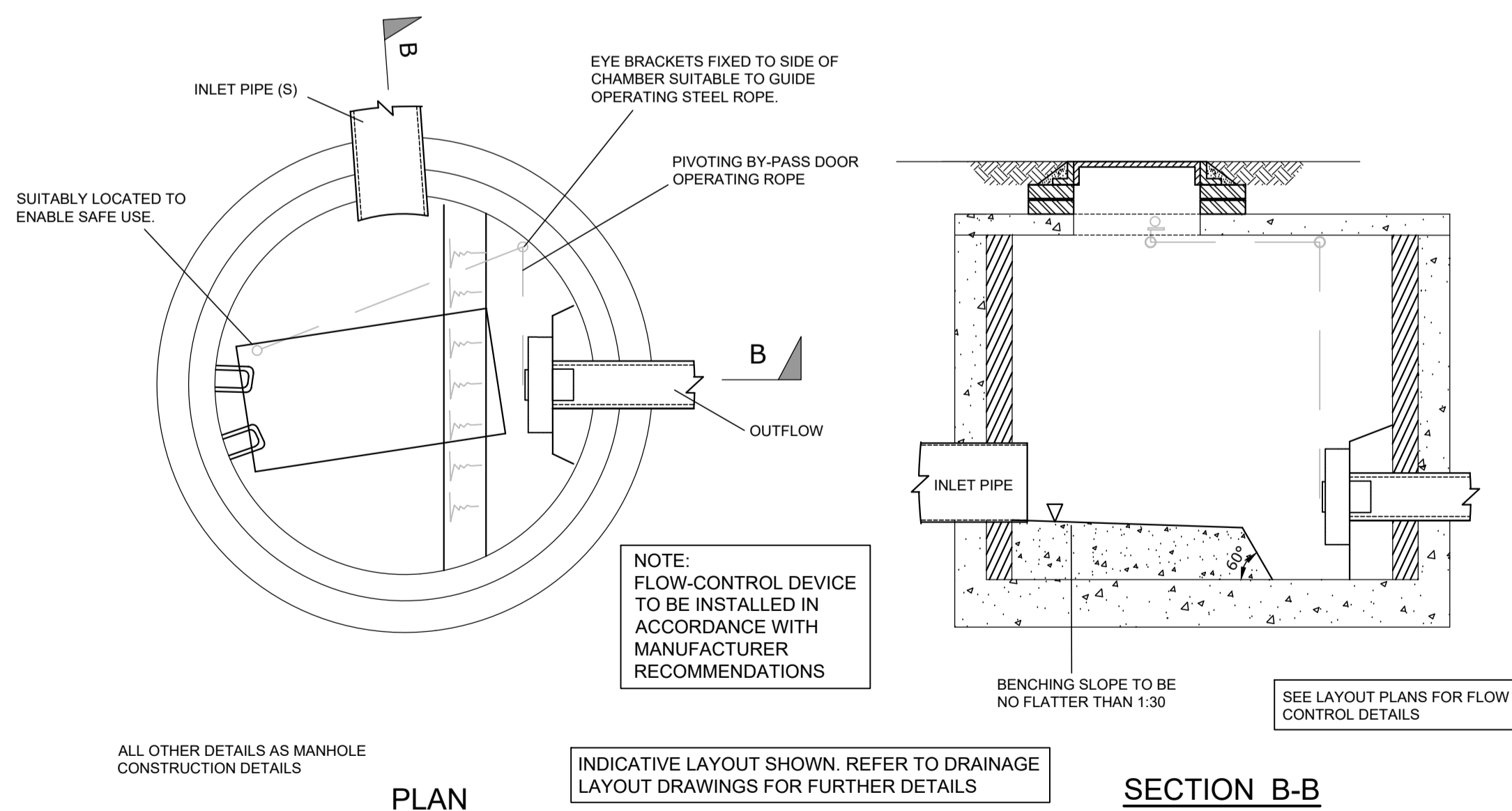
D	150	225	300	375
W	450	575	600	675

TYPICAL PIPE BEDDING DETAILS



DETAIL OF MOVEMENT JOINT FOR PIPES WITH CONCRETE BED AND SURROUND

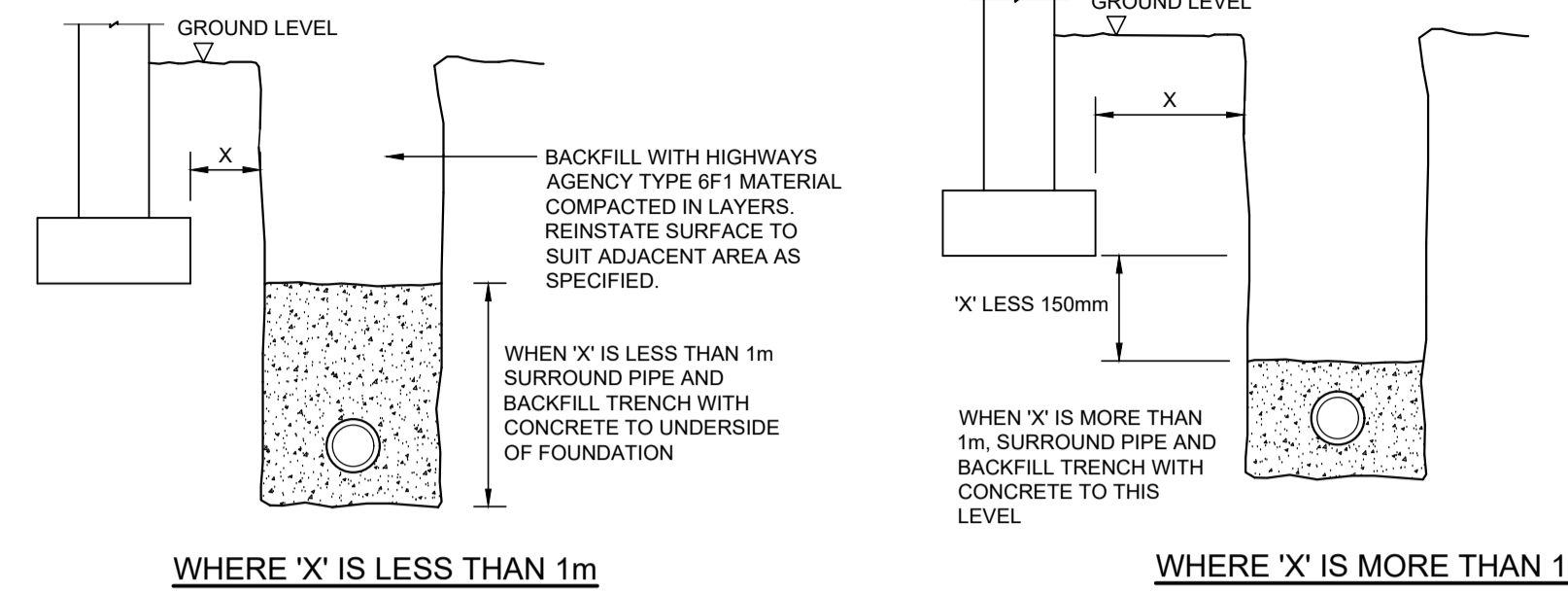
(TO BE PROVIDED AT ALL PIPE JOINTS)



TYPICAL FLOW CONTROL CHAMBER DETAIL

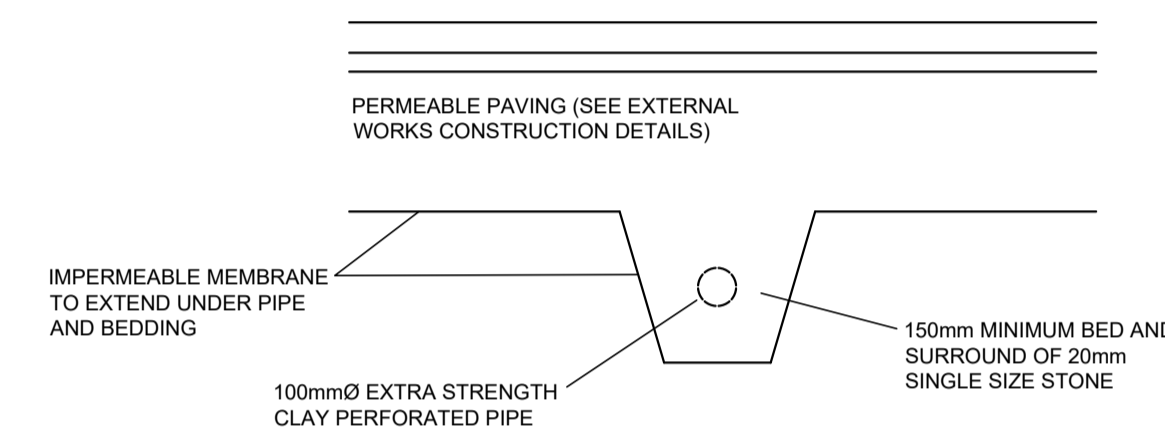
NOTE: THE DETAILS OF PROPOSED FLOW CONTROL CHAMBER ARE FOR GUIDANCE ONLY. EXACT DETAILS MAY VARY GREATLY TO SUIT TYPE OF DEVICE CHOSEN BY MANUFACTURER TO PROVIDE THE REQUIRED HEADFLOW RATES.

NOTE: THESE DETAILS ARE FOR USE IN THE CONSTRUCTION OF PRIVATE DRAINAGE ONLY REFER TO DRAWINGS 10797/110, 111, & 112 FOR CONSTRUCTION DETAILS OF ADOPTABLE DRAINAGE WORKS



PIPE RUNS NEAR BUILDINGS & BELOW FOUNDATIONS

NOTE: GEN1 CONCRETE SURROUND, Min. 150mm ABOVE PIPE CROWN & 150mm BELOW PIPE INVERT.

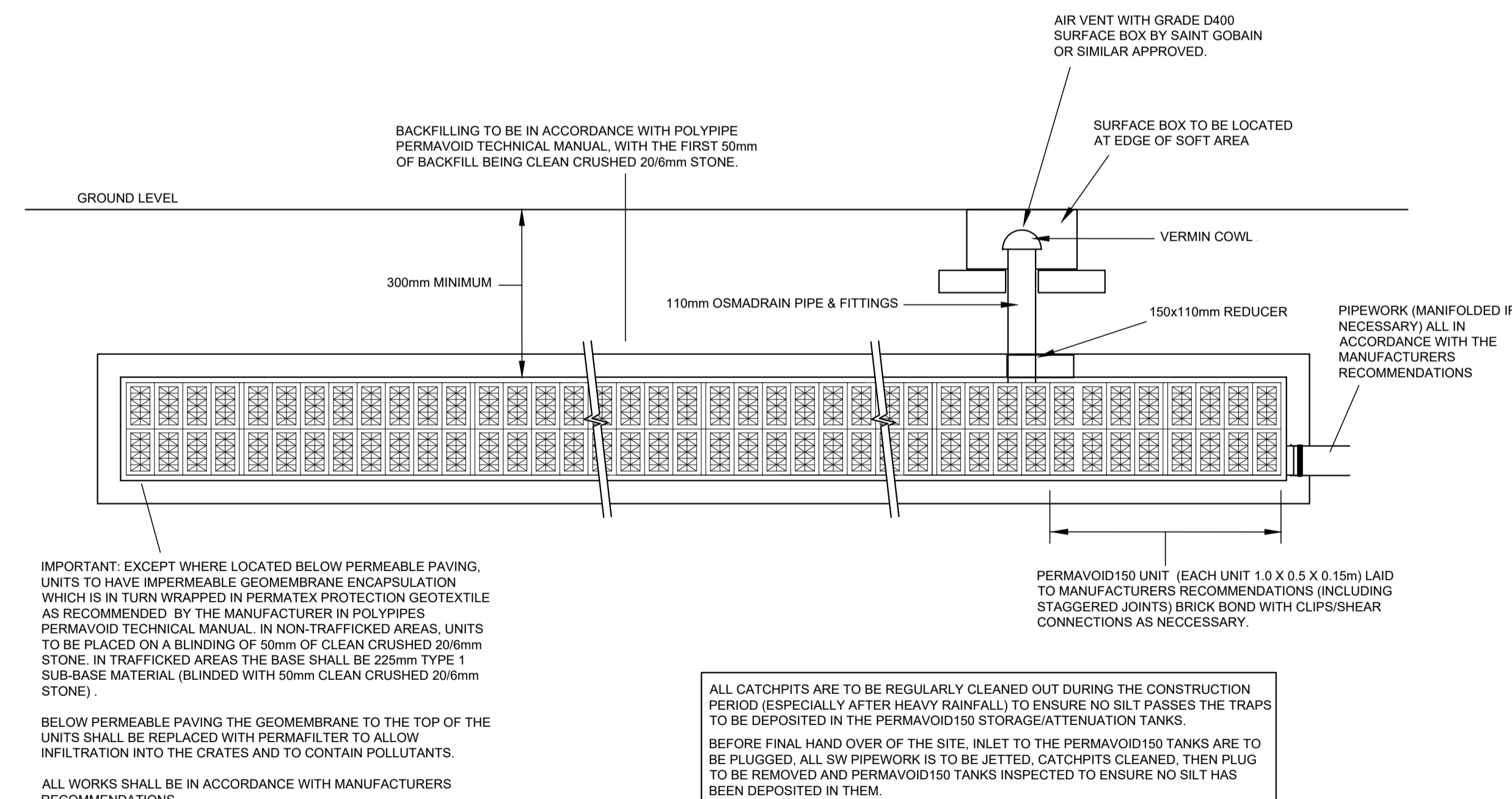


DETAIL OF PERFORATED DRAIN BELOW PERMEABLE PAVING SUB-BASE

IMPORTANT

The impermeable lining to sides and bases of all crates must be sealed to provide a watertight finish that will stop infiltration of surface water into the ground.

The impermeable lining must be suitable to withstand the effects of any possible contamination that may be encountered. Alternatively a suitable thickness of contaminated ground must be removed and replaced with well compacted inert clay lining to the recommendations of the Engineer and the Geotechnical Consultant.



PERMAVOID150 SURFACE WATER STORAGE DETAILS

PIPEWORK SHOWN INDICATIVELY ONLY. SEE DRAINAGE LAYOUTS FOR LOCATIONS AND LEVELS OF PIPEWORK.

DRAWING FOR APPROVAL NOT FOR CONSTRUCTION

Rev.

ROSE

CLIENT
Rosper Estates Limited

PROJECT
Redevelopment of Former Chambers Bus Depot
Off Church Square
Bures St Mary, Suffolk

DRAWING TITLE
Private Areas Drainage Construction
Details - Sheet 2 of 2

JOB NO.	J450
DATE	Nov 2022
SCALES	Not to Scale
DRAWN BY	KWW
CHECKED BY	
DWG NO.	103
SHEET NO.	

© Copyright Rose Builders Limited