

- REMOVED/DEMOLITION ---
 - PROPOSED ADDITIONAL WORKS ●
 - EXISTING DRAINAGE ---
 - FOUL DRAINAGE ---
 - SURFACE WATER DRAINAGE ---
 - GRAVEL WITH FRENCH DRAIN TO EAST/AND SOUTH ELEVATIONS WITH GULLIES DISCHARGING TO NEW SOAKAWAYS →
- NEW BELOW GROUND DRAINAGE INDICATIVE ONLY TBC BY STRUCTURAL ENGINEER.

SOUP

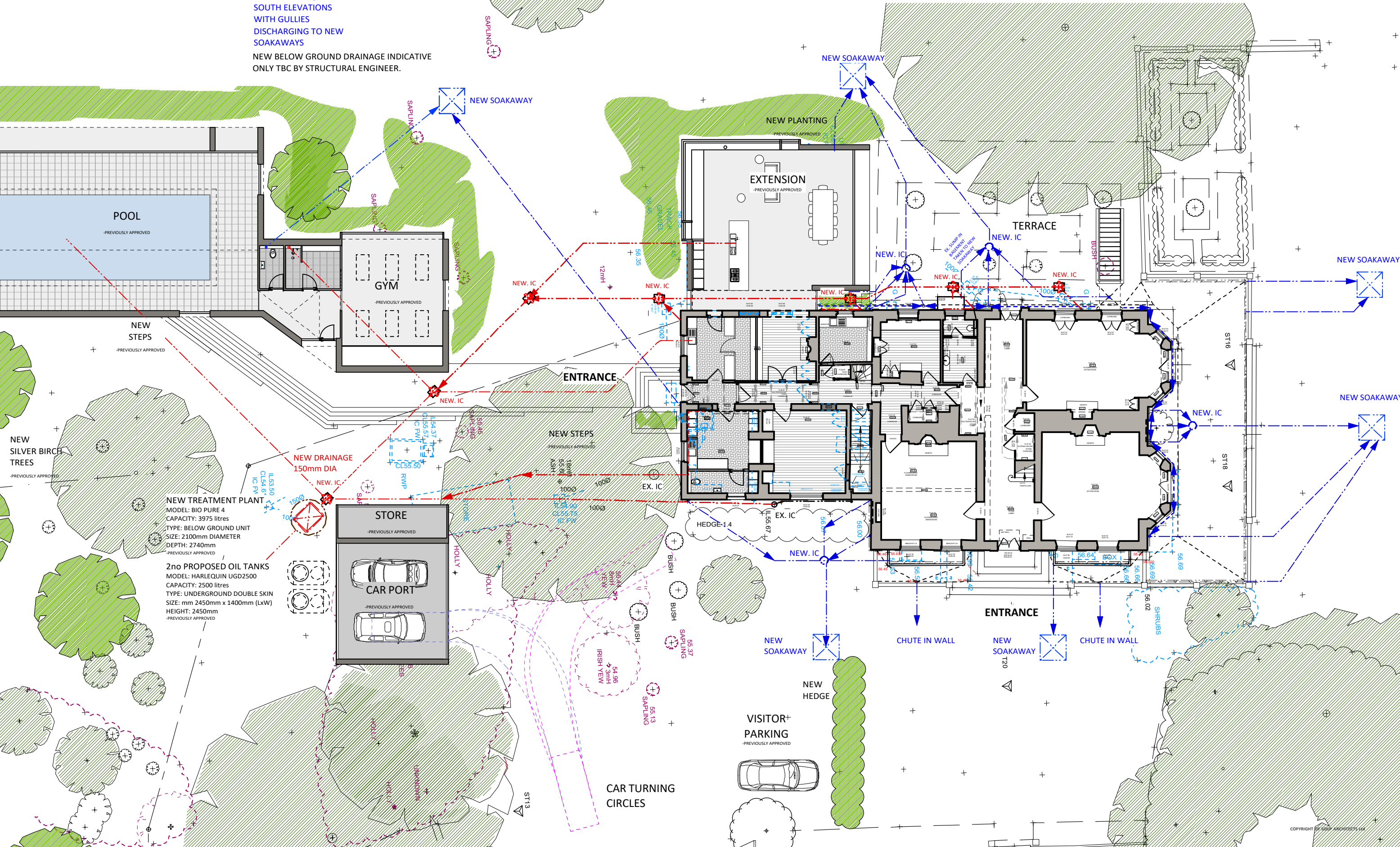
LONDON + GUERNSEY
 Studio 201 1 Thane Villas, London N7 7PH
 T 020 7354 1729
 E studio@souparchitects.com

THE OLD RECTORY
 THE STREET, SUFFOLK

RIBA STAGE 2 - PLANNING
 JANUARY 2023

MAIN HOUSE + POOL HOUSE / GYM + GARAGE
 PROPOSED BELOW GROUND SERVICES/DRAINAGE

SCALE 1:200 @ A3
 417_061_PL02



NEW TREATMENT PLANT
 MODEL: BIO PURE 4
 CAPACITY: 3975 litres
 TYPE: BELOW GROUND UNIT
 SIZE: 2100mm DIAMETER
 DEPTH: 2740mm
 -PREVIOUSLY APPROVED

2no PROPOSED OIL TANKS
 MODEL: HARLEQUIN UGD2500
 CAPACITY: 2500 litres
 TYPE: UNDERGROUND DOUBLE SKIN
 SIZE: mm 2450mm x 1400mm (LxW)
 HEIGHT: 2450mm
 -PREVIOUSLY APPROVED

