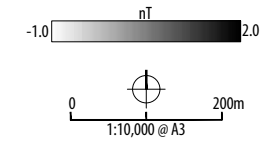


- ▭ design freeze survey area
- ▭ previous corridor survey area
- ▭ CCS Scheme Geophysical Survey (ASWYAS 2012)
- ▭ AP and LiDAR assessment (Deegan 2021)
- ▭ HER data



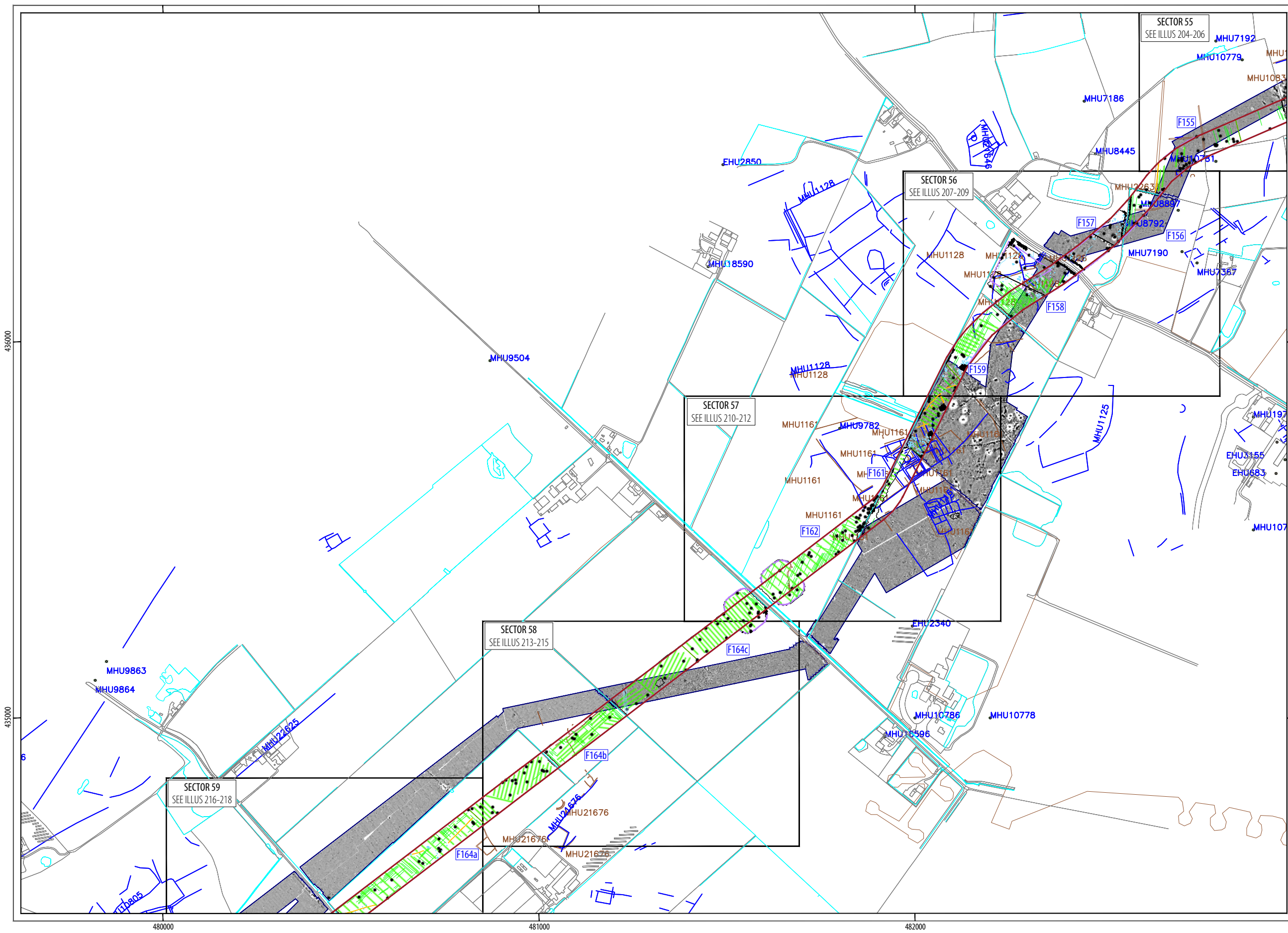
PROJECT SEGL21
Scotland England Green Link 2
North Yorkshire and
East Yorkshire

CLIENT AECOM

**HEADLAND
ARCHAEOLOGY**

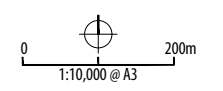
Headland Archaeology Yorkshire & North
Units 23-25 | Acorn Business Centre | Balme Road
Cleckheaton | BD19 4EZ
t 0127 493 8019
www.headlandarchaeology.com

ILLUS 28 Processed greyscale magnetometer data; Overview 14



	design freeze survey area
	previous corridor survey area
	CCS Scheme Geophysical Survey (ASWYAS 2012)
	AP and LiDAR assessment (Deegan 2021)
	HER data

TYPE OF ANOMALY	INTERPRETATION	
	dipolar isolated	ferrous material
	magnetic disturbance	ferrous material
	dipolar linear	service pipe
	linear trend	agricultural
	linear trend	field drain
	linear	former field boundary
	linear trend	geological variation
	magnetic enhancement	geology
	magnetic enhancement	archaeology?



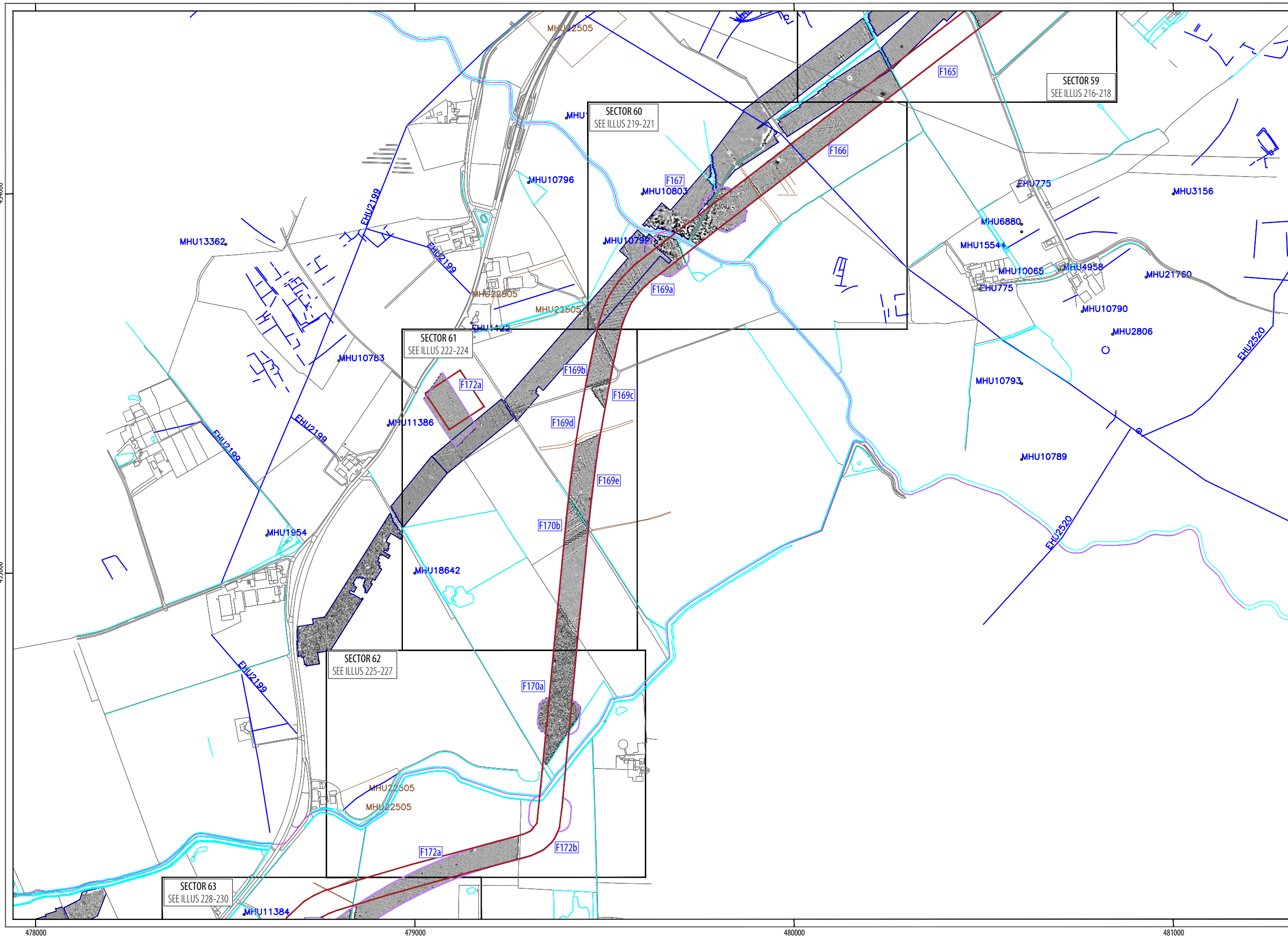
PROJECT SEGL21
Scotland England Green Link 2
North Yorkshire and
East Yorkshire

CLIENT AECOM

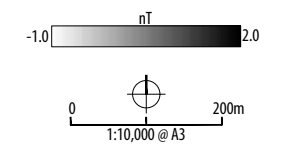
**HEADLAND
ARCHAEOLOGY**

Headland Archaeology Yorkshire & North
Units 23-25 | Acorn Business Centre | Balme Road
Cleckheaton | BD19 4EZ
t 0127 493 8019
w www.headlandarchaeology.com

ILLUS 29 Interpretation of magnetometer data; Overview 14



- ▭ design freeze survey area
- ▭ previous corridor survey area
- ▭ CCS Scheme Geophysical Survey (ASWYAS 2012)
- ▭ AP and LiDAR assessment (Deegan 2021)
- ▭ HER data



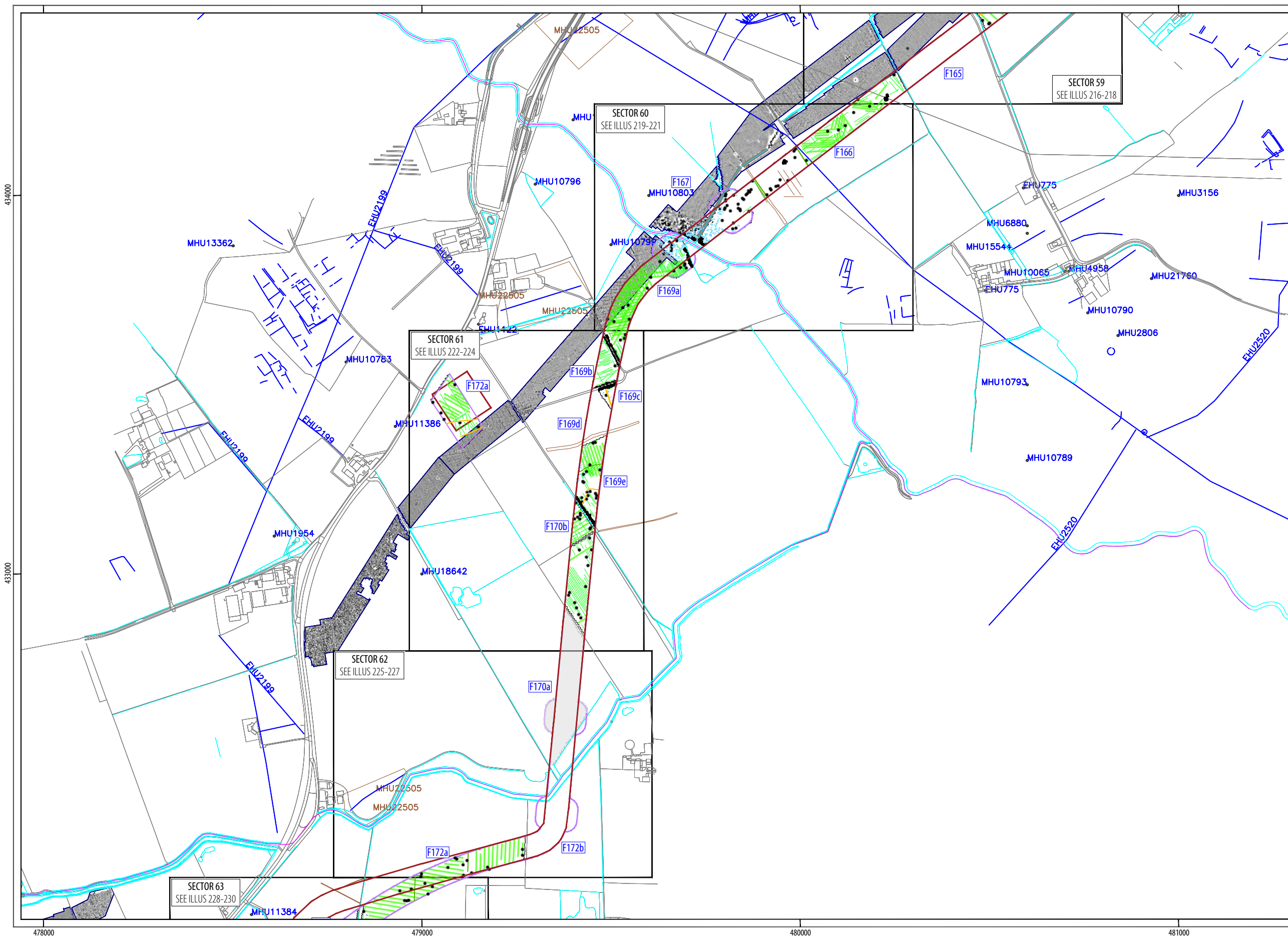
PROJECT SEGL21
Scotland England Green Link 2
North Yorkshire and
East Yorkshire

CLIENT AECOM

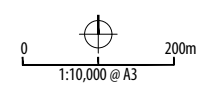
**HEADLAND
ARCHAEOLOGY**

Headland Archaeology Yorkshire & North
Units 23-25 | Acorn Business Centre | Balme Road
Cleckheaton | BD19 4EZ
t 0127 493 8019
www.headlandarchaeology.com

ILLUS 30 Processed greyscale magnetometer data; Overview 15



- ▭ design freeze survey area
 - ▭ previous corridor survey area
 - ▭ CCS Scheme Geophysical Survey (ASWYAS 2012)
 - ▭ AP and LiDAR assessment (Deegan 2021)
 - ▭ HER data
- | TYPE OF ANOMALY | INTERPRETATION |
|---|-----------------------|
| ● dipolar isolated | ferrous material |
| ● magnetic disturbance | ferrous material |
| ● magnetic disturbance | greenwaste |
| ● magnetic enhancement | uncertain |
| — linear trend | agricultural |
| — linear trend | field drain |
| — linear | former field boundary |
| — linear trend | geological variation |
| — magnetic enhancement | geology |
| — magnetic enhancement | archaeology? |



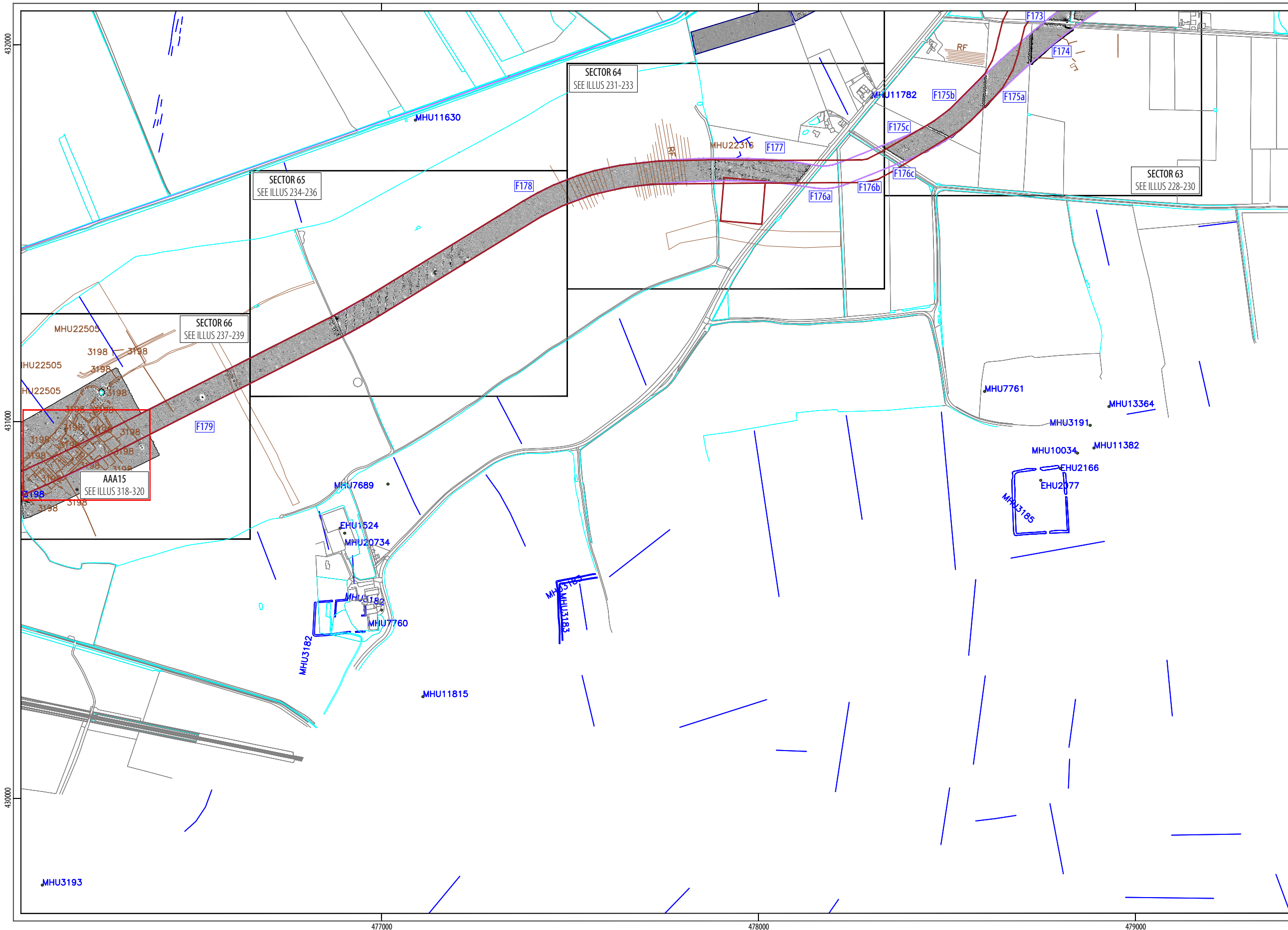
PROJECT SEGL21
Scotland England Green Link 2
North Yorkshire and
East Yorkshire

CLIENT AECOM

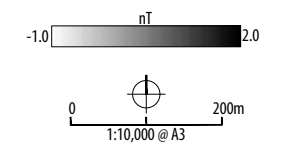


Headland Archaeology Yorkshire & North
Units 23-25 | Acorn Business Centre | Balme Road
Cleckheaton | BD19 4EZ
t 0127 493 8019
w www.headlandarchaeology.com

ILLUS 31 Interpretation of magnetometer data; Overview 15



- ▭ design freeze survey area
- ▭ previous corridor survey area
- ▭ CCS Scheme Geophysical Survey (ASWYAS 2012)
- ▭ AP and LiDAR assessment (Deegan 2021)
- ▭ HER data

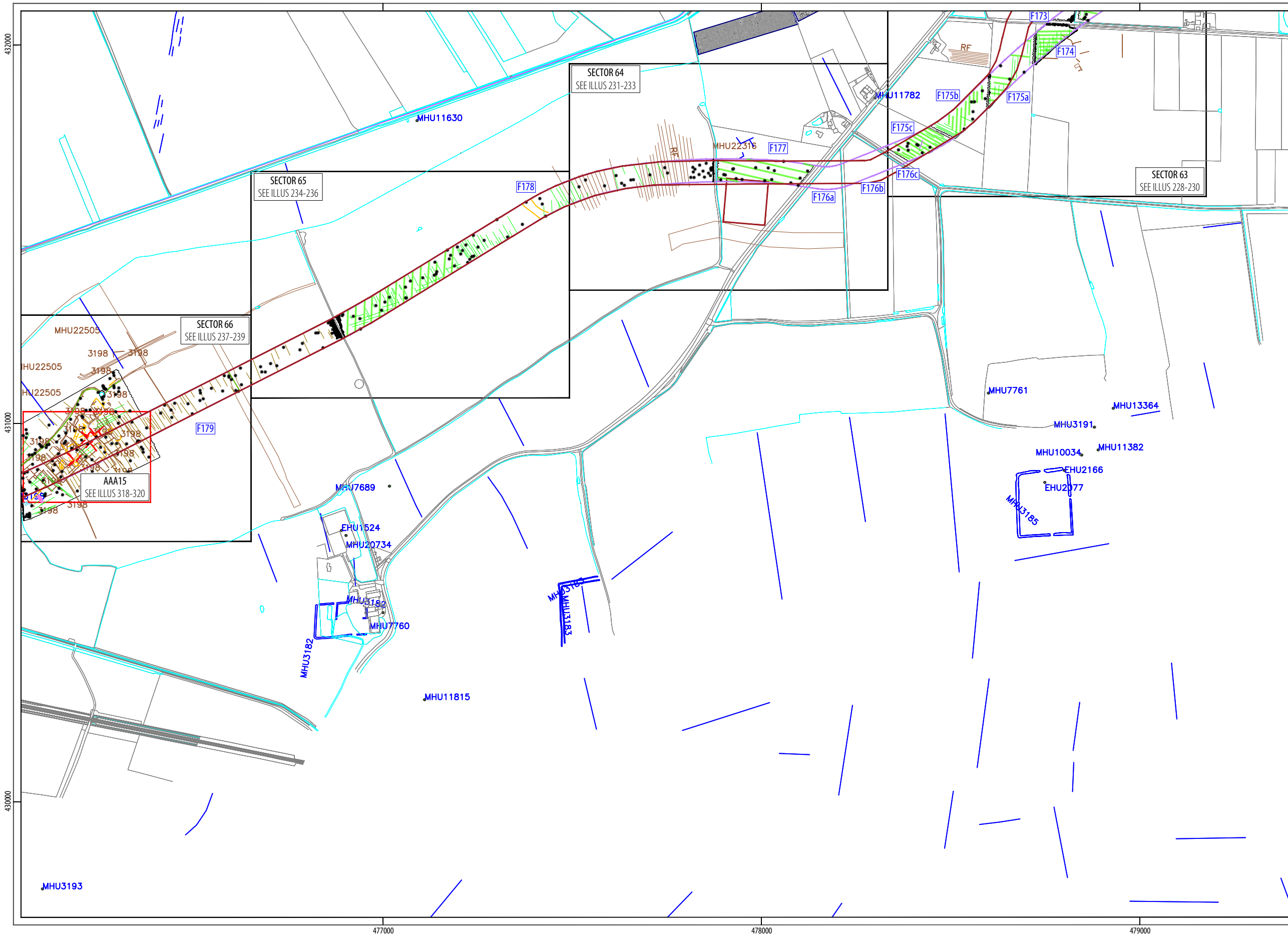


PROJECT SEGL21
Scotland England Green Link 2
North Yorkshire and
East Yorkshire

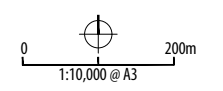
CLIENT AECOM

**HEADLAND
ARCHAEOLOGY**

Headland Archaeology Yorkshire & North
Units 23-25 | Acorn Business Centre | Balme Road
Cleckheaton | BD19 4EZ
t 0127 493 8019
www.headlandarchaeology.com



- ▭ design freeze survey area
 - ▭ previous corridor survey area
 - ▭ CCS Scheme Geophysical Survey (ASWYAS 2012)
 - ▭ AP and LiDAR assessment (Deegan 2021)
 - ▭ HER data
- | TYPE OF ANOMALY | INTERPRETATION |
|--|-----------------------|
| ● dipolar isolated | ferrous material |
| ● magnetic disturbance | ferrous material |
| ● magnetic disturbance | quarrying |
| ● magnetic enhancement | uncertain |
| — linear trend | ridge and furrow |
| — linear trend | agricultural |
| — linear trend | field drain |
| — linear | former field boundary |
| ● magnetic enhancement | geology |
| ● magnetic enhancement | archaeology? |
| ● magnetic enhancement | archaeology |



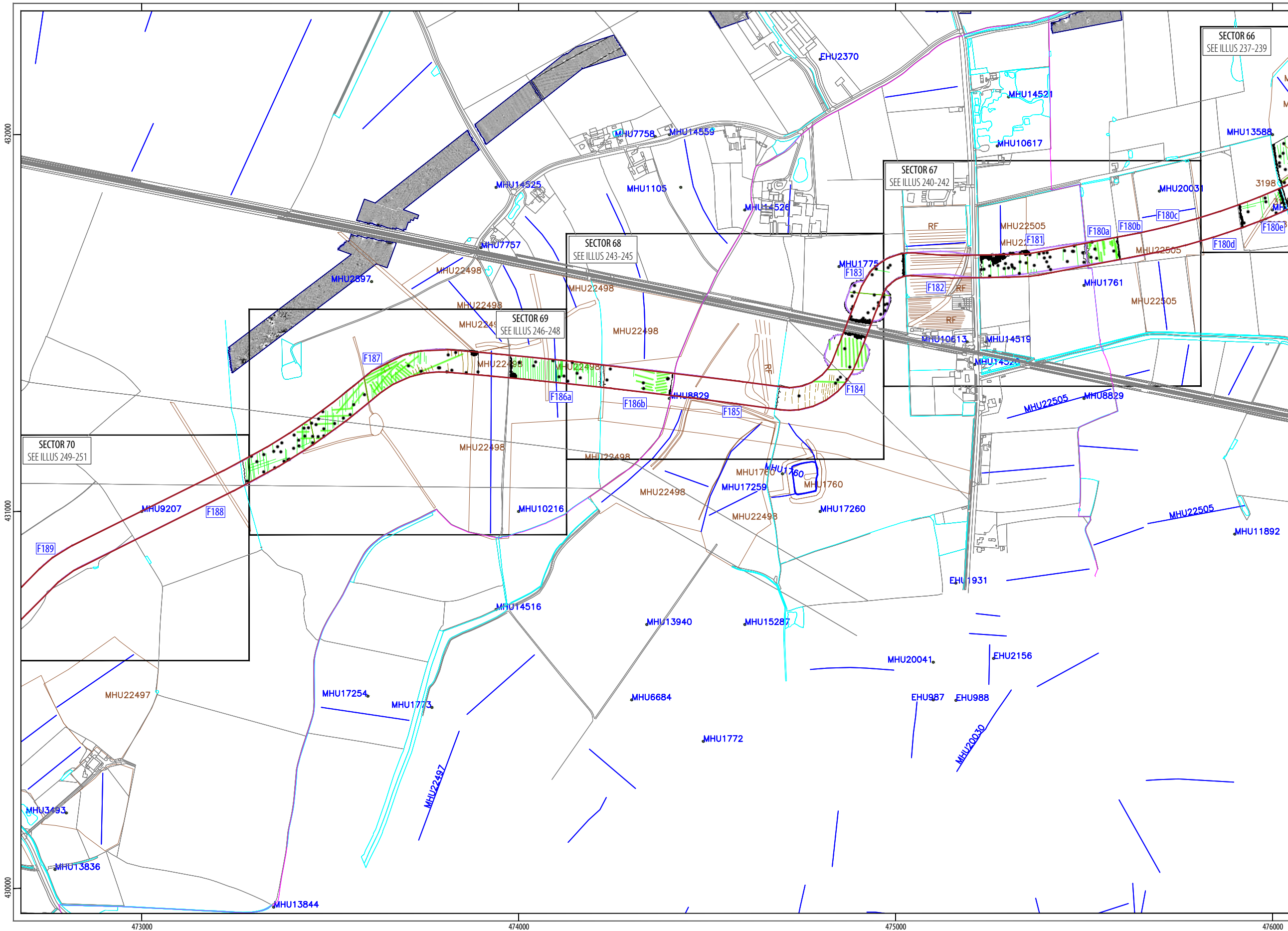
PROJECT SEGL21
Scotland England Green Link 2
North Yorkshire and
East Yorkshire

CLIENT AECOM

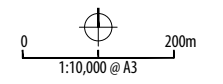
**HEADLAND
ARCHAEOLOGY**

Headland Archaeology Yorkshire & North
Units 23-25 | Acorn Business Centre | Balme Road
Cleckheaton | BD19 4EZ
t 0127 493 8019
www.headlandarchaeology.com

ILLUS 33 Interpretation of magnetometer data; Overview 16



- ▭ design freeze survey area
 - ▭ previous corridor survey area
 - ▭ CCS Scheme Geophysical Survey (ASWYAS 2012)
 - ▭ AP and LiDAR assessment (Deegan 2021)
 - ▭ HER data
- | TYPE OF ANOMALY | INTERPRETATION |
|------------------------|-----------------------|
| ● dipolar isolated | ferrous material |
| ■ magnetic disturbance | ferrous material |
| — linear trend | ridge and furrow |
| — linear trend | agricultural |
| — linear trend | field drain |
| — linear | former field boundary |



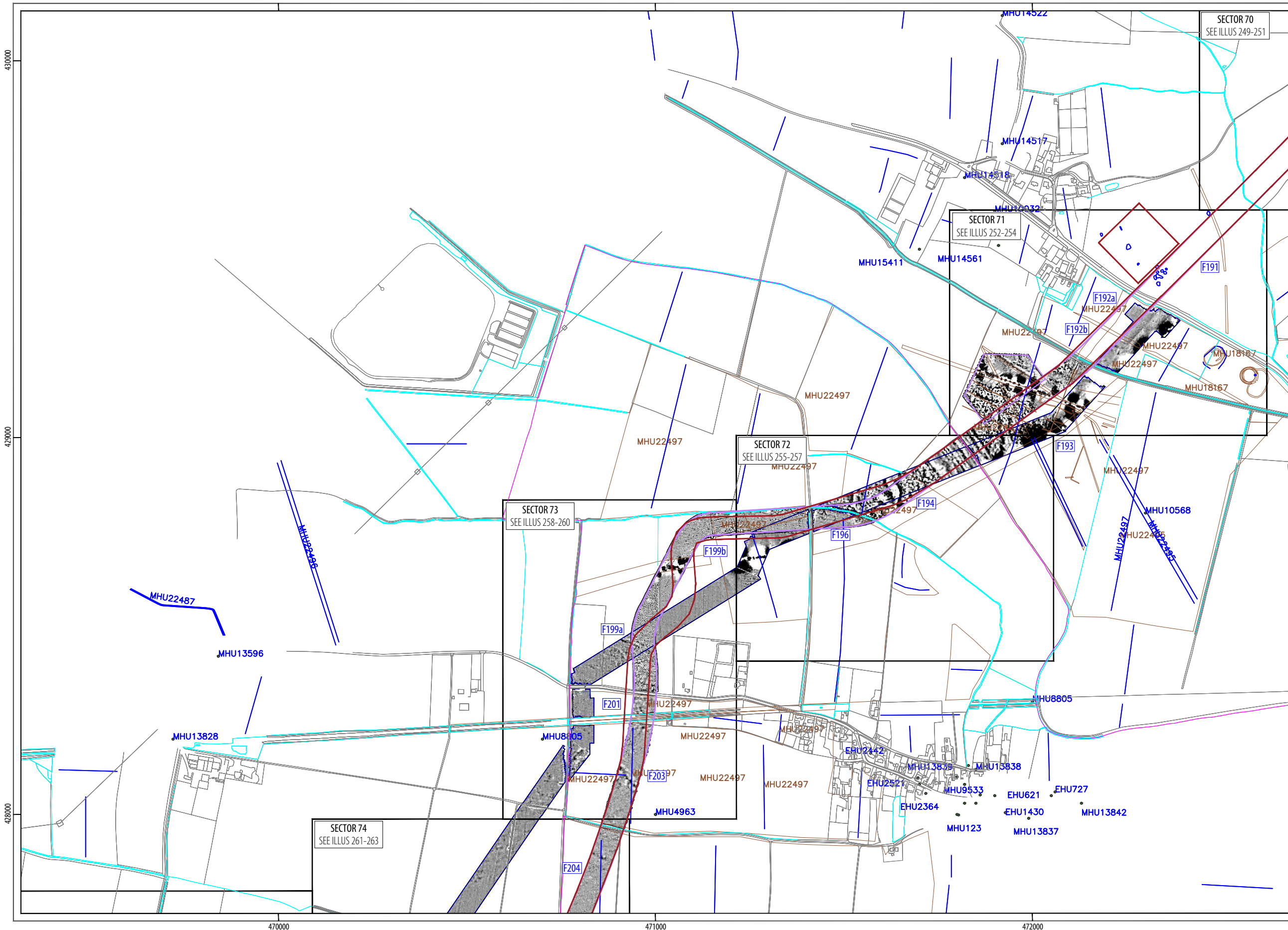
PROJECT SEGL21
 Scotland England Green Link 2
 North Yorkshire and
 East Yorkshire

CLIENT AECOM

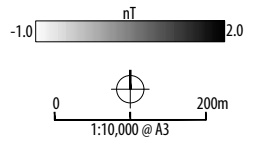


Headland Archaeology Yorkshire & North
 Units 23-25 | Acorn Business Centre | Balme Road
 Cleckheaton | BD19 4EZ
 t 0127 493 8019
 w www.headlandarchaeology.com

ILLUS 35 Interpretation of magnetometer data; Overview 17



- ▭ design freeze survey area
- ▭ previous corridor survey area
- ▭ CCS Scheme Geophysical Survey (ASWYAS 2012)
- ▭ AP and LiDAR assessment (Deegan 2021)
- ▭ HER data

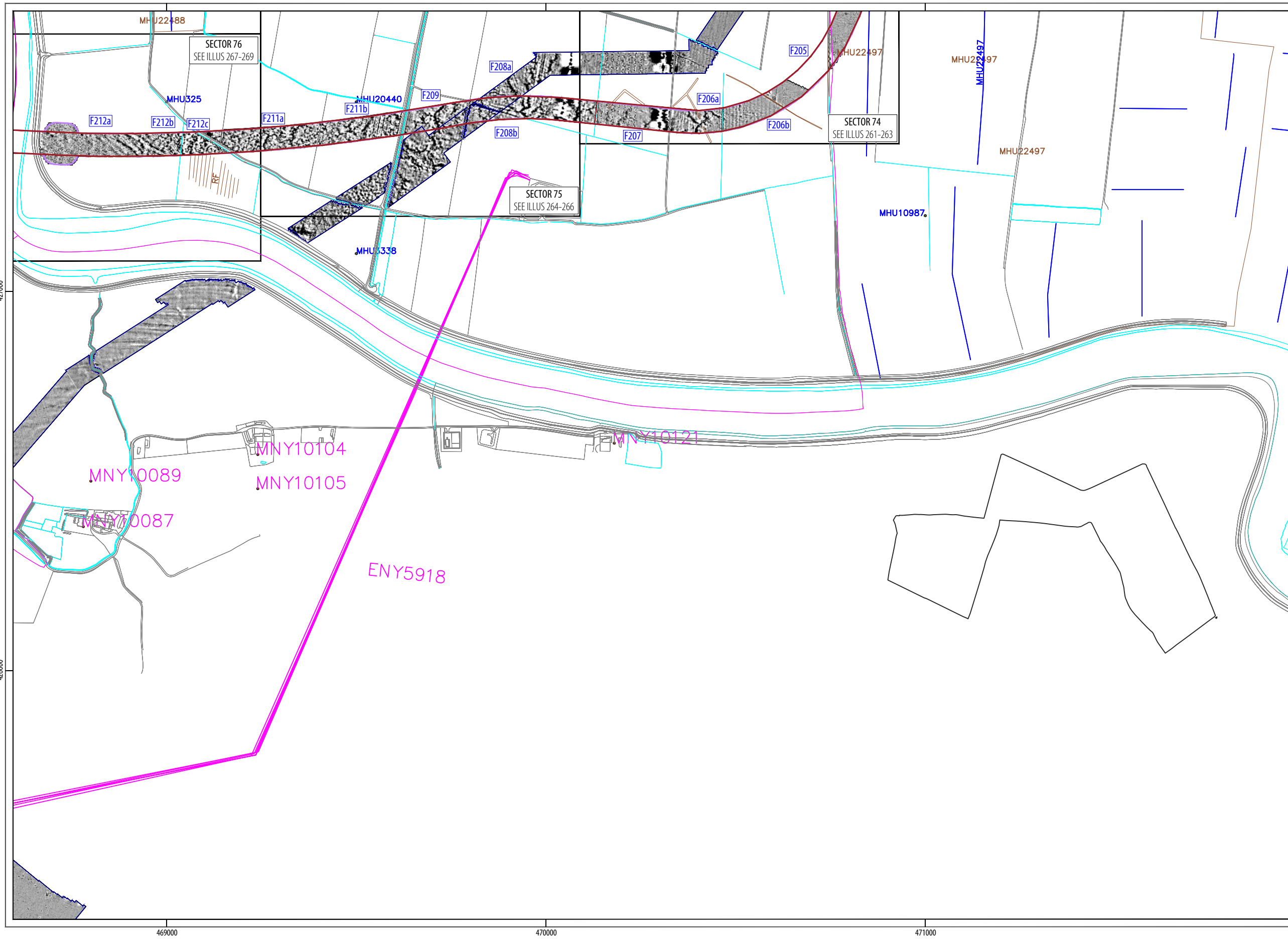


PROJECT SEGL21
Scotland England Green Link 2
North Yorkshire and
East Yorkshire

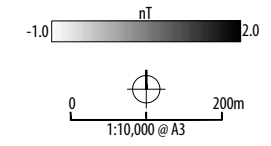
CLIENT AECOM



Headland Archaeology Yorkshire & North
Units 23-25 | Acorn Business Centre | Balme Road
Cleckheaton | BD19 4EZ
t 0127 493 8019
w www.headlandarchaeology.com



- design freeze survey area
- previous corridor survey area
- CCS Scheme Geophysical Survey (ASWYAS 2012)
- AP and LiDAR assessment (Deegan 2021)
- HER data



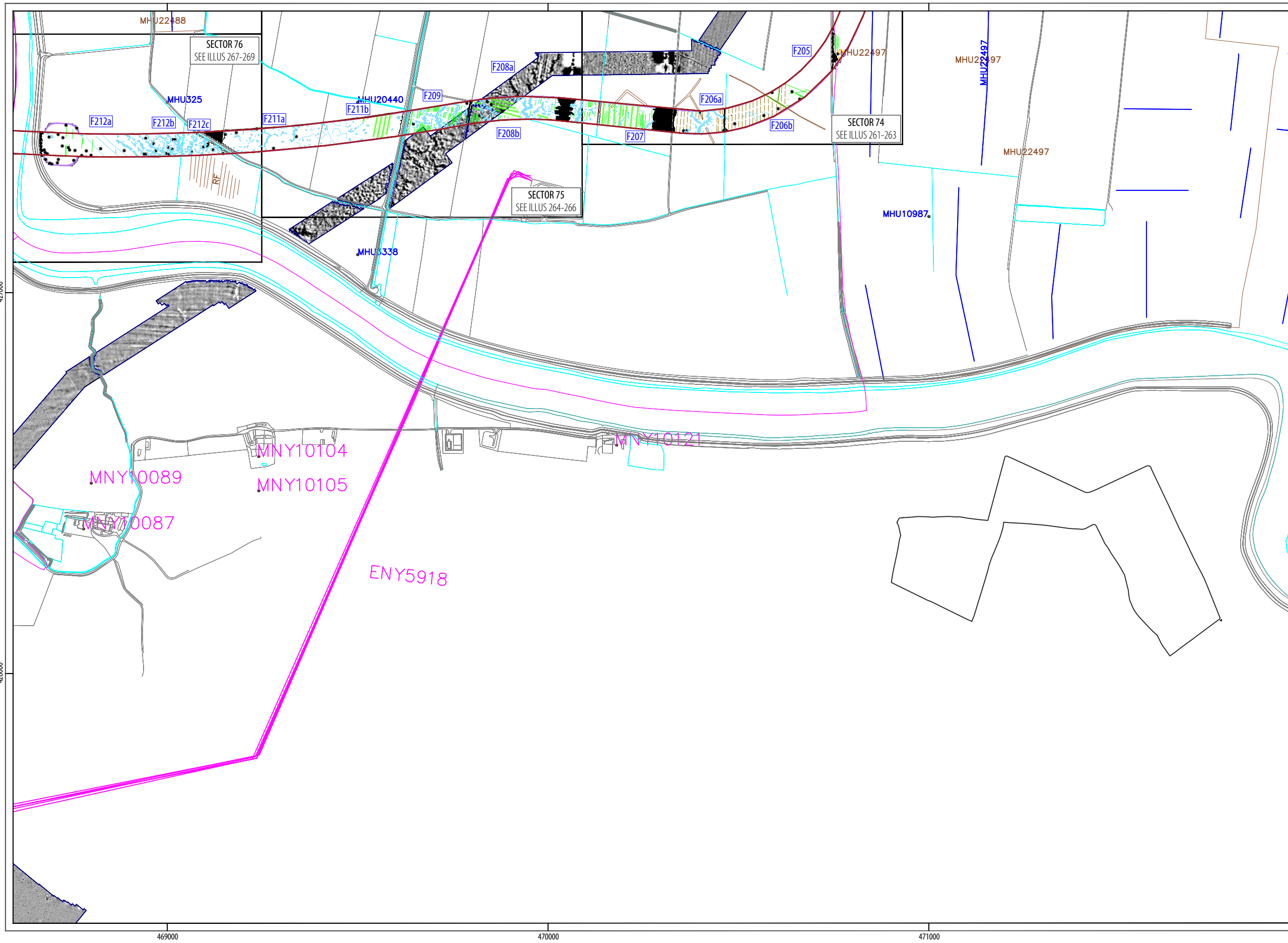
PROJECT SEGL21
Scotland England Green Link 2
North Yorkshire and
East Yorkshire

CLIENT AECOM

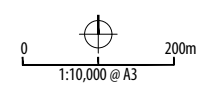


Headland Archaeology Yorkshire & North
Units 23-25 | Acorn Business Centre | Balme Road
Cleckheaton | BD19 4EZ
t 0127 493 8019
www.headlandarchaeology.com

ILLUS 38 Processed greyscale of magnetometer data; Overview 19



- design freeze survey area
 - previous corridor survey area
 - CCS Scheme Geophysical Survey (ASWYAS 2012)
 - AP and LiDAR assessment (Deegan 2021)
 - HER data
- | TYPE OF ANOMALY | INTERPRETATION |
|------------------------|-----------------------|
| ● dipolar isolated | ferrous material |
| ■ magnetic disturbance | ferrous material |
| — dipolar linear | service pipe |
| — linear trend | ridge and furrow |
| — linear trend | agricultural |
| — linear trend | field drain |
| — linear | former field boundary |
| — linear trend | geological variation |
| ⊕ magnetic enhancement | geology |
| ⊗ magnetic enhancement | archaeology? |



PROJECT SEGL21
Scotland England Green Link 2
North Yorkshire and
East Yorkshire

CLIENT AECOM

**HEADLAND
ARCHAEOLOGY**

Headland Archaeology Yorkshire & North
Units 23-25 | Acorn Business Centre | Balme Road
Cleckheaton | BD19 4EZ
t 0127 493 8019
w www.headlandarchaeology.com

