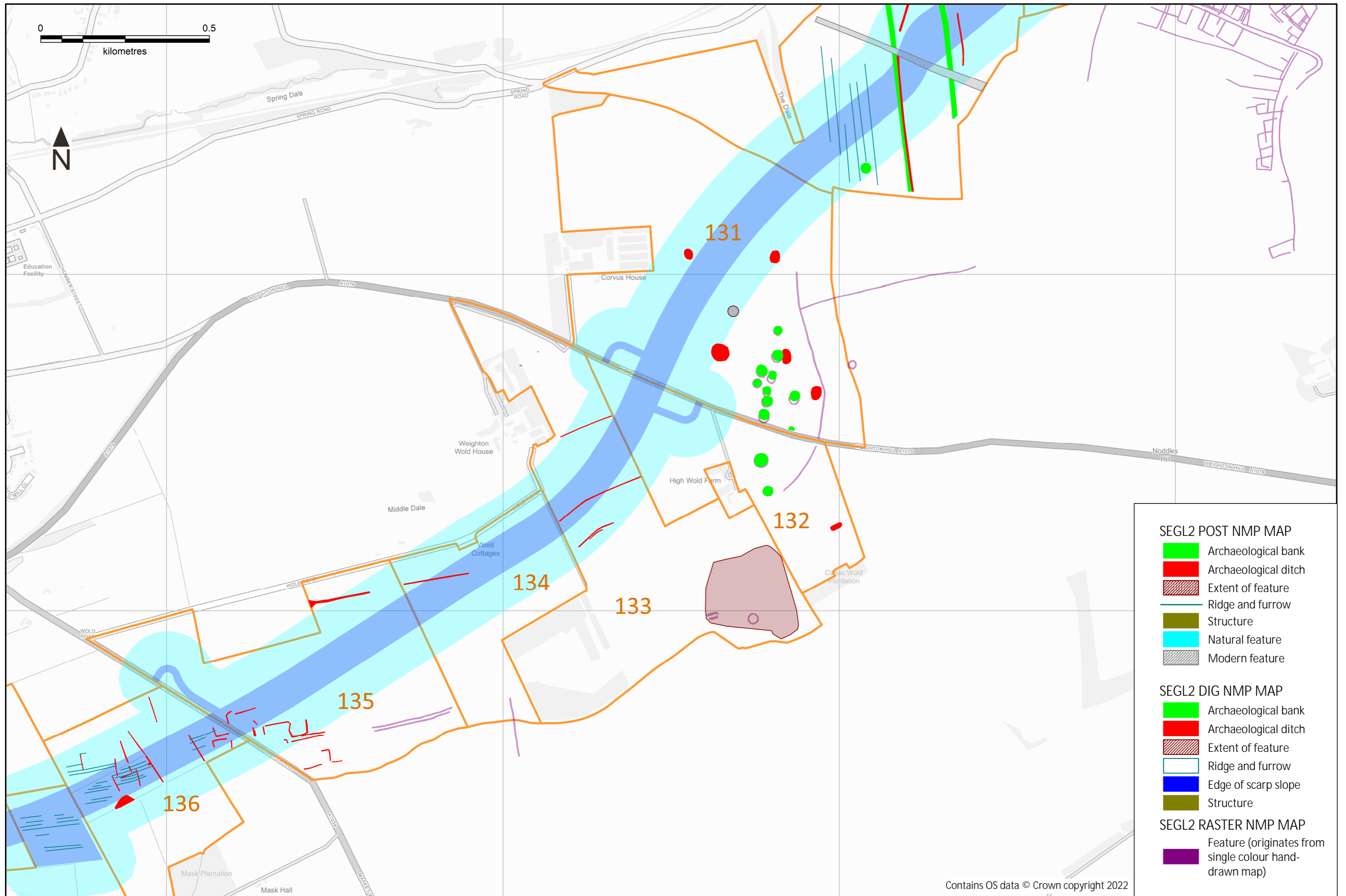


Figure 11 Overview of LiDAR and air photo mapping for the Scotland England Green Link – SEGL2 (fields 122 to 130)



Contains OS data © Crown copyright 2022

Figure 12 Overview of LiDAR and air photo mapping for the Scotland England Green Link – SEGL2 (fields 131 to 136)

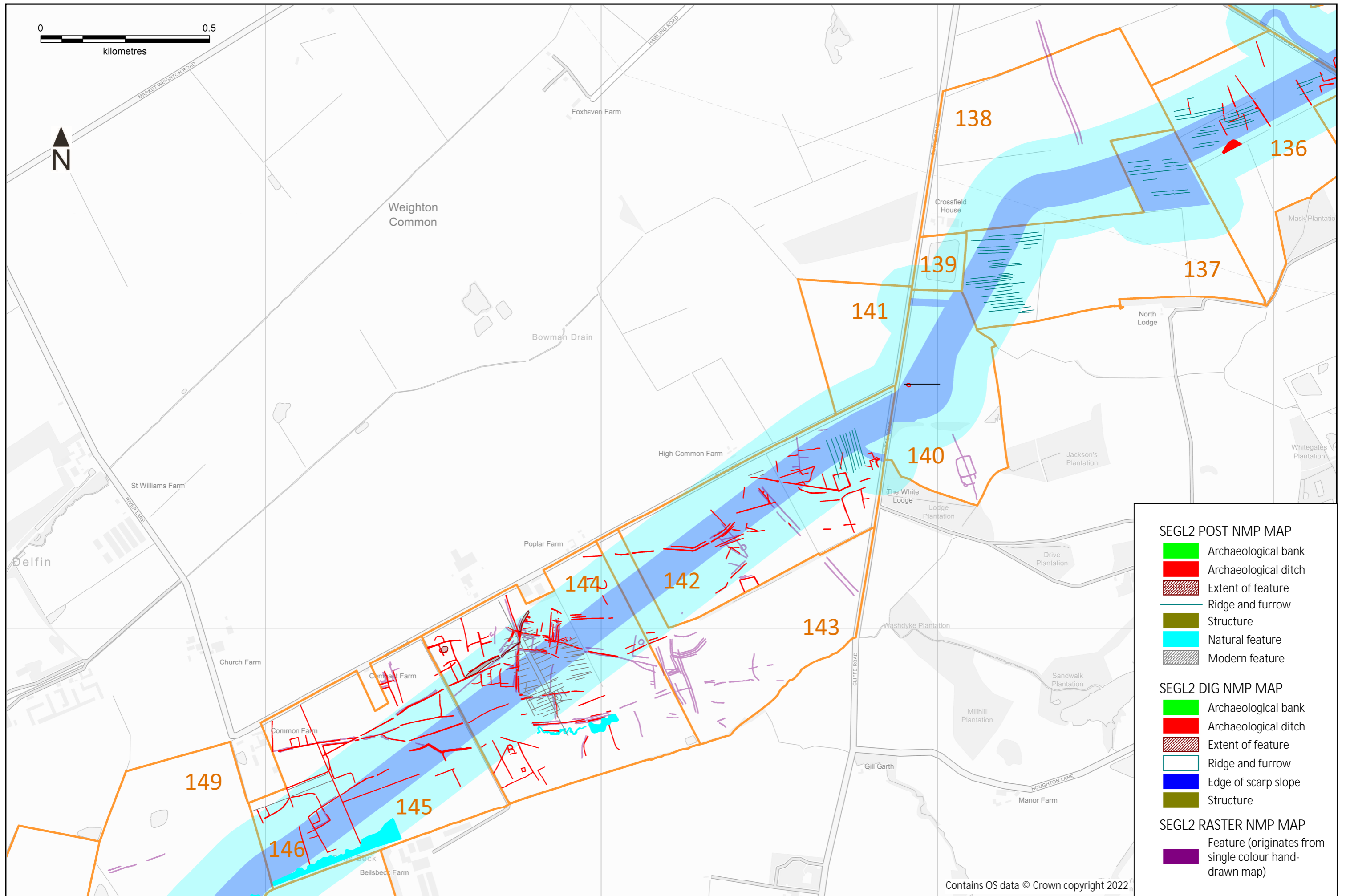


Figure 13 Overview of LiDAR and air photo mapping for the Scotland England Green Link – SEGL2 (fields 136 to 146)



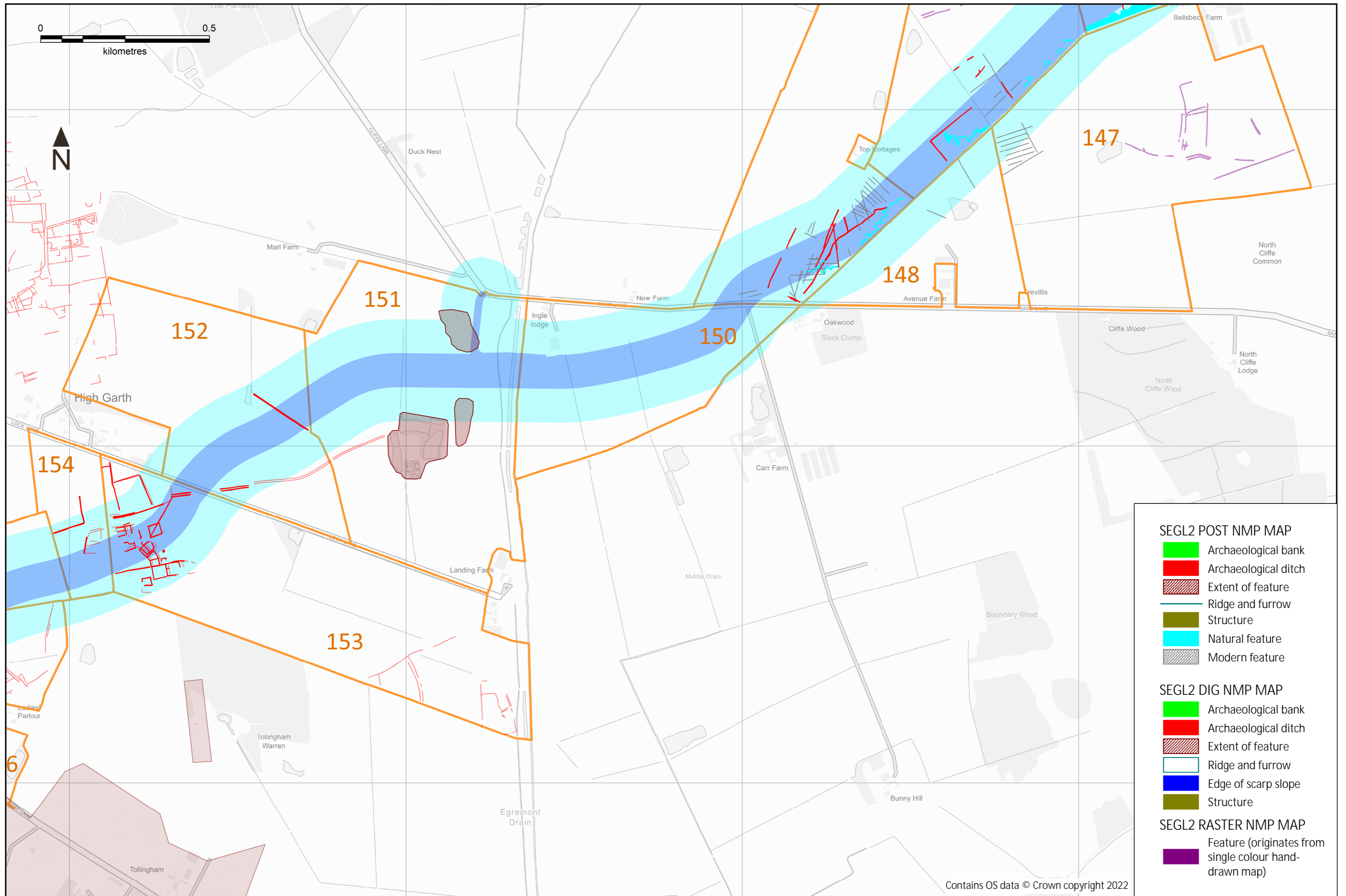


Figure 14 Overview of LiDAR and air photo mapping for the Scotland England Green Link – SEGL2 (fields 147 to 154)



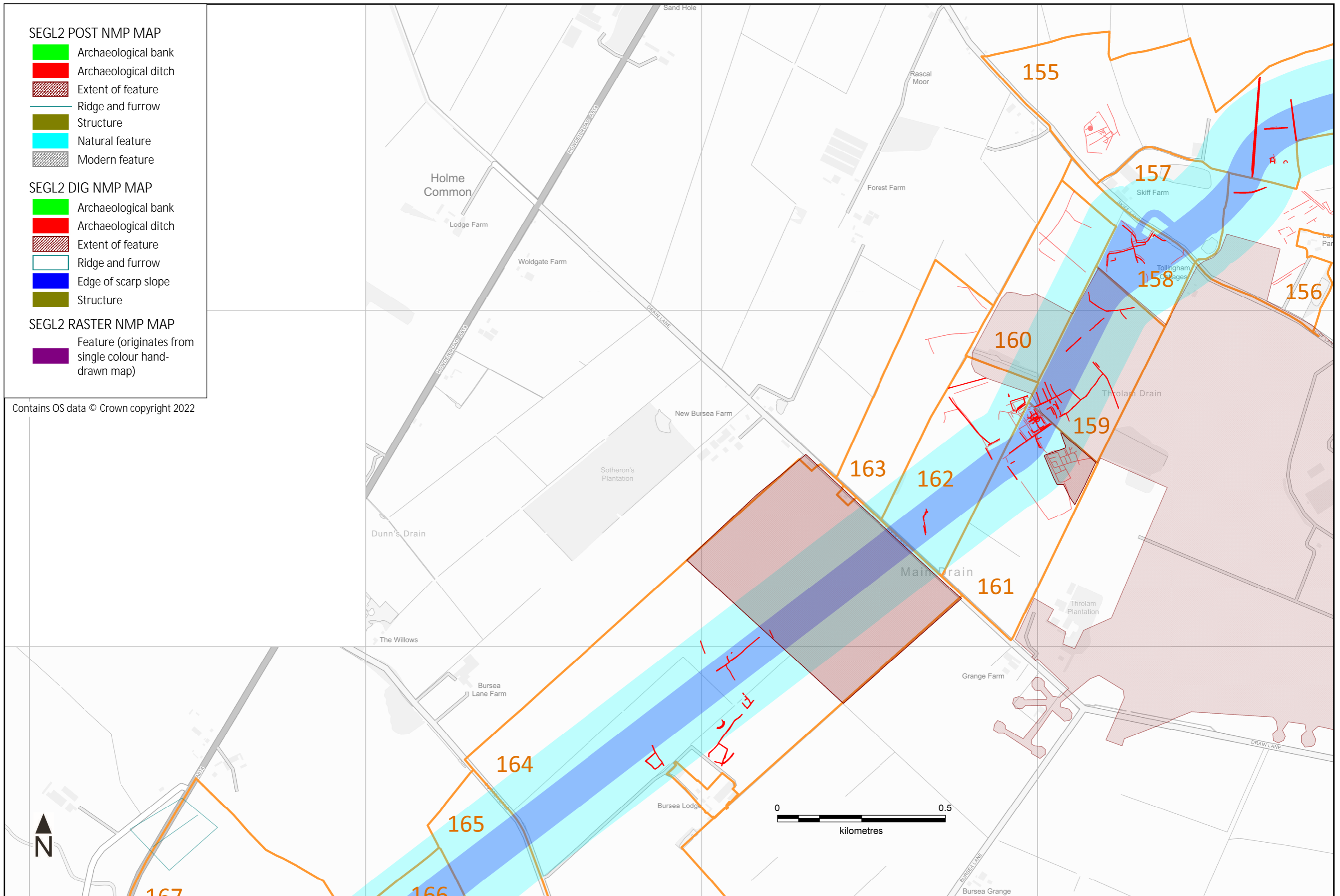


Figure 15 Overview of LiDAR and air photo mapping for the Scotland England Green Link – SEGL2 (fields 155 to 164)

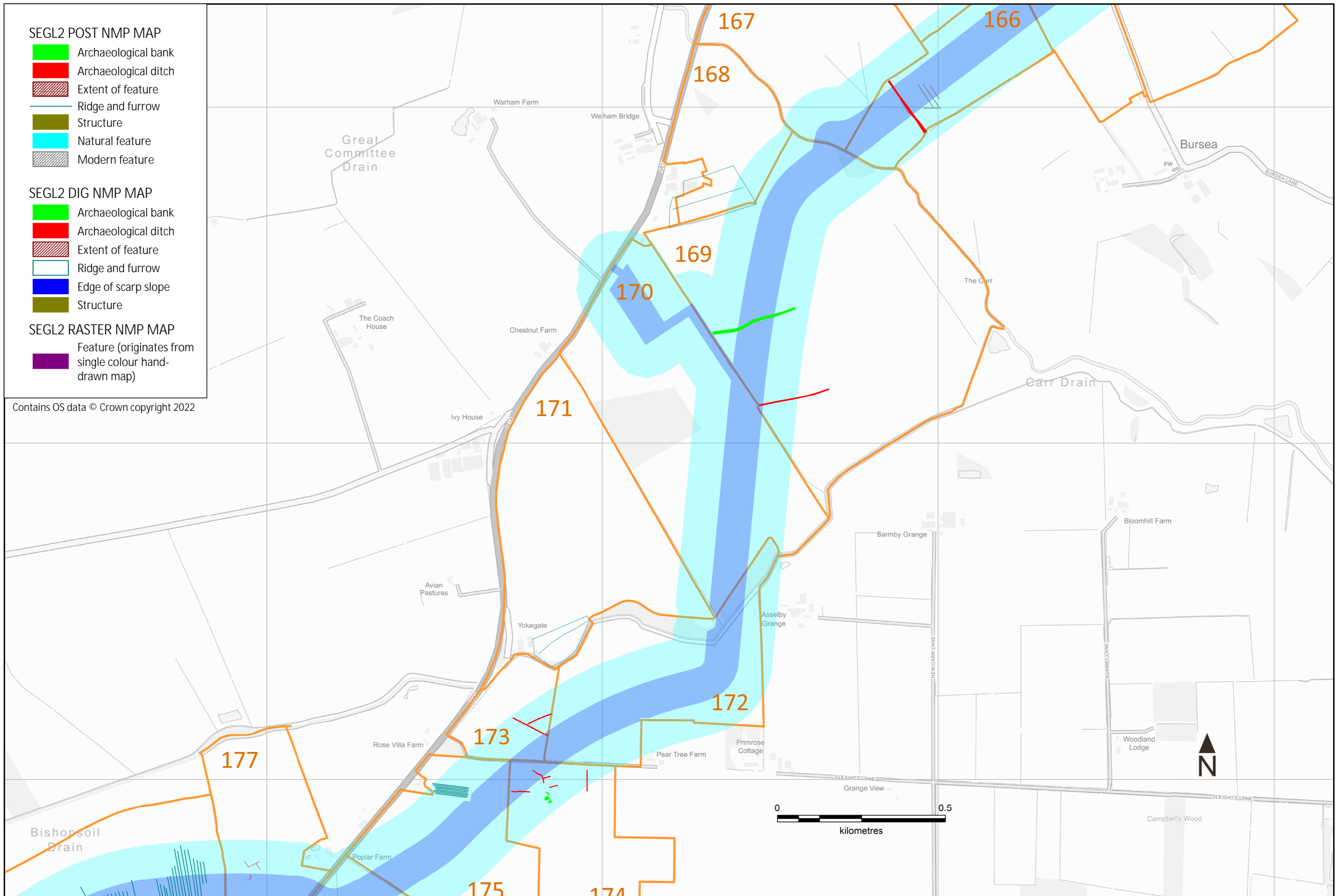


Figure 16 Overview of LiDAR and air photo mapping for the Scotland England Green Link – SEGL2 (fields 167 to 177)

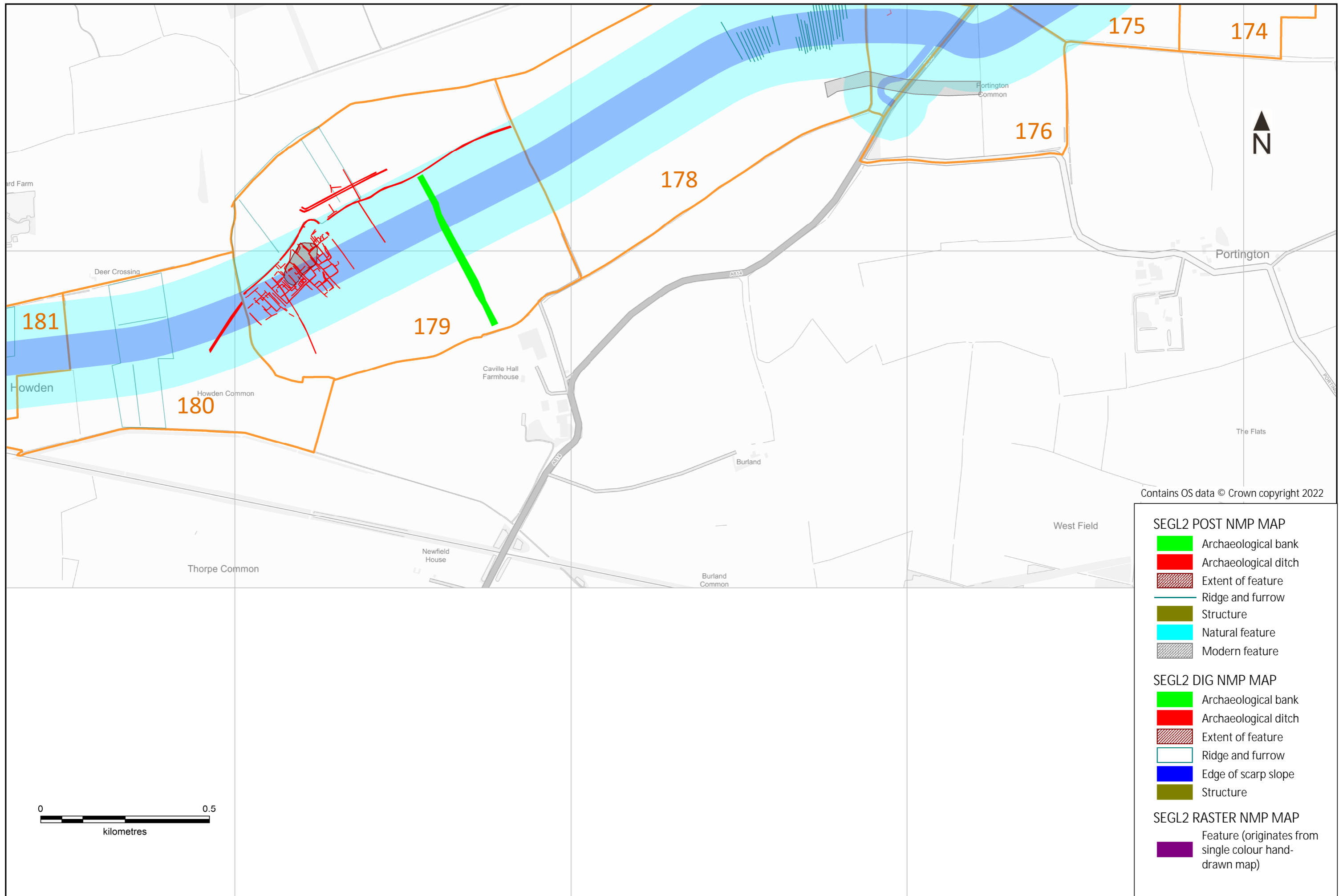


Figure 17 Overview of LiDAR and air photo mapping for the Scotland England Green Link – SEGL2 (fields 178 to 180)



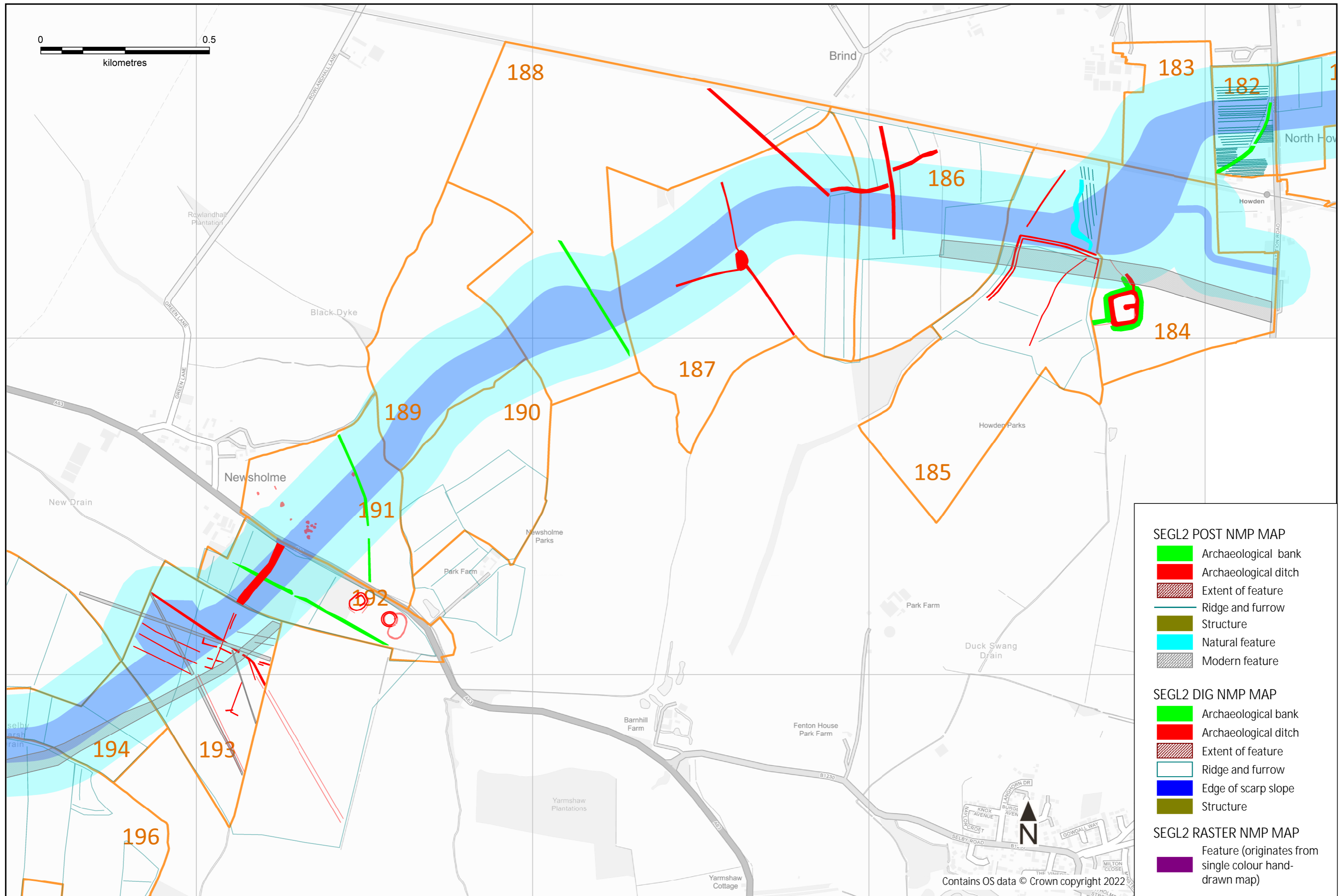


Figure 18 Overview of LiDAR and air photo mapping for the Scotland England Green Link – SEGL2 (fields 182 to 194)



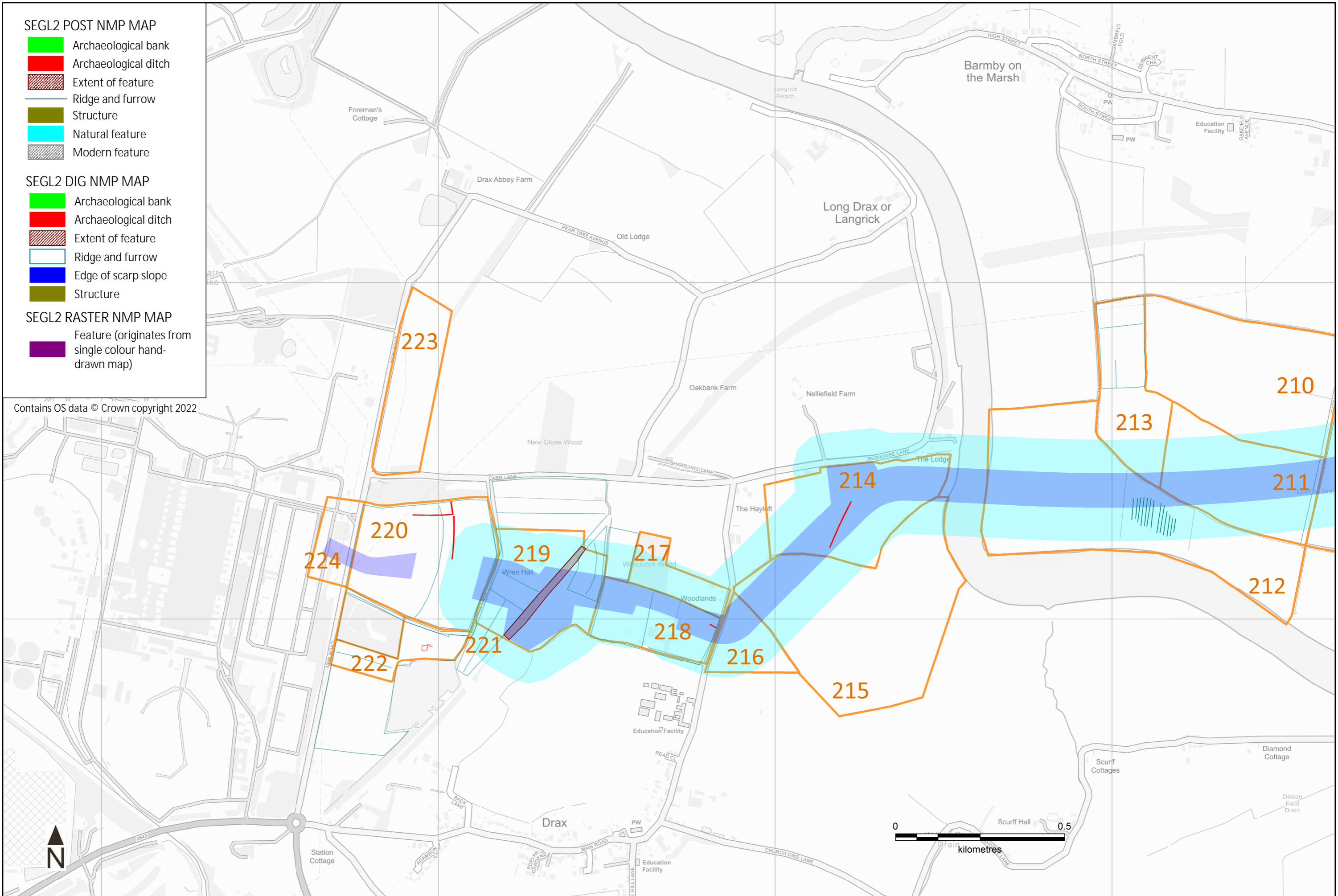


Figure 20 Overview of LiDAR and air photo mapping for the Scotland England Green Link – SEGL2 (fields 210 to 223)