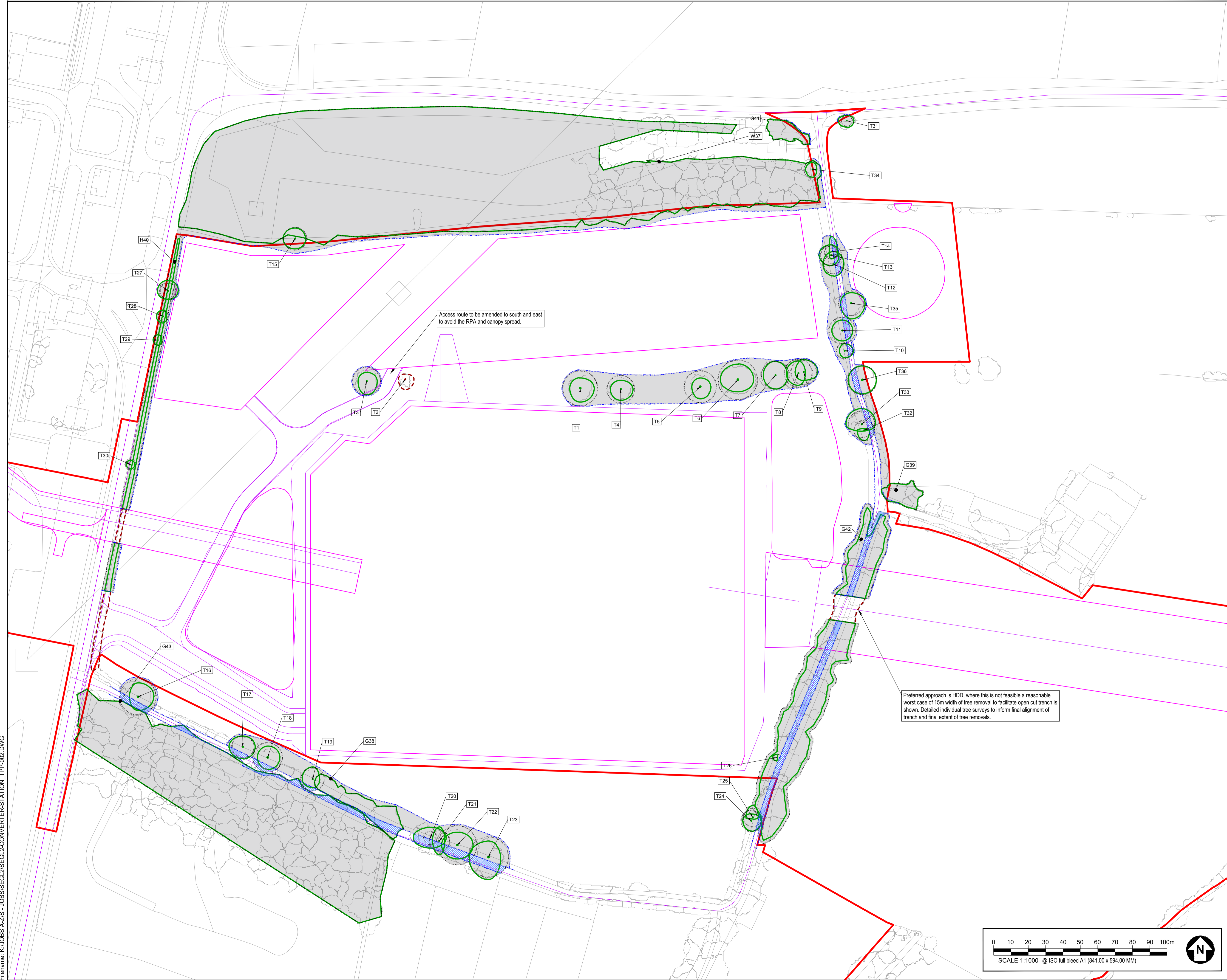


- TREE CATEGORIES AS DEFINED BY BS 5837:2012
- TREE LOCATIONS ARE BASED ON THE TOPOGRAPHICAL SURVEY, AERIAL IMAGERY, AND GPS CO-ORDINATES FROM ON SITE WALKOVER.
- * INDICATES A TREE / GROUP WHOSE POSITION IS APPROXIMATE AS BASED UPON AERIAL PHOTOGRAPHY AND ON SITE OBSERVATIONS.
- PLANS SHOULD BE READ IN CONJUNCTION WITH THE AECOM ARBORCULTURAL REPORT.
- THE ORIGINAL OF THIS DRAWING WAS PRODUCED IN COLOUR - A MONOCHROME COPY SHOULD NOT BE RELIED UPON.
- DRAWING REFERENCES:
 unity_electrical_division_region.dwg
 Route Corridor.dwg
 TPO Markup.dwg
 Priority_Habitat_Inventory_England_North.dwg
 Ancient_Woodland.dwg
 SitesOfSpecialScientificInterest.dwg
 OS_MasterMap_683274_TopographicLine.dwg
 01-101545-1_AECOM_NTM_V2_Canopy_Polygons.dwg
 MOTT5_Prefered_DC_Cable_Route_rev10.dwg DESIGN_FREEZE5.dwg
 MOTT5_Prefered_DC_Cable_Route_rev10_pl_DESIGN_FREEZE5(002).dwg



KEY

- SITE BOUNDARY
- EXISTING TREE, GROUP, WOODLAND, OR HEDGE TO BE RETAINED
- EXISTING TREE, GROUP, WOODLAND, OR HEDGE TO BE REMOVED
- ROOT PROTECTION AREA OF RETAINED TREES (AS DEFINED BY BS 5837:2012)
- TREE PROTECTION FENCING
- CONSTRUCTION EXCLUSION ZONE (TRACKING OF PLANT, MATERIALS STORAGE, EXCAVATION AND ALL OTHER CONSTRUCTION ACTIVITIES ARE EXCLUDED WITHIN THESE AREAS FOR THE PURPOSES OF PROTECTING TREE HEALTH)
- CONSTRUCTION WORKING ZONE (MANAGED CONSTRUCTION PROCESSES PERMITTED IN ACCORDANCE WITH THE PRINCIPLES SET OUT WITHIN THE ARBORCULTURAL IMPACT ASSESSMENT)
- PROPOSED DEVELOPMENT LAYOUT (BASED UPON DRAWING REFERENCES LISTED IN THE GENERAL NOTES SECTION)

ISSUE/REVISION

NO	DATE	DESCRIPTION
P01	25/05/22	FIRST ISSUE
IR		

DRAWING STATUS

ISSUE

PROJECT NUMBER

60633154

SHEET TITLE

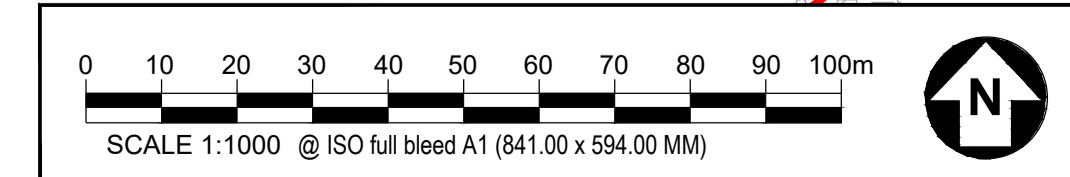
CONVERTER STATION
 TREE PROTECTION PLAN
 (SHEET 01)

SHEET NUMBER

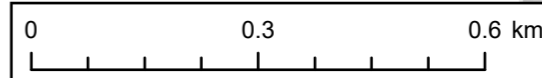
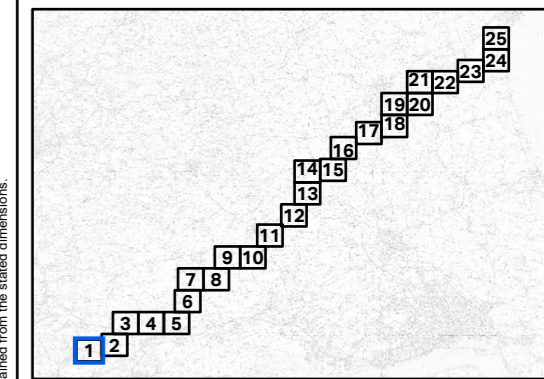
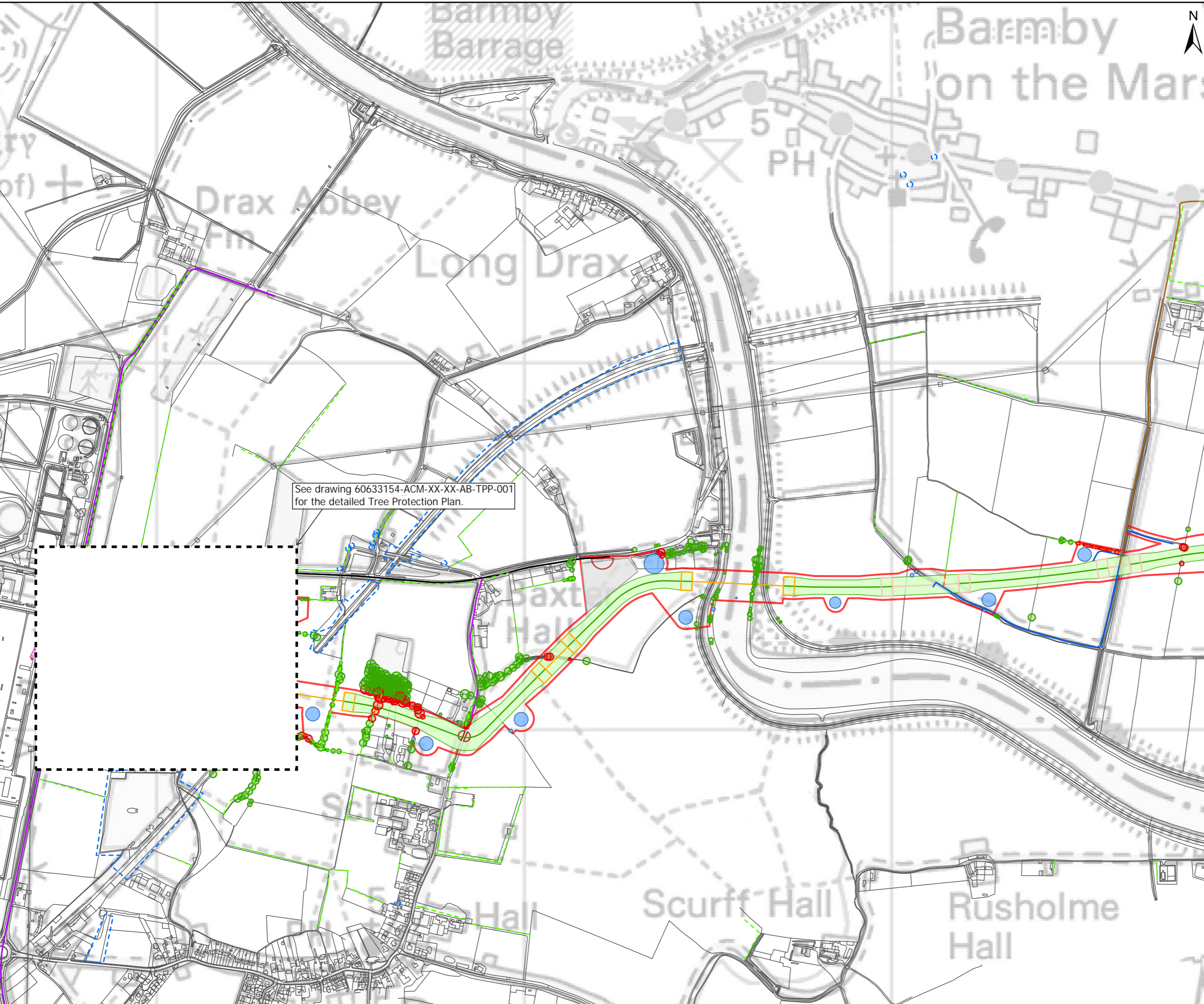
60633154-ACM-XX-XX-AB-TPP-001

REV.

P01



This drawing has been prepared for the use of AECOM's client. It may not be used, modified, reproduced or relied upon by third parties, except as agreed by AECOM or as required by law. AECOM accepts no responsibility, and denies any liability whatsoever, to any party that uses or relies on this drawing without AECOM's express written consent. Do not scale this document. All measurements must be obtained from the stated dimensions.



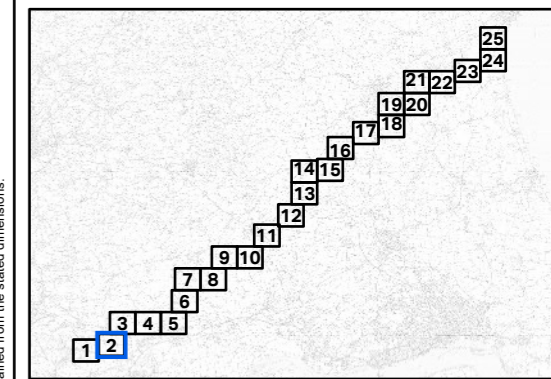
This drawing has been prepared for the use of AECOM's client. It may not be used, modified, reproduced or relied upon by third parties, except as agreed by AECOM or as required by law. AECOM accepts no responsibility, and denies any liability whatsoever, to any party that uses or relies on this drawing without AECOM's express written consent. Do not scale this document. All measurements must be obtained from the stated dimensions.

PROJECT
Scotland England Green Link 2

- KEY
- Tree Preservation Orders
 - Ecology Phase 1 Hedgerows
 - Retained
 - Removed

- National Tree Map - RPA Buffer
- Retained
 - Removed

- Haul road route outside corridor
- Indicative Public Highway Access Route
- Mobilisation and Light Vehicle Access Route
- Off Highway Access Route for Mobilisation
- Converter Station Access
- Converter Station Earthworks
- HDD
- HDD - Potential to open cut watercourse
- HVAC
- HVDC
- 60m Wide LOD
- Attenuation Pond
- Bellmouth
- Combined Drainage
- Construction Compound
- Converter Station Extent
- Converter Station Purchase Area
- HVAC 50m swathe
- HVDC 40m swathe
- OS_MasterMap

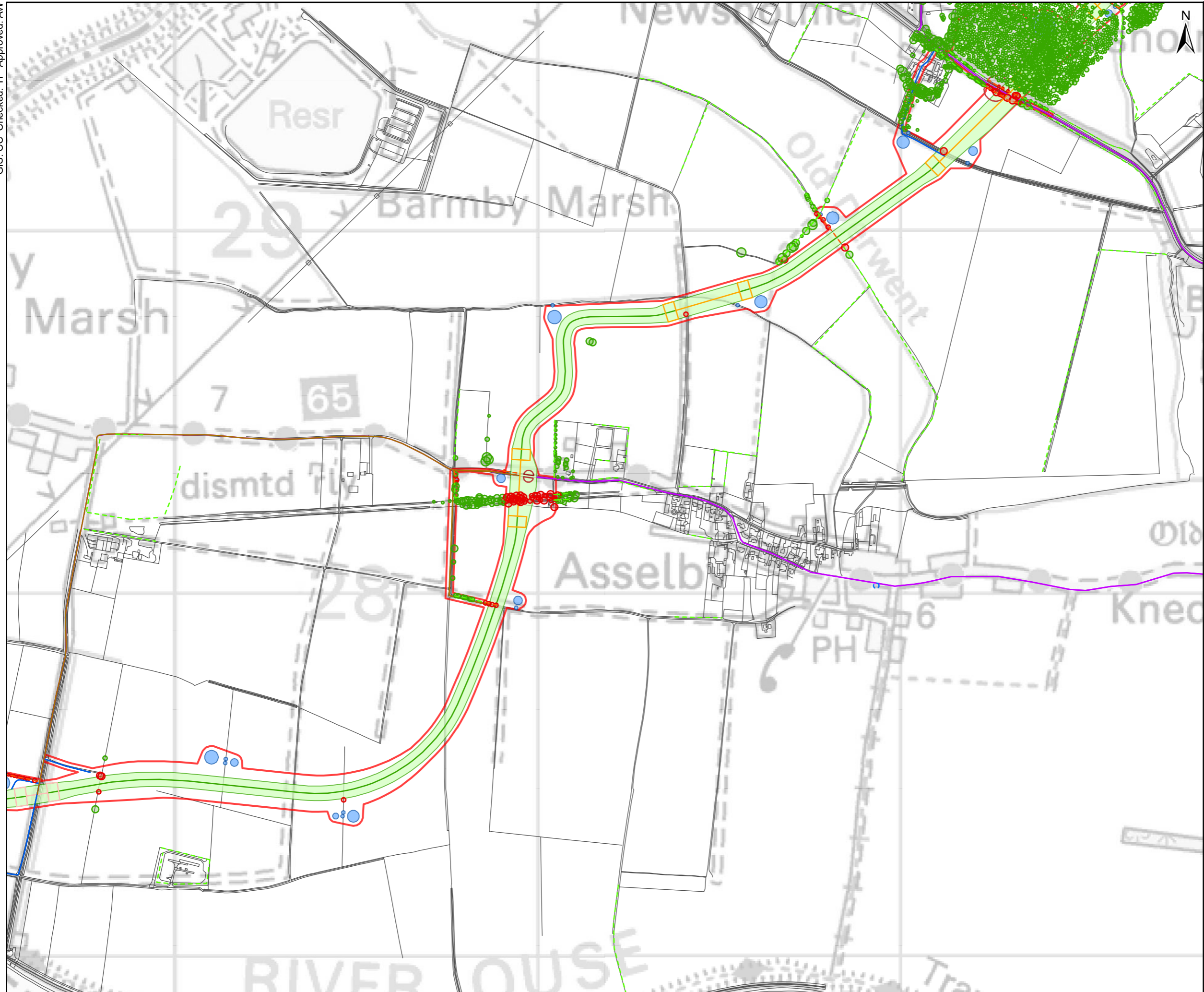


TITLE
High Level Tree Removals Plan

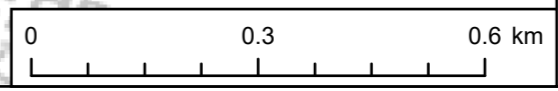
REFERENCE
SEGL2_T_ES_17-2_v1_20220509

SHEET NUMBER
2 of 25

DATE
23/05/2022



Contains Ordnance Survey Data © Crown copyright and database rights 2021 Ordnance Survey 0100031673.
 Contains public sector information licensed under the Open Government Licence v3.0.
 © Natural England copyright. Contains Ordnance Survey data © Crown copyright and database right 2021.
 Coordinate System: British National Grid



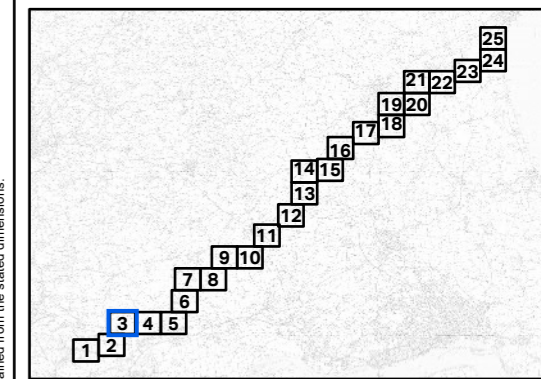
Scale @ A3 1:

This drawing has been prepared for the use of AECOM's client. It may not be used, modified, reproduced or relied upon by third parties, except as agreed by AECOM or as required by law. AECOM accepts no responsibility, and denies any liability whatsoever, to any party that uses or relies on this drawing without AECOM's express written consent. Do not scale this document. All measurements must be obtained from the stated dimensions.

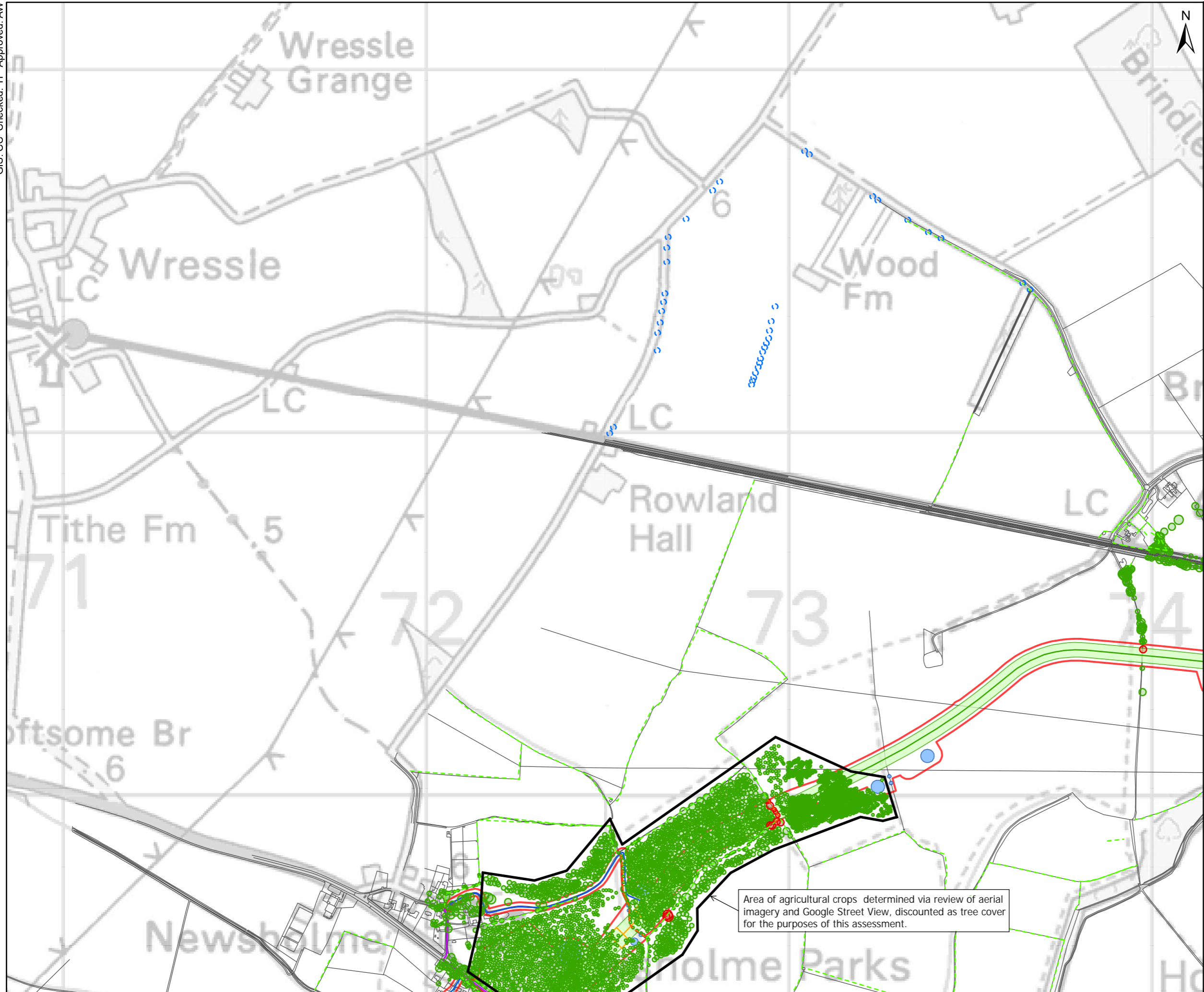
- KEY
- Tree Preservation Orders
 - Ecology Phase 1 Hedgerows
 - Retained
 - Removed

- National Tree Map - RPA Buffer
- Retained
 - Removed

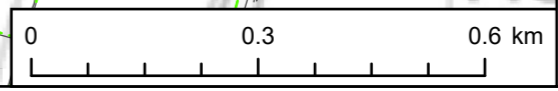
- Haul road route outside corridor
- Indicative Public Highway Access Route
- Mobilisation and Light Vehicle Access Route
- Off Highway Access Route for Mobilisation
- Converter Station Access
- Converter Station Earthworks
- HDD
- HDD - Potential to open cut watercourse
- HVAC
- HVDC
- 60m Wide LOD
- Attenuation Pond
- Bellmouth
- Combined Drainage
- Construction Compound
- Converter Station Extent
- Converter Station Purchase Area
- HVAC 50m swathe
- HVDC 40m swathe
- OS_MasterMap



GIS: CC Checked: TF Approved: AW



Area of agricultural crops determined via review of aerial imagery and Google Street View, discounted as tree cover for the purposes of this assessment.



Contains Ordnance Survey Data © Crown copyright and database rights 2021 Ordnance Survey 0100031673.
 Contains public sector information licensed under the Open Government Licence v3.0.
 © Natural England copyright. Contains Ordnance Survey data © Crown copyright and database right 2021.
 Coordinate System: British National Grid

This drawing has been prepared for the use of AECOM's client. It may not be used, modified, reproduced or relied upon by third parties, except as agreed by AECOM or as required by law. AECOM accepts no responsibility, and denies any liability whatsoever, to any party that uses or relies on this drawing without AECOM's express written consent. Do not scale this document. All measurements must be obtained from the stated dimensions.

Scale @ A3 1:

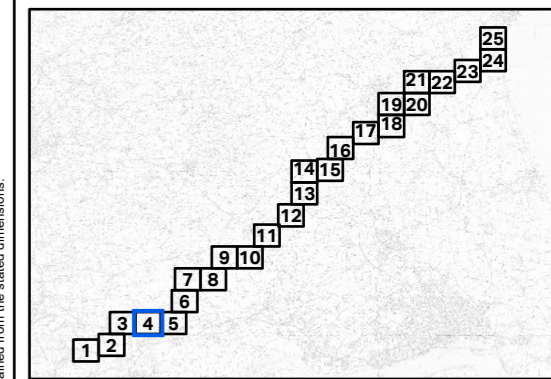
PROJECT
Scotland England Green Link 2

- KEY**
- - - Tree Preservation Orders
 - Ecology Phase 1 Hedgerows**
 - - - Retained
 - - - Removed

- National Tree Map - RPA Buffer**
- Retained
 - Removed

- Haul road route outside corridor
- Indicative Public Highway Access Route
- Mobilisation and Light Vehicle Access Route
- Off Highway Access Route for Mobilisation
- Converter Station Access
- Converter Station Earthworks
- HDD
- HDD - Potential to open cut watercourse
- HVAC
- HVDC
- 60m Wide LOD
- Attenuation Pond
- Bellmouth
- Combined Drainage
- Construction Compound
- Converter Station Extent
- Converter Station Purchase Area
- HVAC 50m swathe
- HVDC 40m swathe
- OS_MasterMap

Potentially veteran willow trees identified via Ecology Survey - The veteran potential and RPA of these trees will be assessed via detailed survey and any loss of confirmed veteran trees will be minimised as far as reasonably practicable through appropriate routing of the cable trench and minimisation of the working area to allow for exclusion zones to be established around retained trees.



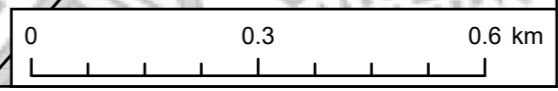
TITLE
High Level Tree Removals Plan

REFERENCE
SEGL2_T_ES_17-4_v1_20220509

SHEET NUMBER 4 of 25 **DATE** 23/05/2022

GIS: CC Checked: TF Approved: AW

Contains Ordnance Survey Data © Crown copyright and database rights 2021 Ordnance Survey 0100031673.
Contains public sector information licensed under the Open Government Licence v3.0.
© Natural England copyright. Contains Ordnance Survey data © Crown copyright and database right 2021.



Scale @ A3 1:

This drawing has been prepared for the use of AECOM's client. It may not be used, modified, reproduced or relied upon by third parties, except as agreed by AECOM or as required by law. AECOM accepts no responsibility, and denies any liability whatsoever, to any party that uses or relies on this drawing without AECOM's express written consent. Do not scale this document. All measurements must be obtained from the stated dimensions.

Coordinate System: British National Grid