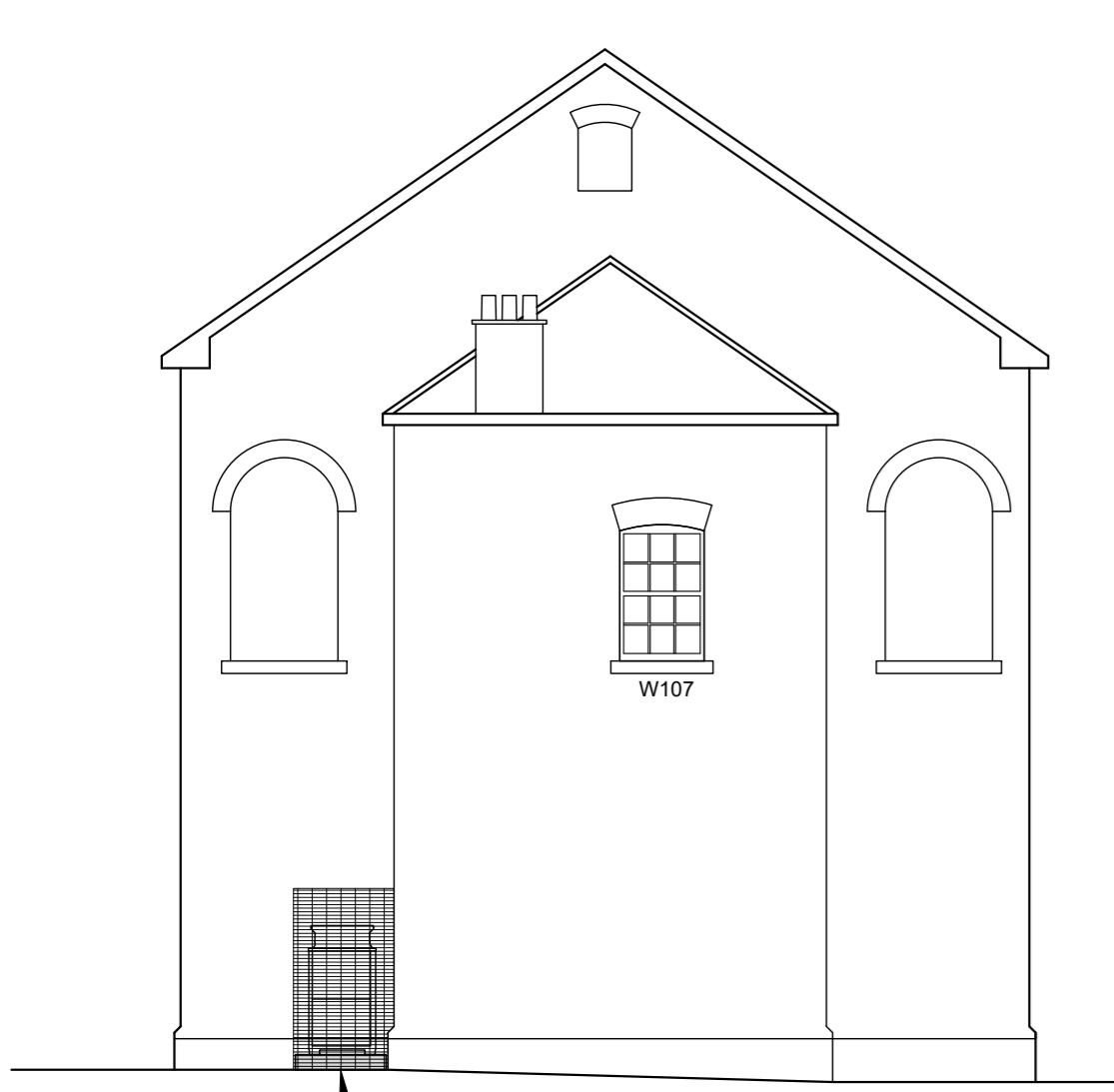


© D3-ASSOCIATES
 THIS DRAWING IS THE SUBJECT OF COPYRIGHT WHICH VESTS IN D3-ASSOCIATES. IT IS AN INFRINGEMENT OF COPYRIGHT TO REPRODUCE THIS DRAWING, BY WHATEVER MEANS, INCLUDING ELECTRONIC, WITHOUT THE EXPRESS WRITTEN CONSENT OF D3-ASSOCIATES WHICH RESERVES ALL ITS RIGHTS.

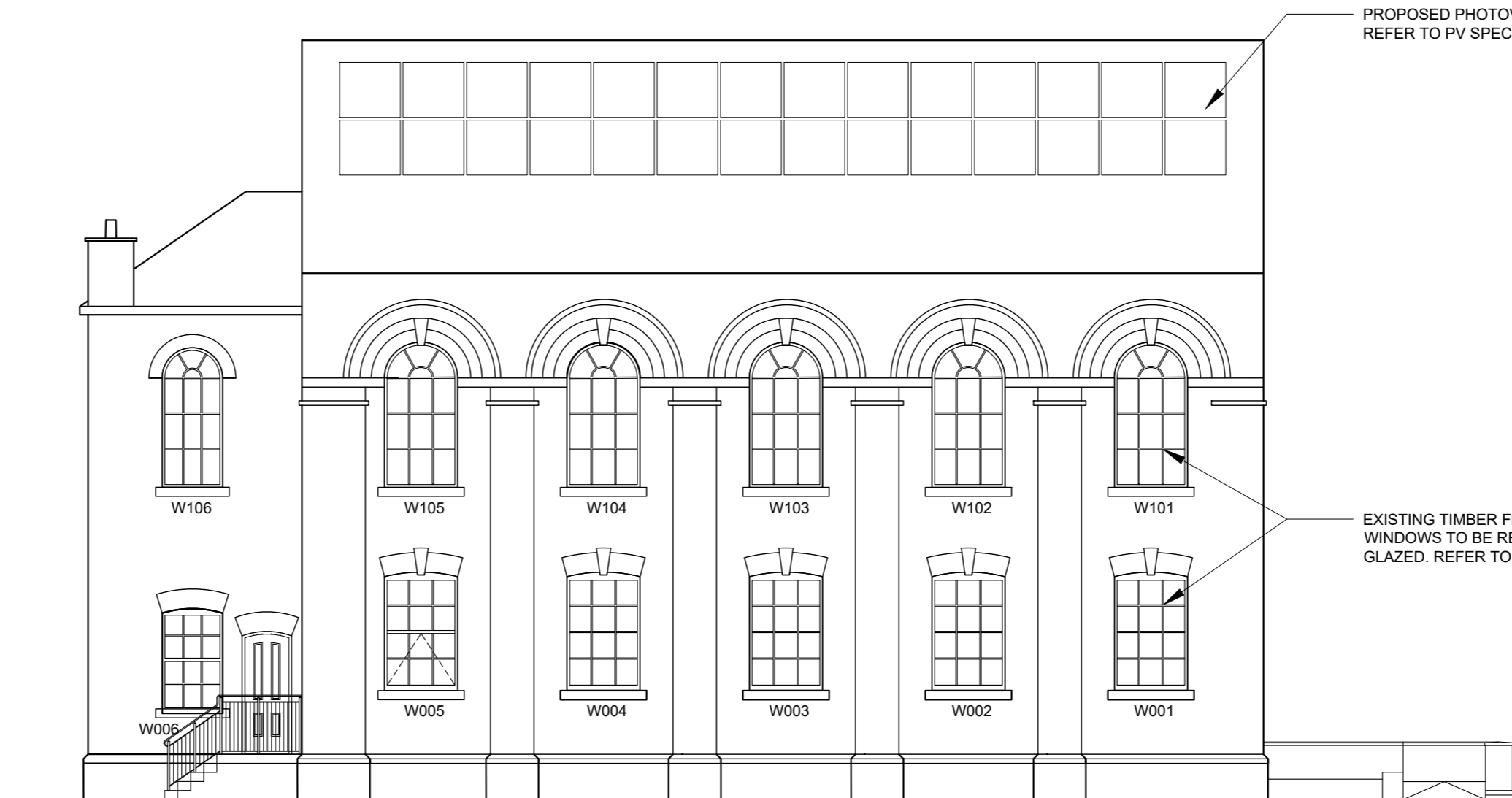
D3-ASSOCIATES ASSERTS ITS RIGHTS TO BE IDENTIFIED AS THE AUTHOR OF THIS DESIGN. ALL DRAWINGS, IMAGES AND MODELS ARE SUBJECT TO THE COPYRIGHT, DESIGNS & PATENTS ACT 1988.

- DRAWING NOT TO BE SCALED
- REPORT ERRORS & OMISSIONS TO D3-ASSOCIATES
- CHECK ALL DIMENSIONS ON SITE
- TO BE READ IN CONJUNCTION WITH HEALTH AND SAFETY PLAN AND ALL RELEVANT RISK ASSESSMENTS



SOUTH

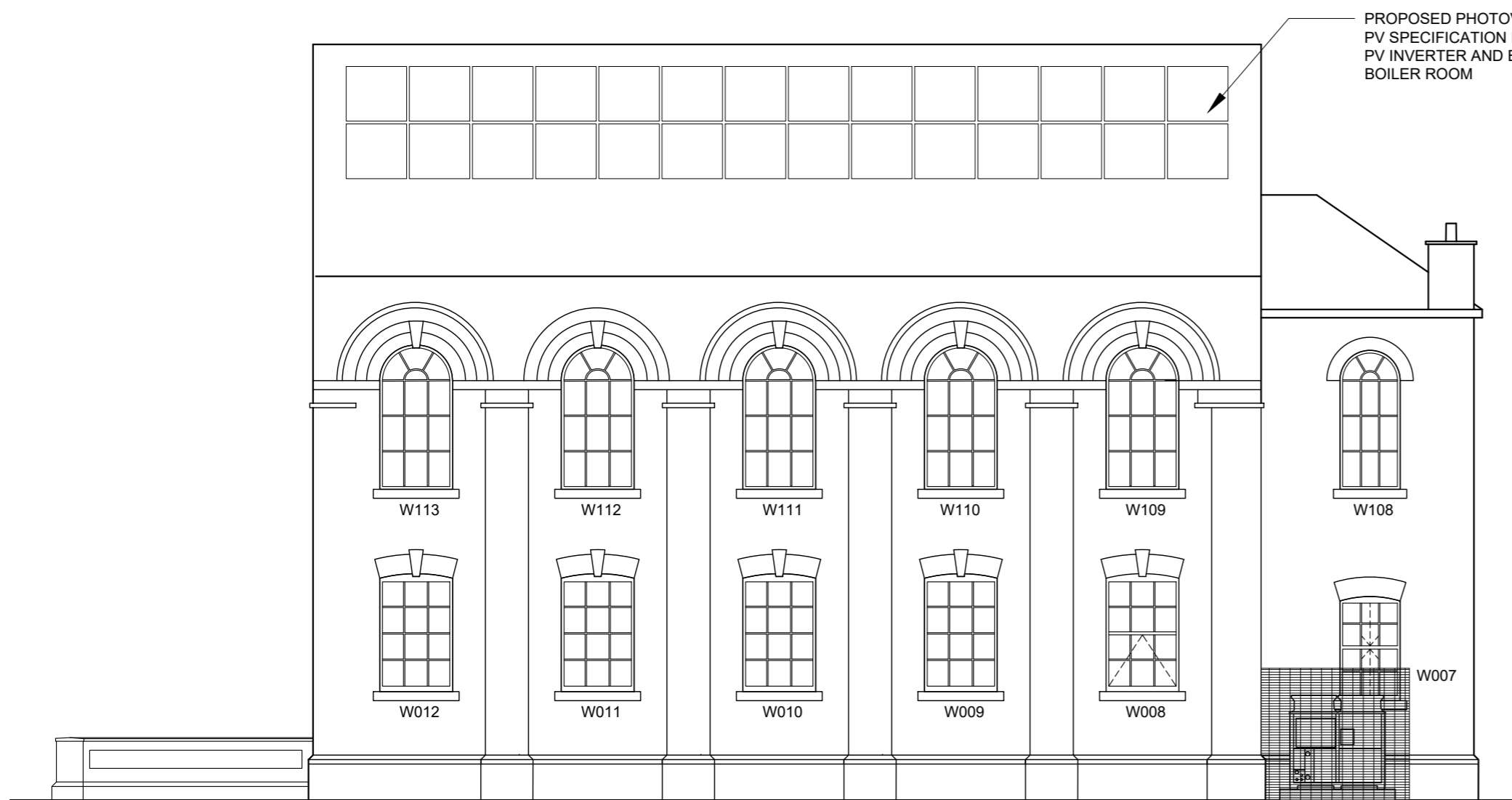
PROPOSED AIR SOURCE HEAT PUMP WITHIN ENCLOSURE - REFER TO M&E SPECIFICATION FOR DETAILS



EAST

PROPOSED PHOTOVOLTAIC ARRAY - REFER TO PV SPECIFICATION FOR DETAILS

EXISTING TIMBER FRAMED SINGLE GLAZED WINDOWS TO BE REPLACED WITH NEW DOUBLE GLAZED. REFER TO WINDOW SCHEDULE 6200



WEST

PROPOSED PHOTOVOLTAIC ARRAY - REFER TO PV SPECIFICATION FOR DETAILS
 PV INVERTER AND BATTERY TO BE INSTALLED IN BOILER ROOM

PROPOSED AIR SOURCE HEAT PUMP WITHIN ENCLOSURE - REFER TO M&E SPECIFICATION FOR DETAILS



NORTH

P02	DRAWING NUMBER UPDATED, ISSUED FOR PLANNING	SB	GR	21/02/24
P01	FIRST ISSUE FOR INFORMATION	SB	GR	22/12/23
REV	DESCRIPTION	ISSUED	CHECKED	DATE

PURPOSE OF ISSUE

PLANNING

PROJECT INFORMATION

NE & Y NET ZERO HUB
 MARKET WEIGHTON

DRAWING INFORMATION

PROPOSED ELEVATIONS

DRAWING NO.

1838-MWE-D3A-00-XX-DR-A-

3600

PROJECT NO.	DRAWN	SCALE @ A2	STATUS	REVISION
1838	SB	1 : 100	S2	P02

