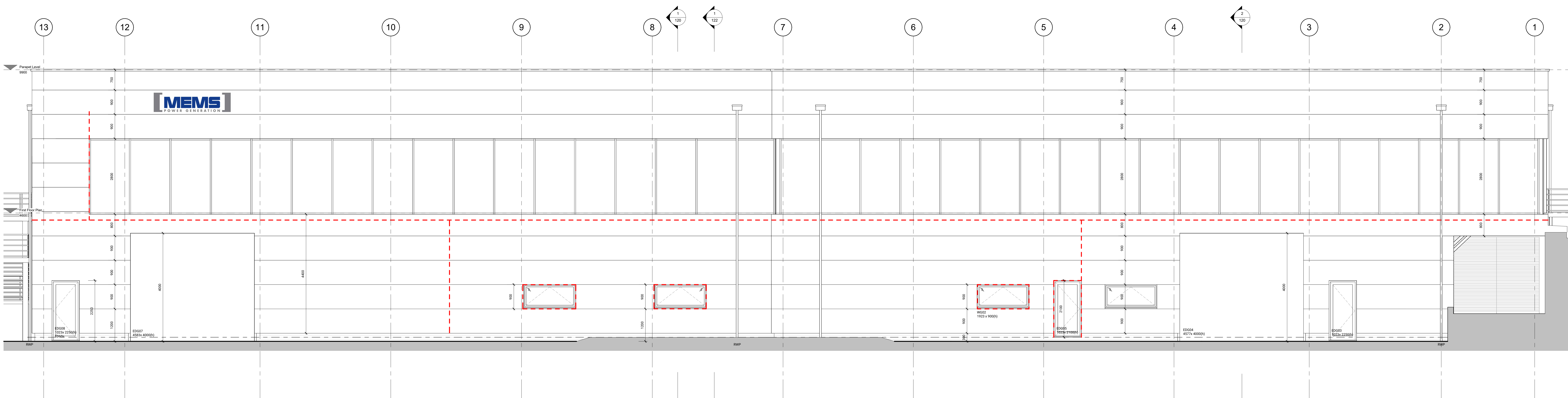


Front Elevation
1: 50



Rear Elevation
1: 50

O	04.03.24	MEMS signage added
N	04.03.24	Additional window added
M	28.11.23	Amended to comments from RWC
L	29.09.23	Updated as per issues
K	19.09.23	Fire barrier positions indicated
J	25.08.23	Staff lobby added
I	04.08.23	First floor curtain walling amended. Cladding redesigned to suit.
H	18.07.23	Amended in line with revised wall construction
G	17.07.23	Revised Contract Issue
F	29.06.23	Construction Issue
E	29.06.23	Contract Issue
D	09.05.23	Tender Issue
C	08.03.23	General Updates
B	24.02.23	General Updates
A	08.02.23	Preliminary Issue

--- Dashed lines designate location of fire barriers.

Notes:
Drawing may be used for planning and land registry only, not for construction purposes.
The contractor is responsible for checking dimensions, tolerances and references. Report all discrepancies to GSG Architecture Limited before proceeding with the works.
Where an item is covered by drawings to different scales, the larger scale drawing is to be worked to.
COPYRIGHT: GSG Architecture Limited own the copyright to this drawing. These written contents must be obtained before this drawing is copied or used for any purpose other than the one in which it was supplied.

Project Title	New Workshop and Office Space
at	MEMS Beechings Way Gillingham ME8 6PS
Scale	1: 50
Date	Jan '23
Drawn By	DH
Checked By	DH
Approved By	JC
Status	PRELIMINARY
Revision	0

Architect: GSG ARCHITECTURE
10123 811 148
MEMS BGC
4 Jubilee Way, Faversham, Kent