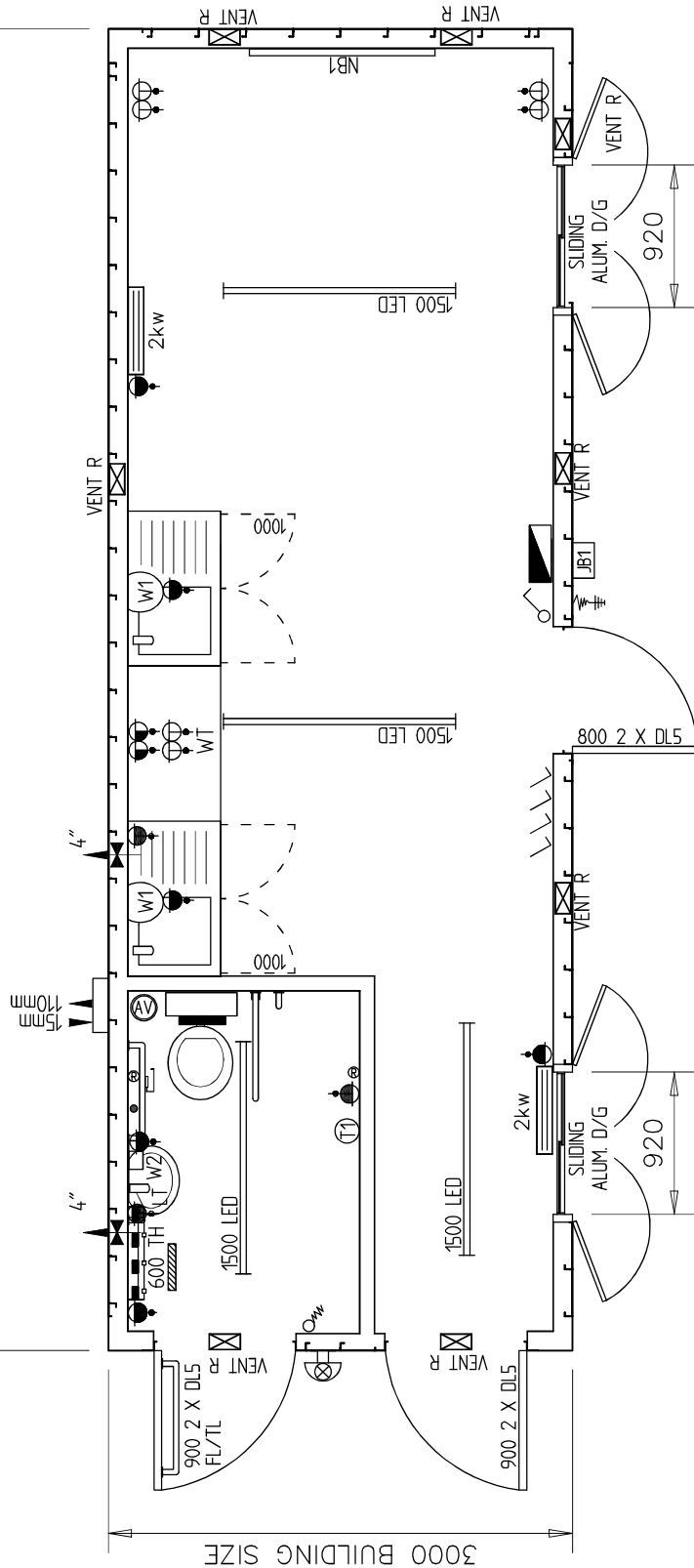




8540 BUILDING SIZE



3000 BUILDING SIZE

NOTES

1. THIS UNIT IS BASED ON OUR STANDARD PRODUCT SPECIFICATION AVAILABLE FROM [WWW.ALSIM.CO.UK](http://WWW.ALSIM.CO.UK)/SPECIFICATION
2. DRAWING SHOULD BE READ IN CONJUNCTION WITH CURRENT VERSION OF THE DRAWING LEGEND.
3. ALL WALLS AND CEILING TO LINED IN VINYL FACED PLASTERBOARD, WALLS - CREAM, CEILING - WHITE
4. PLEASE NOTE THAT THE UNIT DOES NOT COMPLY WITH THE BUILDING REGULATIONS BUT DOES INCLUDE DISABLED TOILET FACILITIES.
5. JACKLEG BRACKETS ARE OMITTED DUE TO UNIT DESIGN

USE DIMENSIONS - DO NOT SCALE		
Dimension Units ALL IN MILLIMETRES		
COLOUR ONE COLOUR - TBA		
FOUNDATION -		
UNLADEN WEIGHT (KG) 4775		
MAXIMUM LADEN WEIGHT (KG) 9600		
MAXIMUM LIFT WEIGHT (KG) 8000		
Title 28' X 10' FLAT STEEL DISABLED TOILET / CANTEEN UNIT		
Product Code -		
Date 08/01/24	Scale 1 : 50	Drawn By RMC
Drawing / Unit No. 017701-2		Rev. A

REV.	DATE	BY	DESCRIPTION
A	30/01/24	RJT	PLUMBING UPDATED