

Summary note in support of non-material amendment to approved planning application 22/07046/FU, outlining changes to the approved design

1. Re-positioning and re-sizing of windows and french doors to the East elevation (front of the property), and a re-positioning of the front door.



Proposed East Elevation

1 : 100

Approved design



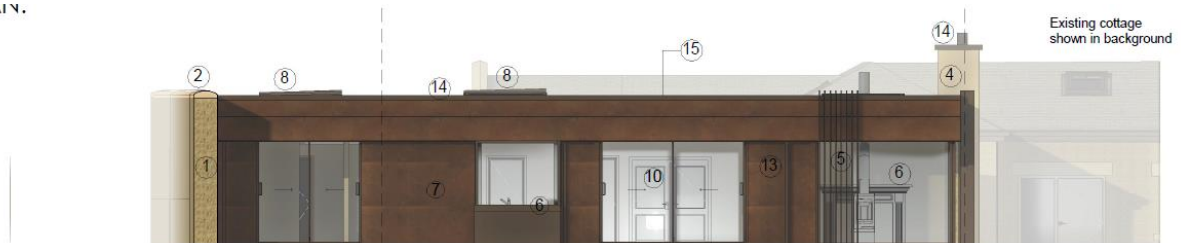
Proposed East Elevation

1 : 100

Updated design

2. Re-positioning and re-sizing of windows and french doors to the West elevation (rear, garden-facing side of the property), and some changes to materials.

NEL FLAIN.
1 : 500



Proposed West Elevation

1 : 100

Approved design

1 : 500



Proposed West Elevation

1 : 100

Updated design

3. Update to the window layout of the South elevation (side of the property), and changes to materials for garage doors.



Proposed South Elevation
1 : 100

Material Key

Approved design

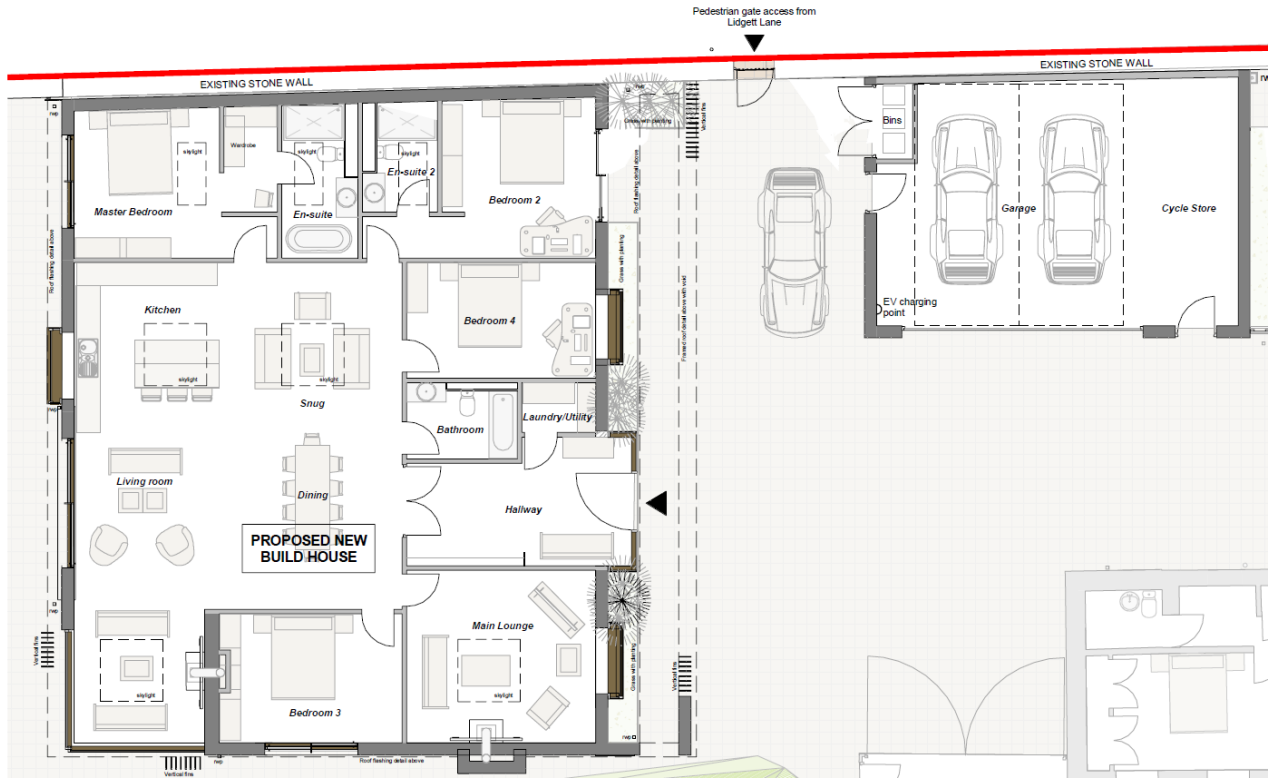


Proposed South Elevation
1 : 100

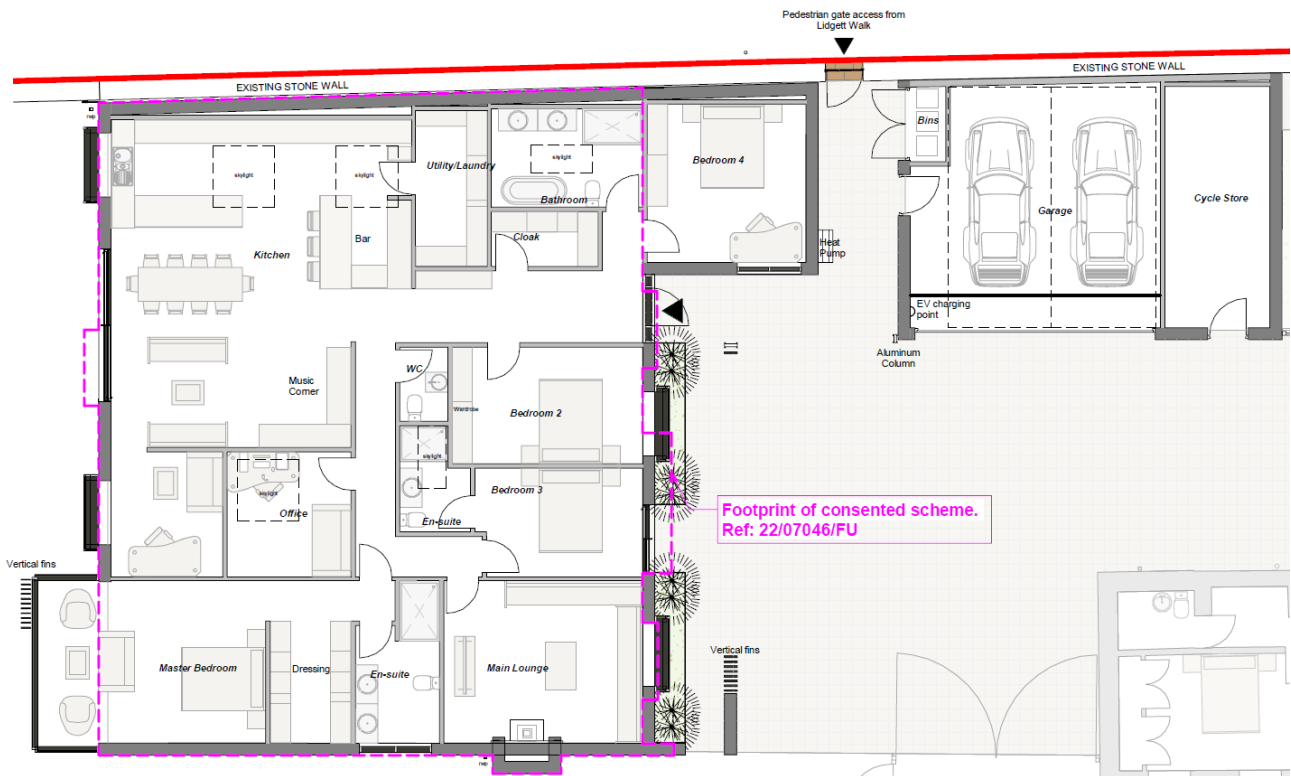
Material Key

Updated design

- Minor re-design of building footprint as shown dotted in magenta below. Interior layout reconfiguration with re-positioned exterior windows / doors to support this. Re-location of pedestrian gate slightly to the east.

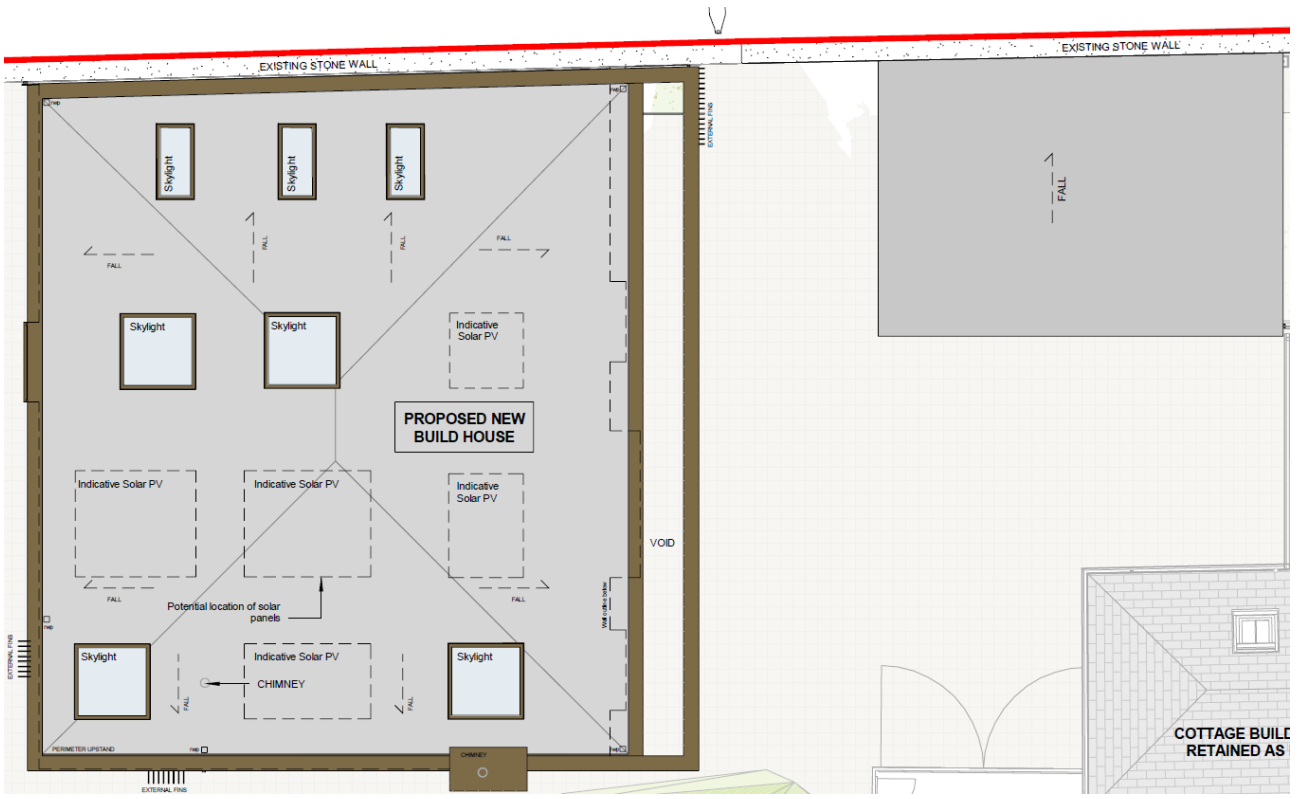


Approved design

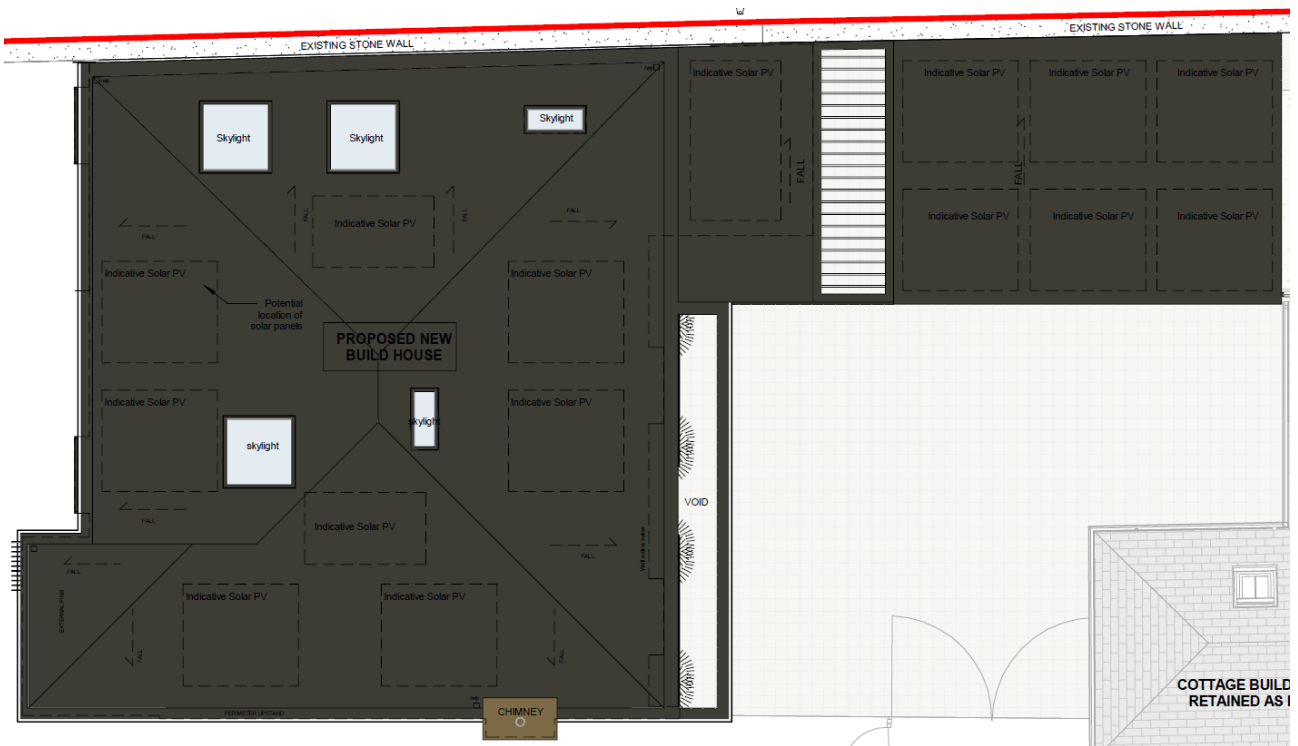


Updated design

- 5. Updated roof plan, connecting the house to the garage for enhanced amenity / aesthetic and to allow for an extended solar panel plan. Updated skylight layout in support of the updated interior layout.



Approved design



Updated design