

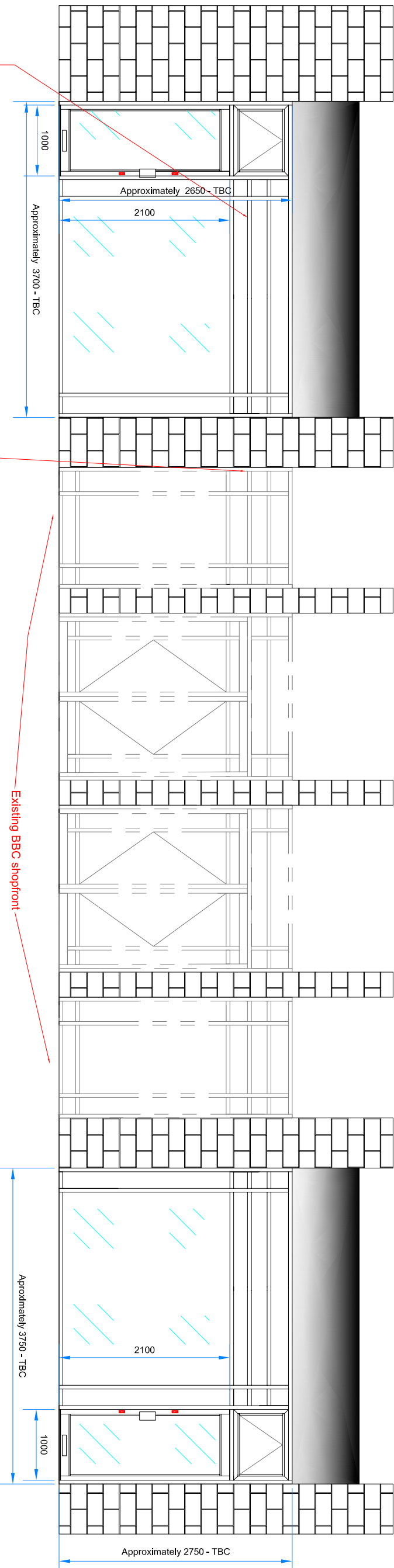
# Axis - BBC, Lincoln

## Replacement Aluminium shopfronts

CONFIDENTIALITY & COPYRIGHT RESERVED  
 THE CONFIDENTIAL INFORMATION SHOWN ON THIS DRAWING BELONGS TO AXIS ENTRANCE SYSTEMS LTD AND CANNOT BE USED IN WHOLE OR PART BY ANY OTHER PARTY WITHOUT THE PRIOR WRITTEN CONSENT OF AXIS ENTRANCE SYSTEMS LTD  
 DESIGN CONCEPTS SHOWN ARE STRICTLY RESERVED AND CANNOT BE COPIED IN WHOLE OR IN PART OR A THIRD PARTY WITHOUT PRIOR WRITTEN CONSENT OF AXIS ENTRANCE SYSTEMS LTD  
 © Axis Entrance Systems Ltd

### Notes: - Typical Specification

1. MATERIAL - NON THERMALLY BROKEN ALUMINIUM SHOP FRONT SECTION.
2. LOCKING - 2No. HOOK LOCK WITH 17MM EURO PROFILE CYLINDERS
3. GLAZING - DGU
4. COLOUR - RAL TBC (To match the BBC)
5. Top Hung Window Above Each Doorway.
6. Letter plate to each door leaf.



New shopfront horizontals to match existing BBC shopfront. Nearest mid-rail size to be used as matching current system will be difficult.

Existing BBC shopfront

Revision	Description	Date

**Design only**

Client: -  
Mite FM

Project: -  
BBC RADIO LINCOLN

Title: -  
New Entrances To Adjacent Units

Address: -  
Newport, Lincoln LN1 3XY

Date: -  
21/02/24

Project No: -  
4900344

Drawing No.:	Revision:	Drawn:	Checked:
0001	A	JH	

PLEASE NOTE THAT NO ALTERATIONS MAY BE MADE TO THE METHOD OF MANUFACTURE. MATERIALS SPECIFIED OR DIMENSIONS SHOWN ON THIS DRAWING WITHOUT PRIOR CONSULTATION WITH THE CAD DEPT. SHOULD ANY COSTS BE INCURRED AS A RESULT OF ANY ALTERATIONS THE MANUFACTURER MAY BE LIABLE.

**axis**  
 ENTRANCE SYSTEMS  
**doorson**  
 OPENING YOUR IMAGINATION

Unit 6 Queens Park Industrial Estate  
 Stoddard Road, Northampton, NN2 6NA  
 Tel - 01604 212 900  
[WWW.AXISENTRANCES.COM](http://WWW.AXISENTRANCES.COM)

**Do Not Scale**