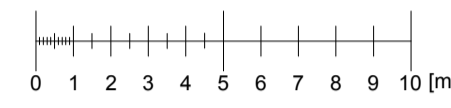


**BEECH HILL**



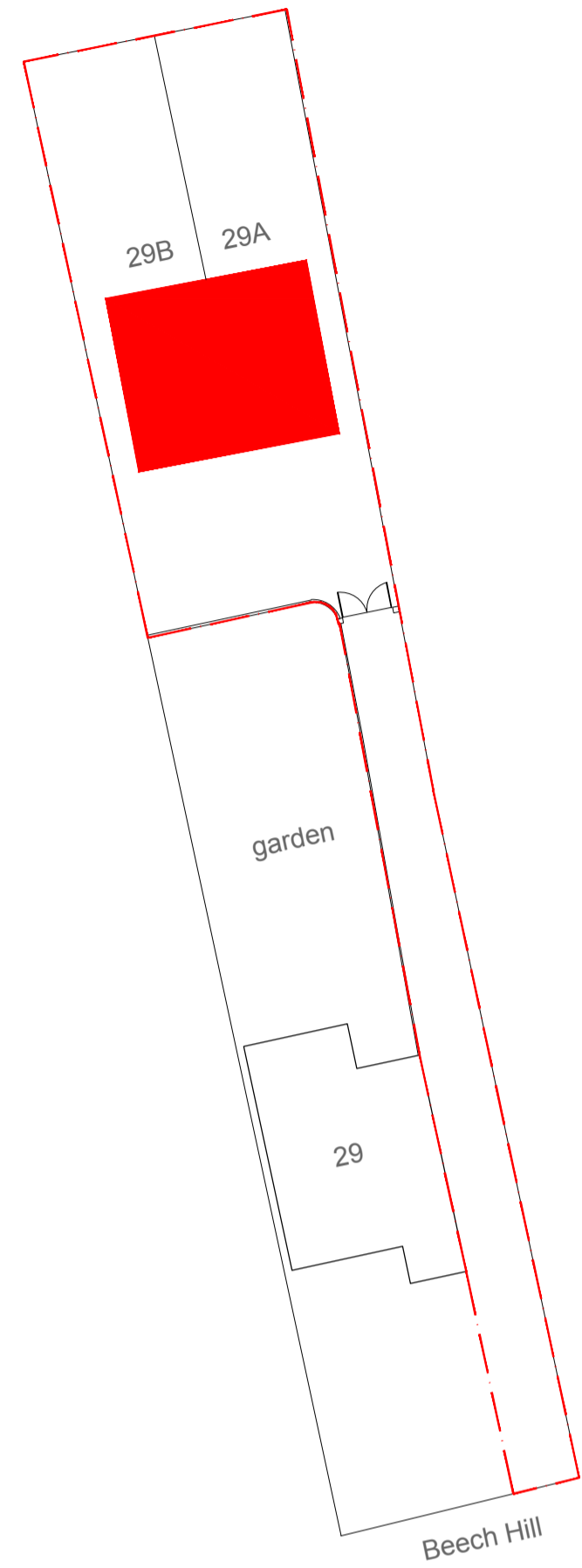
**SECTION**  
SCALE 1:200



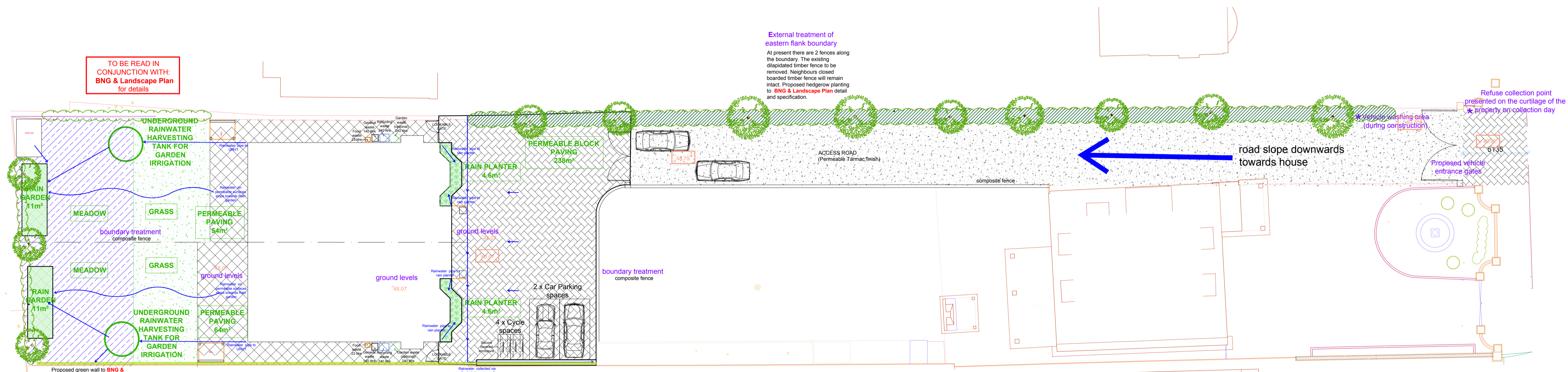
**SUDs/ PERMEABLE SURFACE TREATMENT**

- RAIN GARDEN (total 22m<sup>2</sup>)
- GRASS & MEADOW (total 254m<sup>2</sup>)
- RAIN PLANTER (total 13.5m<sup>2</sup>)
- PIPE RUNS/ DIRECTION OF FLOW (Suds)
- PERMEABLE PAVING (total 118m<sup>2</sup>)
- PERMEABLE BLOCK PAVING (total 238m<sup>2</sup>)
- PERMEABLE TARMAC (total 393m<sup>2</sup>)
- RAINWATER HARVESTING TANK (2No. x 10,000L)

+49.62 LEVELS

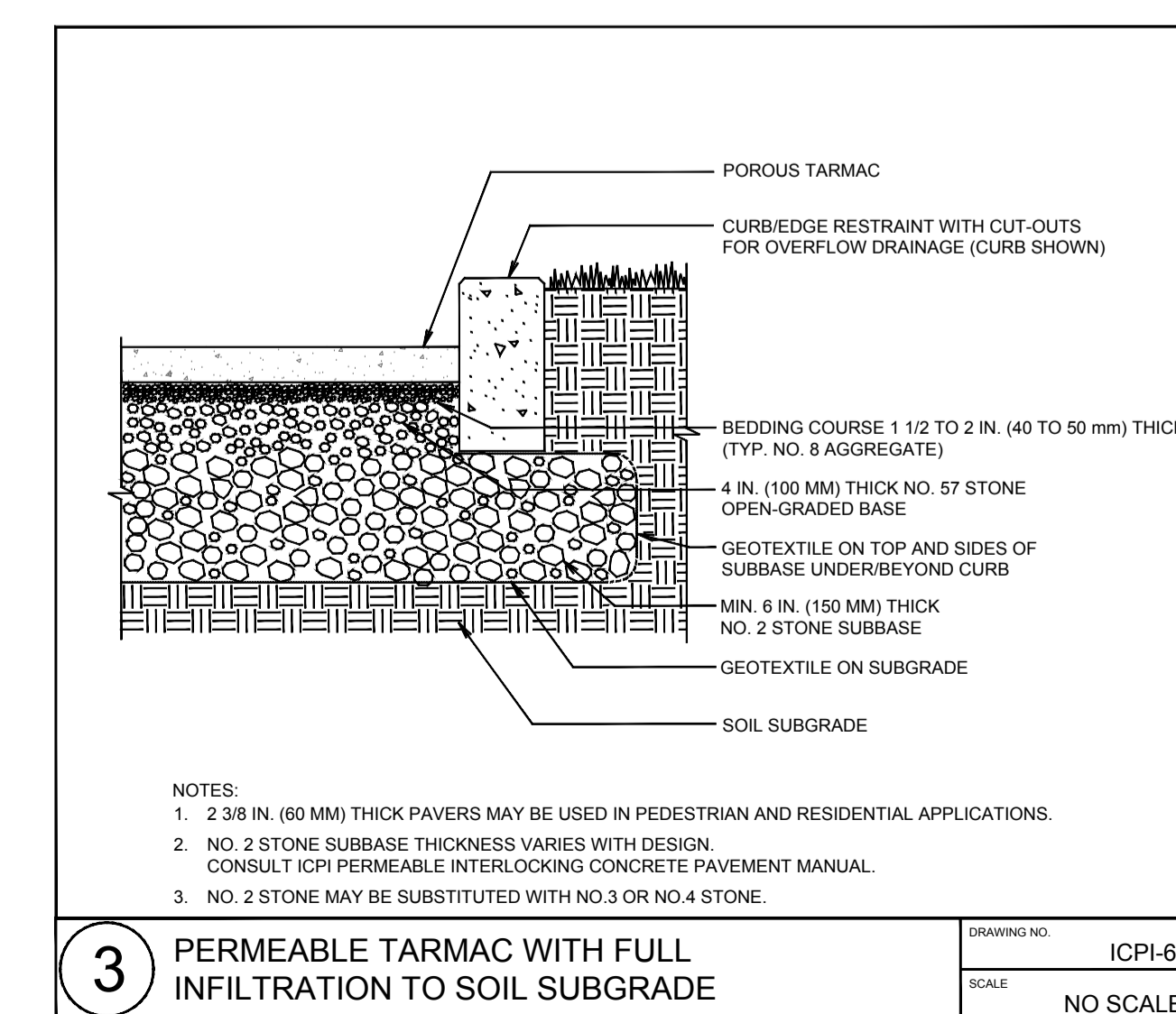
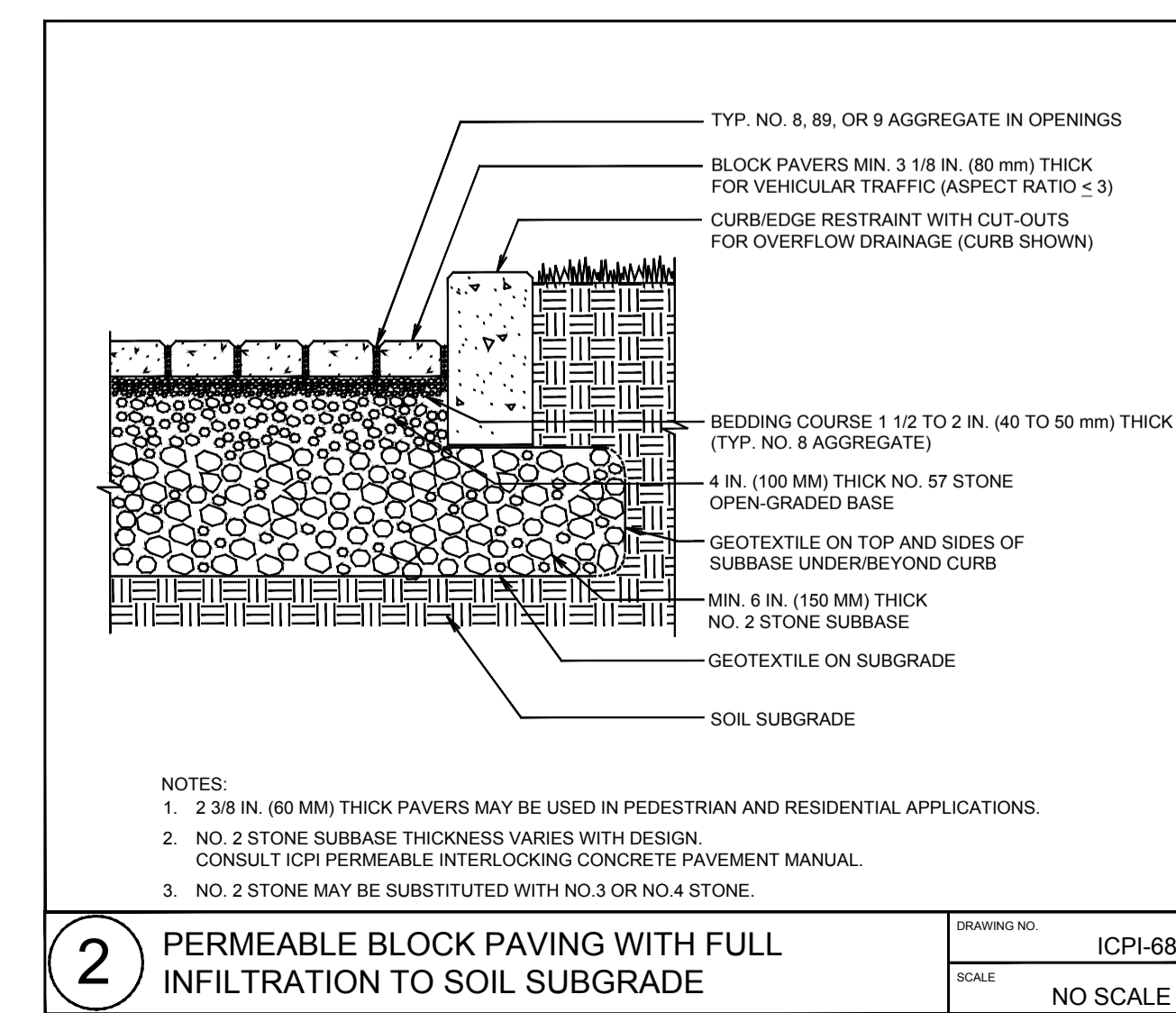
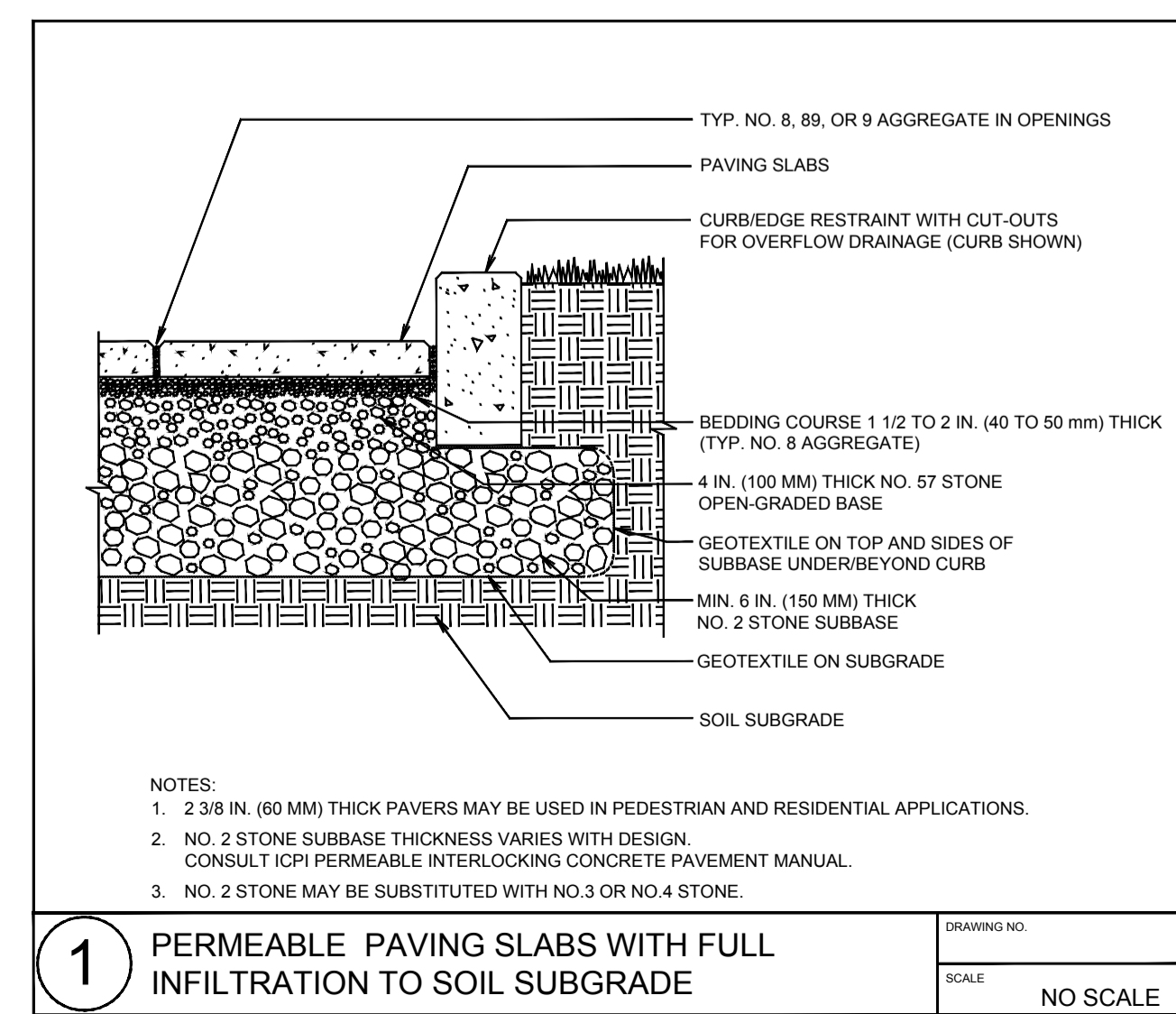
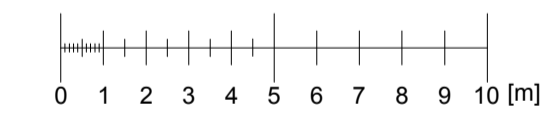


TO BE READ IN CONJUNCTION WITH:  
**BNG & Landscape Plan**  
 for details



**PROPOSED SITE LAYOUT PLAN**

SCALE 1:200



<b>R/O 29 BEECH HILL</b>	
Hadley Wood, EN4 4JN	
CLIENT Mr T. Tsoukka & Ms P. Tsoukka	
<b>CONDITION 8</b>	
SCALE 1:200 (A1)	DATE Jan 2024
DWG NO C.08	REVISION -

