

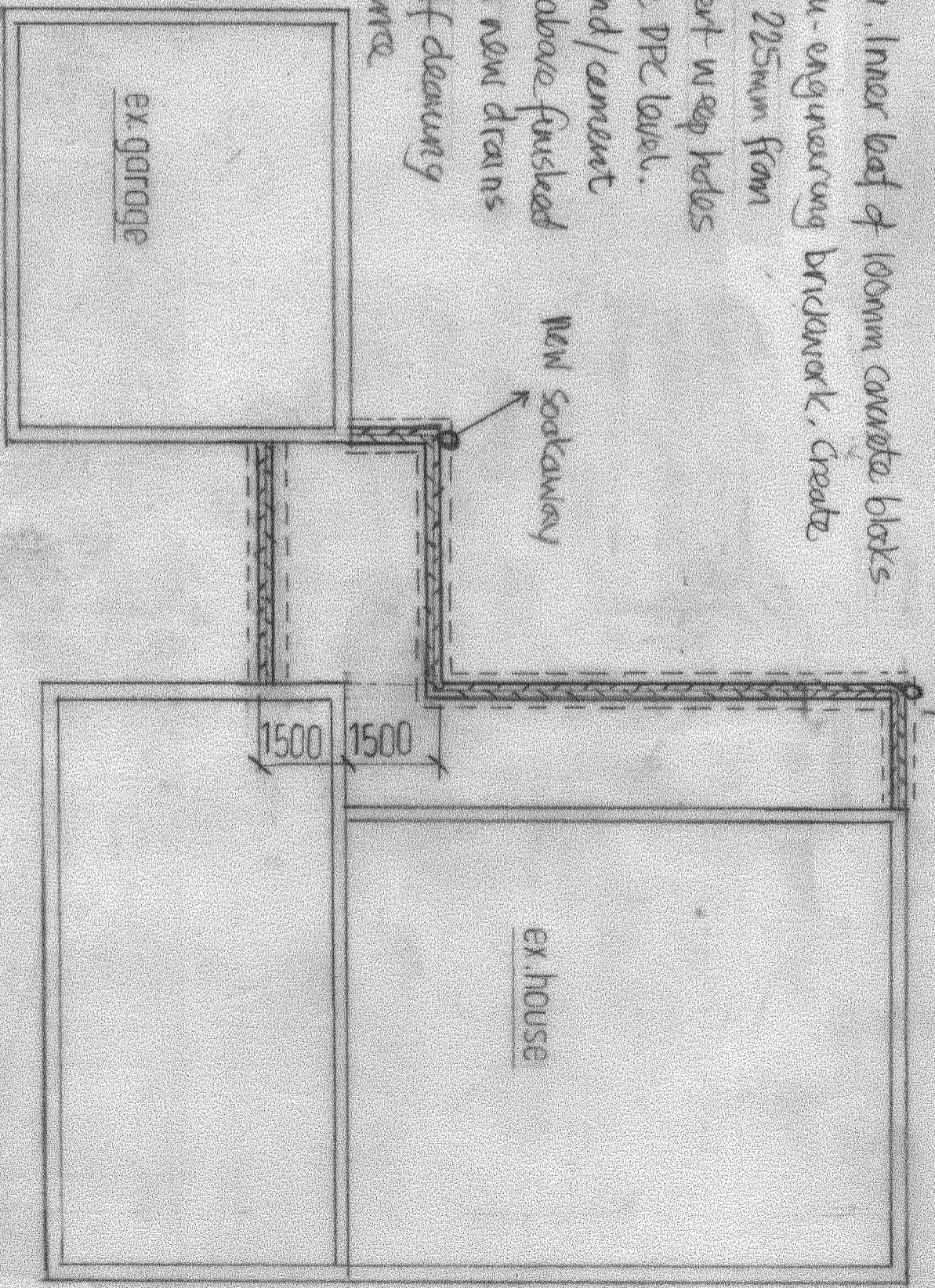
Foundations designed assuming ground is capable of 100kN/dm² stated depths - Footings close to any trees, increase depths of footing to NFBc guidelines. Unreinforced bases to have min 50mm concrete bunding to prevent weathering.

Foundation Details - Use mass concrete designated GEN3 mix and to comply with BS 5328 and supplied by a QS. Em's approved plant. External footings - 600mm wide x 1000mm deep. Any roots found in excavations depths to be increased by min 330mm below lowest found root. All formation levels to be agreed on site with L.A. Building Control. Any new or existing drains passing through footings to be sleeved or concrete lintels over and to L.A. approval.

New soakaways - Min 5m from extension, Percolation tests to the acceptance of L.A. Building Control.

Assume content 1.5m² below invert level and adjust to L.A. approval.

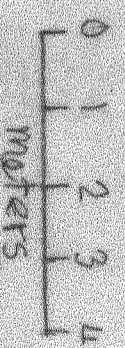
All walls below DPC to be 300mm wide cavity construction. Inner leaf of 100mm concrete blocks (7kn) or semi-engineering brickwork. External wall to be semi-engineering brickwork, create 100mm wide cavity filled with a lean mix concrete up to 225mm from DPC level. Top splay outer leaf with perpendicular joints. Insert weep holes every 900mm ctrs. First course wall ties positioned above DPC level. Use 100mm wide flexible pitch polyurethane bedded on sand/cement mortar to inner/outer walls. DPC positioned 150mm above finished ground level. Joints to DPC lapped min 150mm. All new drains and adjustments use 110D UPVC pipework layed on a self cleaning gradient on a selected bed backfill and all to acceptance of L.A. Building Control.



PROPOSED-Porch/Kitchen Extension/Garage Conversion to Annex to 'Stone House Farm', Broome, Stourbridge, DY9 0EG

FOUNDATION DETAILS

Scale 1:100



Drwg No - FD 01

Issue - 1