

**DRAINAGE:** - AS DRG N° 2 CONTRACTORS TO LEAVE EXC ASSUMED FW/SW COMBINED BRANCH DRAINS ON SITE AND ARRANGE TO EXTEND TO SUIT PROPOSED WORKS IN MIN 100 Ø GRP/PASTIC BRANCH DRAINAGE AND ONTO 150MM CLEANSTONE, PEA-GRAVEL, PIPE BEDDING TO MIN 1:40 FALLS AND GRADIENTS FROM NEW SEALED BACK INLET GULLIES TO RUP/DOWNSPOUTS AND SOIL/STUB STACKS 100 Ø OUTLETS & CONNECTED UP TO EXC. COMBINED - VENTED FW/SW DRAINAGE.

- AT EACH CHANGE IN DIRECTION AND/OR INTERSECTION OF BRANCH DRAINS PROVIDE (IC) INSPECTION CHAMBERS/RODDING EYES (RE) IN ORDER TO ACCESS DRAINAGE TO ROD, TEST, CCTV-CAMERA SURVEY / MAINTENANCE ETC.
- ENSURE ALL NEW DRAINAGE IS INSPECTED, TESTED AND APPROVED BY LABCO PRIOR TO BACKFILLING / REINSTATING UP TO GROUND BEIN STATEMENT LEVELS AND.....
- ADEQUATE VENTILATION IS PROVIDED TO FW BRANCH DRAINAGE VIA SOIL / STUB STACKS AS POTH TO BS 5572 : 1978 ETC.

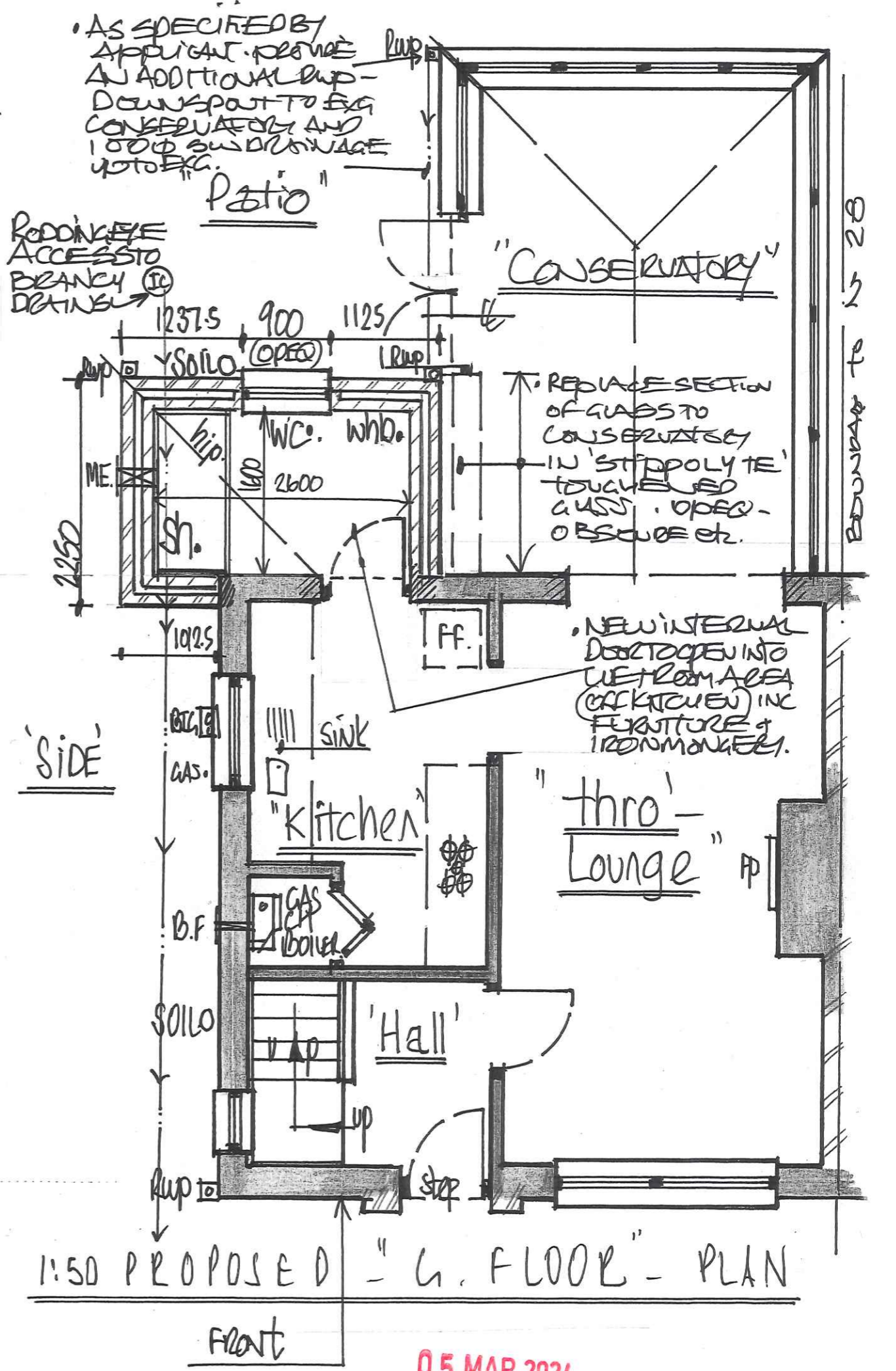
**WET ROOM INSTALLATION:** - AS PER AGREED ON SITE BETWEEN THE APPLICANTS / CONTRACTORS INC 'MAKE/MODEL TYPE OF SHOWER, WC, WHB AND THEIR EXACT POSITIONING, SETTING OUT / ARRANGING TO SUIT AVAILABLE AREAS, POSITIONS SHOWN ARE ONLY 'PROVISIONAL AND SUGGESTIVE' AND AS ADVISED, AGREED ETC.

- EXTEND MAINS COLD WATER SUPPLIES AND HOT WATER / CENTRAL HEATING TO SUIT AND DISCHARGE OF FW FROM SANITARY ITEMS.

**INT'-FLOOR AREAS:**

Area	M <sup>2</sup>
G. FLOOR WET ROOM	4.16
1.6 x 2.6	

∴ B. CONTROL FEES < 10M<sup>2</sup> AS FP 1.



100 PROPOSED - "BLOCK PLAN"

DRG N°: **4A.**

05 MAR 2024

12201124