

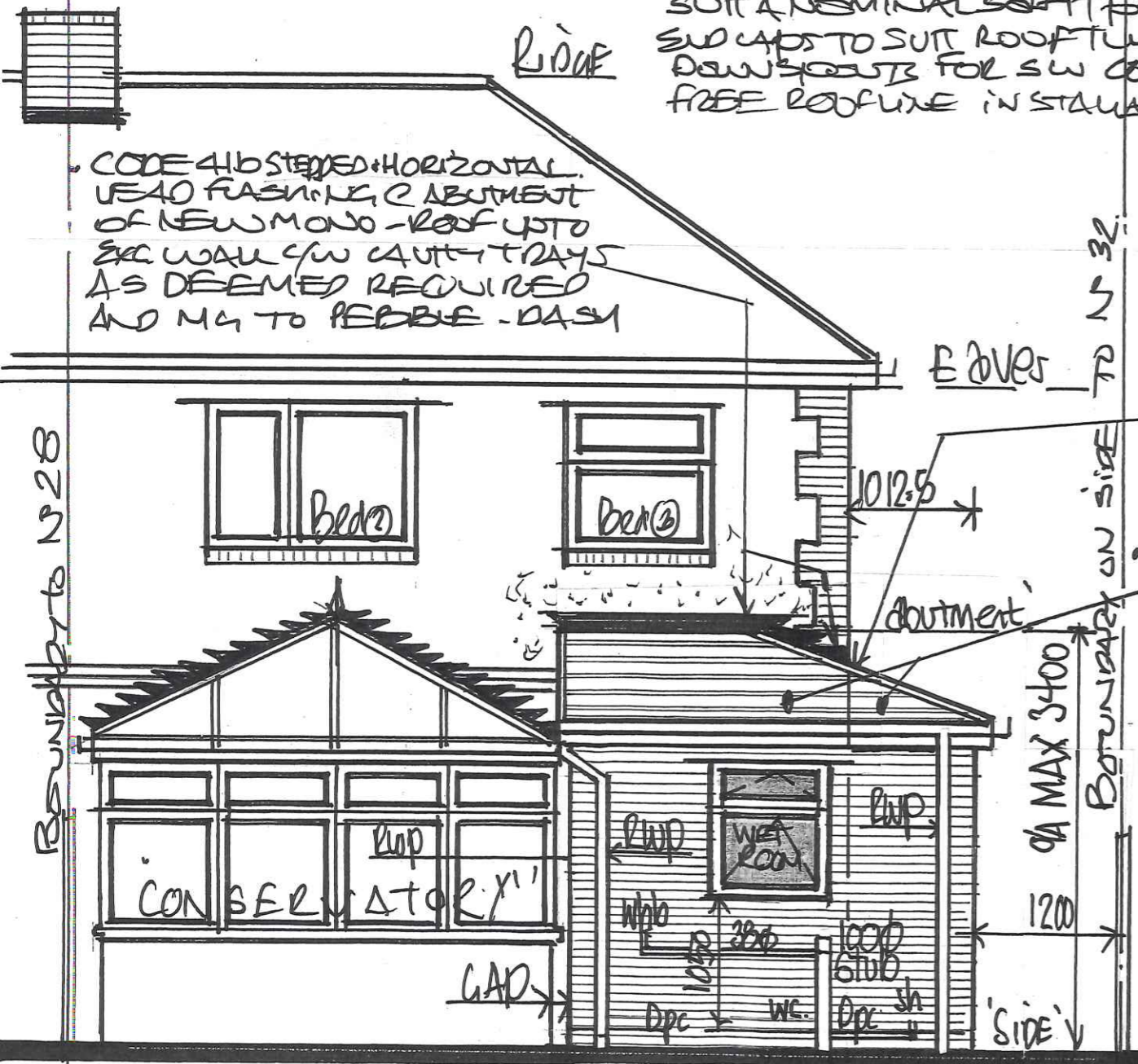
NEW WINDOW CASEMENT

70mm UPVC - VEKA OR RETAU PROFILED WINDOW CASEMENT IN PAL-LIGHT-OAK TO MATCH EXISTING FITTED IN DOUBLE GLAZED SEALED UNITS 28mm IN 2x4mm PAPER TO ACHIEVE A MAX 'U' VALUE OF 1.4 AS DOC L JUNE 22 WITH A TOP OPERER FOR RADIO-NATURAL-PURGE VENTILATION & FRESH AIR AND A TRICKLE VENT FOR ADDITIONAL SECURE BACKGROUND VENTILATION EQUAL TO MIN 8000mm² AS DOC F TABLE 1.7
GLAZING TO BE OPER/OBSURE & FROSTED FOR PRIVACY AND A FLOOR TO SILL HEIGHT OF 1050mm AFFL FOR A 150mm W COURSE TILED SPUR BACK etc

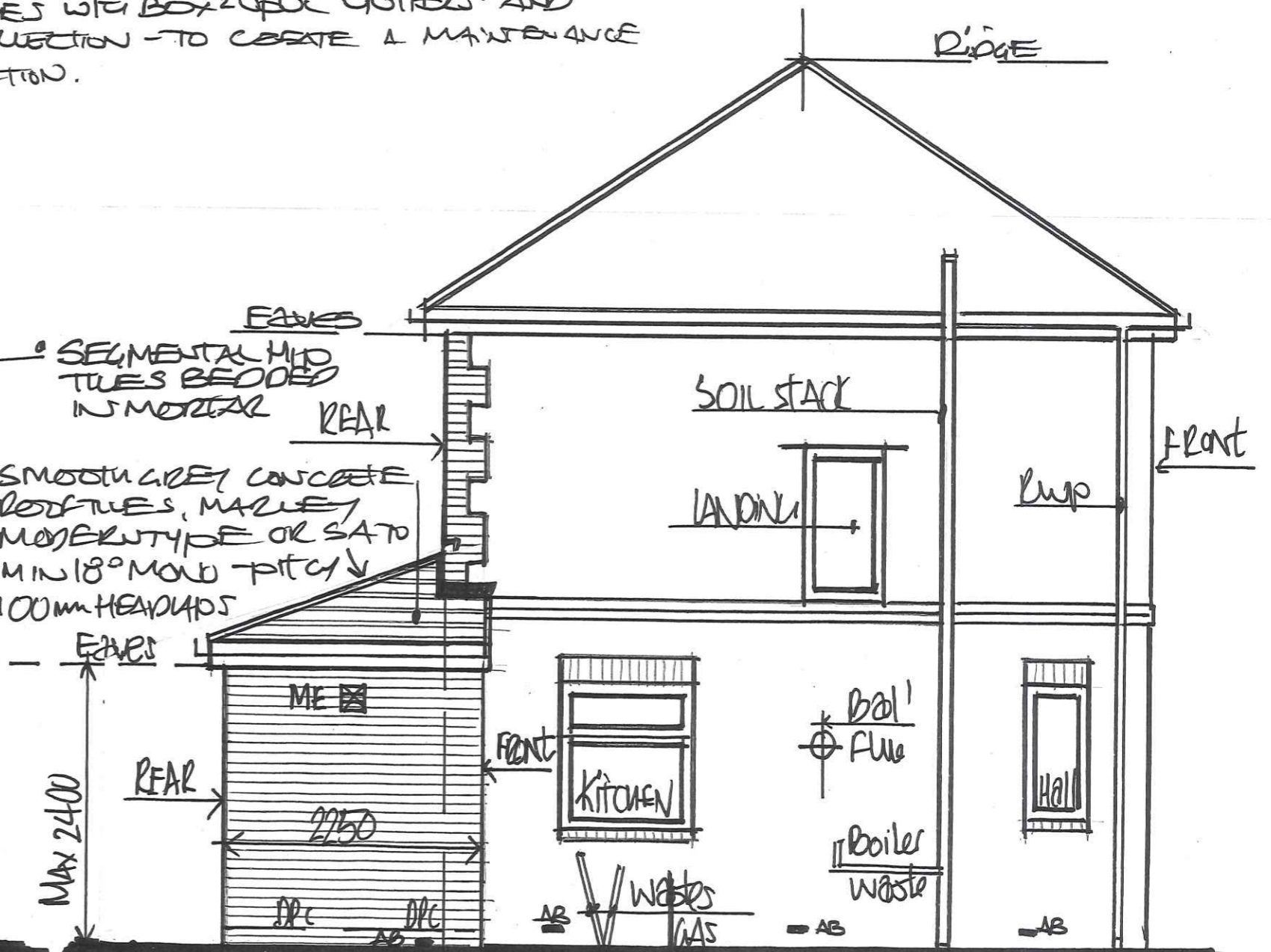
• EXTRACTION FAN E/BME: AS DOC F PROVIDE A MECHANICAL EXTRACTION FAN TO GF WC AREA TO RUN - NO LESS THAN 6L/SEC - USING A TOPPS S12 OR A NU AIR TYPE LOW VOLTAGE EXTRACTION FAN WITH ADJUSTABLE RUN-ON-TIME 2 TO OUT OF THE 'EXTERNAL WALL CW CAUTION WALL DUCT - SURE, MAGNETIC GRILLE AND LOW VIBE etc

• ESCAPE WINDOW: RECOMMEND PROVISION OF AN ESCAPE OPERER WINDOW TO NEW WET ROOM WINDOW AS B. REFS DOC B1 PARA 2.3(a) AS AN ESCAPE FROM EXL KITCHEN AREA - AS INCORPORATED INTO NEW WINDOW ON REAR MIN 450 W X 750 H ETC - MAX 1100 FLOOR TO SILL

• ROOFLINE: UPVC PROFILED CASINGS/SWIFTS & EAVES TO SUIT A NOMINAL SOFT PROJECTION, UPVC VERGE BOARDS AND END CAPS TO SUIT ROOFTILES WITH BOX UPVC GUTTERS AND DOWNSPOUTS FOR SW COLLECTION - TO CREATE A MAINTENANCE FREE ROOFLINE INSTALLATION.



1:50 PROPOSED - "REAR" - ELEVATION.



PROPOSED "SIDE VIEW" - FROM N 32

• 225x75 AIR BRICK TO MAINTAIN A CROSS FLOW OF VENTILATION TO EXISTING AIR BRICKS TO ORIGINAL SUB-FLOOR VOID etc

05 MAR 2024

17791/24

D R G N^o: **6A**