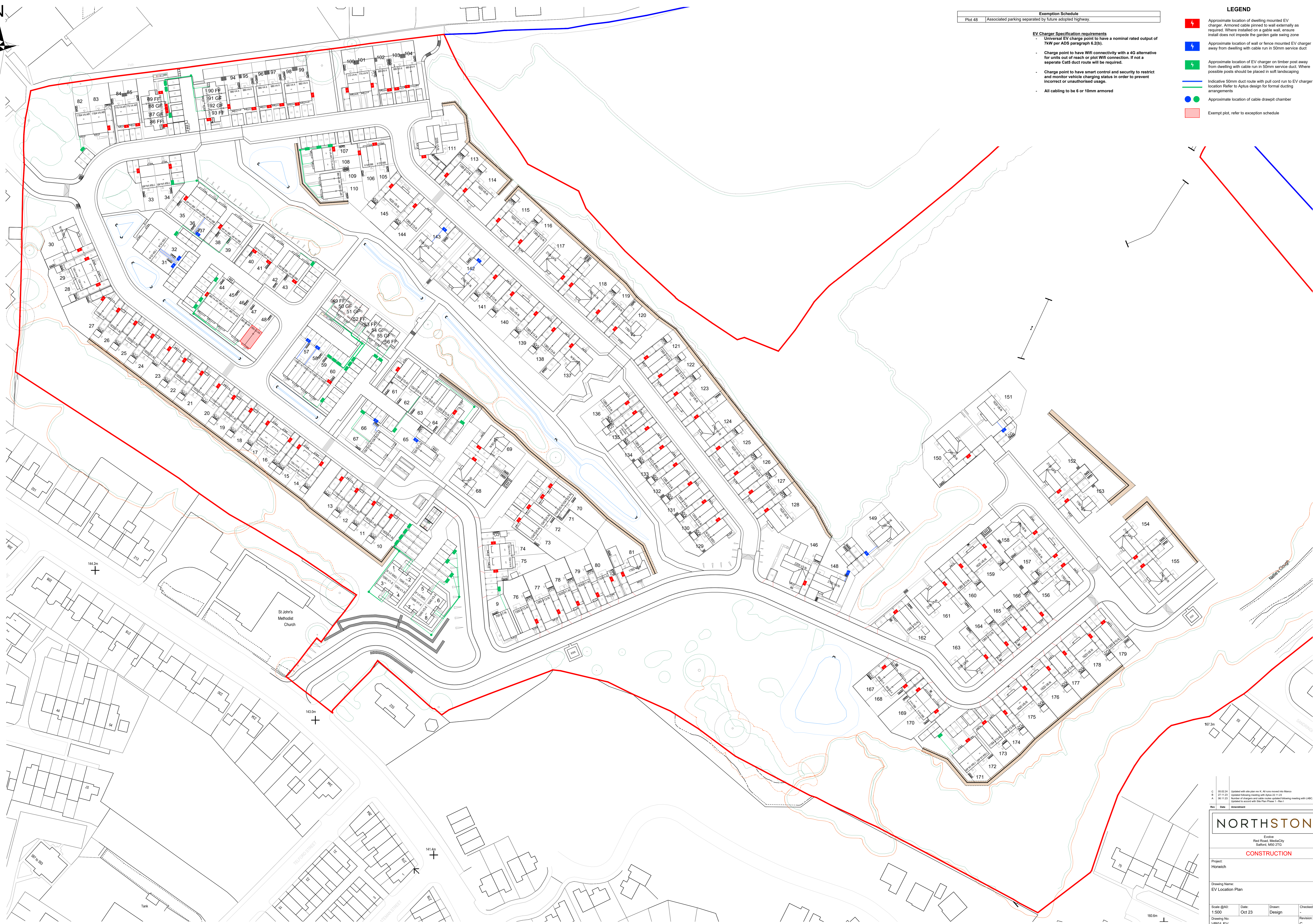


Exemption Schedule	
Pict 48	Associated parking separated by future adopted highway.

- EV Charger Specification requirements**
- Universal EV charge point to have a nominal rated output of 7kW per ADS paragraph 6.2(b).
 - Charge point to have Wifi connectivity with a 4G alternative if not a separate Cat5 duct route will be required.
 - Charge point to have smart control and security to restrict and monitor vehicle charging status in order to prevent incorrect or unauthorised usage.
 - All cabling to be 6 or 10mm armoured

- LEGEND**
- Approximate location of dwelling mounted EV charger. Armoured cable pinned to wall externally as required. Where installed on a gable wall, ensure install does not impede the garden gate swing zone.
 - Approximate location of wall or fence mounted EV charger away from dwelling with cable run in 50mm service duct.
 - Approximate location of EV charger on timber post away from dwelling with cable run in 50mm service duct. Where possible posts should be placed in soft landscaping.
 - Indicative 50mm duct route with pull cord run to EV charger location. Refer to Aptsus design for formal ducting arrangements.
 - Approximate location of cable drawpit chamber.
 - Exempt plot, refer to exemption schedule.



C	05/22/24	Updated with site plan m.v. All items moved into Memo	C.P.
B	27/11/23	Updated following meeting with Apsus 22/11/23	C.P.
A	08/11/23	Issued for design and cable routes updated following meeting with LABC	A.T.
Rev	Date	Amendment	Drawn

NORTHSTONE

Exeive
Red Road, MediaCity
Salford, M50 2TU

CONSTRUCTION

Project:
Horwich

Drawing Name:
EV Location Plan

Scale @A0:	Date:	Drawn:	Checked:
1:500	Oct 23	Design	-
Drawing No:	VR01-EV	Drawn:	Checked:
			C

Notes: All specifications, materials and workmanship to be in accordance with current NHBC and Building Regulations. Main drainage to comply with Sewers for Adoption current edition. Highways to be in accordance with Local Authority specification. Do not scale from this drawing. All dimensions to be verified with the drawing office. Print in Colour.