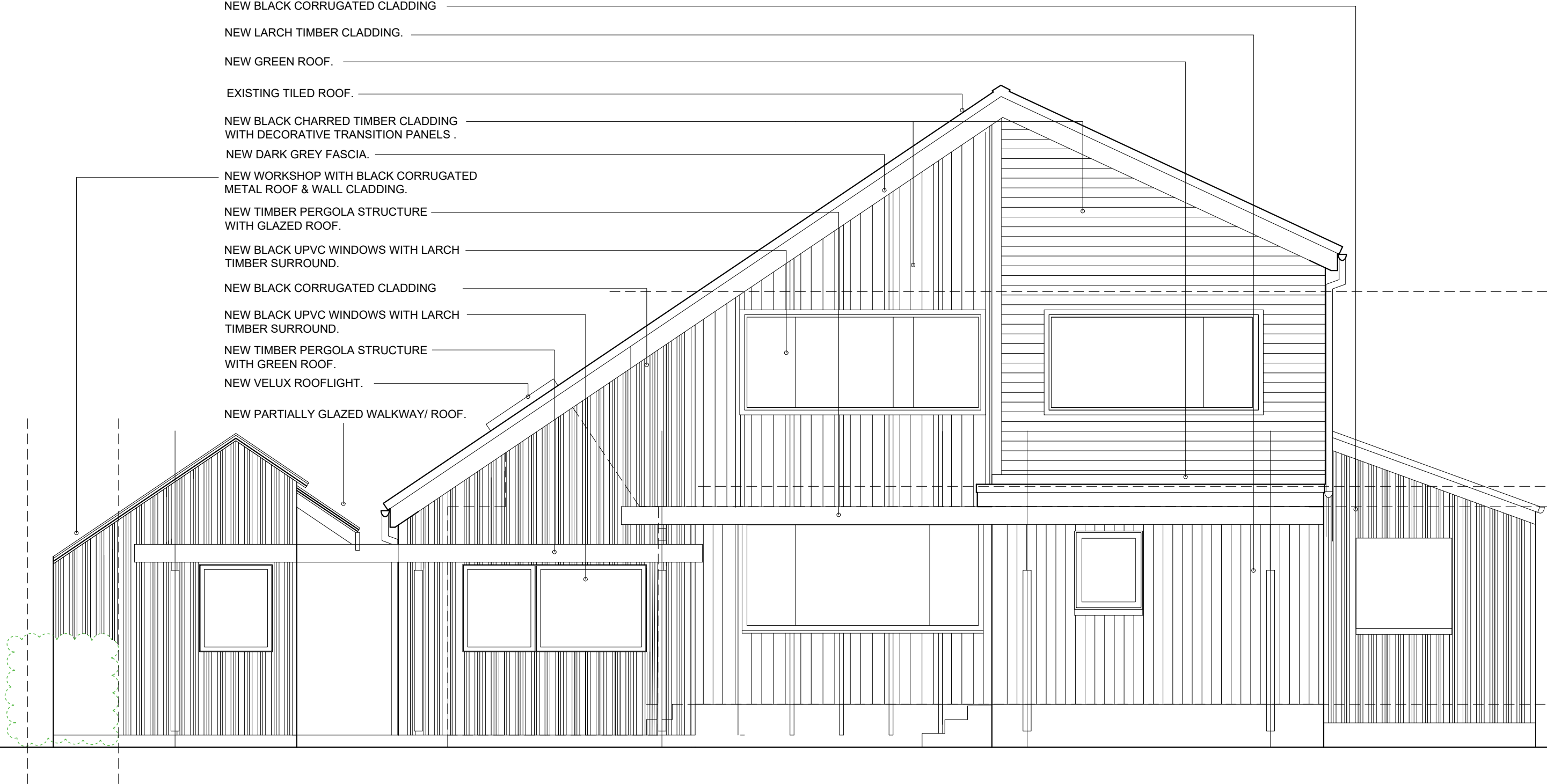


- NEW BLACK CORRUGATED CLADDING
- NEW LARCH TIMBER CLADDING.
- NEW GREEN ROOF.
- EXISTING TILED ROOF.
- NEW BLACK CHARRED TIMBER CLADDING WITH DECORATIVE TRANSITION PANELS .
- NEW DARK GREY FASCIA.
- NEW WORKSHOP WITH BLACK CORRUGATED METAL ROOF & WALL CLADDING.
- NEW TIMBER PERGOLA STRUCTURE WITH GLAZED ROOF.
- NEW BLACK UPVC WINDOWS WITH LARCH TIMBER SURROUND.
- NEW BLACK CORRUGATED CLADDING
- NEW BLACK UPVC WINDOWS WITH LARCH TIMBER SURROUND.
- NEW TIMBER PERGOLA STRUCTURE WITH GREEN ROOF.
- NEW VELUX ROOFLIGHT.
- NEW PARTIALLY GLAZED WALKWAY/ ROOF.



0 5m

proposed alterations at
6 Bellard Road
West Kilbride
for Jeni Lennox

PROPOSED front elevation 1/50 @A3

6BR /P12

[IDa]
Design & Architecture

07779 024903 brian_ida@outlook.com
07977 094990 amy_ida@outlook.com