

RE: 52 Broadoaks Way, BR2 0UB

"Removal of existing flue and installation of external wall insulation to rear elevation (Lawful Development Certificate Proposed)"

(From A J S Herbert - ^{01/03/24}~~28/07/24~~)

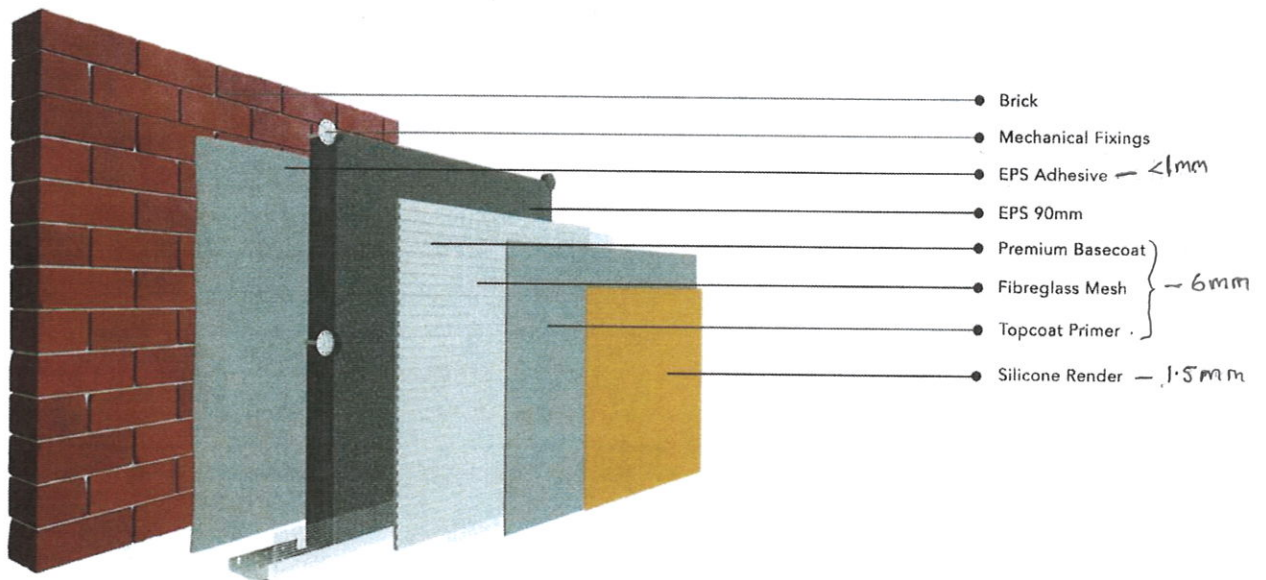
Case Study: EPS onto Brick

Summary

- Substrate: Brick
- U-Value change: 2.0 W/m²K-0.3 W/m²K
- Top coat: EWI-075 Silicone Render – 1.5mm
- Basecoat: EWI-225 Premium Basecoat
- Colour: Ash – 27412
- Location: Nottinghamshire
- Installer: WP External Insulated Rendering



Expanded polystyrene (EPS) is a high-performing thermal insulation material often used in our external wall insulation systems. It upgrades the thermal properties of a building, improving its U-Values and reducing the risk of water penetration and condensation. It is designed to be applied externally to masonry walls using adhesive and mechanical fixings.



EPS is a popular external wall insulation material given that it is light, affordable and easy to work with. When formed, it traps air in bubbles within each bead, preventing heat from transferring from one side to the other. The high-purity graphite particles in our EPS radiate heat which, compared to standard white EPS, significantly improves insulation capability.