

PRP



# CAPEL MANOR COLLEGE, MOTTINGHAM CAMPUS

Planning Derogation  
January 2024

prp-co.uk  
Architecture  
Urban Design  
Masterplanning  
Landscape  
Development Consultancy  
Research



Client  
Capel Manor College  
Mottingham Lane  
Mottingham  
London SE12 9AW



Architect  
3BM Studio  
Unit LM07 G01  
The Leather Market  
Weston Street  
London SE1 3BR



Landscape Architect  
PRP  
10 Lindsey Street  
Smithfield  
London EC1A 9HP

**PRP Job Reference / Document Number**

BL10856 Capel Manor College

**Issuing Date / Office**

17.01.2024 /London

**Revision Number / Date Checked**

00 / 17.01.2024

**Project Lead**

Angeli Ganoo-Fletcher

**Landscape Architect**

Patricia Brehmer

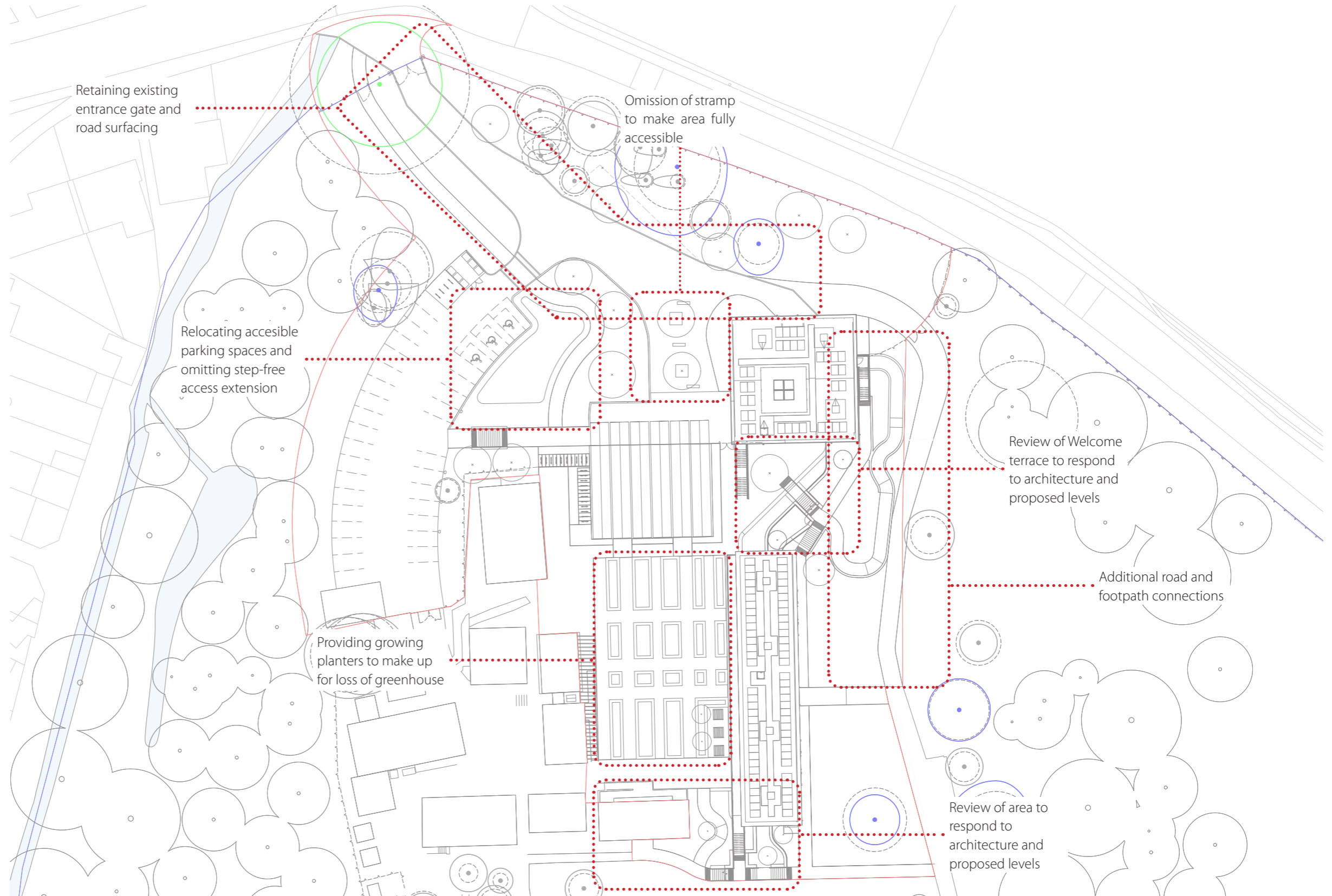
# CONTENT

OVERVIEW.....	4
CAMPUS ENTRANCE.....	5
ARRIVAL GARDEN AND PARKING COURT.....	6
ENTRANCE SQUARE.....	7
WELCOME TERRACE.....	8
CENTRAL COURTYARD.....	9
SOUTH OF THE TEACHING BLOCK.....	10

## OVERVIEW

The document provides a comprehensive synopsis of the changes from the planning approved plan CMC-MOT-L101\_R2 to the current amended plan CMC-PRP-ZZ-00-DR-L-2500\_REVB

PRP has reviewed the landscape design for Capel Manor College, Mottingham Campus to further detail the landscape adjacent to the proposed buildings, improve accessibility where possible, and, more importantly, to provide more areas of softscape and opportunities for growing to echo the college's horticultural legacy.





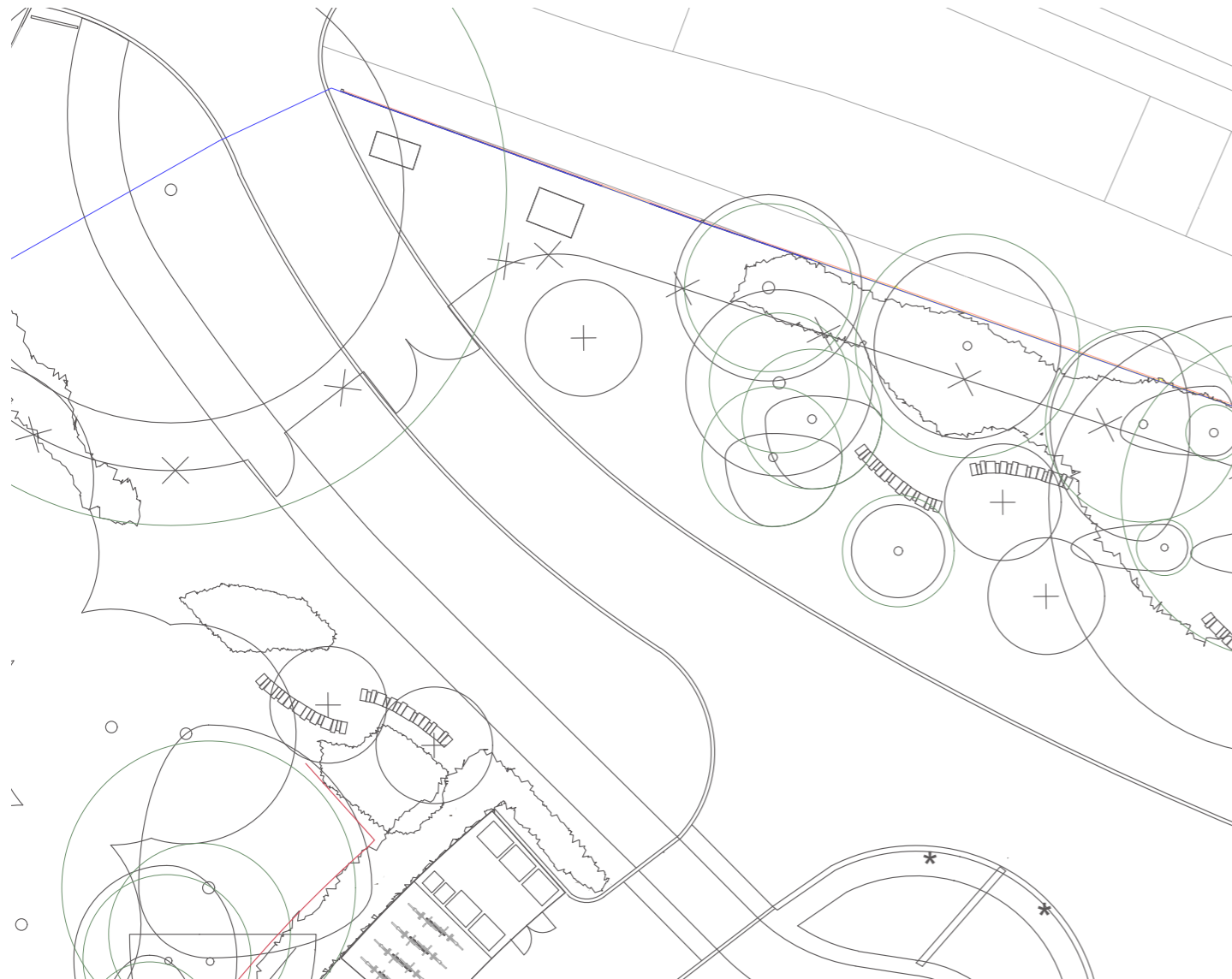
## CAMPUS ENTRANCE

The main changes to the entrance area are the retention of the existing gate and road surfacing, and the omission of proposed trees north of the bin store.

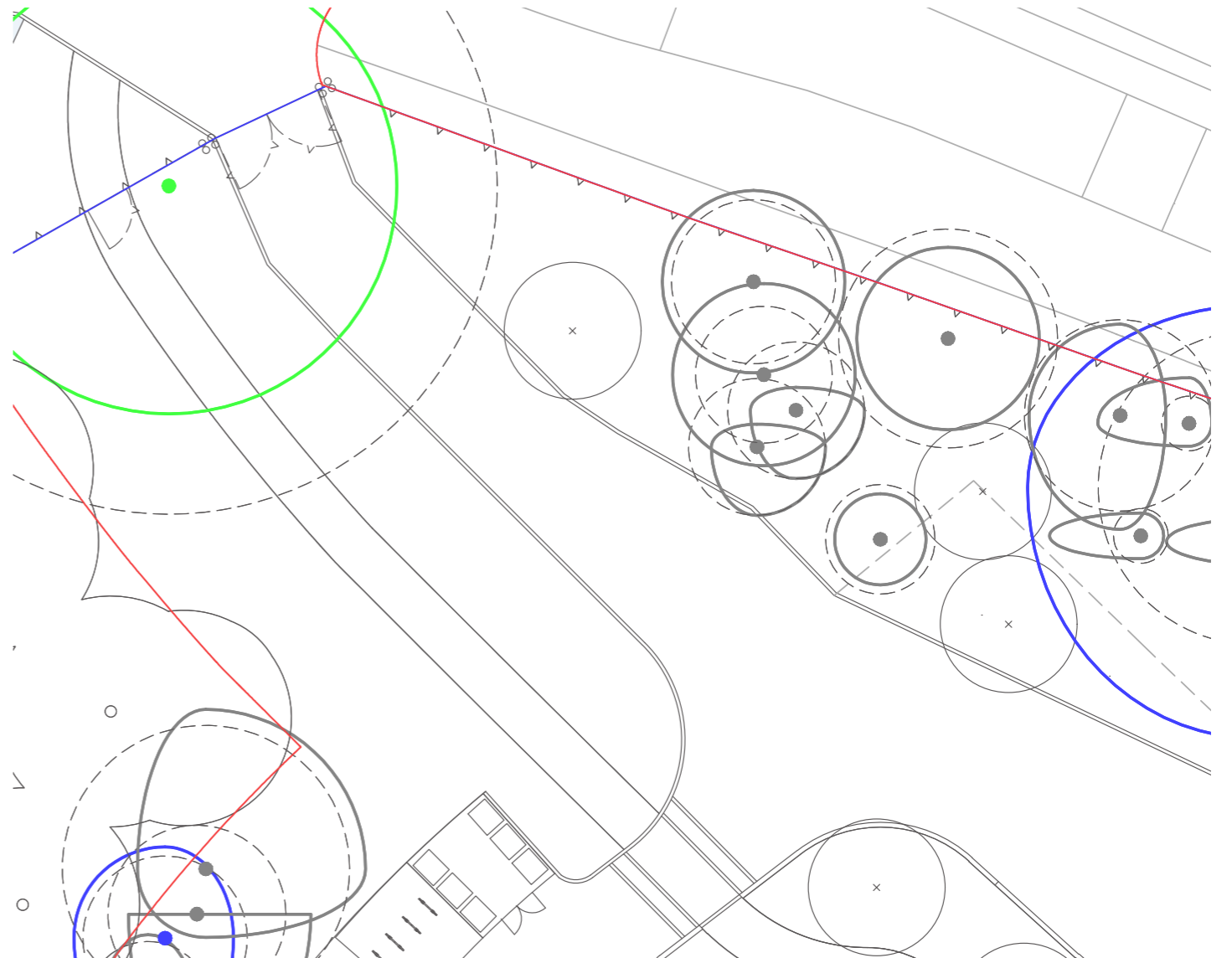
Repainting the gate, with the opportunity for a mural, and making good the hardstanding rather than replacing both, reduces the waste produced on site, and lower the carbon footprint of the overall proposal.

The proposed trees have been removed due to the areas adjacent to the trees as well as opportunities for growth.

### CMC-MOT-L101\_R2



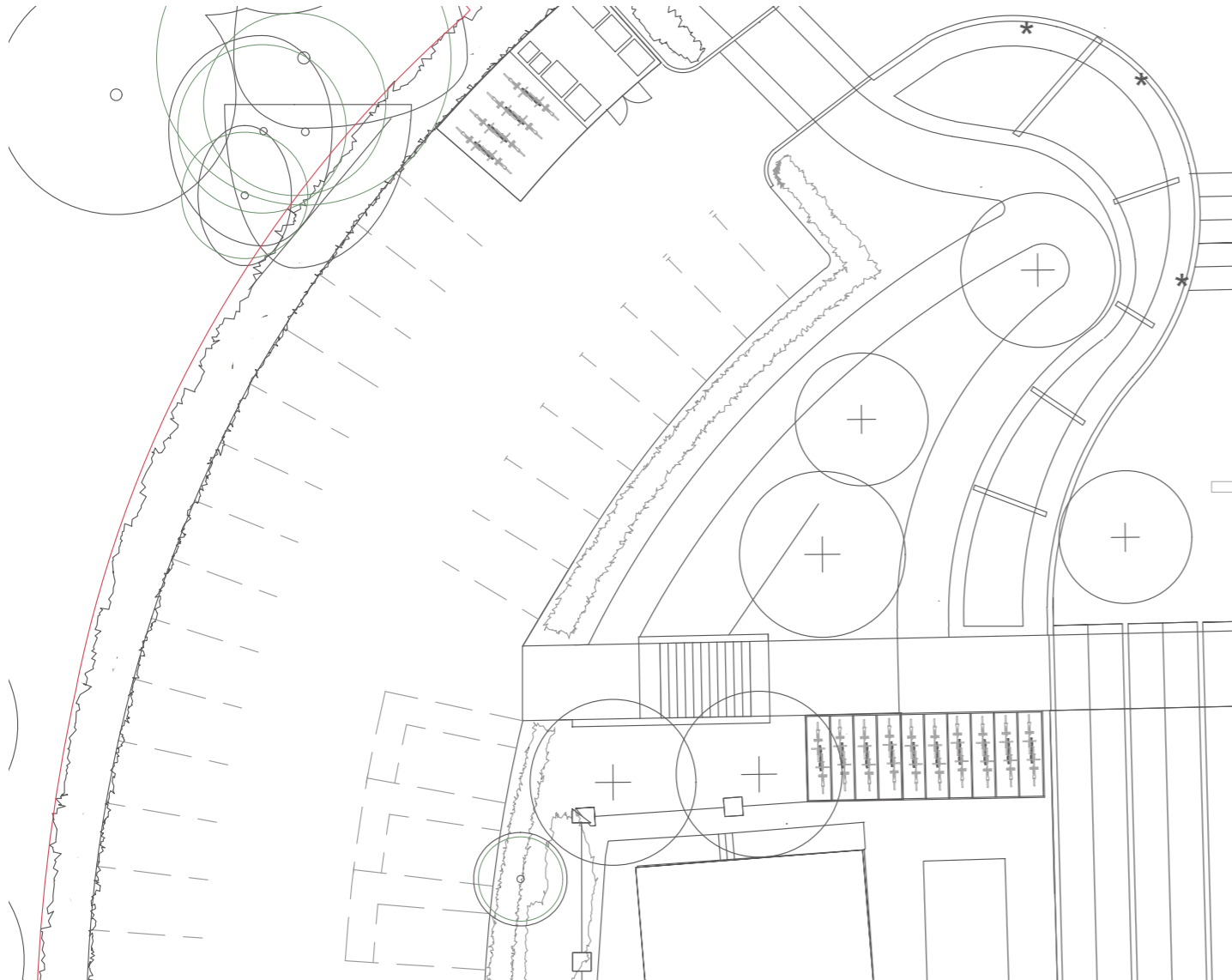
### CMC-PRP-ZZ-00-DR-L-2500\_REVB



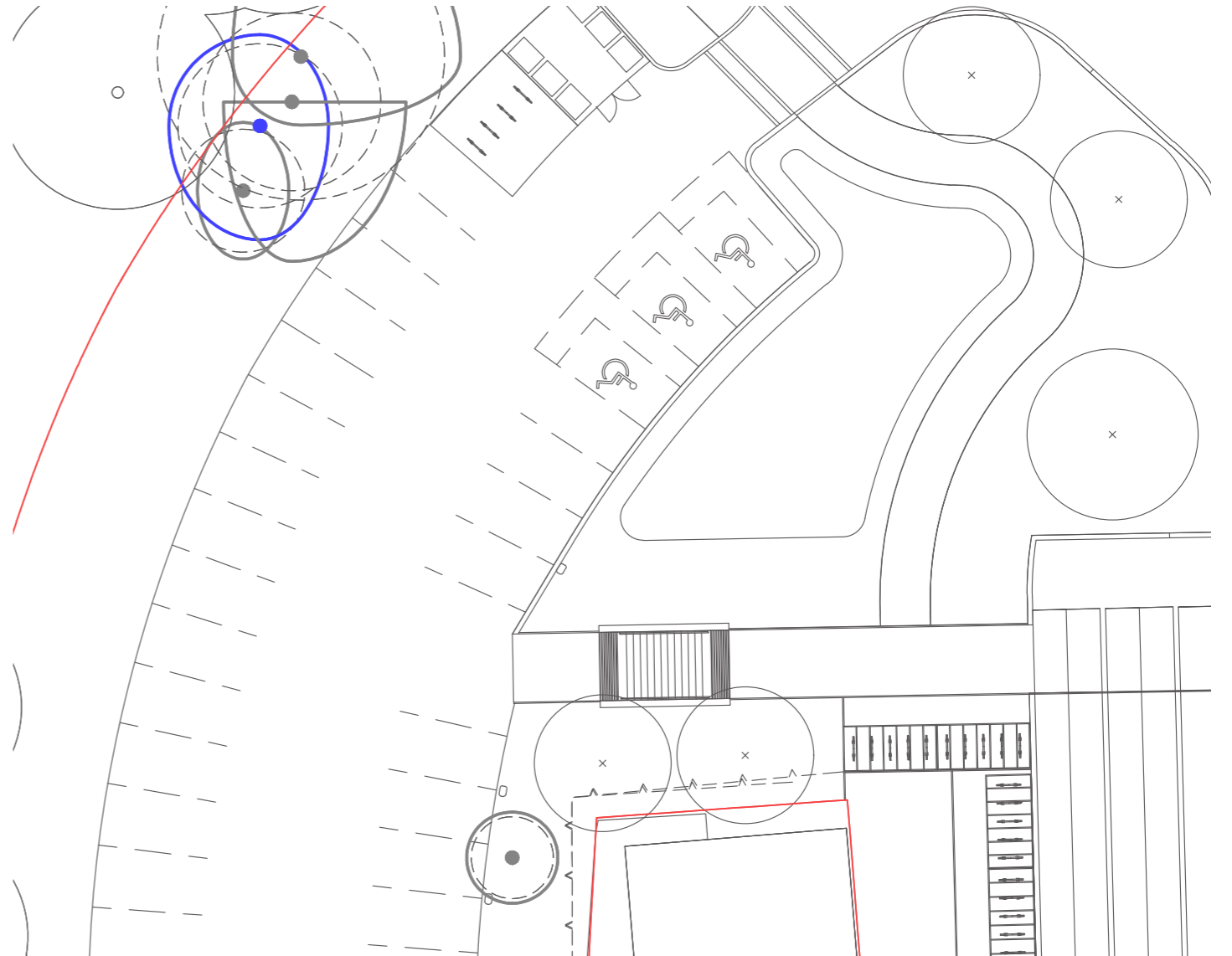
## ARRIVAL GARDEN AND PARKING COURT

To improve accessibility, the accessible parking bays have been moved closer to the entrance of the parking court. This reduced the travel distance to both the Entrance Square and Welcome Block.

CMC-MOT-L101\_R2



CMC-PRP-ZZ-00-DR-L-2500\_REVB

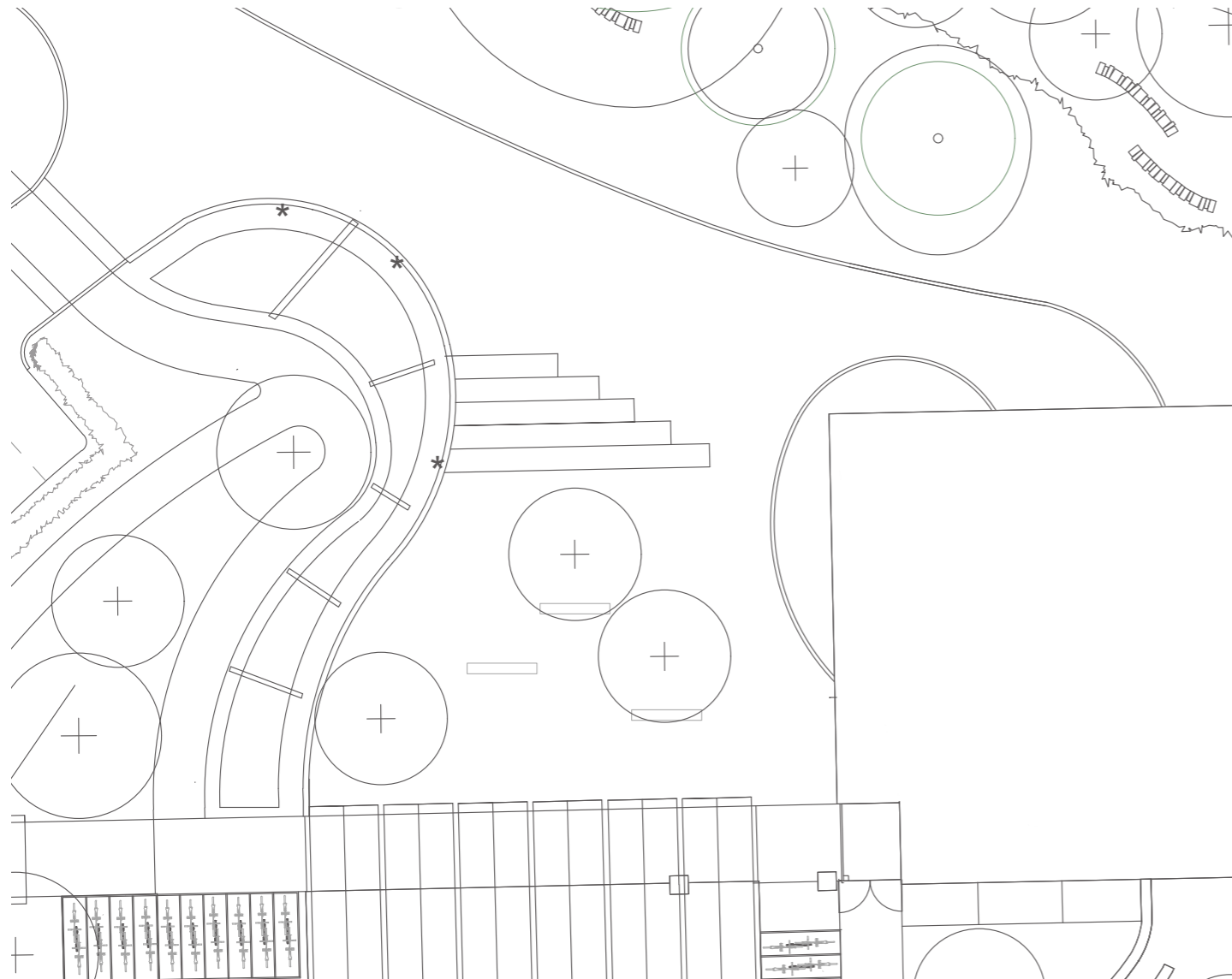


## ENTRANCE SQUARE

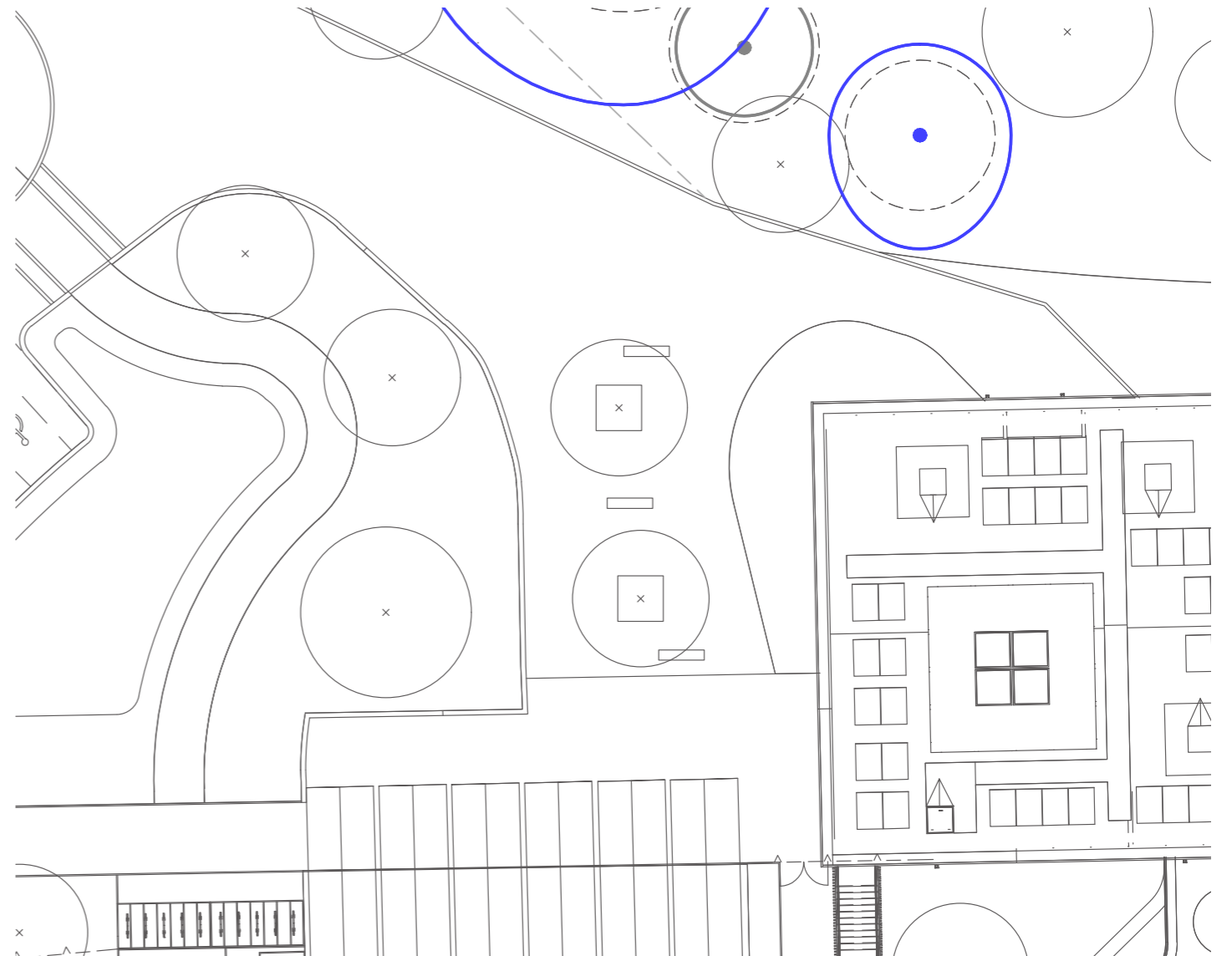
In line with the accessibility improvements of the Arrival Garden, the stramp has been omitted to make the Welcome Terrace fully accessible.

Furthermore, to follow the guiding design principles set out in the DAS, the existing planter wall has been retained and the planting extended to help lower the carbon footprint and provide additional ecological and biodiverse planting communities.

CMC-MOT-L101\_R2



CMC-PRP-ZZ-00-DR-L-2500\_REVB



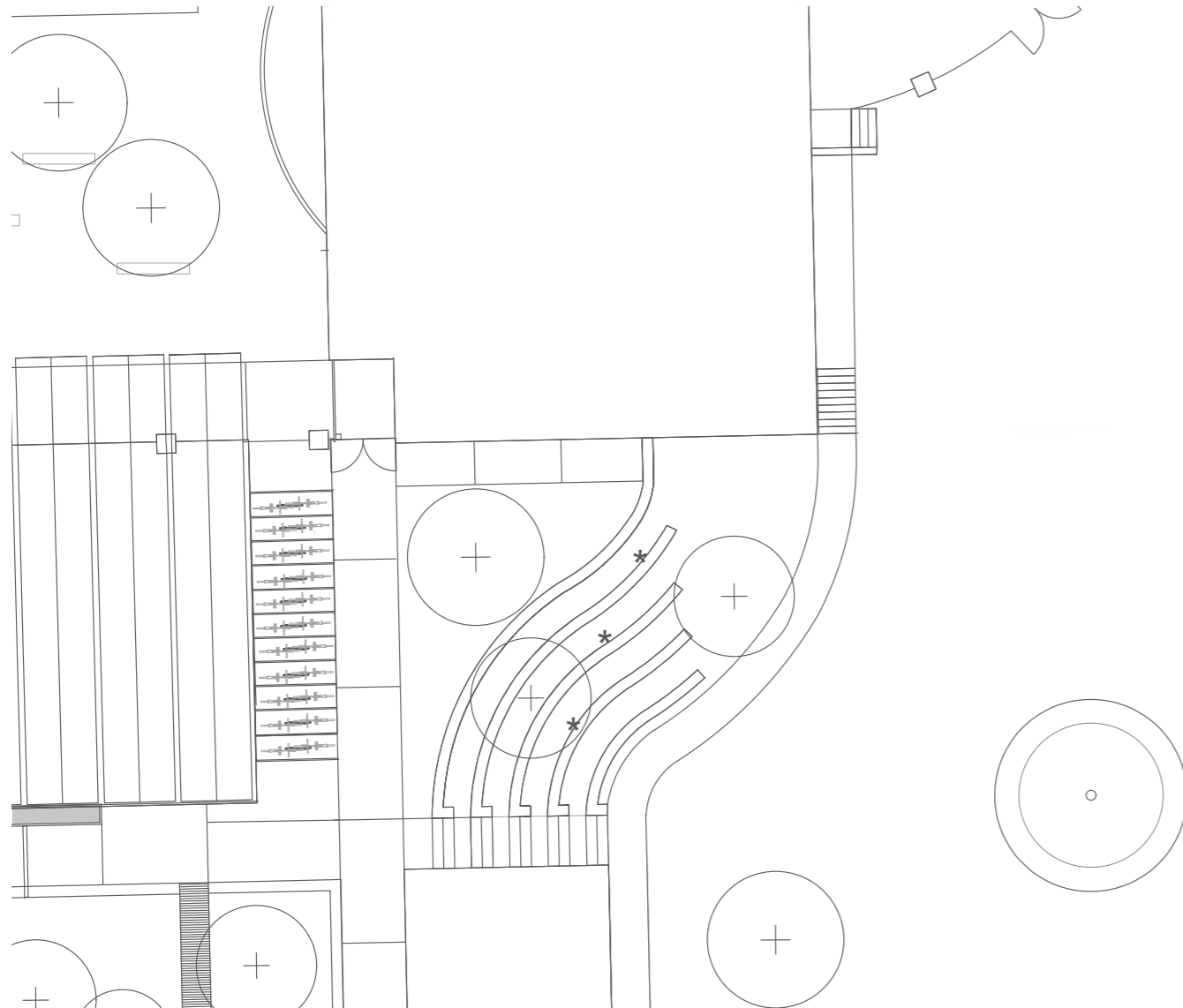
## WELCOME TERRACE

The Welcome Terrace has been reviewed to respond to the further development of the architecture, and to detail the proposed levels for the landscape design.

The 11 no. cycle stands have been moved to the opposite side of the greenhouse due to the proposed staircase leading from the Welcome Block to the Welcome Terrace.

A step-free access route has been proposed leading from the ground level to the top of the terraces to fully improve accessibility for the site and make the overall area more permeable

CMC-MOT-L101\_R2



CMC-PRP-ZZ-00-DR-L-2500\_REVB



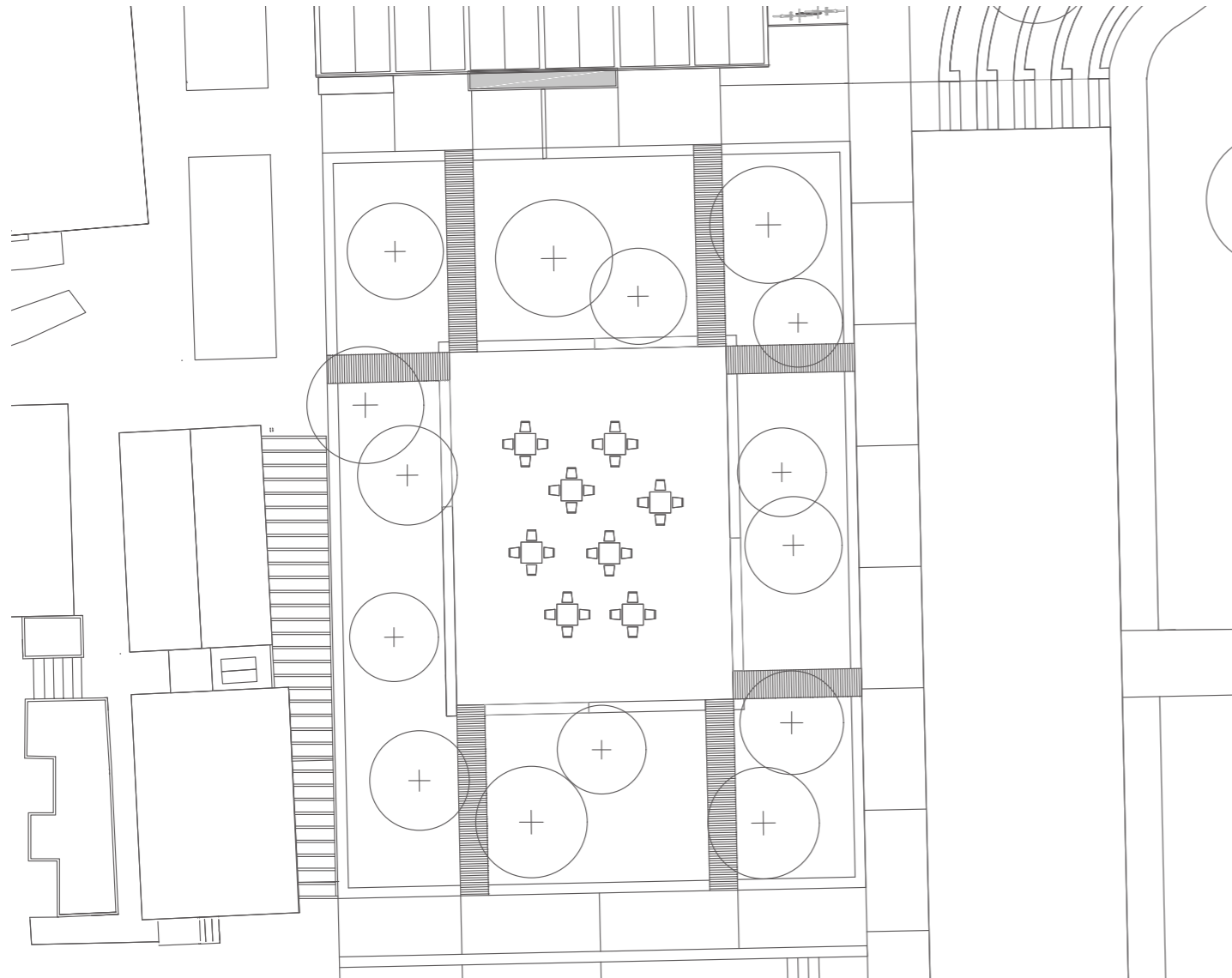


## CENTRAL COURTYARD

The proposed planting and seating in the Central Courtyard has been omitted in place of growing beds.

Given the removal of one greenhouse, PRP is proposing growing beds in its place. This will retain the green openness of the previous proposal, while also minimising the loss of opportunities for plant growing, and enable the students to engage in planting sessions.

CMC-MOT-L101\_R2



CMC-PRP-ZZ-00-DR-L-2500\_REVB

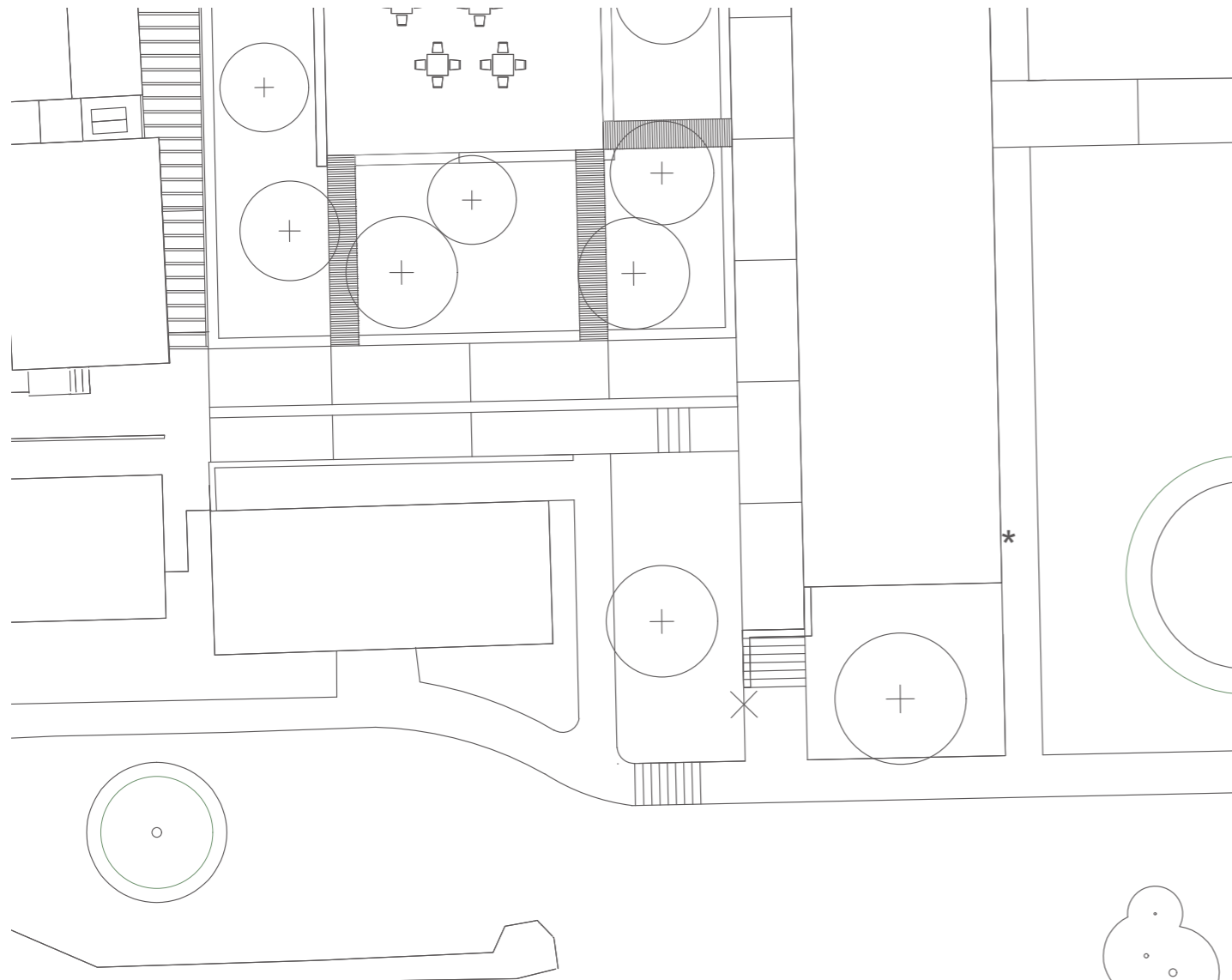


## SOUTH OF THE TEACHING BLOCK

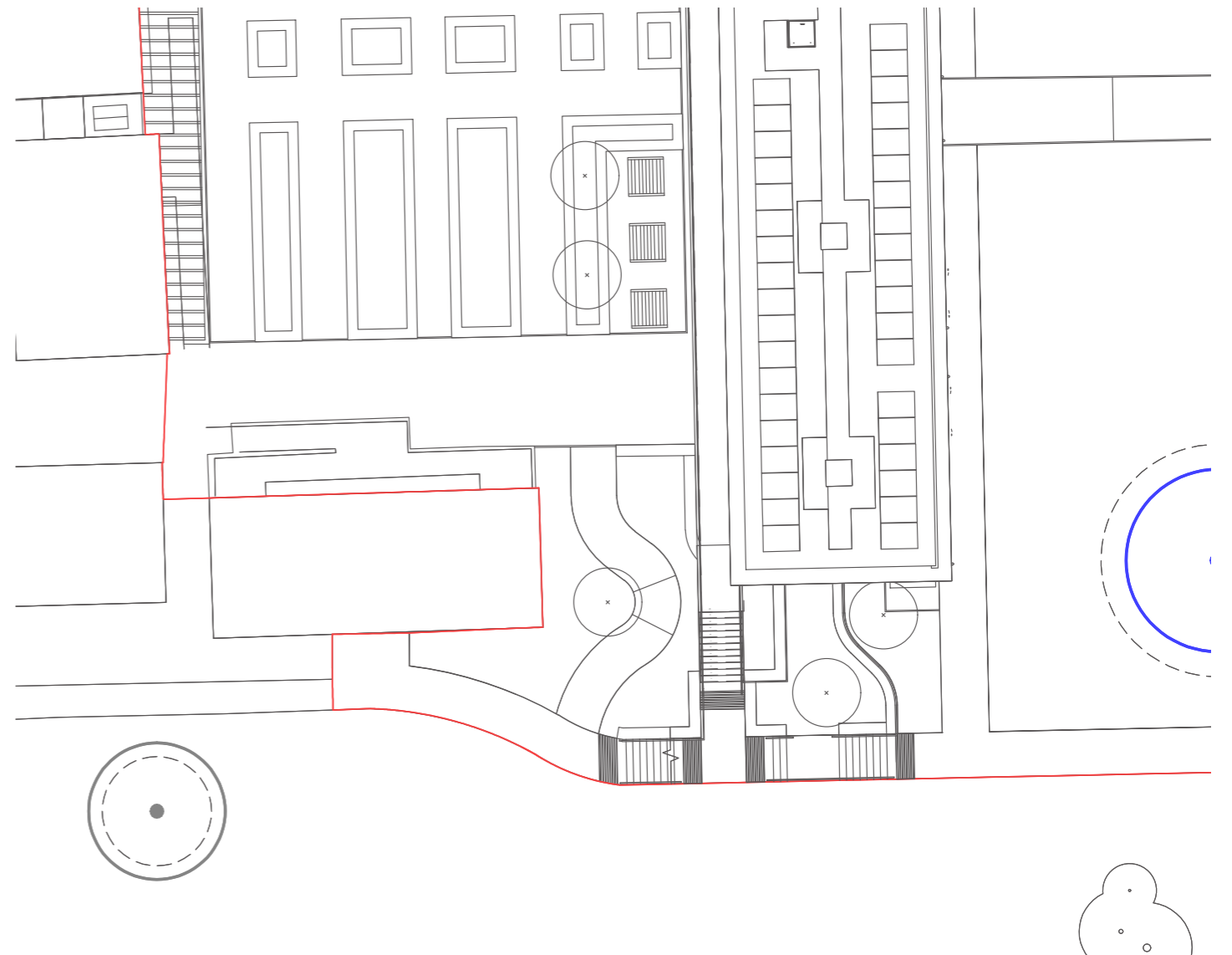
The area south of the Teaching Block has been reviewed to respond to the further development of the architecture, and to detail the proposed levels for the landscape design.

The path between the existing classrooms M6/M7 and the Teaching Block has also been reviewed to provide a more direct, step-free access to the south of classrooms M6/M7.

CMC-MOT-L101\_R2



CMC-PRP-ZZ-00-DR-L-2500\_REVB



# PRP

[prp-co.uk](http://prp-co.uk)

Architecture  
Urban Design  
Masterplanning  
Landscape  
Development Consultancy  
Research

