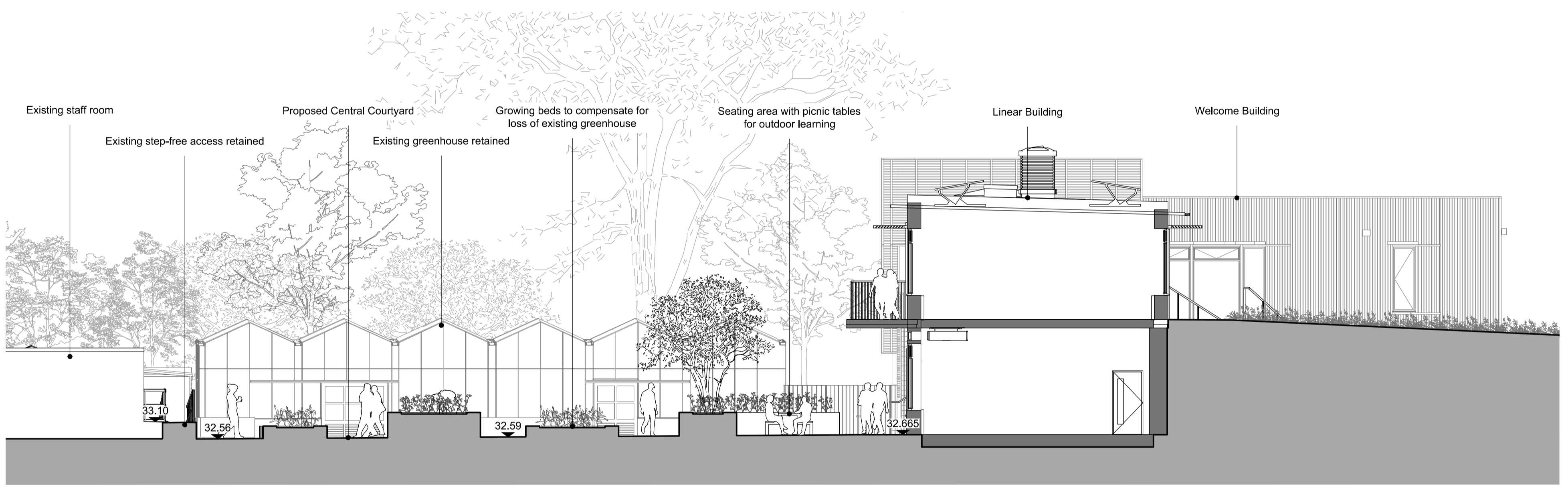
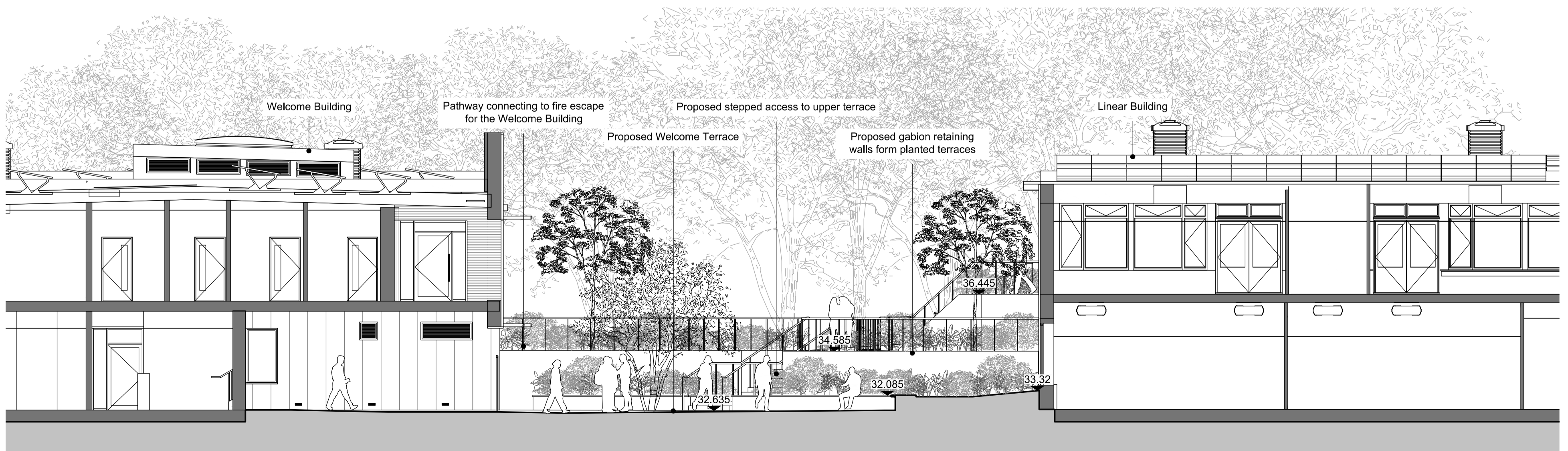


C-C' Proposed Section C-C'  
1:100@A1



D-D' Proposed Section D-D'  
1:100@A1



E-E' Proposed Section E-E'  
1:100@A1

The contractor is responsible for checking dimensions, tolerances and references. Any discrepancy to be verified with the Architect before proceeding with the works. Where an item is covered by drawings to different scales the larger scale drawing is to be worked to.

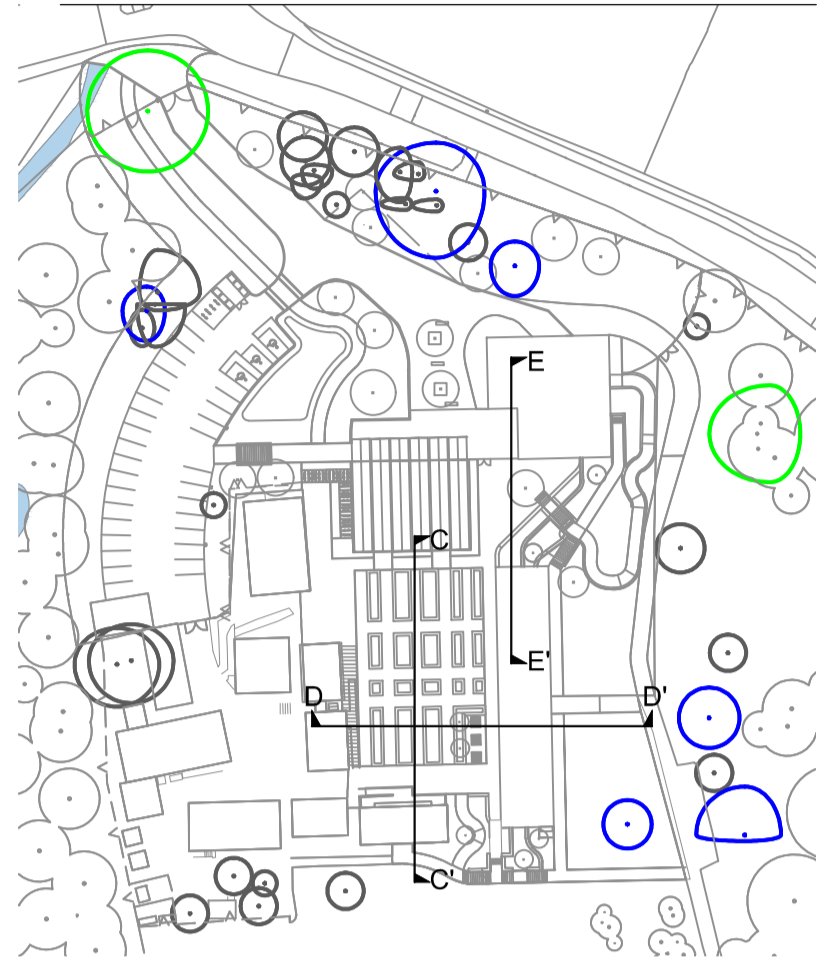
Do not scale drawing. Figured dimensions to be worked to in all cases.

Where products have been specified, PRP have reviewed applicable products available in the UK at the time of writing the specification. For the avoidance of doubt, product manufacturers and suppliers must confirm that each product is fit for its intended use and provide such evidence as may reasonably be requested to confirm performance, including, but not limited to, product test classification and interfaces with adjacent products.

Where the contractor wishes to propose alternative products, representative samples and a full technical appraisal should be submitted by the contractor to the employer demonstrating that their proposed alternative has equal or better performance. Any alternative products are subject to design team, building control, warranty provider and employer acceptance.

CDM REGULATIONS 2015. All current drawings and specifications for the project must be read in conjunction with the Designer's Hazard and Environment Assessment Record

All intellectual property rights reserved.



Rev	Date	Description	PB	AGF	Dwn	Ckd
	15.02.2024	Planning condition submission				

**Capel Manor College Mottingham**  
Proposed Landscape Sections 2 of 2

**CMC-PRP-ZZ-ZZ-DR-L-2506 REV**  
SUITABLE FOR COORDINATION

Drawn PB Checked AGF Date 15.02.2024 Scale @ A1 1:100